

4

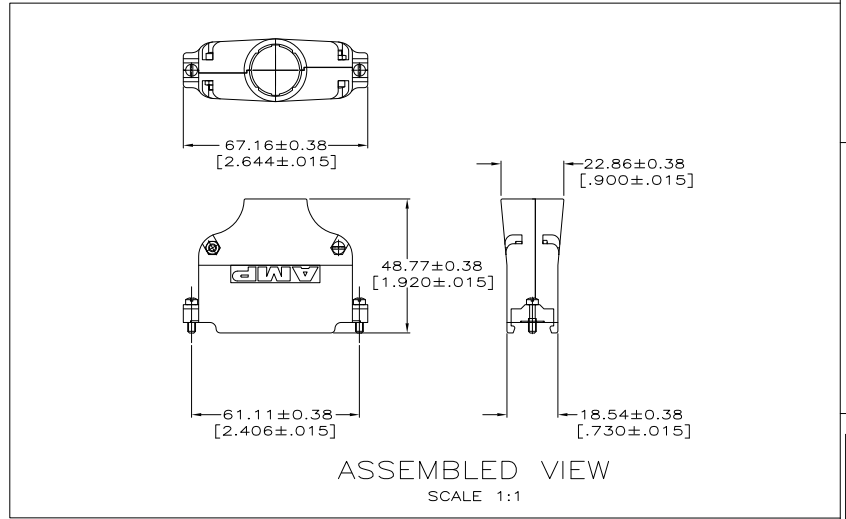
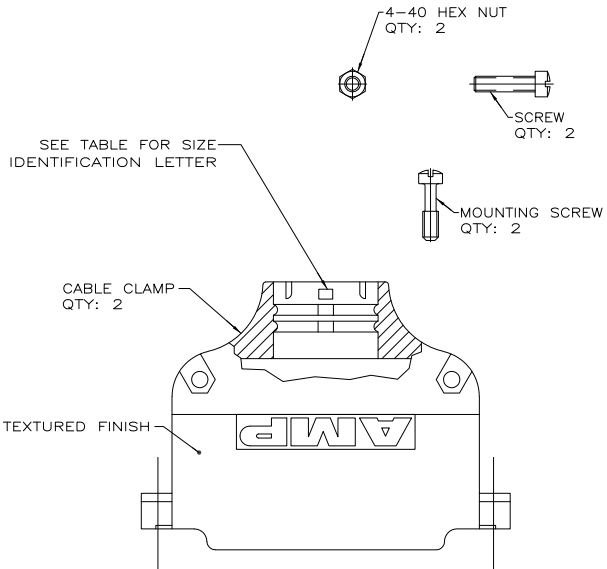
3

2

1

THIS DRAWING IS UNPUBLISHED. RELEASED FOR PUBLICATION. ALL RIGHTS RESERVED.

LOC	DST	REVISIONS		
		P	LTR	DESCRIPTION
GP	00	P		
		P		REVISED PER ECO-11-004835
				DATE
				11MAR11
				BY
				RK
				APP'D
				HMR



⚠ SCREW: CARBON STEEL.
MOUNTING SCREW & HEX NUT: CARBON STEEL.
CABLE CLAMP: ZINC.

⚠ SCREWS, MOUNTING SCREWS & HEX NUTS: ZINC PLATE 5.08 μm – 10.16 μm [.000200–.000400] THICK, CLEAR CHROMATE COATING.
CABLE CLAMP: 5.08 μm [.000200] MIN NICKEL OVER 5.08 μm [.000200] MIN COPPER.

**COPYRIGHT 2005
TE CONNECTIVITY CORP
ALL RIGHTS RESERVED**

I	9.53	[.375]	5745175-6
L	11.43	[.450]	5745175-5
O	13.34	[.525]	5745175-4
S	15.24	[.600]	5745175-3
U	17.15	[.675]	5745175-2
V	19.05	[.750]	5745175-1
NECK SIZE I.D.		CABLE DIA	PART NO.

DIMENSIONS:		TE CONNECTIVITY	
MM(INCHES)		TE Connectivity	
0 PL	2	MIN. D. HENNY	8-13-05
1 PL	2	OK. ROLIDE	8-13-05
2 PL	2	C. DRY	
3 PL	2	APPRO. M. WALMSLEY	8-13-05
4 PL	2	PRODUCT SPEC	
MATERIAL		APPLICATION SPEC	
FINISH		WEIGHT	
		CUSTOMER DRAWING	
		SIZE	CAGE CODE
		A2	00779
		SCALE	2:1
		SHEET	1 of 1
		REV	P

1471-9 (3/11)

5745175

A