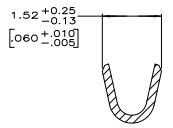
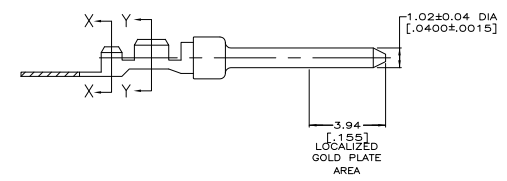
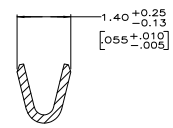


COLOR CODED BLUE, ON FAR SIDE INDICATES 24-28 AWG WIRE RANGE LOOSE PIECE ONLY



SECTION X-X  
INSULATION BARREL  
SCALE 20:1



SECTION Y-Y  
WIRE BARREL  
SCALE 20:1

- ▲ FOR MINI-APPLICATOR AND STRIPPER CRIMPER.
- ▲ FOR HAND TOOL USE ONLY.
- ▲ FOR STANDARD APPLICATOR PART #566184 ONLY.
- 4. WIRE RANGE OF 24-28. INSULATION RANGE OF .030-.040.
- 5. GOLD PLATING MAY NOT APPEAR ON CARRIER STRIP.
- ▲ GOLD PLATING PER MIL-G-45204, NICKEL PLATING PER QQ-N-290.
- ▲ TIN PLATING PER MIL-T-10727, COPPER PLATING PER MIL-C-14550.
- ▲ PLATED, 1.27μm [.000050] GOLD OVER 1.27μm [.000050] NICKEL.
- ▲ GOLD PLATED IN LOCALIZED GOLD PLATED AREA, 0.76μm [.000030] GOLD IN MATED AREA.
- ▲ GOLD FLASH ON REMAINDER, OVER 1.27μm [.000050] NICKEL.
- ▲ PLATED WITH GOLD FLASH OVER 0.76μm [.000030] NICKEL.
- ▲ PLATED WITH 2.54μm-5.08μm [.00100-.00200] TIN.
- ▲ PLATED WITH 1.27μm [.000050] GOLD IN LOCALIZED GOLD PLATE AREA.
- ▲ GOLD FLASH ON REMAINDER, OVER 1.27μm [.000050] NICKEL.
- ▲ GOLD PLATED IN LOCALIZED GOLD PLATED AREA, 0.76μm [.000030] GOLD IN MATED AREA.
- ▲ TIN PLATED WIRE BARRELS, OVER 1.27μm [.000050] NICKEL.
- ▲ GOLD FLASH ON REMAINDER, OVER 1.27μm [.000050] NICKEL.
- ▲ TIN PLATED WIRE BARRELS, OVER 0.76μm [.000030] NICKEL.
- ▲ GOLD PLATED IN LOCALIZED GOLD PLATED AREA, 0.38μm [.000015] GOLD IN MATED AREA.
- ▲ GOLD FLASH ON REMAINDER, OVER 1.27μm [.000050] NICKEL.
- ▲ AMP ITALY PART NUMBER ONLY.
- ▲ GOLD PLATED IN LOCALIZED GOLD PLATED AREA, 0.03μm [.000001] GOLD IN MATED AREA.
- ▲ 0.76μm [.000030] MIN TIN OR TIN-LEAD ON WIRE BARRELS, ALL OVER
- ▲ 0.76μm [.000030] MIN NICKEL.

OBSOLETE	STANDARD	▲	▲	STRIP	6-66507-3
OBSOLETE	STANDARD	▲	▲	STRIP	6-66507-2
OBSOLETE	STANDARD	▲	▲	LOOSE PIECE	5-66507-9
	STANDARD	▲	▲	LOOSE PIECE	5-66507-7
OBSOLETE	STANDARD	▲	▲	STRIP	3-66507-1
	STANDARD	▲	▲	STRIP	3-66507-0
	STANDARD	▲	▲	STRIP	2-66507-8
	STANDARD	▲	▲	STRIP	2-66507-7
OBSOLETE	STANDARD	▲	▲	STRIP	1-66507-4
	STANDARD	▲	▲	LOOSE PIECE	1-66507-0
	STANDARD	▲	▲	LOOSE PIECE	66507-9
SUPERSEDED BY 66507-9	STANDARD	▲	▲	LOOSE PIECE	66507-8
	STANDARD	▲	▲	STRIP	66507-4
	STANDARD	▲	▲	STRIP	66507-3
	STANDARD	▲	▲	STRIP	66507-2

PACKAGING TYPE FINISH USE		TYPE		PART NUMBER	
THIS DRAWING IS A CONTROLLED DOCUMENT	BY WELDON	DATE 9-2-08	BY RICHARD	DATE 9-2-08	REVISED
TITUS ELECTRONICS CORPORATION HARRISBURG, PA 17105-3608		PIN CONTACT, SIZE 20 DF, 24-28 AWG, AMPLIMATE			
INCHES	MILLIMETERS	114-10000	SIZE	DATE	ISSUE NO
1/16	1.588		A1	00779	G=66507
1/8	3.175				
3/16	4.763				
1/4	6.350				
5/16	7.938				
3/8	9.525				
1/2	12.700				
5/8	15.875				
3/4	19.050				
7/8	22.225				
1	25.400				
1 1/8	31.750				
1 1/4	38.100				
1 3/8	44.450				
1 1/2	50.800				
1 5/8	57.150				
1 3/4	63.500				
1 7/8	69.850				
2	76.200				
2 1/8	82.550				
2 1/4	88.900				
2 3/8	95.250				
2 1/2	101.600				
2 5/8	107.950				
2 3/4	114.300				
2 7/8	120.650				
3	127.000				
3 1/8	133.350				
3 1/4	139.700				
3 3/8	146.050				
3 1/2	152.400				
3 5/8	158.750				
3 3/4	165.100				
3 7/8	171.450				
4	177.800				
4 1/8	184.150				
4 1/4	190.500				
4 3/8	196.850				
4 1/2	203.200				
4 5/8	209.550				
4 3/4	215.900				
4 7/8	222.250				
5	228.600				
5 1/8	234.950				
5 1/4	241.300				
5 3/8	247.650				
5 1/2	254.000				
5 5/8	260.350				
5 3/4	266.700				
5 7/8	273.050				
6	279.400				
6 1/8	285.750				
6 1/4	292.100				
6 3/8	298.450				
6 1/2	304.800				
6 5/8	311.150				
6 3/4	317.500				
6 7/8	323.850				
7	330.200				
7 1/8	336.550				
7 1/4	342.900				
7 3/8	349.250				
7 1/2	355.600				
7 5/8	361.950				
7 3/4	368.300				
7 7/8	374.650				
8	381.000				
8 1/8	387.350				
8 1/4	393.700				
8 3/8	400.050				
8 1/2	406.400				
8 5/8	412.750				
8 3/4	419.100				
8 7/8	425.450				
9	431.800				
9 1/8	438.150				
9 1/4	444.500				
9 3/8	450.850				
9 1/2	457.200				
9 5/8	463.550				
9 3/4	469.900				
9 7/8	476.250				
10	482.600				