

### C-59U

#### Description:

Smoothing chokes are power supply filter chokes having a core with an air gap which prevents saturation at maximum current. Hipot to 1500 VRMS between winding and core for safety.

#### Electrical Specifications (@25C):

Current DC Amps	Inductance †† Henries	Resistance Ohms
12.5	0.010	0.10

†† = Inductance tolerance -20%, + 50 %

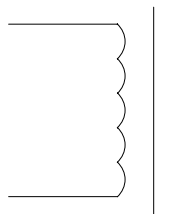
#### Dimensions:

Unit: In inches

A	B	C	D	E
3.50	4.125	3.00	3.437	2.375

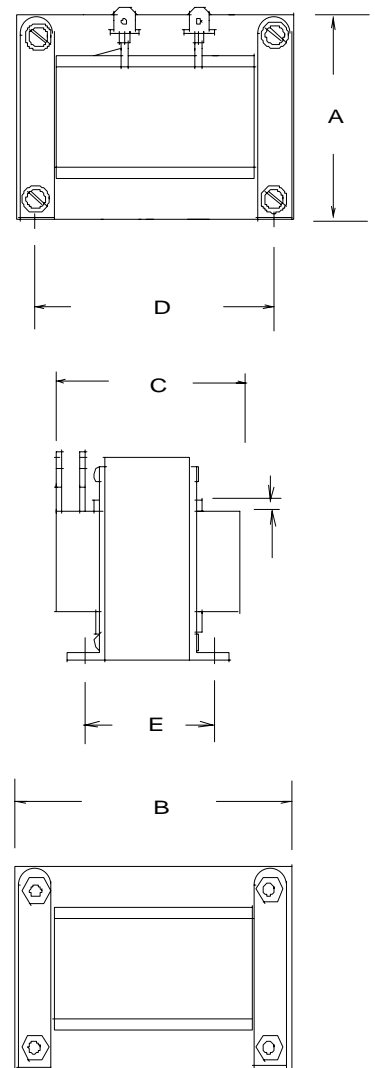
Weight: 6.25 lbs.

#### Schematic:



**RoHS Compliance:** As of manufacturing date February 2005, all standard products meet the requirements of 2002/95/EC, known as the RoHS initiative.

\* Upon printing, this document is considered "uncontrolled". Please contact Triad Magnetics' website for the most current version.



.203 X .375, 4 SLOTS.

Web: [www.TriadMagnetics.com](http://www.TriadMagnetics.com)  
Phone 951-277-0757  
Fax 951-277-2757

22520B Temescal Canyon Road  
Corona, California  
92883

Published Date: February 13, 2007