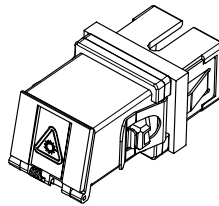
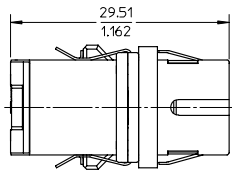
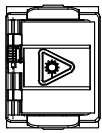
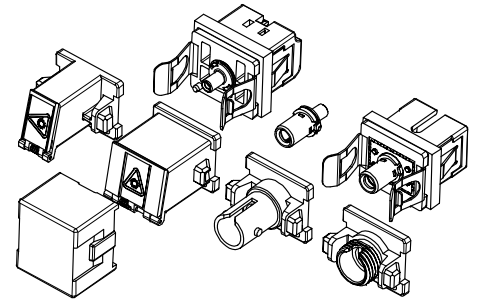
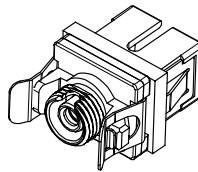
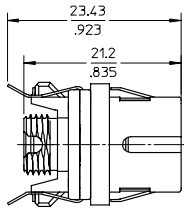
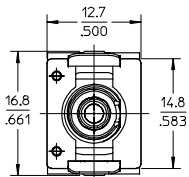


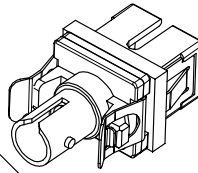
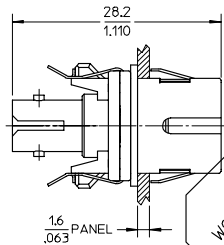
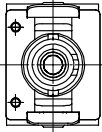
SC BASE/SC MODULE



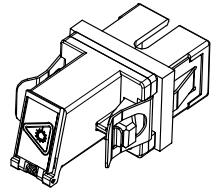
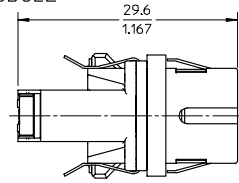
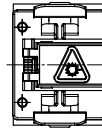
SC BASE/FC MODULE



SC BASE/ST MODULE



SC BASE/LC MODULE

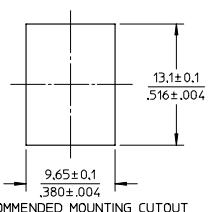
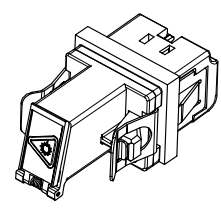
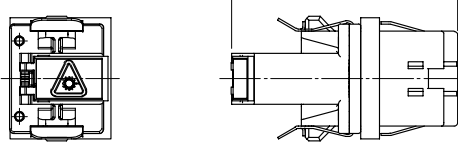


NOTES:
ALL DIMENSIONS ARE FOR REFERENCE ONLY.

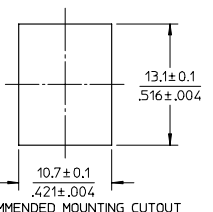
WORK-AREA PLOT

ENTER DESCRIPTION EC NO: MF2007-0670 DRAWN/SERIALIZED: 2007/05/07 CHKD: 2007/05/07 APPR: SMIGO 2007/05/11 REV:	QUALITY SYMBOLS	GENERAL TOLERANCES (UNLESS SPECIFIED)		DIMENSION STYLE	SCALE	DESIGN UNITS	THIRD ANGLE PROJECTION	
	▽=0 ▽=0	mm	INCH	MM/IN	2:1	METRIC		
		4 PLACES ± --- ± ---	3 PLACES ± --- ± ---	DRAWN BY	DATE	TITLE		
		2 PLACES ± --- ± ---	1 PLACE ± --- ± ---	SERNST	2006/02/13	DEVELOPMENT KIT UNIVERSAL ADAPTER		
	ANGULAR ± 1 °		DRAFT WHERE APPLICABLE MUST REMAIN WITHIN DIMENSIONS	CHECKED BY	DATE	MOLEX INCORPORATED		
				DSZ/ILAGYI	2006/03/07	MATERIAL NO.		
				APPROVED BY	DATE	DOCUMENT NO.		
				SMIGO	2006/03/07	1061540000		
				SIZE		SD-106154-0000		
				B		SHEET NO.		
						1 OF 2		
						THIS DRAWING CONTAINS INFORMATION THAT IS PROPRIETARY TO MOLEX INCORPORATED AND SHOULD NOT BE USED WITHOUT WRITTEN PERMISSION		

LC BASE/LC MODULE

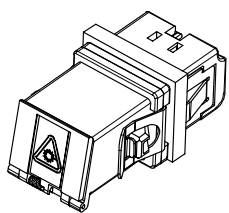
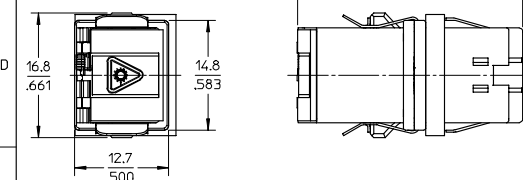


RECOMMENDED MOUNTING CUTOUT FOR SC BASE (SEE NOTE)
(1.6mm THICK PANEL)

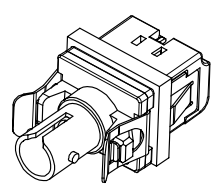
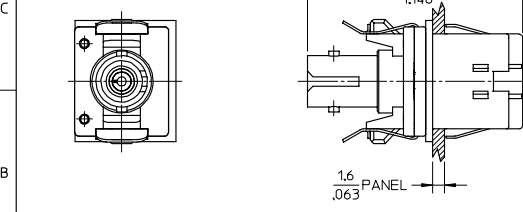


RECOMMENDED MOUNTING CUTOUT FOR LC BASE (SEE NOTE)
(1.6mm THICK PANEL)

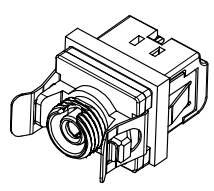
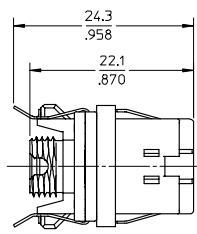
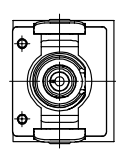
LC BASE/SC MODULE



LC BASE/ST MODULE



LC BASE/FC MODULE



NOTE:
LC BASE CUTOUT MAY ALSO BE USED FOR THE SC BASE, DESPITE THE ADDITIONAL MOVEMENT, THE EMI GASKET WILL STILL FUNCTION AND EMI PROTECTION WILL NOT BE COMPROMISED.

ENTER DESCRIPTION EC NO: MF2007-0670 DRAWN BY: SERNST CHKD: DSZ/ILAGYI APPR: SMIGO 2007/05/07 2007/05/07 2007/05/11	QUALITY SYMBOLS	GENERAL TOLERANCES (UNLESS SPECIFIED)		DIMENSION STYLE	SCALE	DESIGN UNITS	THIRD ANGLE PROJECTION	
	▽=0 ▽=0	mm	INCH	MM/IN	2:1	METRIC		
		4 PLACES ± --- ± ---	3 PLACES ± --- ± ---	DRAWN BY	DATE	TITLE		
		2 PLACES ± --- ± ---	1 PLACE ± --- ± ---	SERNST	2006/02/13	DEVELOPMENT KIT UNIVERSAL ADAPTER		
				CHECKED BY	DATE	MOLEX INCORPORATED		
				DSZ/ILAGYI	2006/03/07	SHEET NO.		
				APPROVED BY	DATE	2 OF 2		
				SMIGO	2006/03/07	SD-106154-0000		
				MATERIAL NO.	1061540000	THIS DRAWING CONTAINS INFORMATION THAT IS PROPRIETARY TO MOLEX INCORPORATED AND SHOULD NOT BE USED WITHOUT WRITTEN PERMISSION		
				SIZE	B			