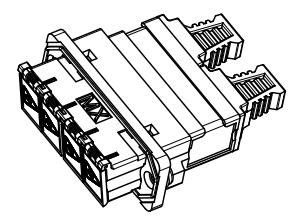
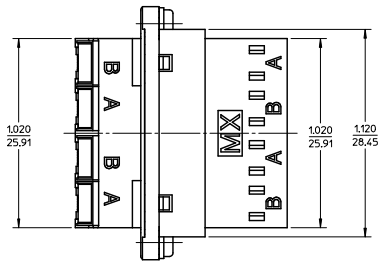
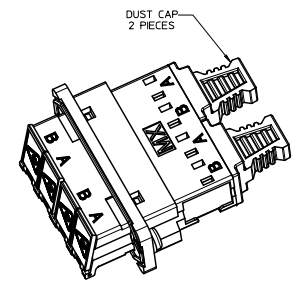
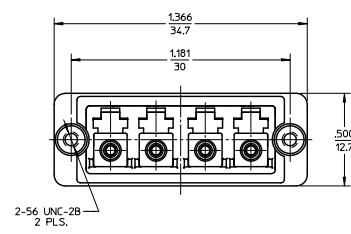
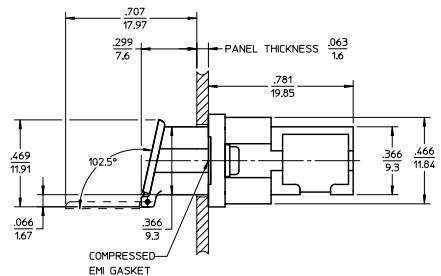
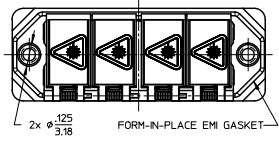


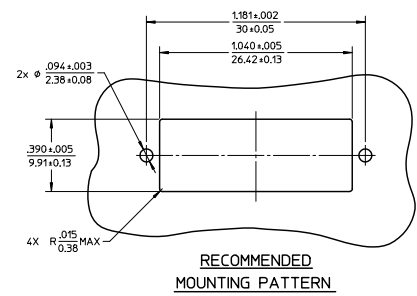
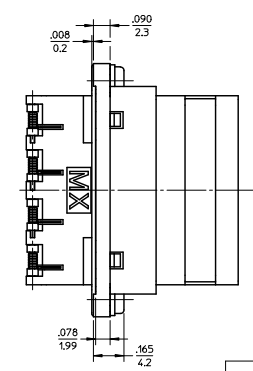
13	12	11
ADAPTER P/N	RECEPTACLE COLOR	LC DOOR COLOR
106123-0600	BLUE	BLUE
106123-0650	GREEN	GREEN



ISO VIEW 2
SCALE 2:1



ISO VIEW 1
SCALE 2:1



RECOMMENDED
MOUNTING PATTERN

- NOTES.
1. ALL DIMENSIONS ARE FOR REFERENCE.
 2. TWO DUST CAPS SHOWN IN ISOMETRIC VIEWS ONLY.
 3. LC EMI QUAD ADAPTER HAS SC DUPLEX ADAPTER FOOTPRINT.

ENTER DESCRIPTION EC NO: MF2010-0363 DRAWN BY: YB CHKD: LGUMIN APPR: LGUMIN REV: C1	QUALITY SYMBOLS ▽=0 ▽=0	GENERAL TOLERANCES (UNLESS SPECIFIED)		DIMENSION STYLE IN/MM		SCALE 2.5:1	DESIGN UNITS INCH	THIRD ANGLE PROJECTION	
		4 PLACES ±--- ±---	3 PLACES ±--- ±---	2 PLACES ±--- ±---	1 PLACE ±--- ±---	DRAWN BY YB	DATE 3.03.06	TITLE LC EMI QUAD ADAPTER SCREW MOUNT	
		ANGULAR ±---°	DRAFT WHERE APPLICABLE MUST REMAIN WITHIN DIMENSIONS		SEE TABLE	APPROVED BY LGUMIN	DATE 2010/02/23	MATERIAL NO. SD-106123-0600	
		MATERIAL NO. SD-106123-0600		DOCUMENT NO. SD-106123-0600		SHEET NO. 1 OF 1		MOLEX INCORPORATED	