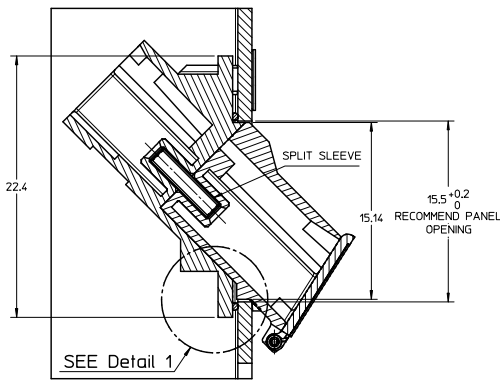
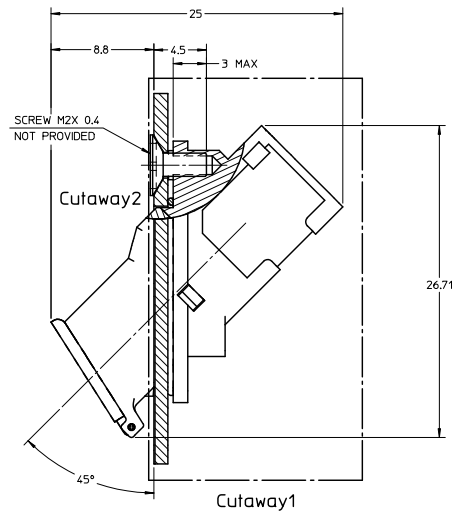
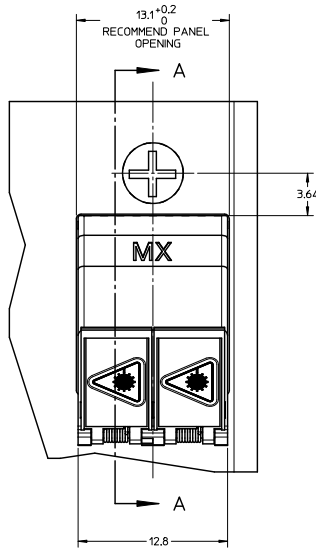


ADAPTER P/N	PLASTIC RECEPTACLE COLOR	SPLIT SLEEVE MATERIAL	SHUTTER DOORS MATERIAL
106115-3200	BLUE	Zr	METAL
106115-3201	GREEN		
106115-3206	BLUE	Ph. Bronze	PLASTIC, COLOR - BLUE
106115-3205	BLUE	Zr	

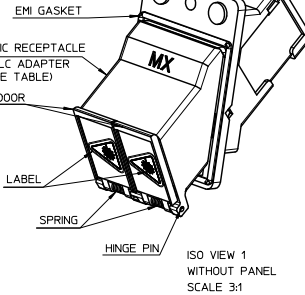


SECTION A-A

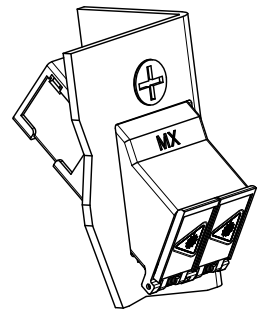


Cutaway2

METAL RECEPTACLE HALF LC ADAPTER



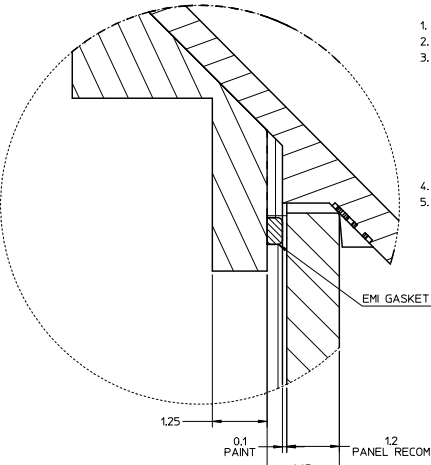
ISO VIEW 1 WITHOUT PANEL SCALE 3:1



ISO VIEW 2 SCALE 3:1

NOTES:

- ALL DIMENSIONS ARE FOR REFERENCE ONLY.
- PARTS SHOWN ASSEMBLED FOR CUSTOMER REFERENCE ONLY.
- MATERIAL AND PLATING:
 - METAL RECEPTACLE HALF LC ADAPTER-ZINC DIE CAST PLATING-NICKEL.
 - PLASTIC RECEPTACLE HALF LC ADAPTER-POLYETHER IMIDE (PEI)UL94 V-0.
 - GASKET-SILICONE CONDUCTIVE ELASTOMER SNN 45.
 - SPLIT SLEEVE-ZIRCONIA.
 - LABEL-POLYESTER(UL 969)
- ALL OTHER PARTS-METAL, EXCEPT PLASTIC SHUTTER DOORS FOR P/N 1061153205.
- LC DUPLEX WASH CAP (DUST CAP) NOT SHOWN-TPV UL94 V-0
- ADAPTERS SHALL BE PACKED IN TRAYS.



Detail 1 SCALE 15:1

ENTER DESCRIPTION E/C NO. ME2010-0100 DRAWN: BENDYAK CHECKED: WCHEN APPROVED: WCHEN	QUALITY SYMBOLS ▽=0 ▽=0	GENERAL TOLERANCES (UNLESS SPECIFIED)		DIMENSION STYLE MM ONLY		SCALE 4:1	DESIGN UNITS METRIC	THIRD ANGLE PROJECTION
		4 PLACES ±	3 PLACES ±	2 PLACES ±	1 PLACE ±	DRAWN BY RPACIFIC1	DATE 2006/01/31	TITLE LC ADAPTER (EMI) 45 DEG SCREW MOUNT
		ANGULAR ±1/2°		APPROVED BY WCHEN <td>DATE 2010/08/30</td> <td colspan="2">MOLEX INCORPORATED</td>		DATE 2010/08/30	MOLEX INCORPORATED	
		DRAFT WHERE APPLICABLE MUST REMAIN WITHIN DIMENSIONS		MATERIAL NO. SEE TABLE		DOCUMENT NO. SD-106115-3200	SHEET NO. 1 OF 1	
		THIS DRAWING CONTAINS INFORMATION THAT IS PROPRIETARY TO MOLEX INCORPORATED AND SHOULD NOT BE USED WITHOUT WRITTEN PERMISSION						