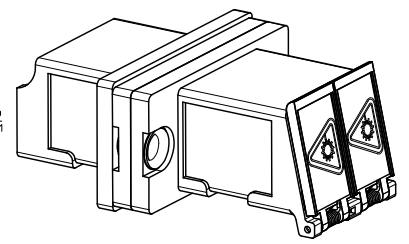
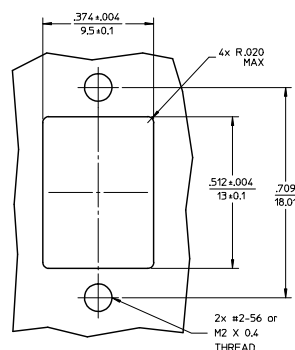
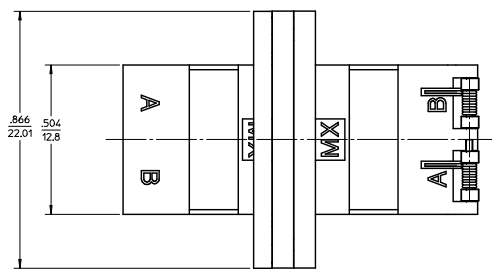
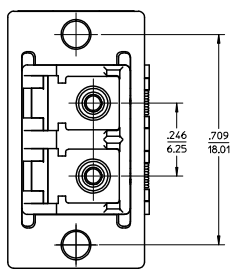
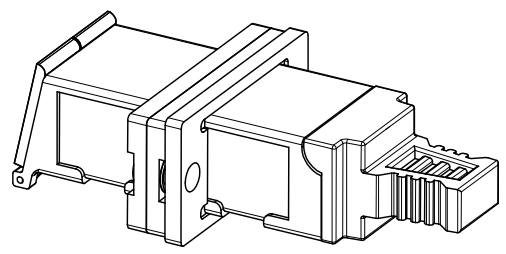
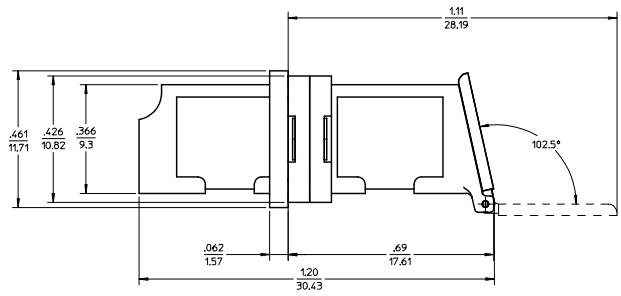


13 12 11 10 9 8 7 6 5 4 3 2 1



RECOMMENDED MOUNTING PATTERN

- NOTES:
1. ALL DIMENSIONS ARE FOR REFERENCE ONLY.
 2. CONDUCTIVE GASKET IS SUPPLIED WITH PART.
 3. PART IS DIECAST.
 4. ADAPTERS TO BE PACKAGED IN TRAY P/N 86934-1006

ENTER DESCRIPTION EC NO: MF2010-0005 DRW: RKPZNER 2009/07/17 CHK: 2009/07/22 APPR: LGJMIN 2009/07/23	QUALITY SYMBOLS ▽=0 ▽=0	GENERAL TOLERANCES (UNLESS SPECIFIED)		DIMENSION STYLE	SCALE	DESIGN UNITS	THIRD ANGLE PROJECTION	
		mm	INCH	IN/MM	4:1	INCH		
		4 PLACES ±	±	INCH	DATE	TITLE		
		3 PLACES ±	±	INCH	SM 9/12/2007	LC-D EMI ADAPTER		
2 PLACES ±	±	INCH	CHECKED BY	DATE	SCREW MT.ZR.W/SHUTTERS			
1 PLACE ±	±	INCH	BA 9/14/2007	APPROVED BY	DATE	MOLEX INCORPORATED		
ANGULAR ±1/2°		DRAFT WHERE APPLICABLE MUST REMAIN WITHIN DIMENSIONS		MATERIAL NO.	DOCUMENT NO.	SHEET NO.		
				1061151127	SD-106115-1127	1 OF 1		
THIS DRAWING CONTAINS INFORMATION THAT IS PROPRIETARY TO MOLEX INCORPORATED AND SHOULD NOT BE USED WITHOUT WRITTEN PERMISSION								

12 11 10 9 8 7 6 5 4 3 2 1