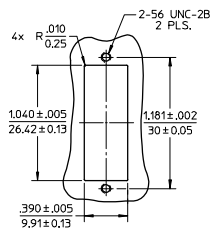
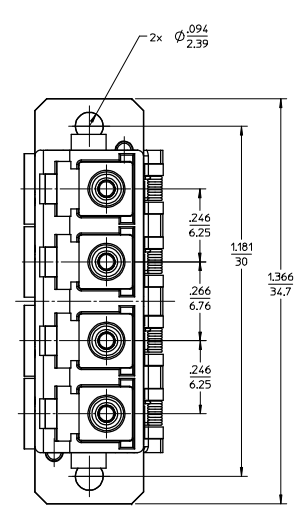
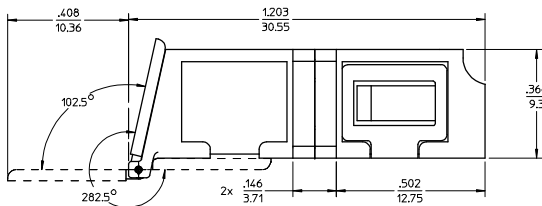
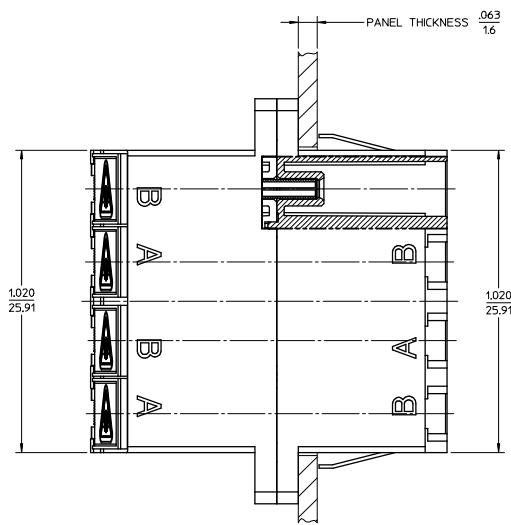
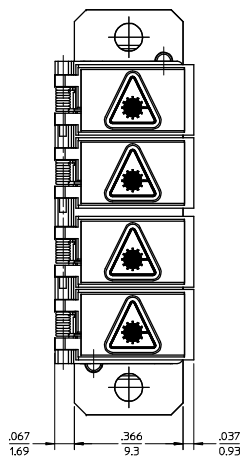
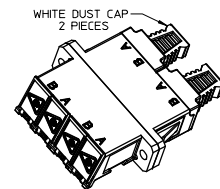
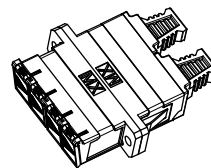


13	12	11
LC QUAD ADAPTER P/N	LC QUAD ADAPTER COLOR	SPLIT SLEEVE MATERIAL
106123-0200	BLUE	ZR
106123-0205*		
106123-1200	BEIGE	PHOSPHOR BRONZE
106123-1205*		
106123-2200	GREEN	ZR
106123-3200	AQUA	PHOSPHOR BRONZE
106123-3205*		



RECOMMENDED
MOUNTING PATTERN
SCALE 1.5:1



ISO VIEW 2
SCALE 1.5:1

ISO VIEW 1
SCALE 1.5:1

NOTES:

1. ALL DIMENSIONS ARE FOR REFERENCE.
2. DUST CAPS NOT SHOWN ON FRONT, BOTTOM AND RIGHT VIEW.
3. LC QUAD ADAPTER HAS SC DUPLEX ADAPTER FOOTPRINT.
- *4. P/NS MARKED WITH(*) ARE BULK PACKED IN QUANTITIES OF 100 pcs.

ENTER DESCRIPTION E.C. NO. / MFG DRAWN BY CHKD. APPR. REV	QUALITY SYMBOLS ▽=0 ▽=0	GENERAL TOLERANCES (UNLESS SPECIFIED)		DIMENSION STYLE	SCALE	DESIGN UNITS	THIRD ANGLE PROJECTION
		mm	INCH	IN/MM	4:1	INCH	
A1	4 PLACES	±---	±---	DRAWN BY	DATE	TITLE	LC QUAD ADAPTER WITH SHUTTERS (SCREW AND SNAP MOUNT) MOLEX INCORPORATED
	3 PLACES	±---	±---	PGIBLIN	2005/11/21		
	2 PLACES	±---	±---	CHECKED BY	DATE		
	1 PLACE	±---	±---	APPROVED BY	DATE		
	ANGULAR	±---	±---	MATERIAL NO.	DOCUMENT NO.	SHEET NO.	
	DRAFT WHERE APPLICABLE MUST REMAIN WITHIN DIMENSIONS			SEE TABLE		SD-106123-X200	1 OF 1
				SIZE C	THIS DRAWING CONTAINS INFORMATION THAT IS PROPRIETARY TO MOLEX INCORPORATED AND SHOULD NOT BE USED WITHOUT WRITTEN PERMISSION		