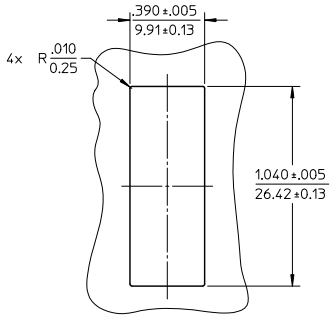
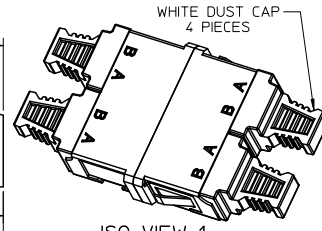
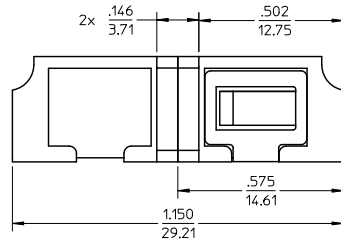
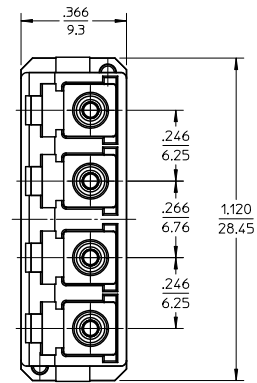
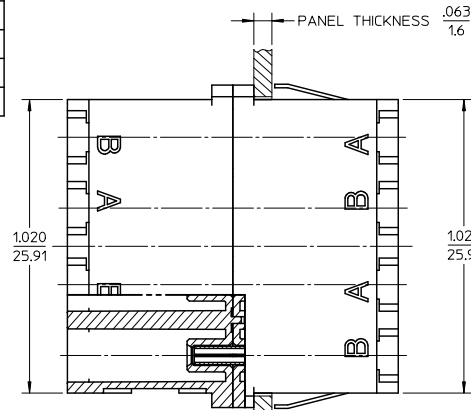


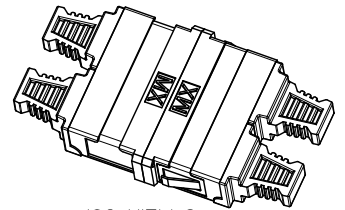
LC QUAD ADAPTER P/N	LC QUAD ADAPTER COLOR	SPLIT SLEEVE MATERIAL
106123-0300	BLUE	ZR
106123-1300	BEIGE	PHOSPHOR BRONZE
106123-2300	GREEN	ZR
106123-3300	AQUA	PHOSPHOR BRONZE
106123-1350	BLUE	PHOSPHOR BRONZE



RECOMMENDED MOUNTING PATTERN SCALE 2:1



ISO VIEW 1 SCALE 1.5:1



ISO VIEW 2 SCALE 1.5:1

- NOTES:
- ALL DIMENSIONS ARE FOR REFERENCE.
 - DUST CAPS NOT SHOWN ON FRONT, BOTTOM AND RIGHT VIEW.
 - LC QUAD ADAPTER HAS SC DUPLEX ADAPTER FOOTPRINT.

ENTER DESCRIPTION EC NO: MF2010-0392 DRAWN BY: ZVNER CHKD: 2010/03/16 APPR: LGUMIN 2010/03/17 A1	QUALITY SYMBOLS ▽=0 ▽=0	GENERAL TOLERANCES (UNLESS SPECIFIED)		DIMENSION STYLE IN/MM		SCALE 3:1	DESIGN UNITS INCH	THIRD ANGLE PROJECTION		
		4 PLACES ± --- ± ---	3 PLACES ± --- ± ---	2 PLACES ± --- ± ---	1 PLACE ± --- ± ---	ANGULAR ± ---°	DRAWN BY PGIBLIN	DATE 2005/11/21	CHECKED BY DATE	TITLE LC QUAD ADAPTER SMALL FLANGE SNAP MOUNT
		DRAFT WHERE APPLICABLE MUST REMAIN WITHIN DIMENSIONS			SEE TABLE	MATERIAL NO. 1GUMIN	DATE 2010/03/16	APPROVED BY LGUMIN	DOCUMENT NO. SD-106123-X300	SHEET NO. 1 OF 1
		THIS DRAWING CONTAINS INFORMATION THAT IS PROPRIETARY TO MOLEX INCORPORATED AND SHOULD NOT BE USED WITHOUT WRITTEN PERMISSION								