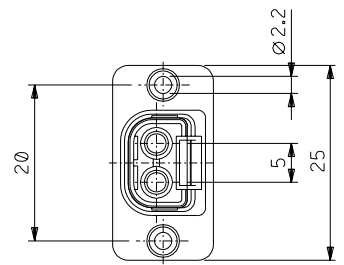
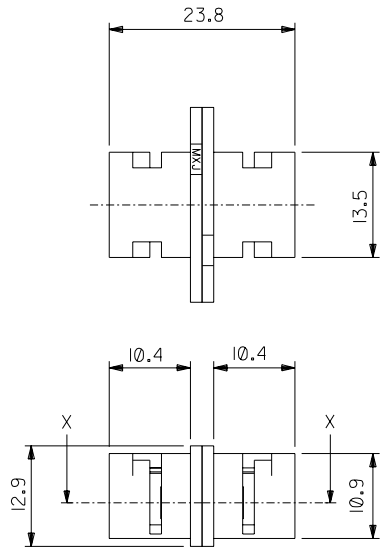
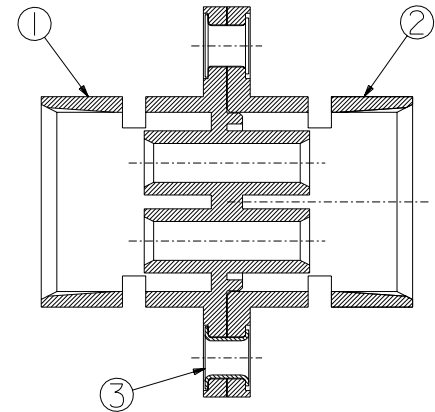


DWG. NO. SD-501266-001



NO.	部品名称 PART TITLE	材質 MATERIAL	数量 QTY
①	アダプタ パートA ADAPTER PART-A	ポリエステル (ガラス) 入り POLYESTER UL94V-0 (GLEXY)	1
②	アダプタ パートB ADAPTER PART-B	ポリエステル (ガラス) 入り POLYESTER UL94V-0 (GLEXY)	1
③	ハトメ HATOME	黄銅 BRASS	2



SECTION X-X
(SCALE:4-1)

注記
NOTES

- 1. 嵌合プラグ : 501270-0000
MATING PLUG : 501270-0000

501266-0000
MATERIAL NO.
MODEL NO.: 501266-000*

DO NOT SCALE DRAWING	DESIGN NO.	REV	MATERIAL	GENERAL TOLERANCES:	SCALE	DESIGN UNITS	TITLE:	DIMENSIONS:	SHT	REV		
	DRWN:	0	材料	(UNLESS SPECIFIED)	2-1	mm <input checked="" type="checkbox"/> INCH					NEW SMI CONN.	mm
	CHK:		SEE NOTES	10 UNDER	+0.2	DRAWN BY & DATE	MOLEX INCORPORATED	MATERIAL NO.	DRAWING NO.	SHEET NO.		
	APPR:		FINISH	10 OVER	+0.25	TE.NAGASE '04/05/28					SD-501266-001	SD-501266-001
DESIGN NO.		仕上付	30 UNDER	+0.3	A.SHIMOTSU '04/05/28	DRAWING NO.						
DRWN:		適用電線範囲	30 OVER	+0.3	A.SHIMOTSU '04/05/28		1 OF 1					
CHK:		WIRE RANGE	ANGLE	+3°	CAD FILENAME		SIZE					
APPR:		適用電線範囲	INS. RANGE		SD-501266-001.S01	INCORPORATED AND SHOULD NOT BE USED WITHOUT WRITTEN PERMISSION.	B					
DESIGN NO.		RELEASED '04/05/28								EN-02J(097) MXJ-54		
DRWN:		J2004-4181										
CHK:		TE.NAGASE										
APPR:		A.SHIMOTSU										
DESIGN NO.		A.SHIMOTSU										
DRWN:		A.SHIMOTSU										
CHK:		A.SHIMOTSU										
APPR:		A.SHIMOTSU										