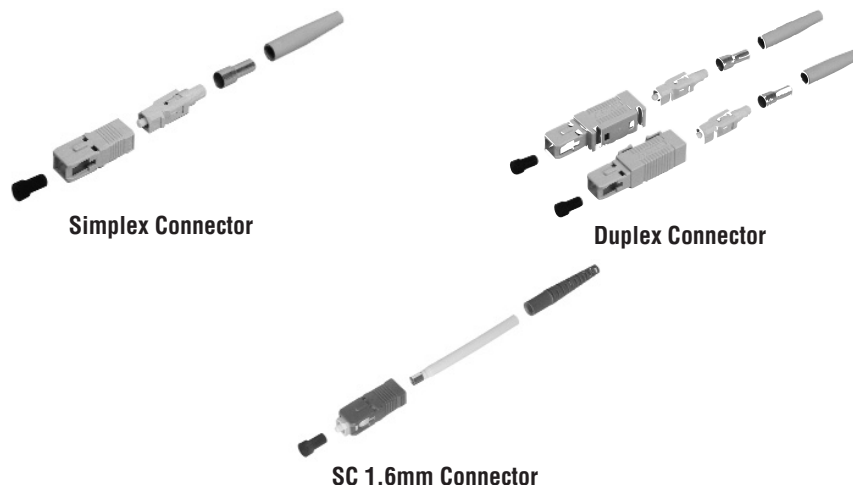


SC Connectors

Product Facts

- One-piece connector body:
 - Fastest assembly
 - Field installable
 - Anaerobic epoxy compatible
- Compliant with
 - JIS C-5973
 - Fibre Channel
 - TIA FOCIS-3
- Pre-radiused ferrules
- For 125 μm cladding diameter



Performance Characteristics

Insertion Loss — <0.2 dB Typical
Durability — 500 Cycles
 TIA 586B Compliant

Multimode SC Connector Kits

Ferrule Type	Crimp Body Material	Jacket Size	Simplex / Duplex	Indiv. Pack w/ Strain Relief	Bulk Pack No Strain Relief	Bulk Pack w/ Strain Relief	Crimp Tool	Instruction Sheet
Ceramic	Polymer	3.0 mm	Simplex	503948-1	503948-3	503948-2	503911-1	408-4159
Ceramic	Polymer	3.0 mm	Duplex	504657-1	504657-3	504657-2	503911-1	408-4211
Polymer	Polymer	3.0 mm	Simplex	1457045-2	1457045-3	—	503911-1	408-4364
Polymer	Polymer	3.0 mm	Duplex	1457044-2	—	—	503911-1	408-4363
Ceramic	Metal	2.4 mm	Simplex	1588715-3	1588715-4	—	1588176-1	408-8674
Ceramic	Metal	2.4 mm	Duplex	1693775-3	1693775-4	—	1588176-1	408-8674
Ceramic	Metal	1.6-2.0 mm	Simplex	1588715-1	1588715-2	—	1588176-1	408-8674
Ceramic	Metal	1.6-2.0 mm	Duplex	1693775-1	1693775-2	—	1588176-1	408-8674
Ceramic	Polymer	900 μm	Simplex	504932-1	504932-3	504932-2	n/a	408-8674
Ceramic	Polymer	900 μm	Duplex	504929-1	—	504929-2	n/a	408-8674

Performance Characteristics

Insertion Loss — <0.2 dB Typical
Return Loss — <-55 dB Typical
Durability — 200 Cycles

Singlemode SC Connector Kits - Polymer Crimp Body

Ferrule Type	Crimp Body Material	Jacket Size	Simplex / Duplex	Indiv. Pack w/ Strain Relief	Bulk Pack No Strain Relief	Bulk Pack w/ Strain Relief	Crimp Tool	Instruction Sheet
Ceramic	Polymer	3.0 mm	Simplex	504646-2	504646-6	504646-4	503911-1	408-4208
Ceramic	Polymer	3.0 mm	Duplex	504655-1	504655-3	504655-2	503911-1	408-4212
Ceramic	Polymer	900μm	Simplex	492123-3	492123-7	492123-4	n/a	408-8674
Ceramic	Polymer	900μm	Duplex	—	—	504655-4	n/a	408-8674

Performance Characteristics for GR-326 Style Product

Insertion Loss — <0.2 dB Typical
Return Loss — <-59 dB Typical
Durability — 200 Cycles
 Tested to GR-326
 Tunable - 6 positions

GR-326 Style Singlemode SC Connector Kits - Metal Crimp Body

Ferrule Type	Crimp Body Material	Jacket Size	Simplex / Duplex	Indiv. Pack w/ Strain Relief	Bulk Pack w/ Strain Relief	Crimp Tool	Instruction Sheet
Ceramic	Metal	3.0 mm	Simplex	1457215-4	1457215-2	(1) 492131-1 (1) 58532-1	408-8674
Ceramic	Metal	3.0 mm	Duplex	1754599-2	1754599-4	(1) 492131-1 (1) 58532-1	408-8674
Ceramic	Metal	2.4 mm	Simplex	1588714-5	1588714-6	1588176-1	408-8674
Ceramic	Metal	2.4 mm	Duplex	1693776-5	1693776-6	1588176-1	408-8674
Ceramic	Metal	1.6-2.0 mm	Simplex	1588714-2	1588714-4	1588176-1	408-8674
Ceramic	Metal	1.6-2.0 mm	Duplex	1693776-2	1693776-4	1588176-1	408-8674

Performance Characteristics

Insertion Loss — <0.2 dB Typical
Return Loss — <-65 dB Typical
Durability — 200 Cycles
 Tunable - 6 positions

GR-326 Style Singlemode SC/APC Connector Kits - Metal Crimp Body

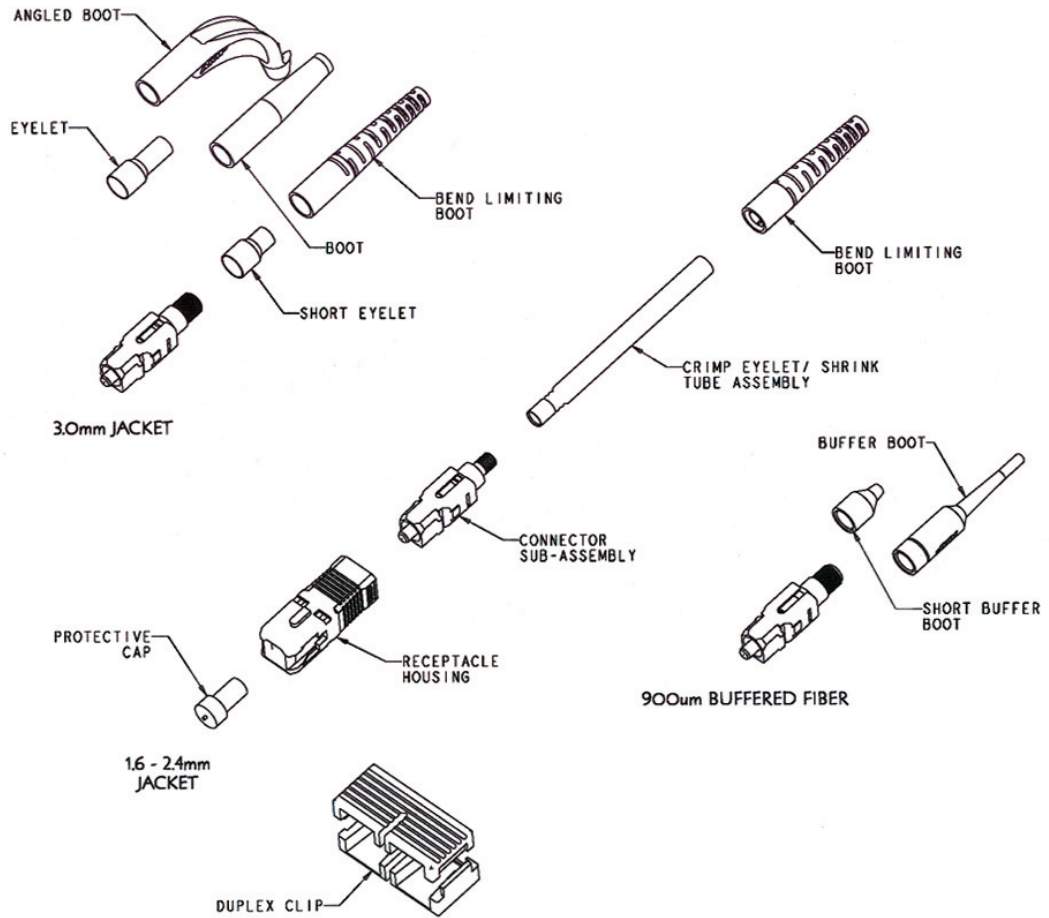
Ferrule Type	Crimp Body Material	Jacket Size	Simplex / Duplex	Bulk Pack w/ Strain Relief	Crimp Tool
Ceramic	Metal	3.0 mm	Simplex	4-1695500-3	(1) 492131-1 (1) 58532-1
Ceramic	Metal	2.4 mm	Simplex	3-1695500-3	1588176-2
Ceramic	Metal	1.6-2.0 mm	Simplex	2-1695500-3	1588176-1
Ceramic	Metal	900μm	Simplex	1-1695500-3	1588176-1

© Copyright 2004 by Tyco Electronics Corporation. All Rights Reserved. Dimensions are in millimeters with inches in brackets unless otherwise specified. Dimensions are shown for reference purposes only.

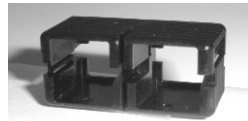


SC Connectors (Continued)

SC Connector Components



SC Duplex Clip (Black):
Part Number 1348522-1



SC Connector Component Selection Chart (bulk packaged)

Fiber Type	Simplex Connector Sub-Assembly	Duplex Clip*	Cable Size	Crimp Eyelet w/ Heat Shrink	Crimp Eyelet	Strain Relief Part Number**
Singlemode - GR-326 Style	1693917-4	(2) 1348522-1	1.6-2.0 mm 2.4 mm	1374150-1 1588189-1	—	1588153-X 1588153-X
	492058-4	(2) 1348522-1	3.0 mm	—	504973-3	1588491-X
Singlemode - Polymer Crimp Body	503976-3	(2) 1348522-1	2.4 mm	—	503970-6	503971-X
			3.0 mm	—	503970-3	503971-X
			900 μm	—	—	1457493-X (long) 1278309-X (short)
Multimode - Ceramic Ferrule	1693917-5	(2) 1348522-1	1.6-2.0 mm 2.4 mm	1374150-1 1588189-1	—	1588153-X 1588153-X
			3.0 mm	—	503970-3	503971-X
			900 μm	—	—	1457493-X (long) 1278309-X (short)
Multimode - Polymer Ferrule	503922-3	(2) 1348522-1	3.0 mm 2.4 mm	—	503970-3 503970-6	503971-X 503971-X
			900 μm	—	—	1457493-X (long) 1278309-X (short)

* For Fibre Channel compliant assemblies, use one (1) piece each of pn 503487-Y and 503488-Y. (Dash refers to color - refer to customer drawing for details).
** Strain relief dash number indicates color -- see page 14 for details.

SC Connectors (Continued)



3.0mm - GR-326 Style



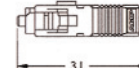
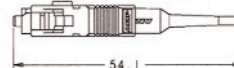
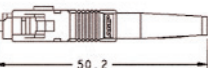
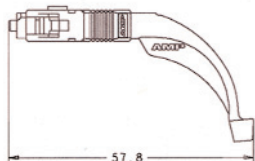
3.0mm Angled



900µm Short



900µm



SC Strain Reliefs — Jacketed Cable

Description	Part Number					
	GR-326 Style	Jacket Color				
	Black	Yellow	Red	Beige	Blue	
3.0 mm	No	1-503971-0	503971-7	1-503971-1	503971-1	503971-2
2.4 mm	No	1-503971-2	503971-8	1-503971-3	503971-3	503971-4
3.0 mm	Yes	1588491-3	1588491-4	—	1588491-5	1588491-2
1.6 mm - 2.4 mm	Yes	1588153-3	1588153-4	—	1588153-5	1588153-2

SC Strain Reliefs — Angled

Description	Part Number				
	Jacket Color				
	Black	Yellow	Red	Beige	Blue
3.0 mm Simplex	1-1278705-5	1-1278705-7	1-1278705-6	1-1278705-4	1-1278705-3

SC Strain Reliefs — 900 micron

Description	Part Number				
	Jacket Color				
	Black	Yellow	Red	Beige	Blue
Long (33mm) 900µm	1457493-3	1457493-5	1457493-4	1457493-9	1457493-1
Short (10 mm) 900 µm	1278309-1	—	1278309-3	—	1278309-2

SC Low Loss Loopback Connector

Part Number 503141-1

Product Facts

- 62.5/125 Multimode
- Use for Equipment Testing
- 0.6 dB Insertion Loss
- 0.5" Ferrule Centerline

Part Number 503141-2

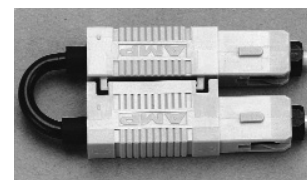
Product Facts

- 50/125 Multimode
- Use for Equipment Testing
- 0.8 dB Insertion Loss
- 0.5" Ferrule Centerline

Part Number 504883-1

Product Facts

- Singlemode
- Use for Equipment Testing
- 1.5 dB Insertion Loss
- 0.5" Ferrule Centerline



© Copyright 2004 by Tyco Electronics Corporation. All Rights Reserved. Dimensions are in millimeters with inches in brackets unless otherwise specified. Dimensions are shown for reference purposes only.



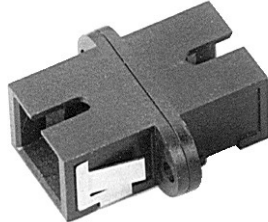
SC Connectors (Continued)

SC Adapters

Product Facts

- Suitable for any SC connector
- Available with metal or ceramic alignment sleeves

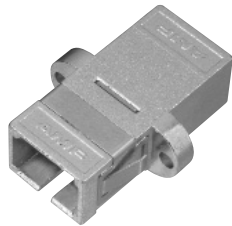
- Choice of housing colors
- Assortment of hybrid configurations available
- Slide-on Cover Available
- Duplex adapters accept two simplex connectors or one duplex connector
- Mounting screws available P/N 503663-1



SC Simplex Adapter - Plastic



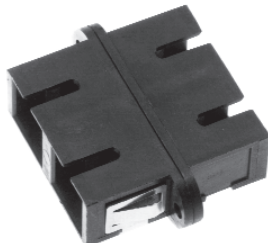
Flange-less SC Simplex Adapter - Plastic



SC Simplex Adapter - Metal



Flange-less SC Simplex Adapter - Metal



SC Duplex Adapter - Plastic

SC Simplex Adapter - Plastic

Alignment Sleeve Material/Application	Housing Color	Part Numbers	
		Single Pkg.	50 pc. Bulk Pkg.
Metal/MM only	Beige	504614-1	504614-2
Metal	Black	502632-7	1-502632-4
Metal	Blue	502632-8	1-502632-5
Metal	Beige	502632-9	1-502632-6
Ceramic	Black	1-502632-0	1-502632-7
Ceramic	Blue	1-502632-1	1-502632-8
Ceramic	Beige	1-502632-2	1-502632-9
Ceramic/APC	Green	2-106901-6	—

Flange-less SC Simplex Adapter - Plastic

Alignment Sleeve Material	Housing Color	Part Numbers
		Single Pkg.
Metal	Black	504632-1
Ceramic	Black	504632-2
Metal	Blue	504632-3
Ceramic	Blue	504632-4

SC Simplex Adapter - Metal

Alignment Sleeve Material	Housing Color	Part Numbers	
		Single Pkg.	50 pc. Bulk Pkg.
Metal	Electroless Nickel	1278348-1	1278348-2
Ceramic	Electroless Nickel	1278348-3	1278348-4

Flange-less SC Simplex Adapter - Metal

Alignment Sleeve Material	Housing Color	Part Numbers	
		Single Pkg.	50 pc. Bulk Pkg.
Metal	Electroless Nickel	1278348-5	1278348-6
Ceramic	Electroless Nickel	1278348-7	1278348-8

SC Duplex Adapter - Plastic

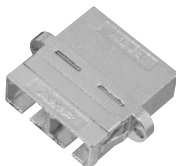
Alignment Sleeve Material/Application	Housing Color	Part Numbers	
		Single Pkg.	50 pc. Bulk Pkg.
Metal/MM only	Black	504640-4	—
Metal/MM only	Beige	504640-1	504640-2
Metal	Black	502776-7	1-502776-3
Metal	Blue	502776-8	1-502776-4
Metal	Beige	502776-9	1-502776-5
Ceramic	Black	1-502776-0	1-502776-6
Ceramic	Blue	1-502776-1	1-502776-7
Ceramic	Beige	1-502776-2	1-502776-8
Ceramic/APC	Green	2-502776-3	—

© Copyright 2004 by Tyco Electronics Corporation. All Rights Reserved. Dimensions are in millimeters with inches in brackets unless otherwise specified. Dimensions are shown for reference purposes only.

For drawings, technical data or samples, contact your Tyco Electronics sales engineer, call 1-800-522-6752, or visit our Website at: <http://www.tycoelectronics.com/fiberoptics>. Specifications subject to change. Consult Tyco Electronics for latest specifications.

SC Connectors (Continued)

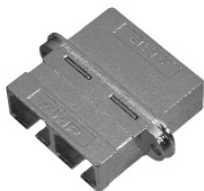
SC Adapters



SC Duplex Adapter

SC Duplex Adapter - Metal

Alignment Sleeve Material	Housing Color	Part Numbers	
		Single Pkg.	50 pc. Bulk Pkg.
Metal	Electroless Nickel	1278049-1	1278049-2
Ceramic	Electroless Nickel	1278049-3	1278049-4



SC Duplex Metal Adapter w/ EMI Shielding

Shielded SC Duplex Adapter - Metal

Alignment Sleeve Material	Housing Color	Part Numbers	
		Single Pkg.	50 pc. Bulk Pkg.
Metal	Electroless Nickel	1374223-1	1374223-2
Ceramic	Electroless Nickel	1374223-3	1374223-4

- Designed to help prevent EMI leak
- Ideal for high-speed applications

SC to ST Hybrid Adapters



SC to ST Simplex Adapter - Plastic

SC to ST Simplex Adapter - Plastic

Alignment Sleeve Material	Housing Color	Part Numbers	
		Single Pkg.	50 pc. Bulk Pkg.
Metal	Black	502780-1	502780-7
Metal	Blue	502780-2	502780-8
Metal	Beige	502780-3	502780-9
Ceramic	Black	502780-4	1-502780-0
Ceramic	Blue	502780-5	1-502780-1



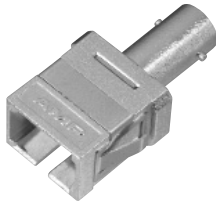
SC to ST Simplex Adapter - Metal

SC to ST Simplex Adapter - Metal

Alignment Sleeve Material	Housing Color	Part Numbers	
		Single Pkg.	50 pc. Bulk Pkg.
Ceramic	Electroless Nickel	1278350-3	1278350-4

SC Connectors (Continued)

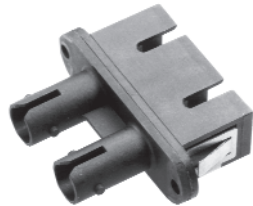
SC to ST Hybrid Adapters (Continued)



Flange-less SC to ST Simplex Adapter - Metal

Flange-less SC to ST Simplex Adapter - Metal

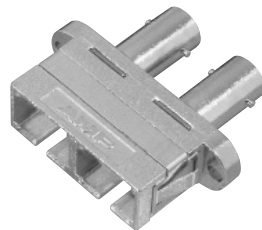
Alignment Sleeve Material	Housing Color	Part Numbers	
		Single Pkg.	50 pc. Bulk Pkg.
Ceramic	Electroless Nickel	1278350-7	1278350-8



SC to ST Duplex Adapter - Plastic

SC to ST Duplex Adapter - Plastic

Alignment Sleeve Material	Housing Color	Part Numbers	
		Single Pkg.	50 pc. Bulk Pkg.
Metal (MM Only)	Beige	504663-4	—
Metal	Black	503137-1	—
Metal	Blue	503137-2	—
Metal	Beige	503137-3	503137-9
Ceramic	Black	503137-4	—
Ceramic	Blue	503137-5	1-503137-1
Ceramic	Beige	503137-6	1-503137-2



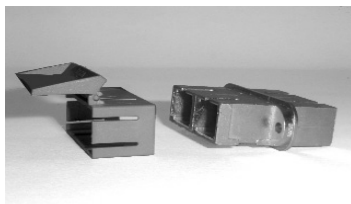
SC to ST Duplex Adapter - Metal

SC to ST Duplex Adapter - Metal

Alignment Sleeve Material	Housing Color	Part Numbers	
		Single Pkg.	50 pc. Bulk Pkg.
Metal	Electroless Nickel	1278051-1	1278051-2
Ceramic	Electroless Nickel	1278051-3	1278051-4



Slide-on Retractable Cover for LC Duplex and SC Simplex or Duplex Applications



Introducing the new Tyco Electronics' slide-on retractable cover for duplex LC and simplex or duplex SC applications. These retractable doors slip onto the end of existing Tyco Electronics adapters and can be mounted after the adapter has already been installed.

1693539-1 - for Simplex SC and Duplex LC Adapters (1457567 style)

1693540-1 - for use on all Tyco Electronics SC Duplex Adapters

ST Connectors — Epoxy Type

Product Facts

- Epoxy type connector
- Pre-radiused ferrule finish
- Available in bulk packages

Singlemode

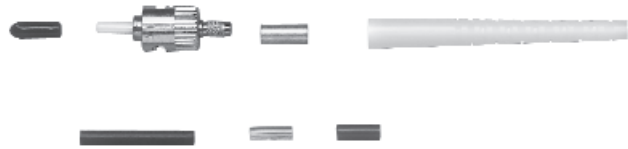
Ceramic Performance Characteristics

Insertion Loss — 0.3 dB typical
Back Reflection — <-40 dB typical
Durability — 200 cycles

Ceramic

Materials

Ferrule Material — Ceramic
Body Material — Nickel Plated Brass
Coupling Nut Material — Plated Die Cast
Nominal Fiber Size — 126



Singlemode ST Connector Kits

Ferrule Type	Body Material	Jacket Size*	Strain Relief Type & Color	Indiv. Pack w/ Strain Relief	Bulk Pack No Strain Relief	Bulk Pack w/ Strain Relief	Crimp Tool	Instruction Sheet
Ceramic	Metal	3.0 mm (900µm, 2.4mm)	Bend Limiting /Yellow	502579-2	—	—	53433-4	408-9645
Ceramic	Metal	3.0 mm (900µm, 2.4mm)	Short/Yellow	502580-2	—	502580-4	58433-4	408-9645
Ceramic	Metal	900µm	Bare Buffer /Yellow	503613-2	503613-4	—	58433-4	408-9645

* Jack sizes in parentheses can be accommodated with no additional purchases by using build-up tubing included in the kit part numbers listed.

Ceramic

Multimode Ceramic Performance Characteristics

Insertion Loss — 0.3dB typical
Durability — 500 cycles



Multimode ST Connector Kits - Ceramic Ferrule

Ferrule Type	Body Material	Coupling Nut Material	Jacket Size*	Strain Relief Type & Color	Indiv. Pack w/ Strain Relief	Bulk Pack No Strain Relief	Bulk Pack w/ Strain Relief	Crimp Tool	Instruction Sheet
Ceramic	Polymer	Polymer	3.0 mm	Short/Black	—	503569-1	503569-2	58433-4	408-9971
Ceramic	Polymer	Polymer	3.0 mm (900µm, 2.4mm)	Short/Black	503571-1	—	—	58433-4	408-9971
Ceramic	Polymer	Polymer	3.0 mm (900µm, 2.0mm, 2.4mm)	Bare Buffer/Black	503571-3	—	—	58433-4	408-9971
Ceramic	Polymer	Metal	3.0 mm	Short/Black	503677-2	503676-1	503677-1	58433-4	408-9971
Ceramic	Polymer	Metal	900µm	Bare Buffer/Black	—	—	503677-3	58433-4	408-9971
Ceramic	Metal	Metal	3.0 mm (900µm, 2.4mm)	Right Angle/Black	502674-1	—	—	58433-4	408-9645
Ceramic	Metal	Metal	3.0 mm	Short/Black	—	492458-3	492458-2	58433-4	408-9645
Ceramic	Metal	Metal	3.0 mm, 900µm	Bare Buffer/Black Bend Limiting/Black	492458-1	—	—	58433-4	408-9645
Ceramic	Metal	Metal	3.0 mm (900µm, 2.4mm)	Bare Buffer/Black	501380-1	—	—	58433-4	408-9645
Ceramic	Metal	Metal	3.0 mm (900µm, 2.4mm)	Short/Blue	1-501380-1	—	501380-9	58433-4	408-9645
Ceramic	Metal	Metal	3.0 mm (900µm, 2.4mm)	Short/Black	1-501380-6	—	—	58433-4	408-9645
Ceramic	Metal	Polymer	3.0 mm	None	—	1374332-2	—	58433-4	408-9645
Ceramic 140µm	Metal	Polymer	3.0 mm	Short/Black	—	—	1374332-1	58433-4	408-9645
Ceramic 140µm	Metal	Metal	3.0 mm (900µm, 2.4mm)	Bend Limiting/Black	501380-6	—	—	58433-4	408-9645

* Jack sizes in parentheses can be accommodated with no additional purchases by using build-up tubing included in the kit part numbers listed.

© Copyright 2004 by Tyco Electronics Corporation. All Rights Reserved. Dimensions are in millimeters with inches in brackets unless otherwise specified. Dimensions are shown for reference purposes only.

ST Connectors — Epoxy Type (Continued)

Polymer Composite

Multimode Polymer Composite Performance Characteristics

Insertion Loss — 0.3dB Typical

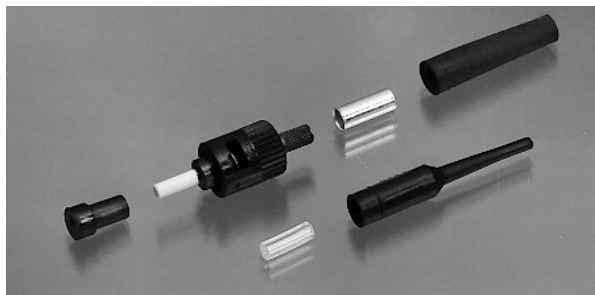
Durability — 500 Cycles

Materials

Ferrule — Composite Polymer

Body — Polymer

Coupling Nut — Polymer



Multimode ST Connector Kits - Polymer Ferrule

Ferrule Type	Body Material	Coupling Nut Material	Jacket Size	Strain Relief Type & Color	Indiv. Pack w/ Strain Relief	Bulk Pack No Strain Relief	Bulk Pack w/ Strain Relief	Crimp Tool	Instruction Sheet
Polymer	Polymer	Polymer	3.0 mm, 900µm	Short/Black Bare Buffer/Black	503415-1	—	—	58433-4	408-9971
Polymer	Polymer	Polymer	3.0 mm	Short/Black	—	503424-1	503424-3	58433-4	408-9971
Polymer	Polymer	Polymer	3.0 mm	Short/Beige	—	—	503424-5	58433-4	408-9971
Polymer	Polymer	Polymer	900µm	Bare Buffer/Black	—	—	503424-7	58433-4	408-9971

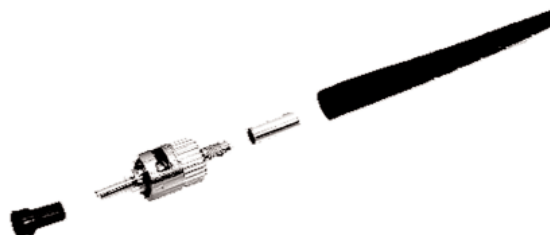
Stainless Steel

Multimode Stainless Steel Performance Characteristics

Insertion Loss — 0.3dB Typical

Operating Temp. Range —
-30°C to +70°C

Durability — 500 cycles



Multimode ST Connector Kits - Stainless Steel Ferrule

Ferrule Type	Ferrule Designation	Body Material	Coupling Nut Material	Jacket Size	Strain Relief Type & Color	Indiv Pack w/ Strain Relief	Bulk Pack No Strain Relief	Crimp Tool	Instruction Sheet
Stainless Steel	125	Metal	Metal	3.0 mm	Bend Limiting/ Black	504008-3	5-504008-4	58551-1	408-4151
Stainless Steel	140	Metal	Metal	3.0 mm	Bend Limiting/ Black	504008-7	—	58551-1	408-4151
Stainless Steel	231	Metal	Metal	3.0 mm	Bend Limiting/ Black	1-504008-4	—	58551-1	408-4151
Stainless Steel	240	Metal	Metal	3.0 mm	Bend Limiting/ Black	1-504008-3	—	58551-1	408-4151

© Copyright 2004 by Tyco Electronics Corporation. All Rights Reserved. Dimensions are in millimeters with inches in brackets unless otherwise specified. Dimensions are shown for reference purposes only.

For drawings, technical data or samples, contact your Tyco Electronics sales engineer, call 1-800-522-6752, or visit our Website at: <http://www.tycoelectronics.com/fiberoptics>. Specifications subject to change. Consult Tyco Electronics for latest specifications.

ST Connectors — Epoxy Type (Continued)

ST Connector Component Selection Chart (Bulk Packaged)

Fiber Type	Connector Sub-Assembly	Cable Size	Crimp Eyelet	Tubing	Strain Relief Part Number*	
Singlemode	502578-2	1.6-2.0 mm	501971-3	501275-2	503219-X 502128-X 501457-X	
		2.4 mm	501971-3	501275-1	502667-X 502128-X 501457-X	
		3.0 mm 900µm	501971-3 501971-3	— 502179-7	502667-X 503628-X	
Multimode - Ceramic Ferrule	492458-5	1.6-2.0 mm	501971-3	501275-2	503219-X 502128-X 501457-X	
		Metal Body, Metal Nut	2.4 mm	501971-3	501275-1	502667-X 502128-X 501457-X
		3.0 mm 900µm	501971-3 501971-3	— 502179-7	502667-X 503628-X	
Multimode - Ceramic Ferrule	501458-8	1.6-2.0 mm	501971-3	501275-2	503219-X 502128-X 501457-X	
		Metal Body, Polymer Nut	2.4 mm	501971-3	501275-1	502667-X 502128-X 501457-X
		3.0 mm 900µm	501971-3 501971-3	— 502179-7	502667-X 503628-X	
Multimode - Ceramic Ferrule	503676-5	1.6-2.0 mm	501971-3	501275-2	503219-X 502128-X 501457-X	
		Polymer Body, Metal Nut	2.4 mm	501971-3	501275-1	502667-X 502128-X 501457-X
		3.0 mm 900µm	501971-3 501971-3	— 502179-7	502667-X 503628-X	
Multimode - Ceramic Ferrule	503676-4	1.6-2.0 mm	501971-3	501275-2	503219-X 502128-X 501457-X	
		Polymer Body, Polymer Nut	2.4 mm	501971-3	501275-1	502667-X 502128-X 501457-X
		3.0 mm 900µm	501971-3 501971-3	— 502179-7	502667-X 503628-X	
Multimode - Polymer Ferrule	503424-9	1.6-2.0 mm	501971-3	501275-2	503219-X 502128-X 501457-X	
		Polymer Body, Polymer Nut	2.4mm	501971-3	501275-1	502667-X 502128-X 501457-X
		3.0 mm 900µm	501971-3 501971-3	— 502179-7	502667-X 503628-X	

* Strain relief dash number indicates color - see page 21 for details.

ST Connectors — Epoxy Type (Continued)



Bend Limiting



Short



Right Angle



Bare Buffer

Strain Relief Bulk packages (100 pcs./package)

Color	Bend Limiting	Short	Right Angle	Bare Buffer	Short (2.0mm)
Black	502128-9	501457-8	502667-6	503628-2	503219-1
Red	1-502128-1	1-501457-0	502667-9	2-503628-4	503219-3
Blue	1-502128-3	1-501457-2	502667-7	503628-9	503219-5
Beige	1-502128-2	1-502457-2	—	2-503628-9	503219-4

ST Tooling and Accessories

Termination Kit: Includes all tools and accessories except adhesives

Description	Part Number
Termination kit for all ST epoxy connectors.	503746-1

Adhesives

Description	Approx. No. of Connectors	Part Number
Quick Cure Adhesive Tube (3 grams)	100	492508-1
Epoxy - (25) Bipax Pkgs	250	501195-4
Epoxy - (1) Tube	400	502418-1
Epoxy Applicator	—	501473-3

Crimp Tools

Description	Hand Tool with Die Set	Hand Tool Only	Die Set Only
Ceramic/Polymer Ferrules	58433-4	58532-1	58424-1
Stainless Steel Ferrules	58551-1	58532-1	58552-1

Miscellaneous Tools

Polishing Bushing	Part Number
Metal Bushing, Ceramic & Stainless Steel Ferrules	503337-1
Polymer Bushing-Black, Ceramic & Stainless Steel Ferrules	503304-1
Polymer Bushing-Beige, Polymer Ferrule	503304-2
Curing Sleeve/Pieces	502259-1
Strip Card Kit	501818-1

Polishing Films: Package of (10) 8.5 x 11 in. Sheets
Each package will polish between 60 and 80 connectors

Description	Part Number
5 μm	228433-8
1 μm	228433-7
0.3 μm	228433-5

ST Connectors — Epoxy Type (Continued)

Product Facts

- Free-hanging or panel mount design

ST Coupling Receptacles



Alignment Sleeve Material	Packaging	Part Number
Polymer Composite Multimode	Single	501381-1
	Bulk (1000)	501381-2
Metal Multimode	Single	504021-1
	Bulk (50)	504021-2
Zirconia Ceramic Singlemode	Single	502750-1
	Bulk (50)	502750-2

ST Polymer Duplex Receptacle

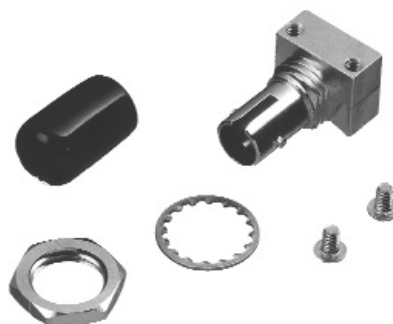


Alignment Sleeve	Color	Part Number
Metal/MM Only	Beige	504662-2
Metal/MM Only	Lt. Almond	504662-1

ST Active Device Mounts — Multimode

Product Facts

- Designed to accept multimode TO-18, TO-46 and TO-52 active devices
- Nickel plated, die cast zinc
- Mount to PCB or through panel
- Includes positioning ring



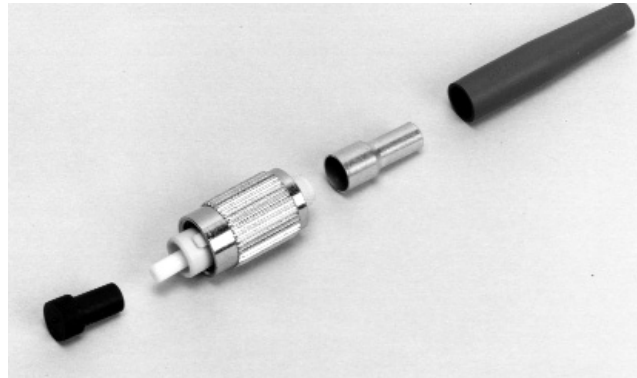
Description	Packaging	Style	Height	Part Number
Standard height	Single	A	.410	501474-1
Low profile	Single	B	.280	502585-2
Low profile	Single	C	.314	504022-2
Low profile	Bulk (50)	C	.314	504022-3

© Copyright 2004 by Tyco Electronics Corporation. All Rights Reserved. Dimensions are in millimeters with inches in brackets unless otherwise specified. Dimensions are shown for reference purposes only.

FC Connectors

Product Facts

- One-piece connector body:
 - Fastest assembly
- Compliant with:
 - JIS C-5970
- Pre-radiused ferrule



Singlemode FC Connector Kits - Polymer Crimp Body Performance Characteristics

Insertion Loss — <0.2 dB Typical
Return Loss — <-59 dB Typical
Durability — 200 Cycles

Singlemode FC Connector Kits - Polymer Crimp Body

Ferrule Type	Crimp Body Material	Jacket Size	Indiv. Pack w/Strain Relief	Bulk Pack w/Strain Relief	Crimp Tool	Instruction Sheet
Ceramic	Polymer	3.0 mm	504649-2	504649-8	503911-1	408-4213
Ceramic	Polymer	900µm	492052-3	492052-4	n/a	408-8674

GR-326 Style FC Connector Kits - Metal Crimp Body Singlemode Performance Characteristics

Insertion Loss — <0.2 dB Typical
Return Loss — <-59 dB Typical
Tested to GR-326
Tuning - 6 position

GR-326 Style Singlemode FC Connector Kits - Metal Crimp Body

Ferrule Type	Crimp Body Material	Jacket Size	Indiv. Pack w/Strain Relief	Bulk Pack w/Strain Relief	Crimp Tool	Instruction Sheet
Ceramic	Metal	3.0 mm	1457216-4	1457216-2	(1) 492131-1 (1) 58532-1	408-8674
Ceramic	Metal	2.4 mm	1754264-5	1754264-6	1588176-1	408-8674
Ceramic	Metal	1.6 - 2.0 mm	1754264-4	1754264-7	1588176-1	408-8674



FC Boots — Jacketed Cable

Description	GR-326 Style	Part Number				
		Color				
		Black	Yellow	Red	Beige	Blue
3.0 mm	No	1-503971-0	503971-7	1-503971-1	503971-1	503971-2
2.4 mm	No	1-503971-2	503971-8	1-503971-3	503971-3	503971-4
3.0 mm	Yes	1588491-3	1588491-4	—	1588491-5	1588491-2
1.6 mm - 2.4 mm	Yes	1588153-3	1588153-4	—	1588153-5	1588153-2

FC Boots — Angled

Description		Part Number				
		Color				
		Black	Yellow	Red	Beige	Blue
3.0 mm	Simplex	1-1278705-5	1-1278705-7	1-1278705-6	1-1278705-4	1-1278705-3

FC Boots — 900 micron

Description	Part Number				
	Color				
	Black	Yellow	Red	Beige	Blue
Long (33mm) 900µm	1457493-3	1457493-5	1457493-4	1457493-9	1457493-1
Short (10 mm) 900 µm	1278309-1	—	1278309-3	—	1278309-2

© Copyright 2004 by Tyco Electronics Corporation. All Rights Reserved. Dimensions are in millimeters with inches in brackets unless otherwise specified. Dimensions are shown for reference purposes only.

For drawings, technical data or samples, contact your Tyco Electronics sales engineer, call 1-800-522-6752, or visit our Website at: <http://www.tycoelectronics.com/fiberoptics>. Specifications subject to change. Consult Tyco Electronics for latest specifications.

FC Connectors (Continued)

FC Connector Component Selection Chart (bulk packaged)

Fiber Type	Simplex Connector Sub-Assembly	Cable Size	Crimp Eyelet w/ Heat Shrink	Crimp Eyelet	Strain Relief Part Number*
Singlemode - GR-326 Style	1374775-3	1.6-2.0 mm 2.4 mm	1374150-1 1588189-1	— —	1588153-X 1588153-X
	492541-4	3.0 mm	—	504973-3	1588491-X
Singlemode - Polymer Crimp Body	504650-3	2.4 mm 3.0 mm	— —	503970-6 503970-3	503971-X 503971-X
		900 μm	—	—	1457493-X (long) 1278309-X (short)
	1374778-2	1.6-2.0 mm 2.4 mm	1374150-1 1588189-1	— —	1588153-X 1588153-X
Multimode - Ceramic Ferrule	503922-3	3.0 mm	—	503970-3	503971-2
		900 μm	—	—	1457493-9 (long) 1278309-1 (short)

* Strain relief dash number indicates color - see page 23 for details.

FC Adapters



FC Square Flange Adapter

FC Simplex Square Flange Adapter - Metal

Alignment Sleeve Material	Panel Cut-out	Keyway Slot (Nom.)	Part Numbers	
			Single Pkg.	50 pc. Bulk Pkg.
Metal	Square Flange	Std. 2.33 mm	501506-2	501506-4
Ceramic	Square Flange	Std. 2.33 mm	501506-1	501506-3



FC 8mm/9mm Dia. Round

FC Simplex 8mm/9mm Dia. Round (D-Hole) Adapter - Metal

Alignment Sleeve Material	Panel Cut-out	Keyway Slot (Nom.)	Part Numbers	
			Single Pkg.	50 pc. Bulk Pkg.
Metal (Copper)	D-Hole	Std. 2.33 mm	504407-1	504407-2
Ceramic	D-Hole	Std. 2.33 mm	504407-3	504407-4
Ceramic/APC	D-Hole	2.05 mm Type R	504407-8	504407-9
Ceramic/APC	D-Hole	Prec. 2.02 mm	504407-7	504407-6



FC 8mm Dia. Round (Double D)

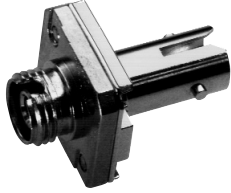
FC Simplex 8mm Dia. Round (Double D-Hole) Adapter - Metal

Alignment Sleeve Material	Panel Cut-out	Keyway Slot (Nom.)	Part Numbers
			Single Pkg.
Metal	Double D-Hole	Std. 2.33mm	504013-1

© Copyright 2004 by Tyco Electronics Corporation. All Rights Reserved. Dimensions are in millimeters with inches in brackets unless otherwise specified. Dimensions are shown for reference purposes only.

FC Connectors (Continued)

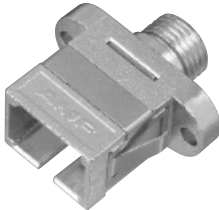
Hybrid Adapters - SC/FC/ST



FC to ST Simplex Adapter - Metal

Hybrid FC to ST Simplex Adapter - Metal

Alignment Sleeve Material	Housing Color	Part Numbers	
		Single Pkg.	
Metal	Electroless Nickel	503640-1	
Ceramic	Electroless Nickel	503640-2	



SC to FC Simplex Adapter - Metal

SC to FC Simplex Adapter - Metal

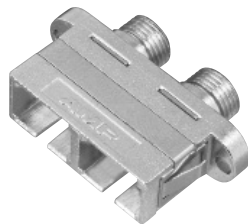
Alignment Sleeve Material	Housing Color	Part Numbers	
		Single Pkg.	50 pc. Bulk Pkg.
Metal	Electroless Nickel	1278349-1	1278349-2
Ceramic	Electroless Nickel	1278349-3	1278349-4



Flange-less SC to FC Simplex Adapter - Metal

Flange-less Simplex Adapter - Metal

Alignment Sleeve Material	Housing Color	Part Numbers	
		Single Pkg.	50 pc. Bulk Pkg.
Metal	Electroless Nickel	1278349-5	1278349-6
Ceramic	Electroless Nickel	1278349-7	1278349-8



SC to FC Duplex Adapter - Metal

SC to FC Duplex Adapter - Metal

Alignment Sleeve Material	Housing Color	Part Numbers	
		Single Pkg.	50 pc. Bulk Pkg.
Metal	Electroless Nickel	1278050-1	1278050-2
Ceramic	Electroless Nickel	1278050-3	1278050-4