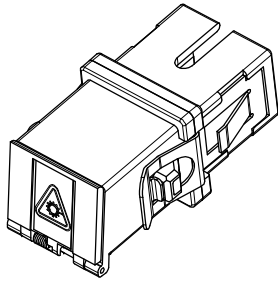
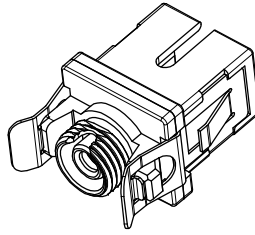


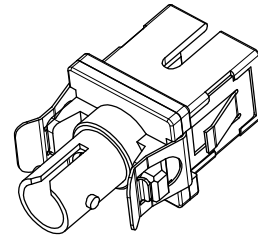
SHOWN WITH DUST CAP  
INSTALLED (NO MODULE)



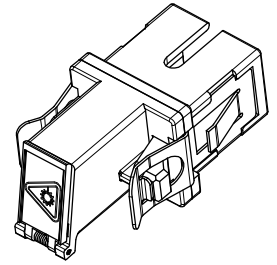
SC-SC VERSIONS  
SEE SHEET 3



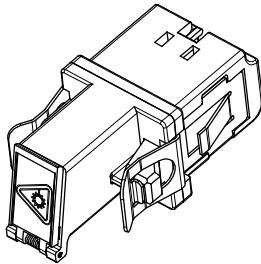
SC-FC VERSIONS  
SEE SHEET 4



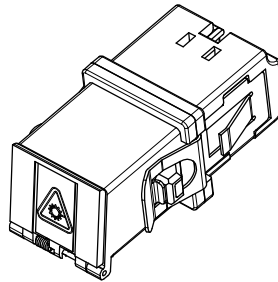
SC-ST VERSIONS  
SEE SHEET 5



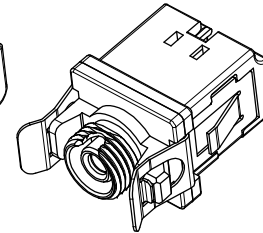
SC-LC VERSION  
SEE SHEET 6



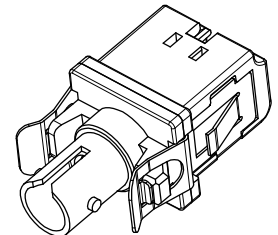
LC-LC VERSIONS  
SEE SHEET 7



LC-SC VERSION  
SEE SHEET 8



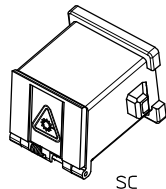
LC-FC VERSION  
SEE SHEET 9



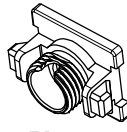
LC-ST VERSION  
SEE SHEET 10

| ENTER DESCRIPTION<br>EC NO: MF-2008-0308<br>DRAWN: PEVZNER<br>CHKD: 2008/02/07<br>APPR: GUMIN 2008/02/14<br>A3 | QUALITY SYMBOLS<br>▽=0<br>▽=0                              | GENERAL TOLERANCES (UNLESS SPECIFIED)   |                    | DIMENSION STYLE<br>MM/IN   | SCALE<br>2.5:1                | DESIGN UNITS<br>METRIC | THIRD ANGLE PROJECTION |       |          |       |       |          |       |       |         |       |       |               |  |  |                               |                    |                            |  |  |
|--|--|---|--------------------|----------------------------|-------------------------------|------------------------|------------------------|-------|----------|-------|-------|----------|-------|-------|---------|-------|-------|---------------|--|--|-------------------------------|--------------------|----------------------------|--|--|
|  |  | <table border="1"> <tr> <th></th> <th>mm</th> <th>INCH</th> </tr> <tr> <td>4 PLACES</td> <td>± ---</td> <td>± ---</td> </tr> <tr> <td>3 PLACES</td> <td>± ---</td> <td>± ---</td> </tr> <tr> <td>2 PLACES</td> <td>± ---</td> <td>± ---</td> </tr> <tr> <td>1 PLACE</td> <td>± ---</td> <td>± ---</td> </tr> <tr> <td colspan="3">ANGULAR ± 1 °</td> </tr> </table> |                    | mm                         | INCH                          | 4 PLACES               | ± ---                  | ± --- | 3 PLACES | ± --- | ± --- | 2 PLACES | ± --- | ± --- | 1 PLACE | ± --- | ± --- | ANGULAR ± 1 ° |  |  | DRAWN BY<br>SERNST 2006/02/13 | DATE<br>2006/02/13 | TITLE<br>UNIVERSAL ADAPTER |  |  |
|  |  | mm  | INCH               |                            |                               |                        |                        |       |          |       |       |          |       |       |         |       |       |               |  |  |                               |                    |                            |  |  |
|  | 4 PLACES   | ± ---   | ± ---              |                            |                               |                        |                        |       |          |       |       |          |       |       |         |       |       |               |  |  |                               |                    |                            |  |  |
| 3 PLACES   | ± ---  | ± ---   |                    |                            |                               |                        |                        |       |          |       |       |          |       |       |         |       |       |               |  |  |                               |                    |                            |  |  |
| 2 PLACES   | ± ---  | ± ---   |                    |                            |                               |                        |                        |       |          |       |       |          |       |       |         |       |       |               |  |  |                               |                    |                            |  |  |
| 1 PLACE  | ± ---  | ± ---   |                    |                            |                               |                        |                        |       |          |       |       |          |       |       |         |       |       |               |  |  |                               |                    |                            |  |  |
| ANGULAR ± 1 °  |  |   |                    |                            |                               |                        |                        |       |          |       |       |          |       |       |         |       |       |               |  |  |                               |                    |                            |  |  |
|  | DRAFT WHERE APPLICABLE<br>MUST REMAIN<br>WITHIN DIMENSIONS | CHECKED BY<br>DSZILAGYI 2006/03/07  | DATE<br>2006/03/07 | MOLEX INCORPORATED         |                               |                        |                        |       |          |       |       |          |       |       |         |       |       |               |  |  |                               |                    |                            |  |  |
|  |  | APPROVED BY<br>SMIGO 2006/03/07   | DATE<br>2006/03/07 | MATERIAL NO.<br>SEE TABLES | DOCUMENT NO.<br>SD-106154-002 | SHEET NO.<br>1 OF 10   |                        |       |          |       |       |          |       |       |         |       |       |               |  |  |                               |                    |                            |  |  |

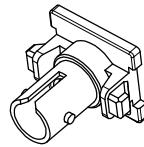
| MODULE P/N | TYPE | COLOR |
|------------|------|-------|
| 1061540020 | SC   | BLUE  |
| 1061540022 |      | BEIGE |
| 1061540025 |      | GREEN |
| 1061540031 | FC   | BLUE  |
| 1061540033 |      | BEIGE |
| 1061540036 |      | GREEN |
| 1061540041 | ST   | BLUE  |
| 1061540043 |      | BEIGE |
| 1061540130 | LC   | BLUE  |
| 1061540131 |      | BEIGE |
| 1061540132 |      | GREEN |



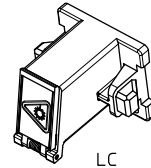
SC



FC

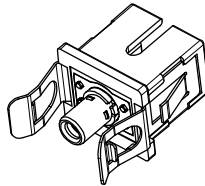


ST

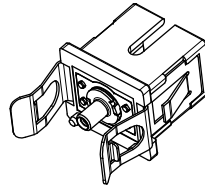


LC

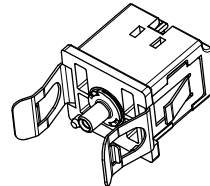
| BASE P/N   | TYPE        | SLEEVE MAT'L | TYPE              |
|------------|-------------|--------------|-------------------|
| 1061540015 | SINGLE MODE | ZIRCONIA     | SC BASE TO 2.5mm  |
| 1061540016 | MULTIMODE   | PHOS BRONZE  | SC BASE TO 1.25mm |
| 1061540017 | SM/MM       | NICKEL       | SC BASE TO 1.25mm |
| 1061540215 | SINGLE MODE | ZIRCONIA     | LC BASE TO 1.25mm |
| 1061540216 | MULTIMODE   | PHOS BRONZE  | LC BASE TO 1.25mm |
| 1061540217 | SM/MM       | NICKEL       | LC BASE TO 2.5mm  |



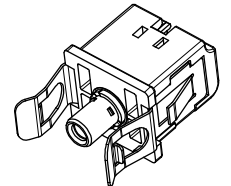
SC TO 2.5mm



SC TO 1.25mm



LC TO 1.25mm



LC TO 2.5mm

| SLEEVE ASBY | TYPE        | SLEEVE MAT'L | TYPE                    |
|-------------|-------------|--------------|-------------------------|
| 1061540050  | SINGLE MODE | ZIRCONIA     | 2.5mm                   |
| 1061540051  | MULTIMODE   | PHOS BRONZE  | 1.25mm                  |
| 1061540052  | SINGLE MODE | ZIRCONIA     |                         |
| 1061540053  | MULTIMODE   | PHOS BRONZE  |                         |
| 1061540054  | SM/MM       | NICKEL       | HYBRID<br>1.25 TO 2.5mm |



2.5mm

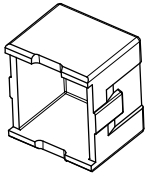


1.25mm



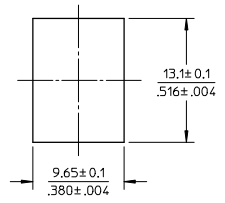
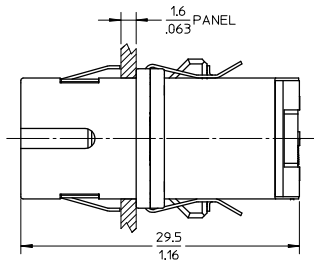
HYBRID

DUST CAP  
P/N 1061540006

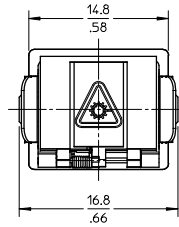
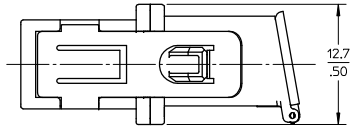


|   |                 |  |   |            |                   |                        |  |
|---|-----------------|--|---|------------|-------------------|------------------------|--|
| ENTER DESCRIPTION<br>EC NO: MF2008-0308<br>DRAWN BY: ZNER<br>CHKD: 2008/02/07<br>APPR: LGUMIN<br>2008/02/14<br>A3 | QUALITY SYMBOLS | GENERAL TOLERANCES (UNLESS SPECIFIED)<br>mm INCH<br>4 PLACES ± --- ± ---<br>3 PLACES ± --- ± ---<br>2 PLACES ± --- ± ---<br>1 PLACE ± --- ± ---<br>ANGULAR ± 1 ° | DIMENSION STYLE   | SCALE      | DESIGN UNITS      | THIRD ANGLE PROJECTION |  |
|   | ▼=0<br>▽=0      |  | MM/IN   | 2:1        | METRIC            |                        |  |
|   |                 |  | DRAWN BY  | DATE       | TITLE             |                        |  |
|   |                 |  | SERNST  | 2006/02/13 | UNIVERSAL ADAPTER |                        |  |
|   | CHECKED BY      | DATE   | MATERIAL NO.  |            |                   |                        |  |
|   | DSZILAGYI       | 2006/03/07   | SEE TABLES  |            |                   |                        |  |
|   | APPROVED BY     | DATE   | DOCUMENT NO.  |            |                   |                        |  |
|   | SMIGO           | 2006/03/07   | SD-106154-002   |            |                   |                        |  |
|   |                 |  | SHEET NO.   |            |                   |                        |  |
|   |                 |  | 2 OF 10   |            |                   |                        |  |
|   |                 |  | THIS DRAWING CONTAINS INFORMATION THAT IS PROPRIETARY TO MOLEX INCORPORATED AND SHOULD NOT BE USED WITHOUT WRITTEN PERMISSION |            |                   |                        |  |

| ADAPTER P/N | STYLE     | TYPE        | SLEEVE MAT'L    | MODULE COLOR |
|-------------|-----------|-------------|-----------------|--------------|
| 1061541100  | SC-SC     | SINGLE MODE | ZIRCONIA        | BLUE         |
| 1061541105  | SC-SC/APC |             |                 | GREEN        |
| 1061541101  | SC-SC     | MULTIMODE   | PHOSPHOR BRONZE | BEIGE        |



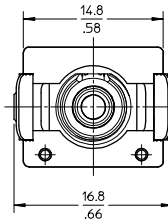
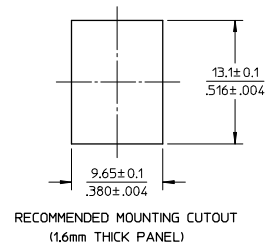
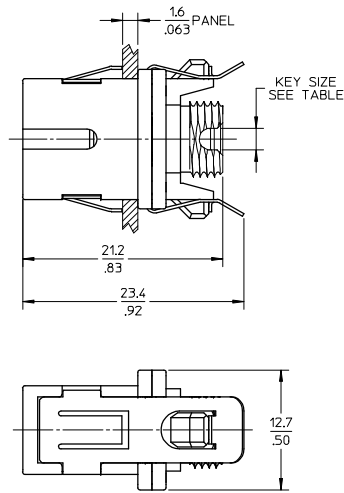
RECOMMENDED MOUNTING CUTOUT  
(1.6mm THICK PANEL)



- NOTES:
- ALL DIMENSIONS ARE FOR REFERENCE ONLY.
  - PACKAGING: ADAPTERS AND DUSTCAPS ARE PACKED IN A PLASTIC TRAY.

|   |  |  |   |       |  |   |
|---|--|--|---|-------|--|---|
| ENTER DESCRIPTION<br>EC NO: MF2008-0308<br>DRAWN BY: DRWAHPEVZNER<br>CHKD: 2008/02/07<br>APPR: LGUMIN 2008/02/14<br>REV: A3 | QUALITY SYMBOLS                                      | GENERAL TOLERANCES (UNLESS SPECIFIED)  | DIMENSION STYLE   | SCALE | DESIGN UNITS                                     | THIRD ANGLE PROJECTION  |
|   | ▽=0<br>▽=0   | mm    INCH<br>4 PLACES ± --- ± ---<br>3 PLACES ± --- ± ---<br>2 PLACES ± --- ± ---<br>1 PLACE ± --- ± ---<br>ANGULAR ± 1 ° | MM/IN   | 2.5:1 | METRIC   | DRAWN BY: SERNST    DATE: 2006/02/13<br>CHECKED BY: DSZILAGYI    DATE: 2006/03/07<br>APPROVED BY: SMIGO    DATE: 2006/03/07 |
|   | DRAFT WHERE APPLICABLE MUST REMAIN WITHIN DIMENSIONS | SEE TABLE  | TITLE: UNIVERSAL ADAPTER  |       | MOLEX INCORPORATED<br>DOCUMENT NO. SD-106154-002 |   |
|   |  | SIZE B   | THIS DRAWING CONTAINS INFORMATION THAT IS PROPRIETARY TO MOLEX INCORPORATED AND SHOULD NOT BE USED WITHOUT WRITTEN PERMISSION |       | SHEET NO. 3 OF 10                                |   |

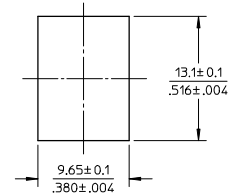
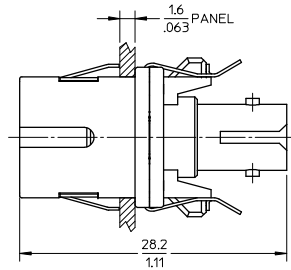
| ADAPTER P/N | STYLE     | TYPE        | SLEEVE MAT'L    | MODULE COLOR | KEY SIZE (mm) |
|-------------|-----------|-------------|-----------------|--------------|---------------|
| 1061541110  | SC-FC     | SINGLE MODE | ZIRCONIA        | BLUE         | 2.3           |
| 1061541115  | SC-FC/APC |             |                 | GREEN        | 2             |
| 1061541111  | SC-FC     | MULTIMODE   | PHOSPHOR BRONZE | BEIGE        | 2.3           |



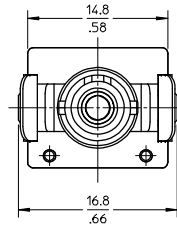
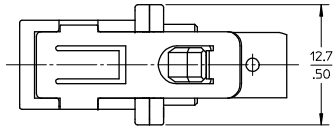
- NOTES:  
1. ALL DIMENSIONS ARE FOR REFERENCE ONLY.  
2. PACKAGING: ADAPTERS AND DUSTCAPS ARE PACKED IN A PLASTIC TRAY.

|  |  |   |   |                            |                               |                        |                        |
|--|--|---|---|----------------------------|-------------------------------|------------------------|------------------------|
| ENTER DESCRIPTION<br>EC NO: MF2008-0308<br>DRAWN BY: DRW:WPEIZNER<br>CHKD: 2008/02/07<br>APPR: LGUMIN 2008/02/14 | QUALITY SYMBOLS<br>▽=0<br>▽=0                        | GENERAL TOLERANCES (UNLESS SPECIFIED)   |   | DIMENSION STYLE<br>MM/IN   | SCALE<br>2.5:1                | DESIGN UNITS<br>METRIC | THIRD ANGLE PROJECTION |
|  |  | 4 PLACES ± --- ± ---<br>3 PLACES ± --- ± ---<br>2 PLACES ± --- ± ---<br>1 PLACE ± --- ± --- | DRAWN BY: SERNST<br>DATE: 2006/02/13<br>CHECKED BY: DSZILAGYI<br>DATE: 2006/03/07<br>APPROVED BY: SMIGO<br>DATE: 2006/03/07 | TITLE<br>UNIVERSAL ADAPTER |                               |                        |                        |
| A3   | DRAFT WHERE APPLICABLE MUST REMAIN WITHIN DIMENSIONS | MATERIAL NO.<br>SEE TABLE   | MOLEX INCORPORATED  |                            | DOCUMENT NO.<br>SD-106154-002 | SHEET NO.<br>4 OF 10   |                        |

| ADAPTER P/N | STYLE | TYPE        | SLEEVE MAT'L |
|-------------|-------|-------------|--------------|
| 1061541120  | SC-ST | SINGLE MODE | ZIRCONIA     |
| 1061541121  |       | MULTIMODE   | PHOS BRONZE  |



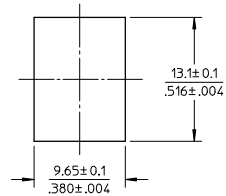
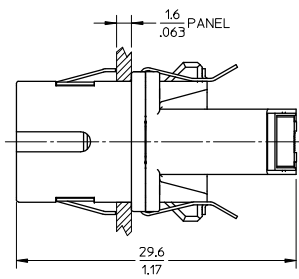
RECOMMENDED MOUNTING CUTOUT  
(1.6mm THICK PANEL)



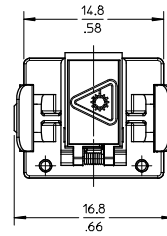
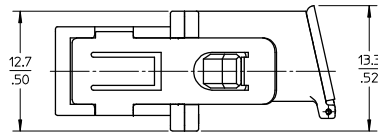
- NOTES:  
 1. ALL DIMENSIONS ARE FOR REFERENCE ONLY.  
 2. PACKAGING: ADAPTERS AND DUSTCAPS ARE PACKED IN A PLASTIC TRAY.

|  |                               |                                       |   |   |                           |                               |                         |                        |                            |
|--|-------------------------------|---------------------------------------|---|---|---------------------------|-------------------------------|-------------------------|------------------------|----------------------------|
| ENTER DESCRIPTION<br>EC NO: MF2008-0308<br>DRAWN BY: DRWAHPELZNER<br>CHKD: 2008/02/07<br>APPR: LGUMIN 2008/02/14 | QUALITY SYMBOLS<br>▽=0<br>▽=0 | GENERAL TOLERANCES (UNLESS SPECIFIED) |   | DIMENSION STYLE<br>MM/IN  |                           | SCALE<br>2.5:1                | DESIGN UNITS<br>METRIC  | THIRD ANGLE PROJECTION |                            |
|  |                               | 4 PLACES                              | ± | ---   | ±                         | ---                           | DRAWN BY<br>SERNST      | DATE<br>2006/02/13     | TITLE<br>UNIVERSAL ADAPTER |
|  |                               | 3 PLACES                              | ± | ---   | ±                         | ---                           | CHECKED BY<br>DSZILAGYI | DATE<br>2006/03/07     |                            |
|  |                               | 2 PLACES                              | ± | ---   | ±                         | ---                           | APPROVED BY<br>SMIGO    | DATE<br>2006/03/07     |                            |
| 1 PLACE  | ±                             | ---                                   | ± | ---   | MATERIAL NO.<br>SEE TABLE | DOCUMENT NO.<br>SD-106154-002 |                         |                        |                            |
| DRAFT WHERE APPLICABLE MUST REMAIN WITHIN DIMENSIONS   |                               | ANGULAR ± 1 °                         |   | THIS DRAWING CONTAINS INFORMATION THAT IS PROPRIETARY TO MOLEX INCORPORATED AND SHOULD NOT BE USED WITHOUT WRITTEN PERMISSION |                           | MOLEX INCORPORATED            |                         | SHEET NO.<br>5 OF 10   |                            |

| ADAPTER P/N | STYLE | TYPE     | SLEEVE MAT'L |
|-------------|-------|----------|--------------|
| 1061541130  | SC-LC | SM OR MM | NICKEL       |



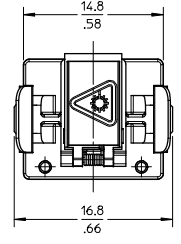
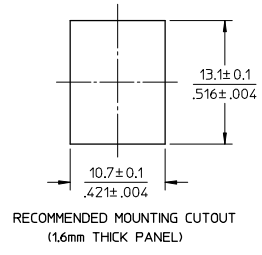
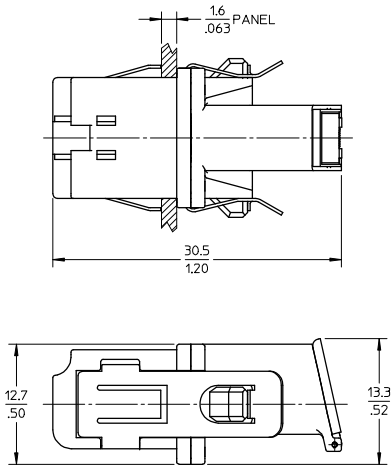
RECOMMENDED MOUNTING CUTOUT  
(1.6mm THICK PANEL)



- NOTES:  
 1. ALL DIMENSIONS ARE FOR REFERENCE ONLY.  
 2. PACKAGING: ADAPTERS AND DUSTCAPS ARE PACKED IN A PLASTIC TRAY.

|   |                 |  |                 |               |                   |                        |  |
|---|-----------------|--|-----------------|---------------|-------------------|------------------------|--|
| ENTER DESCRIPTION<br>EC NO: MF2008-0308<br>DRAWN BY: DRW/HAPELVZNER<br>CHKD: 2008/02/07<br>APPR: LGUMIN 2008/02/14<br>REV: A3 | QUALITY SYMBOLS | GENERAL TOLERANCES (UNLESS SPECIFIED)<br>mm INCH<br>4 PLACES ± --- ± ---<br>3 PLACES ± --- ± ---<br>2 PLACES ± --- ± ---<br>1 PLACE ± --- ± ---<br>ANGULAR ± 1 ° | DIMENSION STYLE | SCALE         | DESIGN UNITS      | THIRD ANGLE PROJECTION |  |
|   | ▽=0<br>▽=0      |  | MM/IN           | 2.5:1         | METRIC            |                        |  |
|   |                 |  | DRAWN BY        | DATE          | TITLE             |                        |  |
|   |                 |  | SERNST          | 2006/02/13    | UNIVERSAL ADAPTER |                        |  |
|   |                 | CHECKED BY   | DATE            | MATERIAL NO.  |                   |                        |  |
|   |                 | DSZILAGYI  | 2006/03/07      | SMIGO         |                   |                        |  |
|   |                 | APPROVED BY  | DATE            | DOCUMENT NO.  |                   |                        |  |
|   |                 |  | 2006/03/07      | SD-106154-002 |                   |                        |  |
|   |                 | DRAFT WHERE APPLICABLE MUST REMAIN WITHIN DIMENSIONS   |                 | SIZE          | SHEET NO.         |                        |  |
|   |                 |  |                 | B             | 6 OF 10           |                        |  |
|   |                 | THIS DRAWING CONTAINS INFORMATION THAT IS PROPRIETARY TO MOLEX INCORPORATED AND SHOULD NOT BE USED WITHOUT WRITTEN PERMISSION                                    |                 |               |                   |                        |  |

| ADAPTER P/N | STYLE     | TYPE        | SLEEVE MAT'L    | MODULE COLOR |
|-------------|-----------|-------------|-----------------|--------------|
| 1061541630  | LC-LC     | SINGLE MODE | ZIRCONIA        | BLUE         |
| 1061541635  | LC-LC/APC |             |                 | GREEN        |
| 1061541631  | LC-LC     | MULTIMODE   | PHOSPHOR BRONZE | BEIGE        |



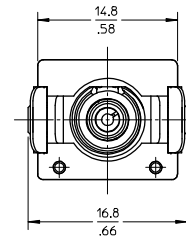
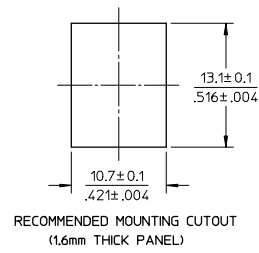
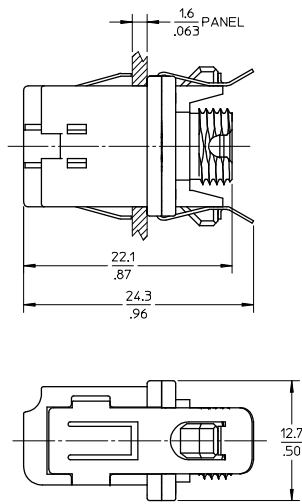
NOTES:  
1. ALL DIMENSIONS ARE FOR REFERENCE ONLY.  
2. PACKAGING: ADAPTERS AND DUSTCAPS ARE PACKED IN A PLASTIC TRAY.

|   |                 |  |                 |            |                   |                        |  |
|---|-----------------|--|-----------------|------------|-------------------|------------------------|--|
| ENTER DESCRIPTION<br>EC NO: MF2008-0308<br>DRAWN: PEVZNER<br>CHKD: 2008/02/07<br>APPR: LGUMIN<br>2008/02/14<br>REV<br>A3      | QUALITY SYMBOLS | GENERAL TOLERANCES (UNLESS SPECIFIED)<br>mm INCH<br>4 PLACES ± --- ± ---<br>3 PLACES ± --- ± ---<br>2 PLACES ± --- ± ---<br>1 PLACE ± --- ± ---<br>ANGULAR ± 1 °<br>DRAFT WHERE APPLICABLE MUST REMAIN WITHIN DIMENSIONS | DIMENSION STYLE | SCALE      | DESIGN UNITS      | THIRD ANGLE PROJECTION |  |
|   | ▽=0<br>▽=0      |  | MM/IN           | 2.5:1      | METRIC            |                        |  |
|   |                 |  | DRAWN BY        | DATE       | TITLE             |                        |  |
|   |                 |  | SERNST          | 2006/02/13 | UNIVERSAL ADAPTER |                        |  |
|   | CHECKED BY      | DATE   | MATERIAL NO.    |            |                   |                        |  |
|   | DSZILAGYI       | 2006/03/07   | SEE TABLE       |            |                   |                        |  |
|   | APPROVED BY     | DATE   | DOCUMENT NO.    |            |                   |                        |  |
|   | SMIGO           | 2006/03/07   | SD-106154-002   |            |                   |                        |  |
|   |                 |  | SHEET NO.       |            |                   |                        |  |
|   |                 |  | 7 OF 10         |            |                   |                        |  |
| THIS DRAWING CONTAINS INFORMATION THAT IS PROPRIETARY TO MOLEX INCORPORATED AND SHOULD NOT BE USED WITHOUT WRITTEN PERMISSION |                 |  |                 |            |                   |                        |  |





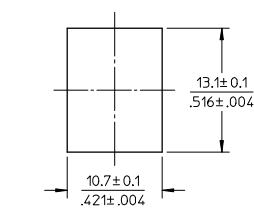
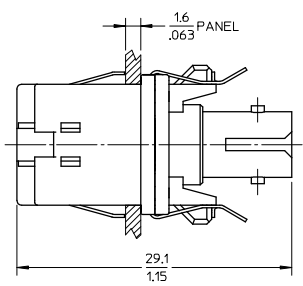
| ADAPTER P/N | STYLE | TYPE     | SLEEVE MAT'L |
|-------------|-------|----------|--------------|
| 1061541610  | LC-FC | SM OR MM | NICKEL       |



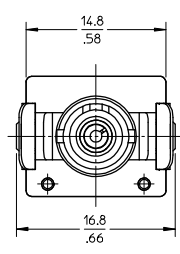
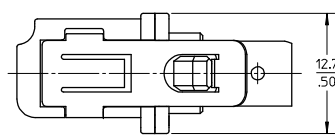
NOTES:  
 1. ALL DIMENSIONS ARE FOR REFERENCE ONLY.  
 2. PACKAGING: ADAPTERS AND DUSTCAPS ARE PACKED IN A PLASTIC TRAY.

|   |                 |  |                 |       |              |   |   |
|---|-----------------|--|-----------------|-------|--------------|---|---|
| ENTER DESCRIPTION<br>EC NO: MF2008-0308<br>DRAWN BY: DRWAHPEVZNER<br>CHKD: 2008/02/07<br>APPR: LGUMIN 2008/02/14<br>REV: A3 | QUALITY SYMBOLS | GENERAL TOLERANCES (UNLESS SPECIFIED)<br>mm INCH<br>4 PLACES ± --- ± ---<br>3 PLACES ± --- ± ---<br>2 PLACES ± --- ± ---<br>1 PLACE ± --- ± ---<br>ANGULAR ± 1 °<br>DRAFT WHERE APPLICABLE MUST REMAIN WITHIN DIMENSIONS | DIMENSION STYLE | SCALE | DESIGN UNITS | THIRD ANGLE PROJECTION  |   |
|   | ▽=0<br>▽=0      |  | MM/IN           | 2.5:1 | METRIC       | DRAWN BY: SERNST<br>DATE: 2006/02/13<br>CHECKED BY: DSZILAGYI<br>DATE: 2006/03/07<br>APPROVED BY: SMIGO<br>DATE: 2006/03/07 | TITLE   |
|   |                 |  |                 |       |              |   | UNIVERSAL ADAPTER   |
|   |                 |  |                 |       |              |   | Molex MOLEX INCORPORATED<br>MATERIAL NO. SEE TABLE<br>DOCUMENT NO. SD-106154-002<br>SHEET NO. 9 OF 10 |

|             |       |          |              |
|-------------|-------|----------|--------------|
| ADAPTER P/N | STYLE | TYPE     | SLEEVE MAT'L |
| 1061541620  | LC-ST | SM OR MM | NICKEL       |



RECOMMENDED MOUNTING CUTOUT  
(1.6mm THICK PANEL)



- NOTES:  
1. ALL DIMENSIONS ARE FOR REFERENCE ONLY.  
2. PACKAGING: ADAPTERS AND DUSTCAPS ARE PACKED IN A PLASTIC TRAY.

|   |                 |  |                 |   |                   |                        |  |
|---|-----------------|--|-----------------|---|-------------------|------------------------|--|
| ENTER DESCRIPTION<br>EC NO: MF2008-0308<br>DRAWN BY: DRWAHPEVZNER<br>CHKD: 2008/02/07<br>APPR: LGUMIN 2008/02/14<br>REV: A3 | QUALITY SYMBOLS | GENERAL TOLERANCES (UNLESS SPECIFIED)<br>mm INCH<br>4 PLACES ± --- ± ---<br>3 PLACES ± --- ± ---<br>2 PLACES ± --- ± ---<br>1 PLACE ± --- ± ---<br>ANGULAR ± 1 ° | DIMENSION STYLE | SCALE   | DESIGN UNITS      | THIRD ANGLE PROJECTION |  |
|   | ▽=0<br>▽=0      |  | MM/IN           | 2.5:1   | METRIC            |                        |  |
|   |                 |  | DRAWN BY        | DATE  | TITLE             |                        |  |
|   |                 |  | SERNST          | 2006/02/13  | UNIVERSAL ADAPTER |                        |  |
|   |                 | CHECKED BY   | DATE            | MATERIAL NO.  |                   |                        |  |
|   |                 | DSZILAGYI  | 2006/03/07      | SD-106154-002   |                   |                        |  |
|   |                 | APPROVED BY  | DATE            | DOCUMENT NO.  |                   |                        |  |
|   |                 | SMIGO  | 2006/03/07      | SHEET NO.   |                   |                        |  |
|   |                 |  |                 | 10 OF 10  |                   |                        |  |
|   |                 | DRAFT WHERE APPLICABLE MUST REMAIN WITHIN DIMENSIONS   | SIZE            | THIS DRAWING CONTAINS INFORMATION THAT IS PROPRIETARY TO MOLEX INCORPORATED AND SHOULD NOT BE USED WITHOUT WRITTEN PERMISSION |                   |                        |  |
|   |                 |  | B               |   |                   |                        |  |