

4

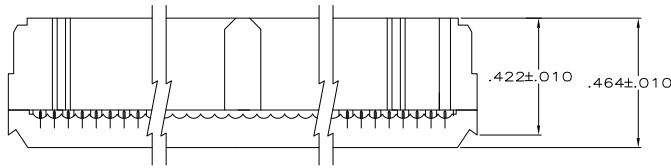
3

2

1

THIS DRAWING IS UNPUBLISHED. RELEASED FOR PUBLICATION. ALL RIGHTS RESERVED.

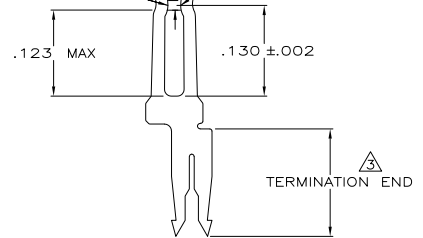
| LOC | | DIBT | | REVISIONS | | | | |
|-----|----|-------------|------|-----------|-----|---------------------------|---------|--------|
| P | LR | DESCRIPTION | DATE | BY | APD | | | |
| GP | 00 | | | B1 | | REVISED PER ECO-11-004835 | 11MAR11 | RK HMR |



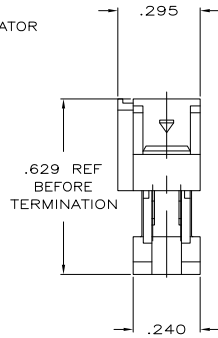
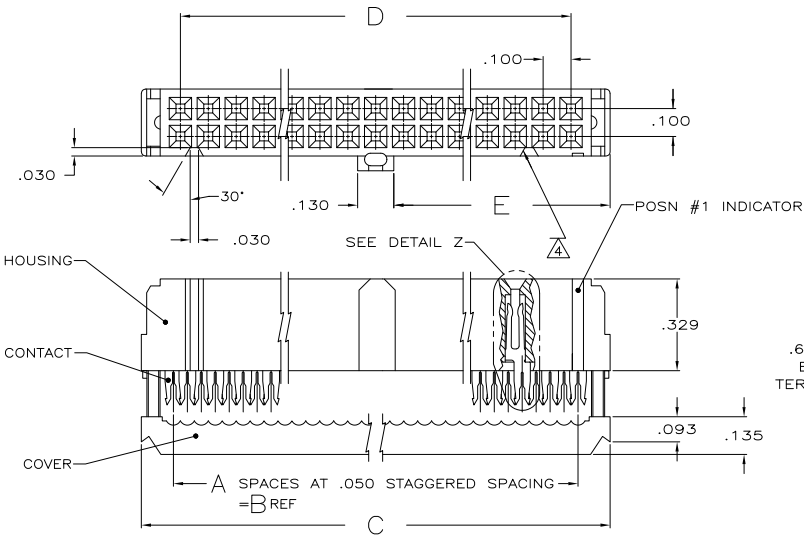
TERMINATED VIEW

- ⚠ MOLDDED PARTS: UL RATED 94V-0 THERMOPLASTIC, BLACK.
- ⚠ CONTACTS: PHOSPHOR BRONZE PER QQ-B-750.
- ⚠ CONTACTS: PLATED WITH .000030 MIN GOLD IN LOCALIZED GOLD PLATE AREA, .000050 MIN TIN ON TERMINATION END, ALL OVER .000050 MIN NICKEL ON ENTIRE CONTACT.
OR
GOLD FLASH OVER PALLADIUM-NICKEL PLATE .000030 MIN TOTAL IN LOCALIZED GOLD PLATE AREA, .000050 MIN TIN ON TERMINATION END, ALL OVER .000050 MIN NICKEL ON ENTIRE CONTACT.
- ⚠ POLARIZING FEATURE DOES NOT EXIST ON SAME END AS THE POSN #1 INDICATOR ON 10 AND 14 POSN PRODUCT.

LOCALIZED GOLD PLATING ON THIS SURFACE
 .014 MIN LOCALIZED GOLD PLATE AREA



DETAIL Z SCALE 10:1 TYPICAL



| | | | | | | |
|-------|-------|-------|-------|----|------------|-------------|
| 1.125 | 2.100 | 2.380 | 2.150 | 43 | 44 | 1-1658622-3 |
| 1.625 | 3.100 | 3.380 | 3.150 | 63 | 64 | 1-1658622-2 |
| 1.525 | 2.900 | 3.180 | 2.950 | 59 | 60 | 1-1658622-1 |
| 1.275 | 2.400 | 2.680 | 2.450 | 49 | 50 | 1-1658622-0 |
| 1.025 | 1.900 | 2.180 | 1.950 | 39 | 40 | 1658622-9 |
| .875 | 1.600 | 1.880 | 1.650 | 33 | 34 | 1658622-8 |
| .775 | 1.400 | 1.680 | 1.450 | 29 | 30 | 1658622-7 |
| .675 | 1.200 | 1.480 | 1.250 | 25 | 26 | 1658622-6 |
| .625 | 1.100 | 1.380 | 1.150 | 23 | 24 | 1658622-5 |
| .525 | .900 | 1.180 | .950 | 19 | 20 | 1658622-4 |
| .425 | .700 | .980 | .750 | 15 | 16 | 1658622-3 |
| .375 | .600 | .880 | .650 | 13 | 14 | 1658622-2 |
| .275 | .400 | .680 | .450 | 9 | 10 | 1658622-1 |
| E | D | C | B | A | NO OF POSN | PART NUMBER |

THIS DRAWING IS A CONTROLLED DOCUMENT.

| | | |
|---|---|--|
| DIMENSIONS: INCHES 0 PLC ± .010 1 PLC ± .005 2 PLC ± .005 3 PLC ± .005 4 PLC ± .005 ANGLES ± .5° FINISH SEE NOTES | THIS DRAWING IS A CONTROLLED DOCUMENT. DIM: R. SAMICK 22AUG03 CHK: C. RHODE 22AUG03 C: M. WALMSLEY 22AUG03 NAME: 108-40000 PRODUCT SPEC: 114-40005 APPLICATION SPEC: 114-40005 WEIGHT: - CUSTOMER DRAWING | TE Connectivity RECEPTACLE ASSY, CENTER & MILITARY POLARIZATION LEAD FREE AMP-LATCH™ NOVO SIZE: A2 CASE CODE (FOR WING 90): 00779 SCALE: 4:1 SHEET: 1 of 1 REV: B1 |
|---|---|--|