



RF Filters for Cellular Phones

Series/Type: B7752

The following products presented in this data sheet are being withdrawn.

Ordering Code	Substitute Product	Date of Withdrawal	Deadline Last Orders	Last Shipments
B39212B7752C910	B39212B9408K610	2007-09-21	2007-12-31	2008-03-31

For further information please contact your nearest EPCOS sales office, which will also support you in selecting a suitable substitute. The addresses of our worldwide sales network are presented at www.epcos.com/sales.



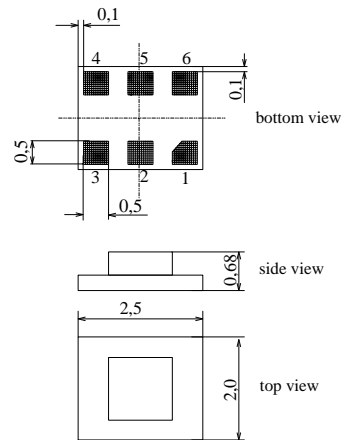
Chip Sized SAW Package DCS6K

Features

- Low-loss RF filter for mobile telephone W-CDMA system, receive path
- Low amplitude ripple
- Usable passband 60 MHz
- Unbalanced to balanced operation
- Impedance transformation from 50Ω to 200Ω
- Package for Surface Mounted Technology (SMT)
- Chip Sized SAW Package (CSSP)

Terminals

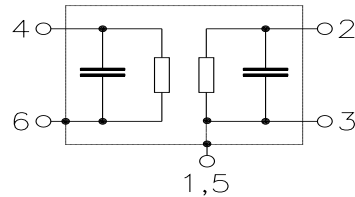
- Gold-plated Ni



Dimensions in mm, approx. weight 0,012 g

Pin configuration

- 2 Input, unbalanced
- 4, 6 Output, balanced
- 1, 3, 5 To be grounded



Type	Ordering code	Marking and Package according to	Packing according to
B7752	B39212-B7752-C910	C61157-A7-A97	F61074-V8153-Z000

Electrostatic Sensitive Device (ESD)

Maximum ratings

Operating temperature range	T	- 20/+ 85	°C	
Storage temperature range	T_{stg}	- 40/+ 85	°C	
DC voltage	V_{DC}	5	V	
ESD voltage	V_{ESD}	50	V	
Source power	P_S	10	dBm	



SAW Components

B7752

Low-Loss Filter for Mobile Communication

2140,0 MHz

Data Sheet



Characteristics

Operating temperature range: $T = +25^{\circ}\text{C}$
 Terminating source impedance: $Z_S = 50\ \Omega$
 Terminating load impedance: $Z_L = 200\ \Omega$ (balanced) || 12 nH

		min.	typ.	max.	
Center frequency	f_C	—	2140,0	—	MHz
Maximum insertion attenuation	α_{\max}	—	2,4	2,8	dB
	2110,0 ... 2170,0 MHz				
Amplitude ripple (p-p)	$\Delta\alpha$	—	0,8	1,2	dB
	2110,0 ... 2170,0 MHz				
Amplitude ripple per 5MHz channel (p-p)	$\Delta\alpha_{5\text{MHz}}$	—	0,3	0,5	dB
	2110,0 ... 2170,0 MHz				
Input VSWR		—	1,9	2,2	
	2110,0 ... 2170,0 MHz				
Output VSWR		—	1,9	2,2	
	2110,0 ... 2170,0 MHz				
Output amplitude balance (S_{31}/S_{21})		-1,0	0	1,0	dB
	2110,0 ... 2170,0 MHz				
Output phase balance ($\phi(S_{31}) - \phi(S_{21}) + 180^{\circ}$)		-10,0	0	10,0	degree
	2110,0 ... 2170,0 MHz				
Attenuation	α				
	180,0 ... 200,0 MHz	60	80	—	dB
	200,0 ... 1000,0 MHz	50	58	—	dB
	1000,0 ... 1880,0 MHz	35	40	—	dB
	1880,0 ... 1980,0 MHz	30	36	—	dB
	1980,0 ... 2050,0 MHz	24	28	—	dB
	2205,0 ... 2255,0 MHz	15	22	—	dB
	2255,0 ... 2300,0 MHz	20	27	—	dB
	2300,0 ... 2490,0 MHz	27	34	—	dB
	2490,0 ... 2550,0 MHz	35	40	—	dB
	2550,0 ... 3200,0 MHz	35	39	—	dB
	3200,0 ... 6000,0 MHz	40	54	—	dB



SAW Components

B7752

Low-Loss Filter for Mobile Communication

2140,0 MHz

Data Sheet



Characteristics

Operating temperature range: $T = -20$ to $+85$ °C
 Terminating source impedance: $Z_S = 50 \Omega$
 Terminating load impedance: $Z_L = 200 \Omega$ (balanced) || 12 nH

		min.	typ.	max.	
Center frequency	f_C	—	2140,0	—	MHz
Maximum insertion attenuation	α_{max}	—	2,8	3,2	dB
	2110,0 ... 2170,0 MHz				
Amplitude ripple (p-p)	$\Delta\alpha$	—	1,2	1,5	dB
	2110,0 ... 2170,0 MHz				
Amplitude ripple per 5MHz channel (p-p)	$\Delta\alpha_{5MHz}$	—	0,3	0,5	dB
	2110,0 ... 2170,0 MHz				
Input VSWR		—	2,0	2,2	
	2110,0 ... 2170,0 MHz				
Output VSWR		—	2,0	2,2	
	2110,0 ... 2170,0 MHz				
Output amplitude balance (S_{31}/S_{21})		-1,0	0	1,5	dB
	2110,0 ... 2170,0 MHz				
Output phase balance ($\phi(S_{31}) - \phi(S_{21}) + 180^\circ$)		-10,0	0	15,0	degree
	2110,0 ... 2170,0 MHz				
Attenuation	α				
	180,0 ... 200,0 MHz	60	80	—	dB
	200,0 ... 1000,0 MHz	50	58	—	dB
	1000,0 ... 1880,0 MHz	35	40	—	dB
	1880,0 ... 1980,0 MHz	30	36	—	dB
	1980,0 ... 2050,0 MHz	24	28	—	dB
	2205,0 ... 2255,0 MHz	15	21	—	dB
	2255,0 ... 2300,0 MHz	20	27	—	dB
	2300,0 ... 2490,0 MHz	27	34	—	dB
	2490,0 ... 2550,0 MHz	35	40	—	dB
	2550,0 ... 3200,0 MHz	35	39	—	dB
	3200,0 ... 6000,0 MHz	40	54	—	dB



SAW Components

B7752

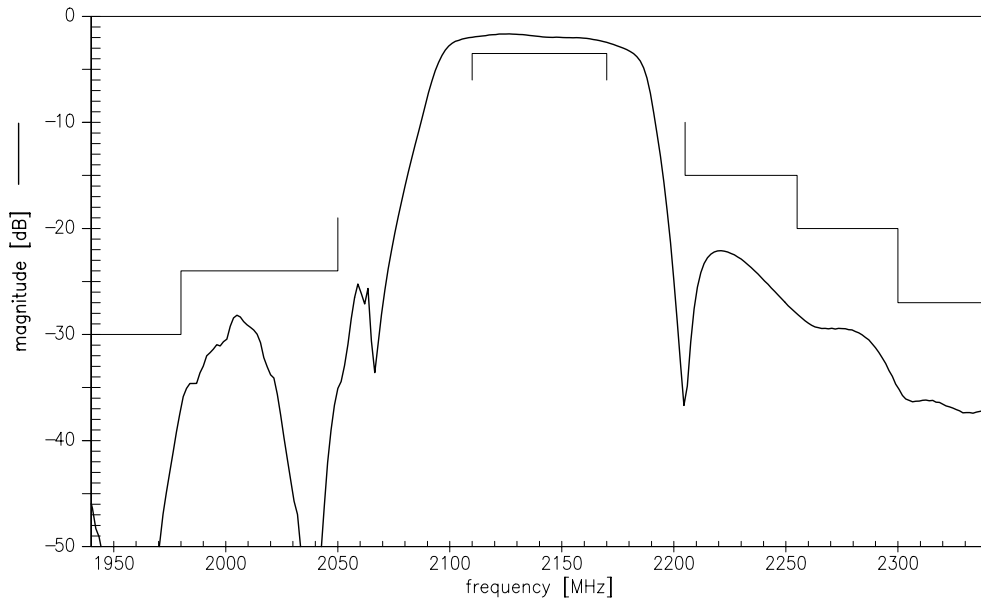
Low-Loss Filter for Mobile Communication

2140,0 MHz

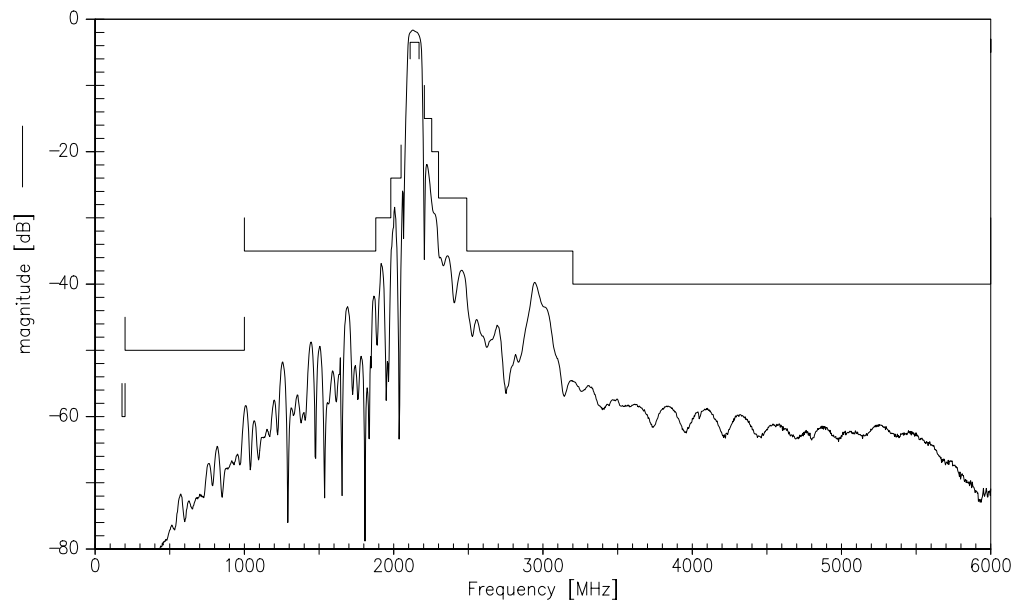
Data Sheet



Transfer function:

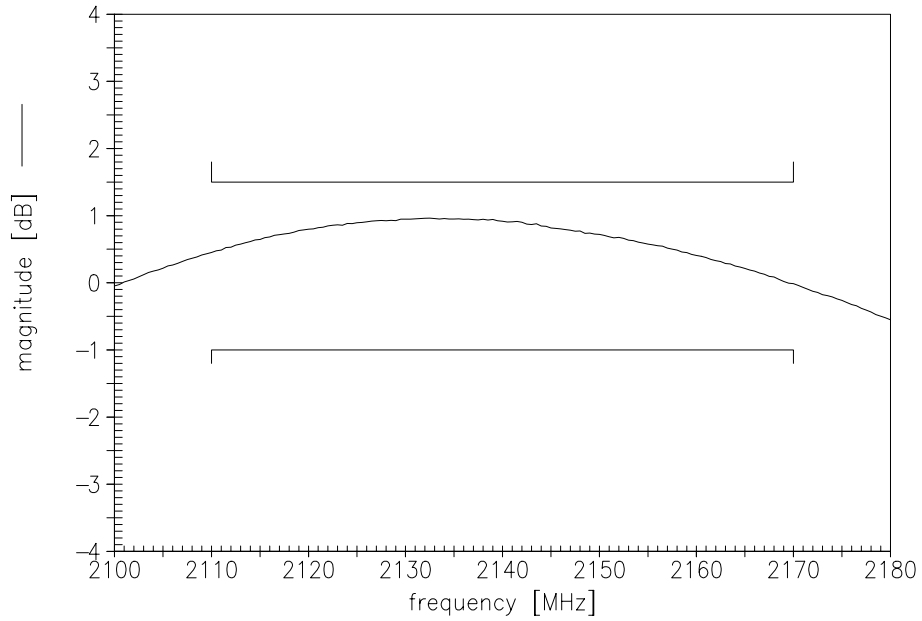


Transfer function (wide band) :

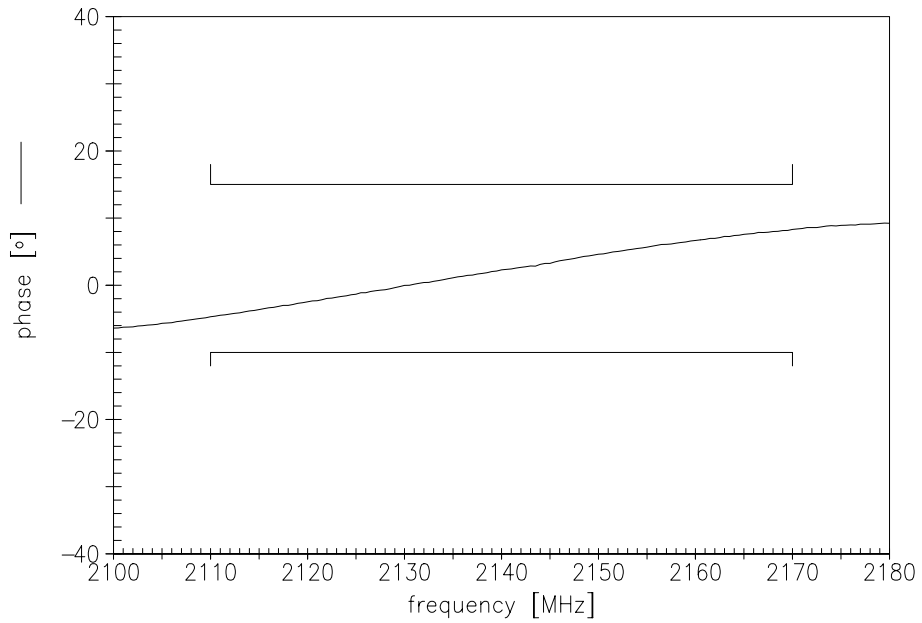




Output amplitude balance($|S_{31}/S_{21}|$):



Output phase balance($\phi(S_{31})-\phi(S_{21})+180^\circ$):





SAW Components

B7752

Low-Loss Filter for Mobile Communication

2140,0 MHz

Data Sheet



Published by EPCOS AG

Surface Acoustic Wave Components Division, SAW MC WT

P.O. Box 80 17 09, D-81617 München

© EPCOS AG 2003. Reproduction, publication and dissemination of this brochure and the information contained therein without EPCOS' prior express consent is prohibited.

Purchase orders are subject to the General Conditions for the Supply of Products and Services of the Electrical and Electronics Industry recommended by the ZVEI (German Electrical and Electronic Manufacturers' Association), unless otherwise agreed.

This brochure replaces the previous edition.

For questions on technology, prices and delivery please contact the Sales Offices of EPCOS AG or the international Representatives.

Due to technical requirements components may contain dangerous substances. For information on the type in question please also contact one of our Sales Offices.