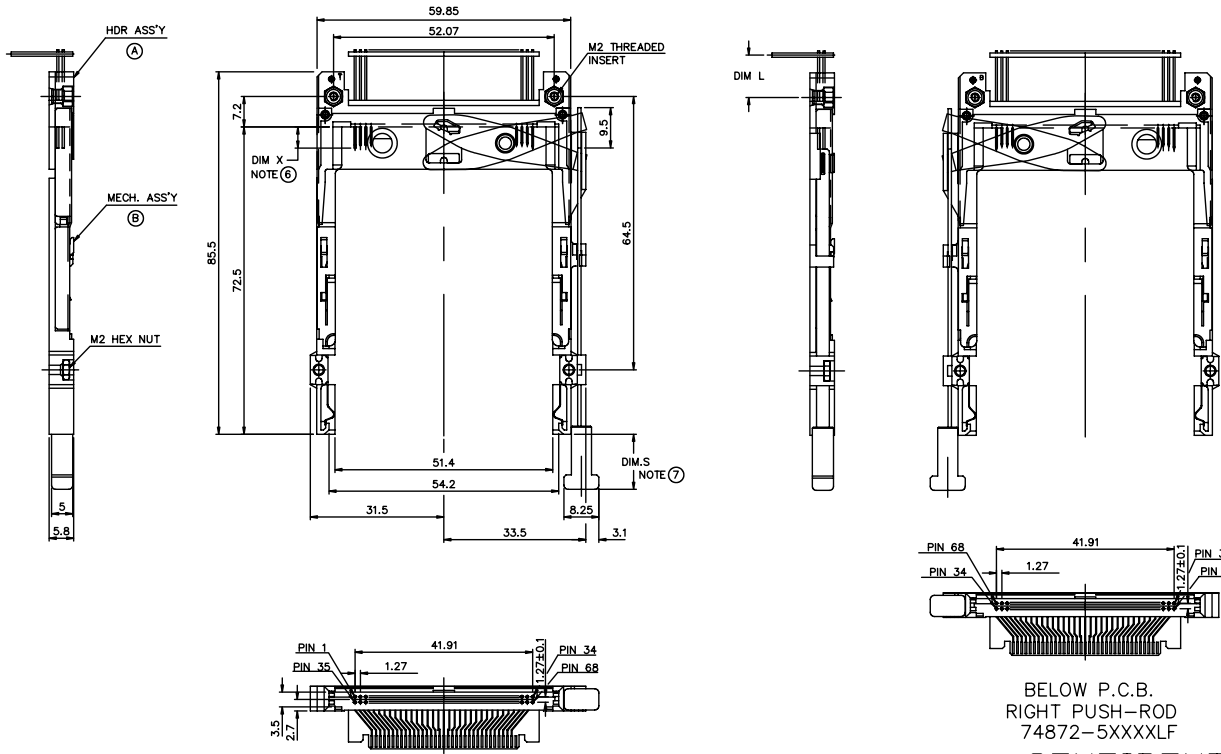


Tous droits strictement réservés. Reproduction ou communication à des tiers interdite sous quelque forme que ce soit sans autorisation écrite du propriétaire. Propriété de c FCI. Droits de reproduction FCI.

All rights strictly reserved. Reproduction or issue to third parties in any form whatever is not permitted without written authority from the proprietor. Property of FCI. Copyright FCI.

PRODUCT NUMBER	DESCRIPTION
74872-****/****LF	UPPER ASSEMBLY FOR DOUBLE-DECK APPLICATION-61125 DRAWING FOR SINGLE- DECK



ABOVE P.C.B.
RIGHT PUSH-ROD
74872-0XXXX
74872-0XXXXLF

BELOW P.C.B.
RIGHT PUSH-ROD
74872-5XXXXLF

CONFIDENTIAL

mat'l. code		tolerances unless otherwise specified		CUSTOMER COPY		Electronics www.fciconnect.com	
ltr	ecn no	dr	date	linear	.XX±.13	projection	title
A	V80717	RHG	4/22/98		.XX±.13		3.3V EJECTOR HEADER ASS'Y
B	V90963	CGC	4/26/99		.XXX±.051		68POS. SMT TYPE I II III
C	V91050	CGC	5/15/99	angles	0° ±2'		product family PCMCIA
D	V02245	RJR	10/30/00	dr	R.GRAPE 4/22/98	MM	size dwg no
E	N05-0198	WB	07/05/05	engr	D.BRANN 4/22/98	1/1	74872
				chr	D.BRANN 4/22/98		sheet
				appd	D.BRANN 4/22/98		1 of 5
sheet	revision	E	E	E	E		
index	sheet	1	2	3	4	5	

ACAD

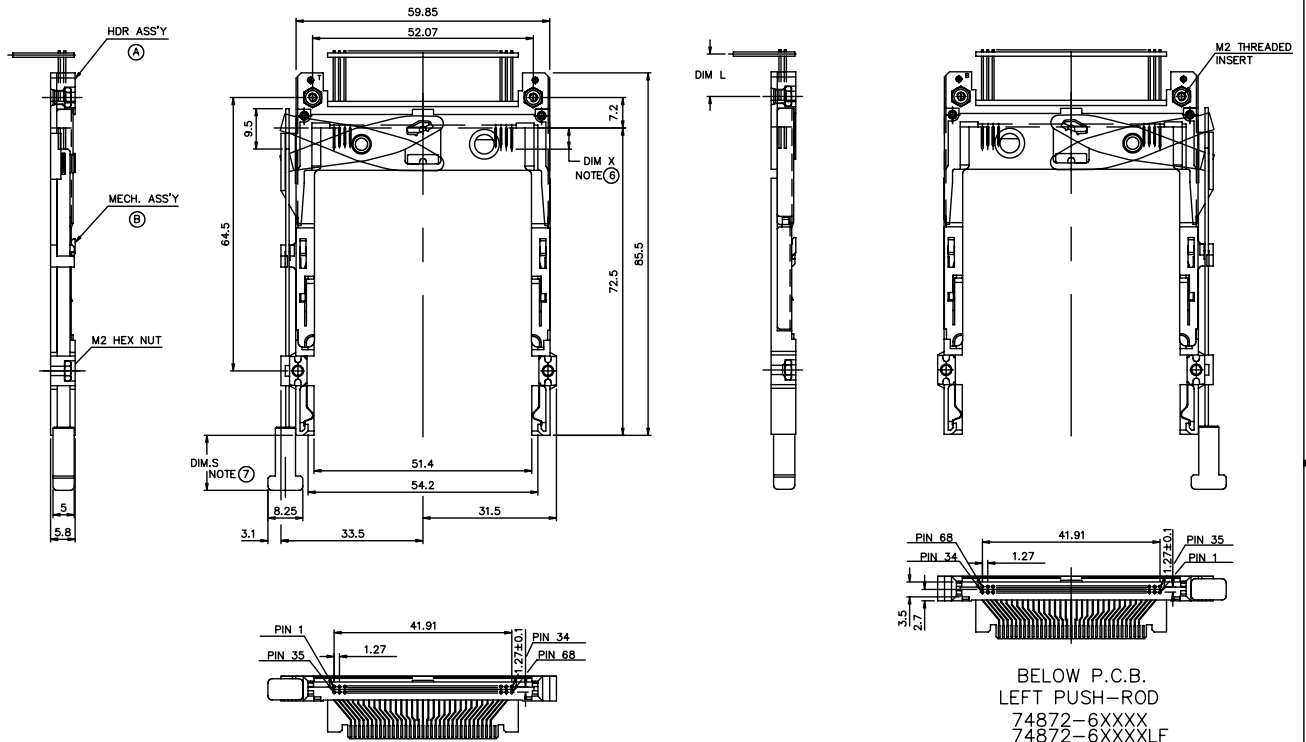
PDM: Rev:E

STATUS Released 26 Printed: Oct 12, 2010

Tous droits strictement réservés. Reproduction ou communication à des tiers interdite sous quelque forme que ce soit sans autorisation écrite du propriétaire. Propriété de c FCI. Droits de reproduction FCI.

All rights strictly reserved. Reproduction or issue to third parties in any form whatever is not permitted without written authority from the proprietor. Property of FCI. Copyright FCI.

PRODUCT NUMBER	DESCRIPTION
74872-****/****LF	UPPER ASSEMBLY FOR DOUBLE-DECK APPLICATION-61125 DRAWING FOR SINGLE- DECK



ABOVE P.C.B.
LEFT PUSH-ROD
74872-1XXXX
74872-1XXXXLF

BELOW P.C.B.
LEFT PUSH-ROD
74872-6XXXX
74872-6XXXXLF

CONFIDENTIAL

mat'l. code		tolerances unless otherwise specified		CUSTOMER COPY		Electronics www.fciconnect.com	
ltr	ecn no	dr	date	linear	projection	title	
E				.X±.3		3.3V EJECTOR HEADER ASS'Y	
				.XX±.13		68 POS. SMT I II III	
				.XXX±.051		product family	PCMCIA
				angles	0° ±2'	size	dwg no
				dr	R.GRAPE	4/22/98	A4
				engr	D.BRANN	4/22/98	
				chr	D.BRANN	4/22/98	
				appd	D.BRANN	4/22/98	
sheet index	revision sheet				scale	1/1	74872
							sheet 2 of

ACAD

PDM: Rev:E

STATUS Released cage code 26 Printed: Oct 12, 2010

Tous droits strictement réservés. Reproduction ou communication à des tiers interdite sous quelque forme que ce soit sans autorisation écrite du propriétaire. Propriété de c FCI. Droits de reproduction FCI.

All rights strictly reserved. Reproduction or issue to third parties in any form whatever is not permitted without written authority from the proprietor. Property of FCI. Copyright FCI.

PRODUCT NUMBER
74872-****

P.C.B. SIDE	PUSH ROD LOCATION	PRODUCT NO.	HDR & PWB ASS'Y	EJ ASS'Y	DIM L	
BELOW	LEFT	74872-655**	55977-5550	95627-00**	6.55	
		74872-645**	55977-5543	95627-00**	6.55	
		74872-625**	55977-5522	95627-00**	9.0	
		74872-605**	55977-5500	95627-00**	10.0	
	RIGHT	74872-555**	55977-5550	95627-10**	6.55	
		74872-545**	55977-5543	95627-10**	6.55	
		74872-525**	55977-5522	95627-10**	9.0	
		74872-505**	55977-5500	95627-10**	10.0	
	ABOVE	LEFT	74872-155**	55977-0550	95627-10**	6.55
			74872-145**	55977-0543	95627-10**	6.55
			74872-125**	55977-0522	95627-10**	9.0
		RIGHT	74872-105**	55977-0500	95627-10**	10.0
74872-250CA (10)			55977-0150	95627-05CA	-0.3	
74872-055**			55977-0550	95627-00**	6.55	
		74872-045**	55977-0543	95627-00**	6.55	
		74872-025**	55977-0522	95627-00**	9.0	
		74872-005**	55977-0500	95627-00**	10.0	

NOTES:

- 8mm MIN. CARD EJECT.
- EJECT TRAVEL: 9.5mm
- PUSH ROD LOCATION AND P.C.B. SIDE ARE AS APPEARS INSTALLED.
- MATERIAL
 - PART (A) (HEADER ASS'Y)
PLASTIC : HOUSING ...LCP UL94V-0
PIN : PHOSPHOR BRONZE
PCB : FR4
 - PART (B) (EJECT MECHANISM ASS'Y)
PLASTIC : GUIDE: POLYPHTHARAMID UL94V-0 BLACK
PUSH ROD CAP: POLYPHTHARAMID UL94V-0 BLACK
PLATE AND PUSH ROD : STAINLESS
EMI CONTACT: PHOSPHOR BRONZE
- FINISH (PIN)
UNDER PLATING : 0.5 um Ni
CONTACT AREA : 0.1 um GOLD OVER 0.5um Pd-Ni (EXCEPT-250CA)
SOLDER TAIL : 2.5 um Sn-Pb

(6) DIM "X"

4.25±0.1	3.5±0.1	5.0±0.1
OTHERS	36,67	1,17,34,35,51,68

(7) TABLE J - PUSH ROD BUTTON LENGTH

**	DIM.S
CA	13.0
DA	15.6

** : SEE NOTE (7) TABLE J

CONFIDENTIAL

mat'l. code				tolerances unless otherwise specified			CUSTOMER COPY		FCI Electronics www.fciconnect.com	
ltr	ecn no	dr	date	linear	.X±.3	projection	title	3.3V EJECTOR HEADER ASS'Y		
E					.XX±.13		68POS. SMT TYPE I II III			
				angles	.XXX±.051		product family	PCMCIA		code
				dr	R.GRAPE 4/22/98	MM	size	dwg no		sheet
				engr	D.BRANN 4/22/98	1/1	A4	74872		3 of
				chr	D.BRANN 4/22/98	scale				
				appd	D.BRANN 4/22/98					
sheet index	revision sheet						cage code			

PRODUCT NUMBER
74872-****/****LF

P.C.B. SIDE	PUSH ROD LOCATION	PRODUCT NO.	HDR & PWB ASS'Y	EJ ASS'Y	DIM L
BELOW	LEFT	74872-655**LF	55977-5550LF	95627-00**	6.55
		74872-645**LF	55977-5543LF	95627-00**	6.55
		74872-625**LF	55977-5522LF	95627-00**	9.0
	RIGHT	74872-605**LF	55977-5500LF	95627-10**	10.0
		74872-555**LF	55977-5550LF	95627-10**	6.55
		74872-545**LF	55977-5543LF	95627-10**	6.55
ABOVE	LEFT	74872-525**LF	55977-5522LF	95627-10**	9.0
		74872-505**LF	55977-5500LF	95627-10**	10.0
		74872-155**LF	55977-0550LF	95627-10**	6.55
	RIGHT	74872-145**LF	55977-0543LF	95627-10**	6.55
		74872-125**LF	55977-0522LF	95627-10**	9.0
		74872-105**LF	55977-0500LF	95627-10**	10.0
		74872-250CALF(10)	55977-0150LF	95627-05CA	-0.3
		74872-055**LF	55977-0550LF	95627-00**	6.55
		74872-045**LF	55977-0543LF	95627-00**	6.55
		74872-025**LF	55977-0522LF	95627-00**	9.0
		74872-005**LF	55977-0500LF	95627-00**	10.0

NOTES:

- 8mm MIN. CARD EJECT.
- EJECT TRAVEL: 9.5mm
- PUSH ROD LOCATION AND P.C.B. SIDE ARE AS APPEARS INSTALLED.
- MATERIAL
 - PART (A) (HEADER ASS'Y)
 - PLASTIC : HOUSING ...LCP UL94V-0
 - PIN : PHOSPHOR BRONZE
 - PCB : FR4
 - PART (B) (EJECT MECHANISM ASS'Y)
 - PLASTIC : GUIDE: POLYPHTHARAMID UL94V-0 BLACK
 - PUSH ROD CAP: POLYPHTHARAMID UL94V-0 BLACK
 - PLATE AND PUSH ROD : STAINLESS
 - EMI CONTACT: PHOSPHOR BRONZE
- FINISH (PIN)
 - UNDER PLATING : 1.27µm Ni
 - CONTACT AREA : 0.1µm GOLD OVER 0.5µm Pd-Ni (EXCEPT-250CA)
 - SOLDER TAIL : 2.5µm PURE Sn

(6) DIM "X"

4.25±0.1	3.5±0.1	5.0±0.1
OTHERS	36,67	1,17,34,35,51,68

(7) TABLE J - PUSH ROD BUTTON LENGTH

**	DIM.S
CA	13.0
DA	15.6

** : SEE NOTE (7) TABLE J

- RECOMMENDED SCREW TORQUE 1.0 TO 1.5 MAX in-lbs (1.2-1.7 cm-kgs).
- THREADED INSERTS ARE INSTALLED IN HEADER 55977.
- 74872-250CA HAS 5mm STAND-OFFS AND CONTACT AREA PLATING 0.1µm GOLD OVER 0.8µm Pd-Ni - PAGE 4
- RECOMMENDED MATING CONNECTOR P/N 91931-31169 OR 91931-31169LF
- RECOMMENDED PCB LAYOUTS-TA1056
- IF LEAD FREE P.N.THE HOUSING WILL WITHSTAND EXPOSURE TO 260°C PEAK TEMPERATURE FOR 10 SECONDS IN A WAVE SOLDER APPLICATION WITH A 1.00MM MINIMUM THICK CIRCUIT BOARD.
- IF LEAD FREE P/N.THE PRODUCT MEETS EUROPEAN UNION DIRECTIVES AND OTHER COUNTRY REGULATIONS AS DESCRIBED IN GS-22-008
- LEAD FREE P/N PACKAGING MEETS GS-14-920 SPECIFICATION

CONFIDENTIAL

mat'l. code		tolerances unless otherwise specified		CUSTOMER COPY		Electronics	
ltr	ecn no	dr	date	linear	projection	www.fciconnect.com	
E				.X±.3	3.3V EJECTOR HEADER ASS'Y	FCI	
				.XX±.13	68POS. SMT TYPE I II III	title	
				.XXX±.051	MM	product family PCMCIA	
				angles 0° ±2'	1/1	size	
				dr R.GRAPE 4/22/98	A4	74872	
				enrg D.BRANN 4/22/98	scale	sheet 4 of	
				chr D.BRANN 4/22/98			
				appd D.BRANN 4/22/98			
sheet index	revision					cage code	
	sheet						

Tous droits strictement reserves. Reproduction ou communication a des tiers interdite sous quelque forme que ce soit sans autorisation écrite du propriétaire. Propriete de c FCI. Droits de reproduction FCI.

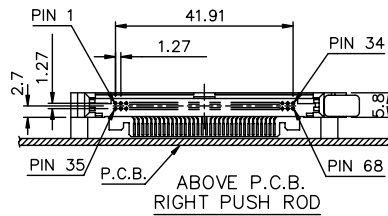
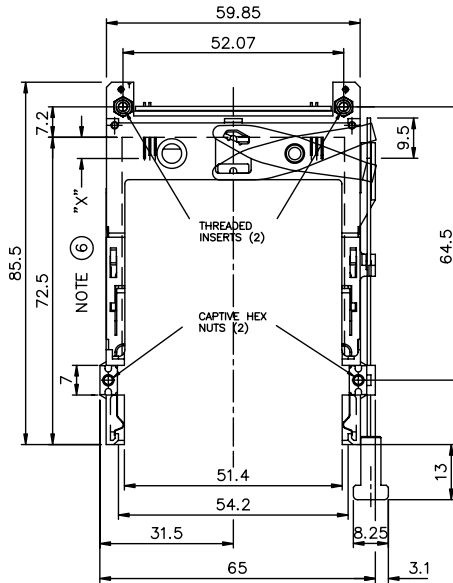
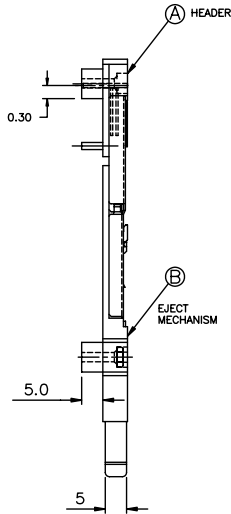
All rights strictly reserved. Reproduction or issue to third parties in any form whatever is not permitted without written authority from the proprietor. Property of FCI. Copyright FCI.

Tous droits strictement réservés. Reproduction ou communication à des tiers interdite sous quelque forme que ce soit sans autorisation écrite du propriétaire. Propriété de c FCI. Droits de reproduction FCI.

All rights strictly reserved. Reproduction or issue to third parties in any form whatever is not permitted without written authority from the proprietor. Property of FCI. Copyright FCI.

FCI

PRODUCT NO.
74872-250CA
74872-250CALF



74872-250CA/250CALF

mat'l. code		tolerances unless otherwise specified		CUSTOMER COPY		Electronics www.fciconnect.com	
ltr	ecn no	dr	date	linear	.XX±.13	projection	title
E					.XX±.13		3.3V EJECTOR HEADER ASS'Y
				angles	.XXX±.051		product family
				dr	0° ±2'	MM	PCMCIA
				engr	R. GRAPE 4/22/98	scale	code
				chr	D. BRANN 4/22/98	1:1	size
				appd	D. BRANN 4/22/98	A4	74872
sheet index	revision sheet						sheet 5 of

ACAD

PDM: Rev: E

STATUS Released 2.6 Printed: Oct 12, 2010