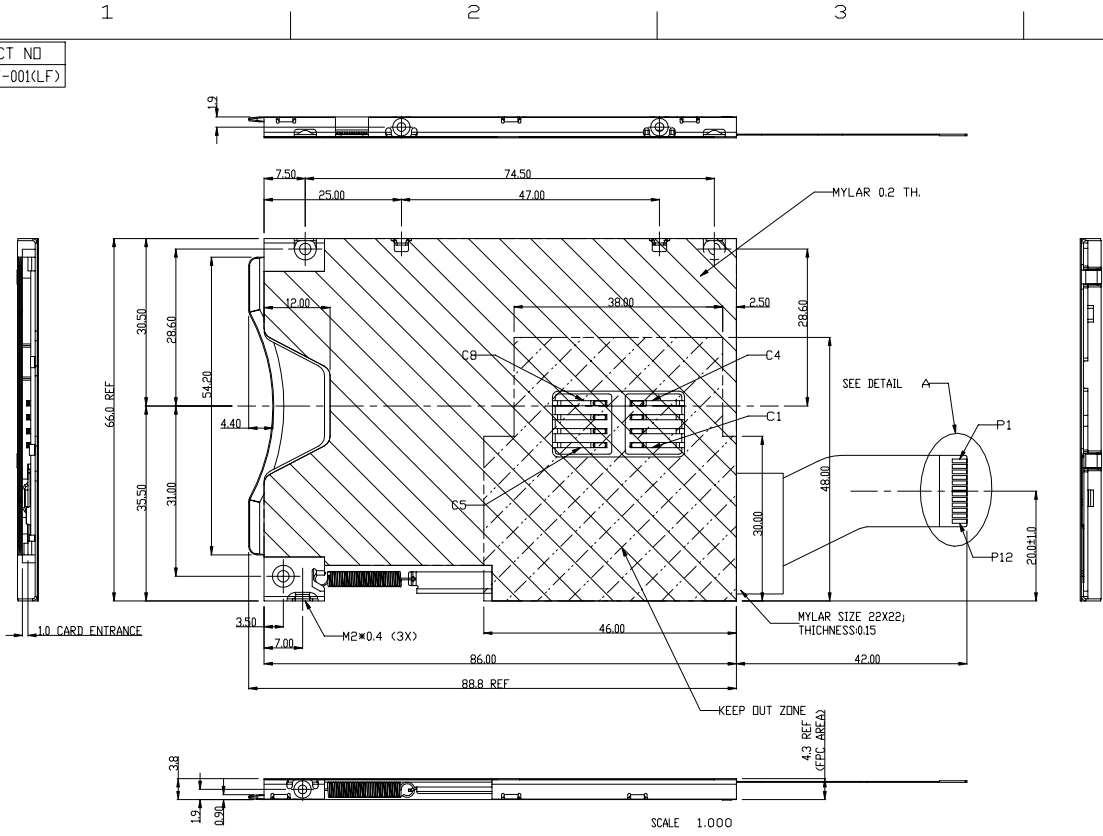


Tous droits strictement réservés. Reproduction ou communication à des tiers interdite sous quelque forme que ce soit sans l'autorisation écrite du propriétaire. Propriété de FCJ. Droits de reproduction FCJ.



All rights strictly reserved. Reproduction or issue to third parties in any form whatever is not permitted without written consent of the owner. Property of FCJ. Copyright FCJ.

PRODUCT NO
10026297-001(LF)



| SMART CARD | FPC | FUNC. |
|------------|-----|----------|
| C4 | P1 | RFU |
| C3 | P2 | Clock |
| C2 | P3 | Reset |
| C1 | P4 | Vcc |
| SENSOR 1 | P5 | SENSDR |
| | P6 | Reserved |
| SENSOR 2 | P7 | SENSOR |
| | P8 | Gnd |
| | P9 | Vpp |
| | P10 | I/O |
| | P11 | RFU |
| | P12 | Reserved |

www.fcjconnect.com

tolerance
~10±0.3
10~100±0.5

projection
MM

size A4
Scale 0.500

ECN N07-0108

| | | | |
|------|-----------|----------|----------------|
| Dr | KENNY TAI | 03/21/03 | Product family |
| Eng | KENNY TAI | 03/21/03 | Spec ref |
| Chr | KENNY TAI | 03/21/03 | Material |
| Appr | PAUL WANG | 03/21/03 | |

title SMARTPLUS B ASSY

dwg no 10026297

Rev. H

catalog no CUSTOMER sheet 1 of 4

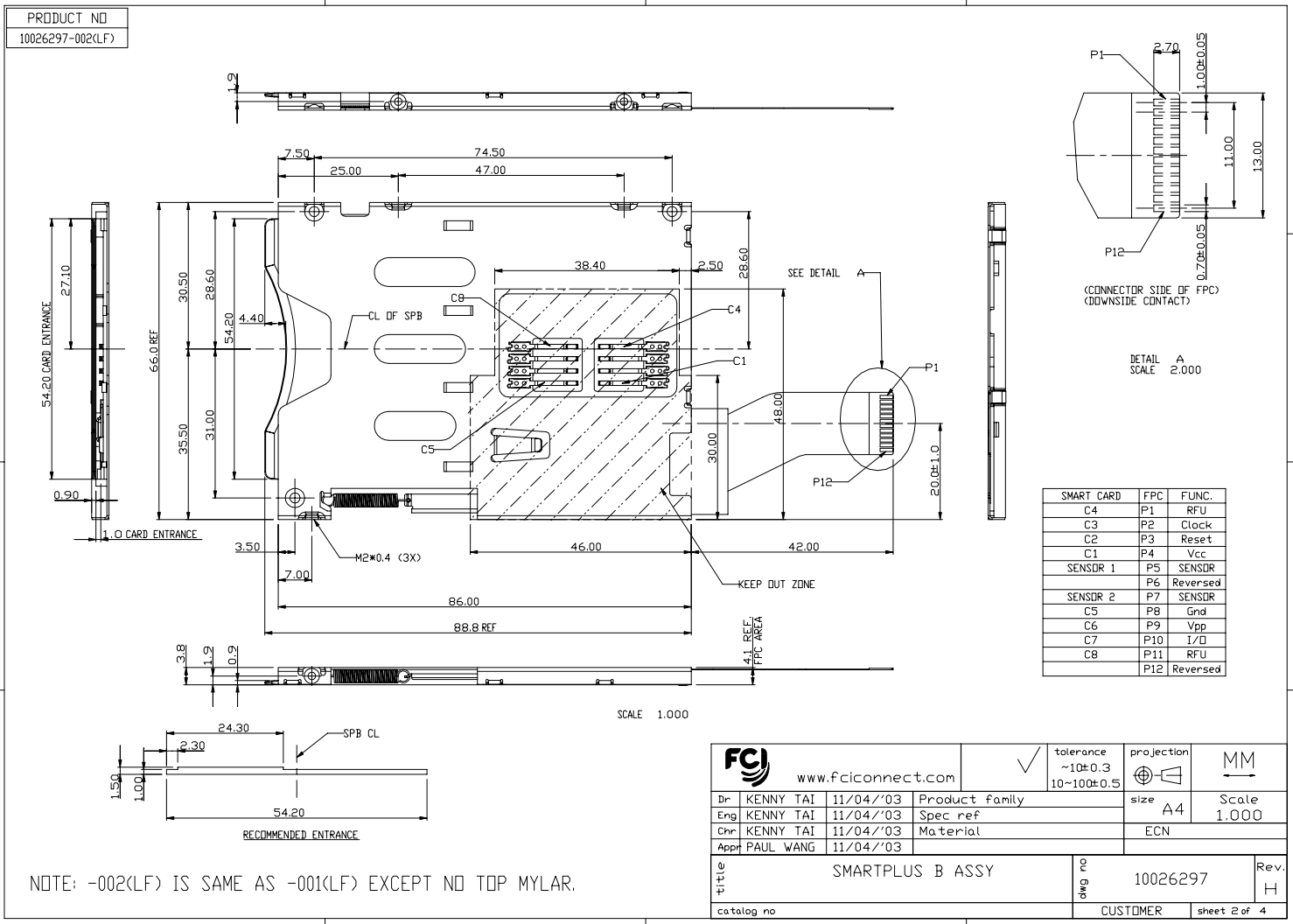
| rev | ecn no | dr | date |
|-----|----------|------|----------|
| D | N04-0078 | ALIE | 10/28/04 |
| E | N05-0203 | ALIE | 07/12/05 |
| F | N05-0218 | ALIE | 07/25/05 |
| G | N05-0224 | ALIE | 08/01/05 |
| H | N07-0108 | DT | 4/24/07 |

PDM: Rev:H STATUS:Released 4 Printed: Sep 25, 2007

Tous droits strictement réservés. Reproduction ou communication a des tiers interdite sous quelque forme que ce soit sans l'autorisation écrite et exclusive de la propriété de FCI. Droits de reproduction FCI.



All rights strictly reserved. Reproduction or issue to third parties in any form whatever is not permitted without written consent of FCI. Copyright FCI.

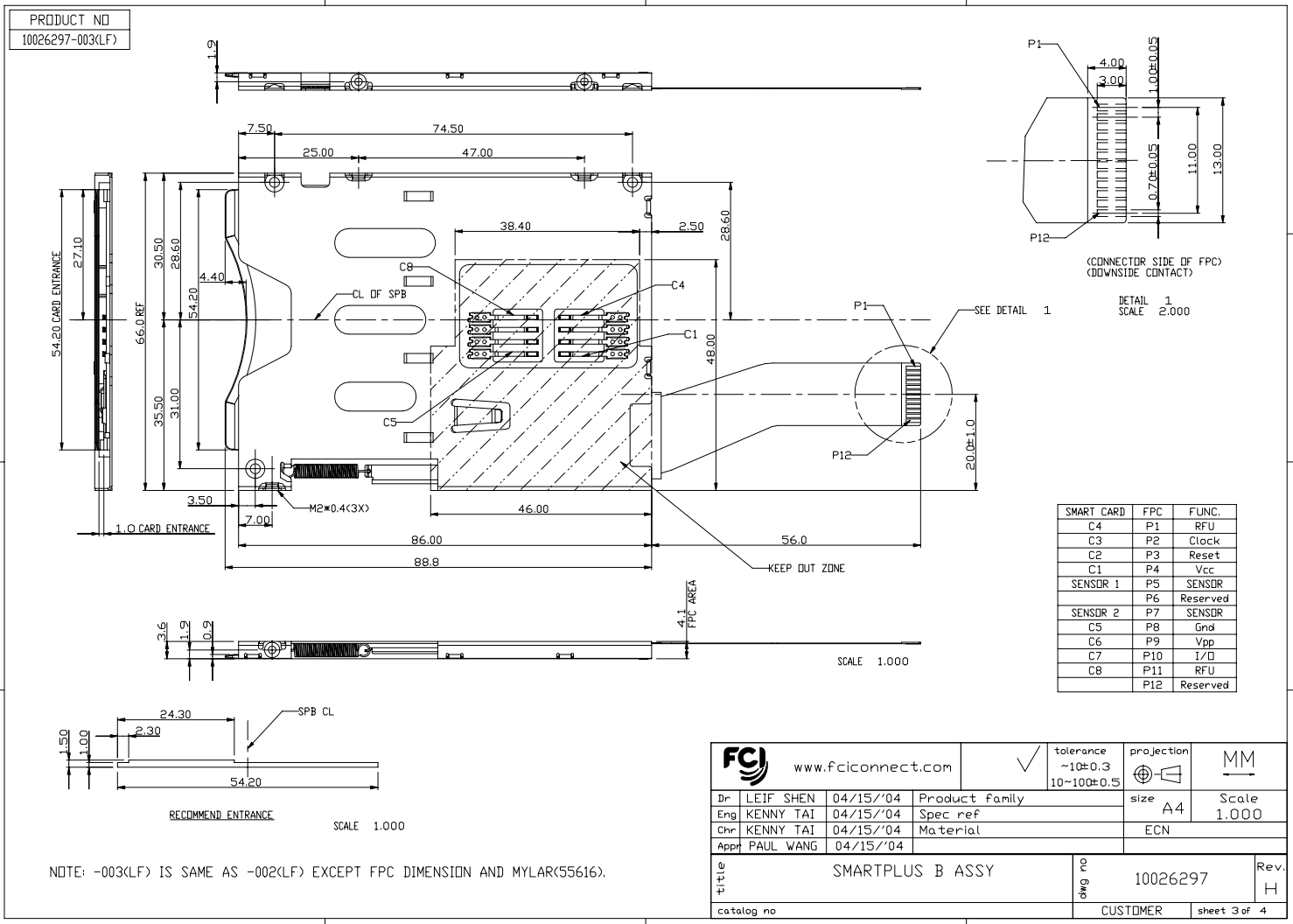


PDM: Rev:H STATUS:Released 4 Printed: Sep 25, 2007

Tous droits strictement réservés. Reproduction ou communication à des tiers interdite sous quelque forme que ce soit sans l'autorisation écrite et exclusive propriété de FCI. Droits de reproduction FCI.



All rights strictly reserved. Reproduction or issue to third parties in any form whatever is not permitted without written consent of FCI. Copyright FCI.



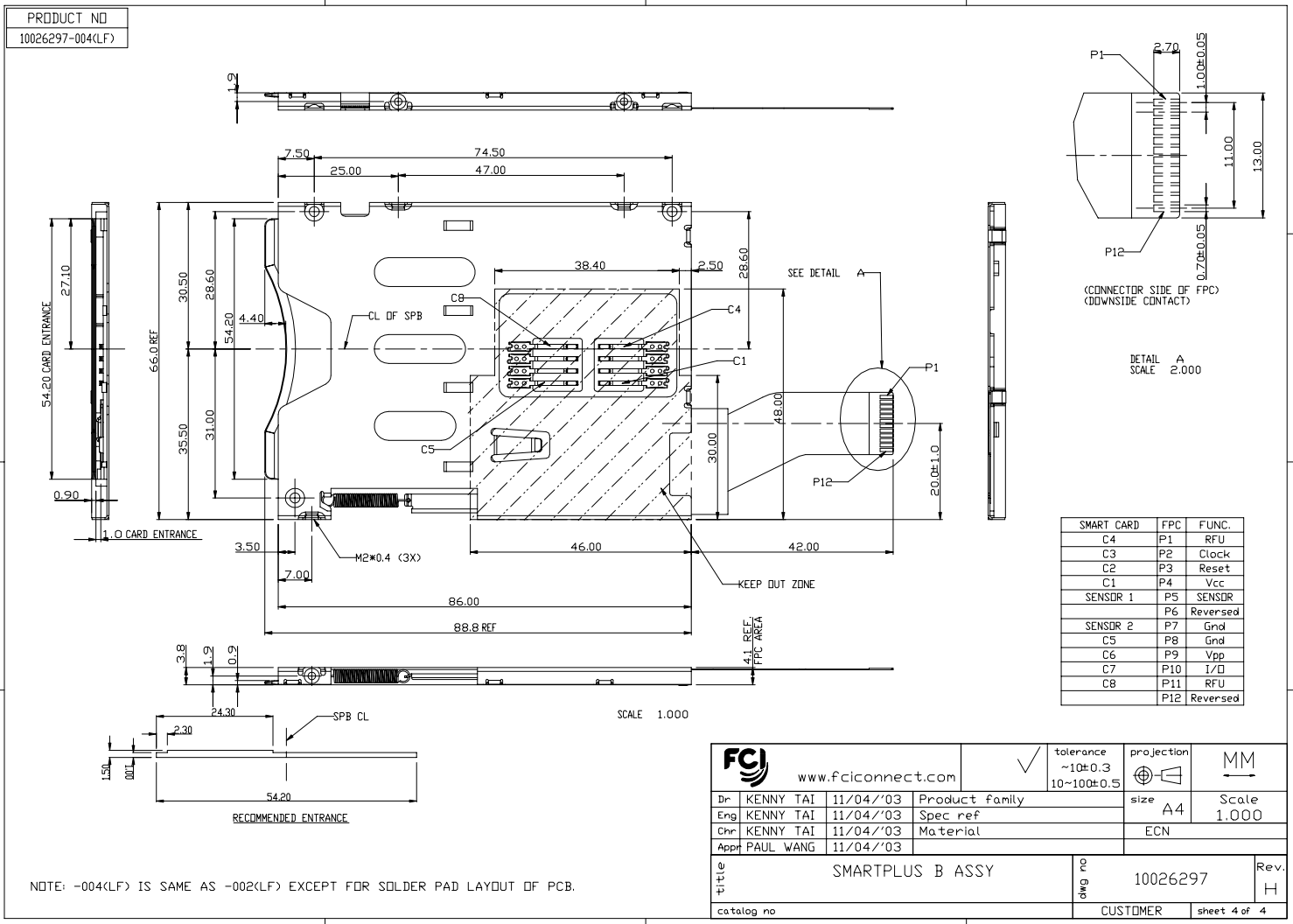
| SMART CARD | FPC | FUNC. |
|------------|-----|----------|
| C4 | P1 | RFU |
| C3 | P2 | Clock |
| C2 | P3 | Reset |
| C1 | P4 | Vcc |
| SENSOR 1 | P5 | SENSDR |
| | P6 | Reserved |
| SENSOR 2 | P7 | SENSDR |
| C5 | P8 | Gnd |
| C6 | P9 | Vpp |
| C7 | P10 | I/O |
| C8 | P11 | RFU |
| | P12 | Reserved |

| | | | | |
|---------------------------|-----------|------------------------------------|--------------------|--------------|
| www.fciconnect.com | | tolerance ~10±0.3 10~100±0.5 | projection A | MM |
| Dr | LEIF SHEN | 04/15/'04 | Product family | |
| Eng | KENNY TAI | 04/15/'04 | Spec ref | |
| Chr | KENNY TAI | 04/15/'04 | Material | |
| Appr | PAUL WANG | 04/15/'04 | | |
| title SMARTPLUS B ASSY | | | eng no 10026297 | Rev. H |
| catalog no | | | CUSTOMER | sheet 3 of 4 |

Tous droits strictement réservés. Reproduction ou communication a des tiers interdite sous quelque forme que ce soit sans l'autorisation écrite et exclusive de la propriété de FCI. Droits de reproduction FCI.



All rights strictly reserved. Reproduction or issue to third parties in any form whatever is not permitted without written consent of FCI. Copyright FCI.



| | | | | | |
|------------|-----------|--------------------|------------------------------------|----------------|----------|
| | | www.fciconnect.com | tolerance ~10±0.3 10~100±0.5 | projection | MM |
| Dr | KENNY TAI | 11/04/03 | Product family | size | A4 |
| Eng | KENNY TAI | 11/04/03 | Spec ref | Scale | 1.000 |
| Chr | KENNY TAI | 11/04/03 | Material | ECN | |
| Appr | PAUL WANG | 11/04/03 | | | |
| title | | | SMARTPLUS B ASSY | dwg no | 10026297 |
| catalog no | | | CUSTOMER | Rev. | H |
| | | | sheet | 4 of 4 | |

PDM: Rev:H STATUS:Released 4 Printed: Sep 25, 2007