

B

A

TABLE-1

Pin Type	Interface Dim.(In.)	Pin No.
Detect	3.50 mm (0.138 In.)	25,26
General	4.25 mm (0.167 In.)	The others
Power	5.00 mm (0.197 In.)	01,13,38,50

TABLE-2

PART NUMBERS	DIM. A	DIM. B
10038393-X050 Normal Type	0.80	1.40
10038393-X150 Reverse Type	1.40	0.80

Tolerance=±0.05

mod'l. code		tolerances unless otherwise specified				CUSTOMER COPY		product family		code	
itr	ecn no	dr	date	linear	.X ±.38	projection	CF	product family	code	sheet	of
A	T04-0327	J.H	7/16/04*		.XX ±.25	MM	CF	CF		1	2
B	T04-0384	A.C.	10/06/04		.XXX ±.10		SLIM TYPE				
C	T05-0057	A.C.	4/13/05	angles	0° ±.2°						
sheet	revision	C	C	JASON HSU	2/23/04*						
index	sheet	1	2	JASON HSU	2/23/04*						
				engr	JASON HSU					sheet	
				chr	STERLING LIN					1 of 2	
				oppl	JAMES HSU					1 of 2	

ACAD

1 | 2

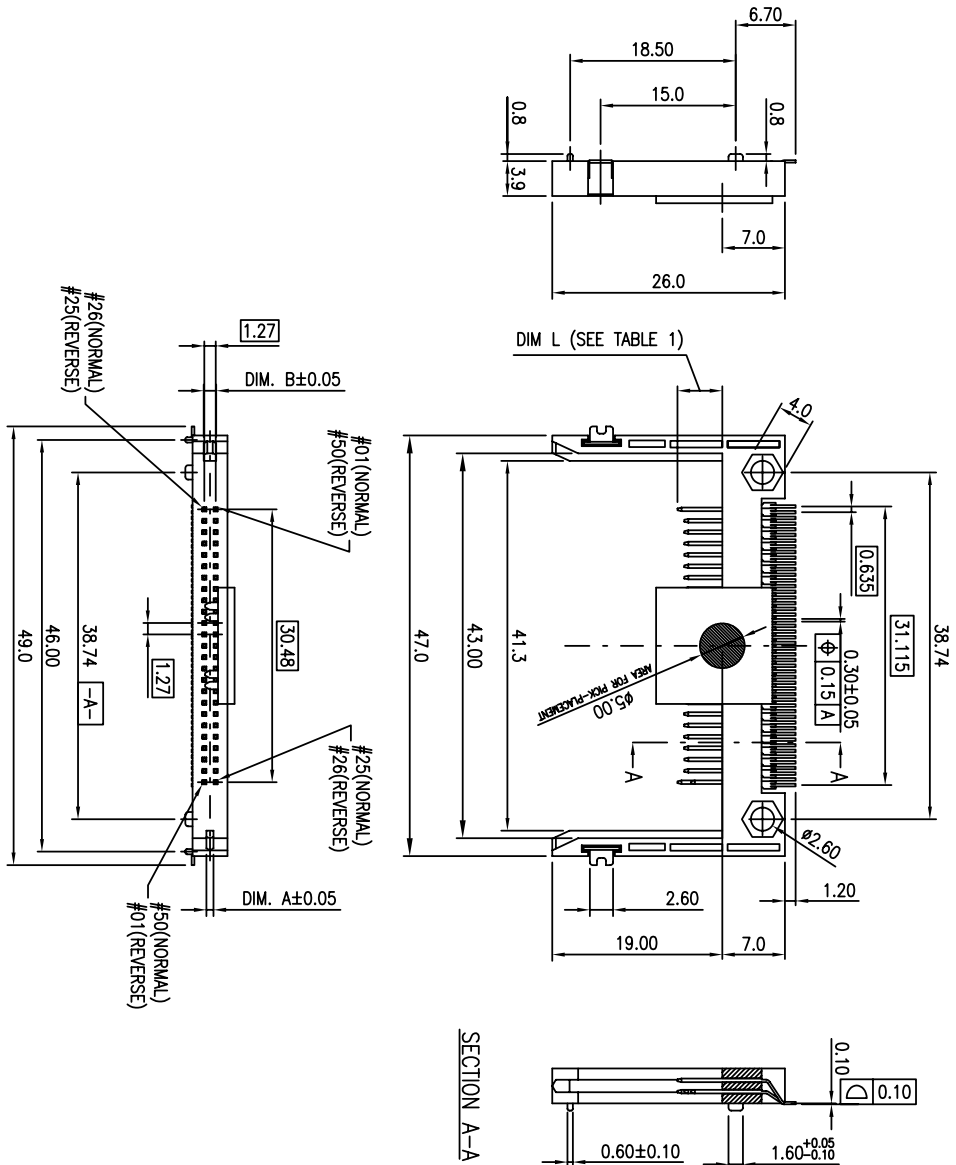
3 |

4

cage code 22526

B

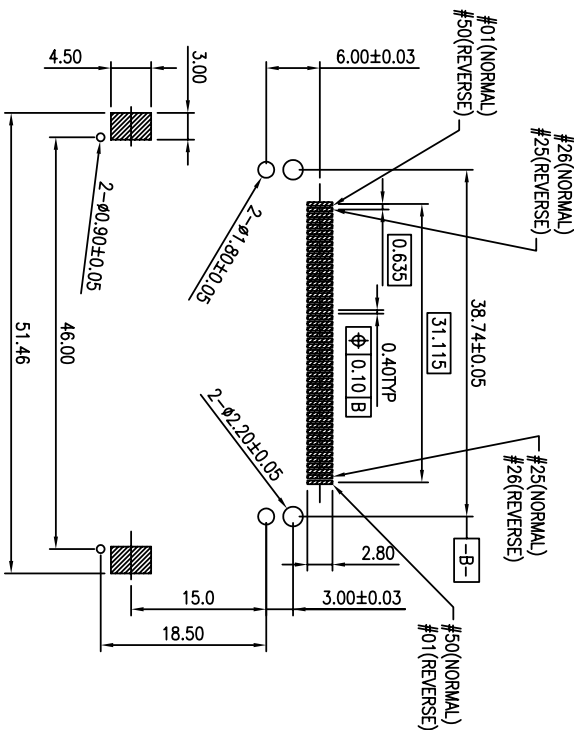
A



B

NOTES:

1. MATERIAL:
 - HOLD DOWN: COPPER ALLOY.
 - HOUSING: HIGH TEMPERATURE THERMOPLASTIC.
 - UL 94V-0 RATED.
 - TERMINAL: COPPER ALLOY.
2. TIN/LEAD PLATING SPEC:
 - HOLD DOWN : TIN/LEAD PLATED WITH 100U" MIN., OVER 50U" MIN. NICKEL UNDERPLATED.
 - TERMINAL : 50U"MIN. NICKEL UNDERPLATED OVER ALL 100U" MIN. TIN/LEAD PLATED IN SOLDERING AREA, SELECTIVE GOLD PLATED IN CONTACT AREA.
3. LEAD-FREE PLATING SPEC:
 - HOLD DOWN : PURE MATTE TIN PLATED WITH 100U" MIN., OVER 50U" MIN. NICKEL UNDERPLATED.
 - TERMINAL : 50U"MIN. NICKEL UNDERPLATED OVER ALL 100U" MIN. PURE MATTE TIN PLATED IN SOLDERING AREA, SELECTIVE GOLD PLATED IN CONTACT AREA.
4. THE HOUSING WILL WITHSTAND EXPOSURE TO 260 DEGREE C PEAK TEMPERATURE FOR 10 SECONDS IN A CONNECTION, INFRA-RED OR VAPOR PHASE REFLOW OVEN.
5. PRODUCT SPEC NO: GS-12-240.
- PACKAGE SPEC NO: GS-14-961.
6. THIS PRODUCT (10038393-XXXXXXLF) MEETS THE EUROPEAN UNION DIRECTIVE AS DESCRIBED IN GS-22-008, SUB CLAUSE 3.1 (DIRECTIVE 2002/95/EC).
7. PART NUMBER DESCRIPTION:
 - 10038393-X X 50 X X X X
 - LEAD-FREE PLATING OPTION:
 - BLANK: TIN/LEAD PLATING SPEC (SEE NOTE 2).
 - LF: LEAD-FREE PLATING SPEC (SEE NOTE 3).
 - PICK-UP CAP OPTION:
 - BLANK: WITHOUT PICK-UP CAP.
 - P: WITH PICK-UP CAP.
 - PACKAGING METHOD:
 - BLANK: PVC TRAY.
 - T: TAPE & REEL(ONLY FOR THE PART WITH PICK-UP CAP)
 - KEY TYPE, SEE TABLE-2.
 - 0: NORMAL TYPE
 - 1: REVERSE TYPE
 - CONTACT AREA PLATING:
 - D: 15U" GOLD.
 - E: 30U" GOLD.



RECOMMENDED P.C.B. LAYOUT (General Tolerance±0.05)

mod'l. code		tolerances unless otherwise specified		CUSTOMER COPY		title	
ltr	ecn no	dr	date	linear	projection	product family	code
C				.XX ±.25	MM	CF CARD HEADER	
				.XXX ±.10		SLIM TYPE	
				Ø ±.2		CF	
				dr JASON HSU 2/23/04*		product family	
				engr JASON HSU 2/23/04*		size dwg no	
				chr STERLING LIN 2/23/04*		code	
				opnd JAMES HSU 2/23/04*		sheet	
						2 of 2	
sheet	revision						
index	sheet	1	2				

ACAD

cage code
22526