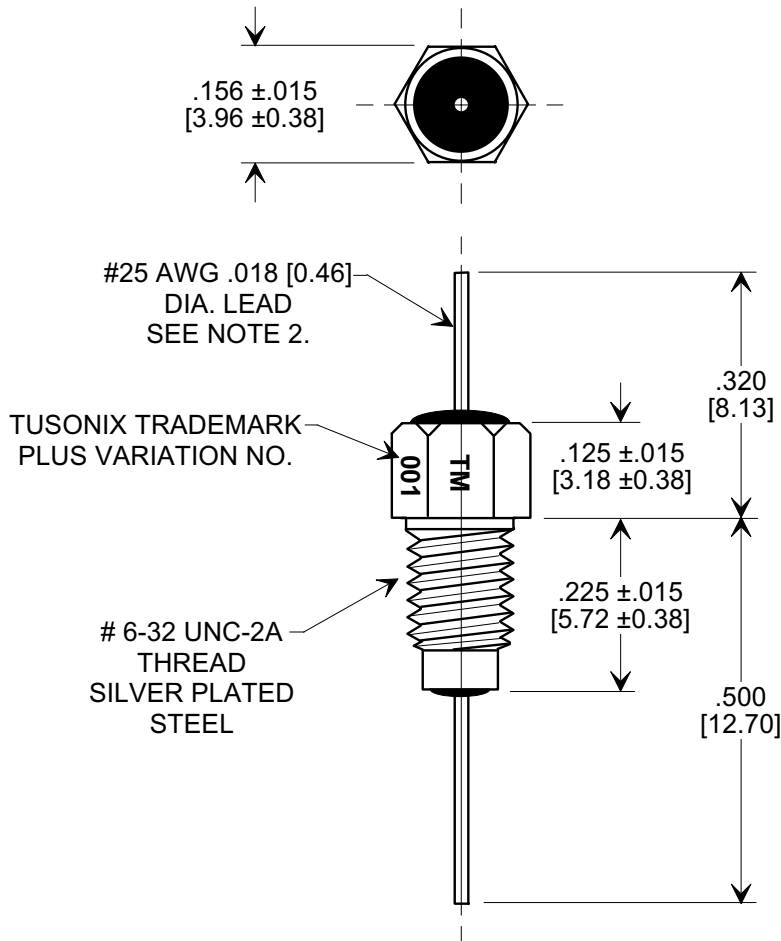
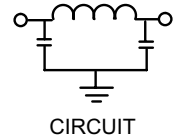
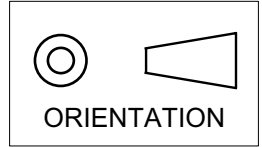


MARKETING SALES DRAWING

DIMENSIONS IN INCHES - DO NOT SCALE THIS DRAWING
DIMENSIONS IN METRIC - []

Electrical Testing
 per Tusonix standard
 test plans and Mil-Std-202
 Test Methods.



NOTES:

1. TUSONIX STANDARD PART NUMBER: 4260-001.
 TUSONIX RoHS COMPLIANT PART NUMBER: 4260-001 LF.
 CUSTOMER MUST SPECIFY STANDARD OR RoHS PART NUMBER WHEN ORDERING.
2. LEAD FINISH: STANDARD PART #: SOLDER PLATED COPPER. RoHS PART #: SILVER PLATED.
3. PART MARKING: TRADEMARK AND VARIATION NUMBER ON HEX FLATS.
 STANDARD PART: BLACK INK. RoHS PART: GREEN INK.
4. SUPPLIED WITH SILVER PLATED COPPER ALLOY HEX NUT AND INTERNAL TOOTH LOCK WASHER.

5,500	50 VDC	10 GΩ	125 VDC	3 A	7	14	30	55	70	70
MIN. CAP.(pf)	+ 125 °C	I.R. MIN. @ 100 VDC	DWV	CURRENT	3 MHz	10 MHz	30 MHz	100 MHz	300 MHz	1 GHz
	DC WORKING VOLTAGE						MINIMUM NO LOAD INSERTION LOSS (dB) AT 25°C PER MIL-STD-220			

X-2015 Rev-0	REVISION RECORD			--TOLERANCES-- Unless Otherwise Specified	Title		
	Original Release C.O. 6611	1			MULTI LAYER BUSHING STYLE EMI FILTER		
	DIM'S REV., TITLE CHGD. E.C. 5-26-92			DECIMAL ± .031 [0.79]	Drawn	S. M. 03-04-02	Scale 4 X
	RDN TO COMP FMT. S.M. 03-04-02	2		ANGLES ±	Approved	T.C. 03-04-02	
20020528-3-08			TUSONIX TUCSON, ARIZONA	A	4260-001		
ADDED NOTES 1-4. S.M. 12-06-05	3						
20051118-2-08							