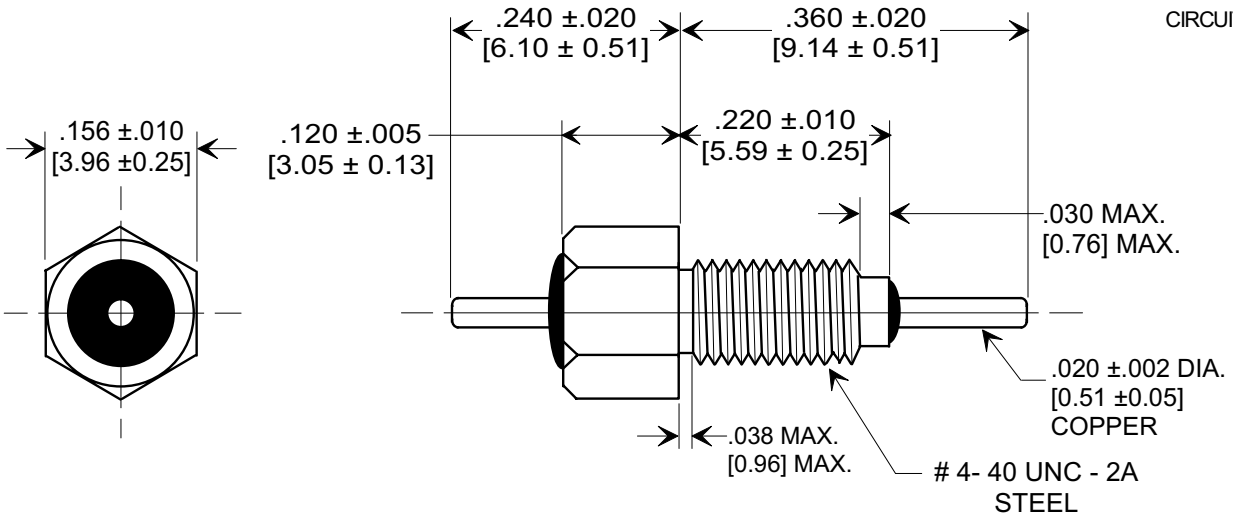
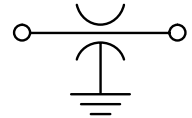
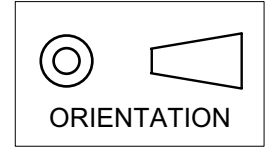


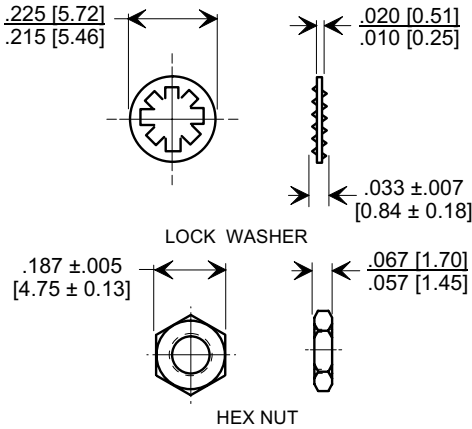
# MARKETING SALES DRAWING

Electrical Testing  
per Tusonix standard  
test plans and Mil-Std-202  
Test Methods.

**DIMENSIONS IN INCHES - DO NOT SCALE THIS DRAWING**  
**DIMENSIONS IN METRIC - [ ]**



### MOUNTING HARDWARE



### NOTES:

- TUSONIX STANDARD PART NUMBER: 4400-016.  
TUSONIX RoHS COMPLIANT PART NUMBER: 4400-016 LF.  
CUSTOMER MUST SPECIFY STANDARD OR RoHS PART NUMBER WHEN ORDERING.
- LEAD, BUSHING, AND MOUNTING HARDWARE: SILVER PLATED.
- PART MARKING: TRADEMARK AND VARIATION NUMBER ON HEX FLATS. STANDARD PART: BLACK INK. RoHS PART: GREEN INK.
- OPERATING TEMPERATURE RANGE : -55°C TO +125°C.
- MAX. RECOMMENDED SOLDERING TEMPERATURE: 260°C.
- SUPPLIED WITH HEX NUT AND INTERNAL TOOTH LOCK WASHER.
- MAX. RECOMMENDED MOUNTING TORQUE - 2.0 lb.-in. [.226 Nm].

50,000	GMV	50	50	10 G Ω	100	10	15	35	45	70
CAP.(pf)	TOLERANCE	85°C	125°C	I.R. MIN. @ 100 (VDC.)	DWV (VDC)	DC CURRENT (AMPS)	1 MHz	10 MHz	100 MHz	1 GHz
		DC WORKING VOLTAGE					MIN. NO LOAD INSERTION LOSS (dB) @ 25°C PER MIL-STD-220			

X-2015 Rev-0 <b>REVISION RECORD</b> Original Release C.O. <b>20031203-1-01</b> ADDED AND REVISED NOTES. S.M. 12-14-05 <b>20051122-2-13</b>	<b>0</b>	<b>1</b>	--TOLERANCES-- Unless Otherwise Specified	Title <b>BUSHING STYLE EMI FILTER</b>	
	DECIMAL ± NOTED		Drawn S.M. 12-03-03 Scale 5 X		
	ANGLES ±		Approved T.C. 12-03-03		
	<b>TUSONIX</b> TUCSON, ARIZONA		<b>A</b>	<b>4400-016</b>	