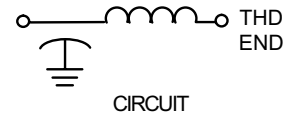
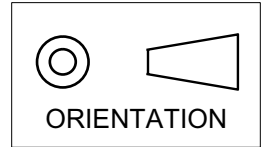
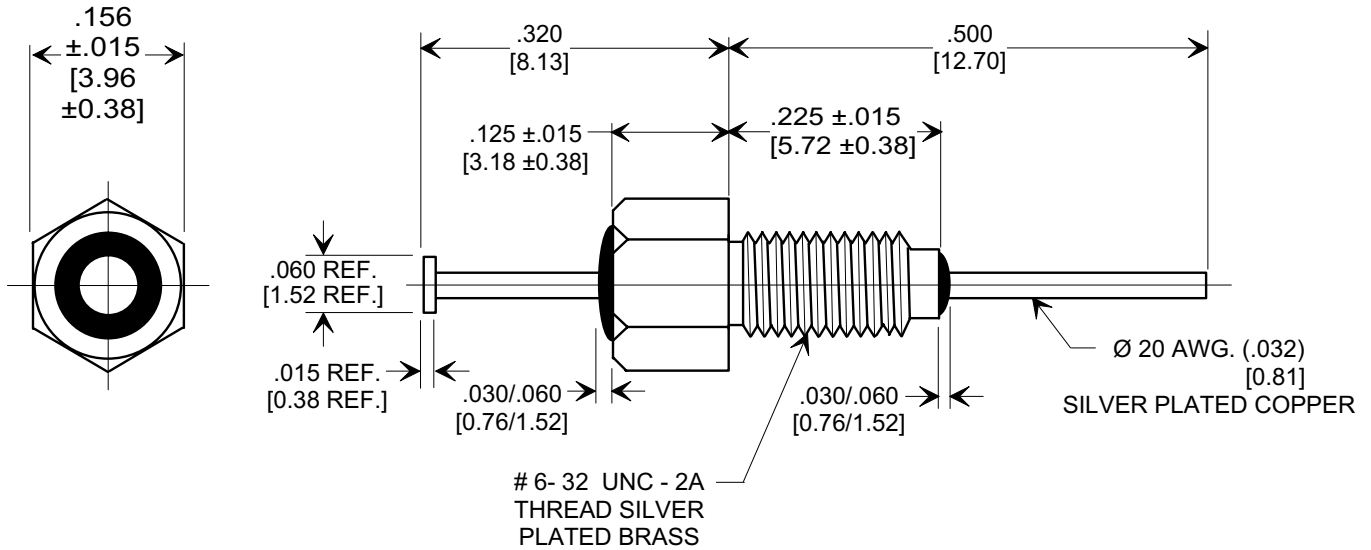


This drawing is the property of Tusonix, Inc., and may not be used, reproduced, published or disclosed to others without expressed authorization by Tusonix Inc.

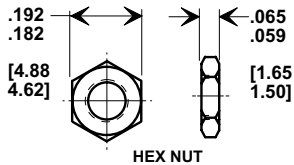
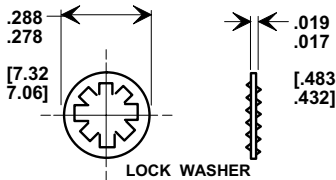
MARKETING SALES DRAWING
DIMENSIONS IN INCHES - DO NOT SCALE THIS DRAWING
DIMENSIONS IN METRIC - []



Electrical Testing
per Tusonix standard
test plans and Mil-Std-202
Test Methods.



MOUNTING HARDWARE



NOTES:

- TUSONIX STANDARD PART NUMBER: 4402-060.
 TUSONIX RoHS COMPLIANT PART NUMBER: 4402-060 LF.
 CUSTOMER MUST SPECIFY STANDARD OR RoHS PART NUMBER WHEN ORDERING.
- LEAD, BUSHING AND MOUNTING HARDWARE: SILVER PLATED.
- PART MARKING: TRADEMARK AND VARIATION NUMBER ON HEX FLATS.
- STANDARD PART: BLACK INK. RoHS PART: GREEN INK.
- OPERATING TEMPERATURE RANGE: -55°C TO +125°C.
- MAX. RECOMMENDED SOLDERING TEMPERATURE: 260°C.
- SUPPLIED WITH HEX NUT AND INTERNAL TOOTH LOCK WASHER.
- MAX. RECOMMENDED MOUNTING TORQUE: 2.0 Lb.-IN.

MIN. CAP.(pf)	DC WORKING VOLTAGE	DC CURRENT (AMPS)	I.R. MIN. @ 100 (VDC)	DWV (VDC)	MINIMUM NO LOAD INSERTION LOSS (dB) AT 25°C PER MIL-STD-220				
	-55° C TO 125° C				1 MHz	10 MHz	100 MHz	1 GHz	10 GHz
27,000	100	10 A	10 G Ω	150	10	28	45	65	---

REVISION RECORD Original Release C.O. 19980403-8-02 ADDED AND REVISED NOTES. ADDED IR & DWV. S.M. 05-03-06 20060501-2-02	0	1	--TOLERANCES-- Unless Otherwise Specified	Title BUSHING STYLE EMI FILTER
	DECIMAL ± .031 [0.79]			
	ANGLES ±	Drawn S.M. 04-06-98		
	TUSONIX TUCSON, ARIZONA	Approved J.Mc. 04-06-98		
			A	4402-060

X-2015 Rev-0