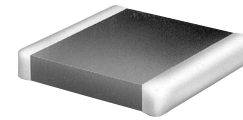


Electrical / Environmental

BMB

Surface Mount Multilayer Chip Beads,
0402 - 1812 Industry Sizes

- Operating Temperature Range -55°C to +125°C
- Resistance to Solder Heat 260°C for 10 sec.



Specifications / Packaging

0402, 0603, 0805, 1206, 1210, 1806 & 1812 Electrical Characteristics - Standard Speed

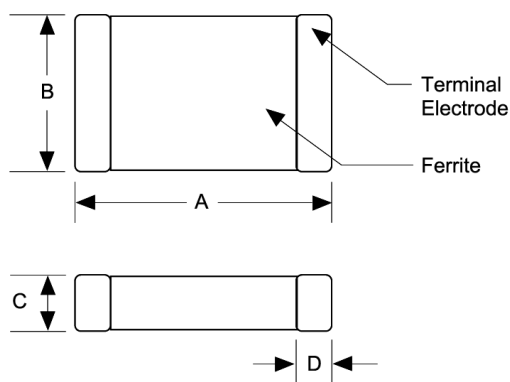
Part Number	Impedance Z $\Omega \pm 25\%$ @ 100 MHz	DCR Ω Max.	Rated Current mA Max.	7" Reel Qty (Units)	Part Number	Impedance Z $\Omega \pm 25\%$ @ 100 MHz	DCR Ω Max.	Rated Current mA Max.	7" Reel Qty (Units)
BMB0402A-600LF	60	0.35	300	10K	BMB0805A-221LF	220	0.20	500	4K
BMB0402A-121LF	120	0.40	300	10K	BMB0805A-301LF	300	0.20	500	4K
BMB0402A-301LF	300	0.80	200	10K	BMB0805A-401LF	400	0.30	500	4K
BMB0402A-601LF	600	1.00	200	10K	BMB0805A-601LF	600	0.30	500	4K
BMB0402A-102LF	1000	1.50	100	10K	BMB0805A-102LF	1000	0.35	300	4K
BMB0603A-100LF	10	0.05	600	4K	BMB0805A-152LF	1500	0.40	300	4K
BMB0603A-300LF	30	0.08	600	4K	BMB0805A-202LF	2000	0.50	200	4K
BMB0603A-400LF	40	0.10	600	4K	BMB0805A-222LF	2200	0.50	200	4K
BMB0603A-600LF	60	0.10	600	4K	BMB1206A-260LF	26	0.05	600	3K
BMB0603A-680LF	68	0.10	600	4K	BMB1206A-310LF	31	0.05	600	3K
BMB0603A-800LF	80	0.10	600	4K	BMB1206A-500LF	50	0.08	600	3K
BMB0603A-121LF	120	0.15	600	4K	BMB1206A-700LF	70	0.10	600	3K
BMB0603A-181LF	180	0.30	300	4K	BMB1206A-900LF	90	0.15	500	3K
BMB0603A-221LF	220	0.30	300	4K	BMB1206A-121LF	120	0.15	500	3K
BMB0603A-301LF	300	0.35	300	4K	BMB1206A-151LF	150	0.15	500	3K
BMB0603A-451LF	450	0.40	300	4K	BMB1206A-201LF	200	0.20	500	3K
BMB0603A-601LF	600	0.45	200	4K	BMB1206A-601LF	600	0.30	500	3K
BMB0603A-751LF	750	0.60	100	4K	BMB1206A-801LF	800	0.30	200	3K
BMB0603A-102LF	1000	0.60	100	4K	BMB1206A-102LF	1000	0.40	200	3K
BMB0805A-070LF	7	0.05	800	4K	BMB1206A-122LF	1200	0.40	200	3K
BMB0805A-110LF	11	0.05	800	4K	BMB1206A-152LF	1500 @ 50MHz	0.50	200	3K
BMB0805A-170LF	17	0.05	800	4K	BMB1206A-202LF	2000 @ 30MHz	0.50	200	3K
BMB0805A-260LF	26	0.05	800	4K	BMB1210A-310LF	31	0.30	400	2K
BMB0805A-320LF	32	0.05	800	4K	BMB1210A-600LF	60	0.30	400	2K
BMB0805A-400LF	40	0.05	800	4K	BMB1210A-900LF	90	0.30	400	2K
BMB0805A-600LF	60	0.15	800	4K	BMB1806A-800LF	80	0.10	400	2K
BMB0805A-800LF	80	0.15	800	4K	BMB1806A-101LF	100	0.20	300	2K
BMB0805A-900LF	90	0.15	800	4K	BMB1806A-151LF	150	0.30	200	2K
BMB0805A-121LF	120	0.15	800	4K	BMB1812A-700LF	70	0.40	200	1K
BMB0805A-151LF	150	0.15	800	4K	BMB1812A-121LF	120	0.40	200	1K
BMB0805A-181LF	180	0.20	500	4K					

Specifications / Packaging

0603, 0805 & 1206 Electrical Characteristics - High Speed

Part Number	Impedance $Z \Omega \pm 25\%$ @ 100 MHz	DCR Ω Max	Rated Current mA Max.	7" Reel Qty (Units)	Part Number	Impedance $Z \Omega \pm 25\%$ @ 100 MHz	DCR Ω Max	Rated Current mA Max.	7" Reel Qty (Units)
BMB0603B-121LF	120	0.45	200	4K	BMB0805B-601LF	600	0.35	200	4K
BMB0603B-301LF	300	0.45	200	4K	BMB0805B-102LF	1000	0.45	200	4K
BMB0603B-601LF	600	0.50	200	4K	BMB1206B-121LF	120	0.20	200	3K
BMB0805B-121LF	120	0.25	200	4K	BMB1206B-301LF	300	0.30	200	3K
BMB0805B-301LF	300	0.25	200	4K	BMB1206B-601LF	600	0.45	200	3K

Outline Dimensions (Inch/mm)



Part #	A Dim.	B Dim.	C Dim.	D Dim.
BMB 0402 (1005)	.04 ± .004 1.0 ± .10	.02 ± .004 .50 ± .10	.02 ± .004 .50 ± .10	.01 ± .004 .25 ± .10
BMB 0603 (1608)	.063 ± .006 1.6 ± 0.15	.031 ± .006 .80 ± 0.15	.031 ± .006 .80 ± 0.15	.012 ± .008 .30 ± .20
BMB 0805 (2012)	.079 ± .008 2.0 ± 0.2	.049 ± .008 1.25 ± 0.2	.035 ± .008 .90 ± 0.2	.020 ± .012 .50 ± .30
BMB 1206 (3216)	.126 ± .008 3.2 ± 0.2	.063 ± .008 1.6 ± 0.2	.043 ± .008 1.1 ± 0.2	.020 ± .012 .50 ± .30
BMB 1210 (3225)	.126 ± .008 3.2 ± 0.2	.098 ± .008 2.5 ± 0.2	.051 ± .008 1.3 ± 0.2	.020 ± .012 .50 ± .30
BMB 1806 (4516)	.18 ± .010 4.5 ± 0.25	.063 ± .008 1.6 ± 0.2	.063 ± .008 1.6 ± 0.2	.024 ± .016 .60 ± .40
BMB 1812 (4532)	.18 ± .010 4.5 ± 0.25	.126 ± .010 3.2 ± 0.25	.06 ± .010 1.5 ± 0.25	.024 ± .016 .60 ± .40

Ordering Information

