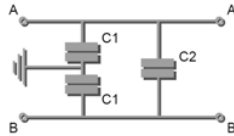


Filter Type
SFJEB

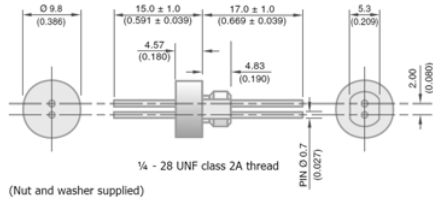
Integrated Passive Component Datasheet

(1/4-28 UNF Thread : Balanced Line EMI Filter Range)

Circuit Configuration



Dimensions mm (inches)



(Nut and washer supplied)

| Electrical Details | |
|------------------------------|---|
| Electrical Configuration | See Circuit Configuration |
| Capacitance Measurement | @ 1000hr Point |
| Temperature Rating | -55°C to +125°C |
| Rated Voltage | 200Vdc |
| Dielectric Withstand Voltage | 500Vdc |
| Dielectric | X7R |
| Mechanical Details | |
| Head Diameter | 9.8mm (0.386") |
| Nut A/F | 7.92mm (0.312") |
| Washer Diameter | 11.35mm (0.447") |
| Mounting Torque | 0.9Nm (7.97lbf in) max. |
| Mounting Hole Diameter | 6.7mm (0.264") O.D. 5.5mm (0.217") A/F |
| Max. Panel Thickness | 2.3mm (0.091") |
| Weight (Typical) | 3.0g (0.11oz) |
| Finish | Silver plate on copper undercoat |

| Product Code | Capacitance ±20% | Dielectric | Rated Voltage (dc) | DWV (dc) | Typical Insertion Loss (db) C. Line-Gnd Only | | | | | |
|-----------------|---|------------|--------------------------|-------------|---|--------|------|-------|--------|------|
| | | | | | 0.01MHz | 0.1MHz | 1MHz | 10MHz | 100MHz | 1GHz |
| SFJEB2000472MX1 | C ₁ = 4.7nF C ₂ = 2.35nF | X7R | 200 | 500 | | | 1 | 16 | 36 | 55 |
| SFJEB2000103MX1 | C ₁ = 10nF C ₂ = 5nF | X7R | 200 | 500 | | | 4 | 22 | 41 | 60 |
| SFJEB2000223MX1 | C ₁ = 22nF C ₂ = 11nF | X7R | 200 | 500 | | | 10 | 29 | 46 | 65 |
| SFJEB2000473MX1 | C ₁ = 47nF C ₂ = 23.5nF | X7R | 200 | 500 | | 1 | 16 | 35 | 50 | 70 |
| SFJEB2000104MX1 | C ₁ = 100nF C ₂ = 50nF | X7R | 200 | 500 | | 4 | 22 | 41 | 57 | >70 |

Ordering Information

| Type | Case Style | Thread | Electrical configuration | Voltage (dc) | C ₁ Capacitance in picofarads (pF) | Capacitance Tolerance | Dielectric | Nuts & washers |
|--------------|------------|------------|--------------------------|--------------|--|-----------------------|------------|----------------|
| SF | J | E | B | 200 | 0103 | M | X | 1 |
| Syfer Filter | 9.8mm O.D. | 1/4-28 UNF | Balanced Line Filter | 200 = 200V | First digit is 0. Second and third digits are significant figures of capacitance code. The fourth digit is the number of zeros following. Examples: 0472 = 4700pF 0223 = 22000pF | M = ±20% (Standard) | X = X7R | 1 = With |

L-C circuit optional – refer to factory

Note: The addition of a 4-digit numerical suffix code can be used to denote changes to the standard part.

Options include for example: change of pin length / custom body dimensions or threads / alternative voltage rating / non-standard intermediate capacitance values / test requirements.

Please refer specific requests to the factory.

