

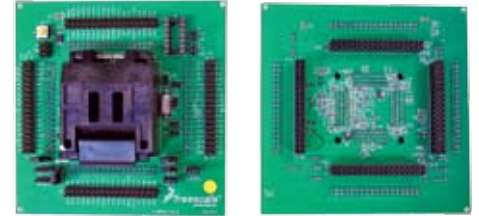
S12/S12X Adapter Cards Allow Evaluation of S12/S12X Derivatives

Freescale offers adapter cards which will allow the evaluation of derivatives within the S12/S12X family portfolio. The table below displays the targeted device (by family and package size), the compatible evaluation board and the correlating adapter card.

The EVB9S12XDP512 and the EVB9S12XEP100 are full-featured, ready to use evaluation boards for the MC9S12XDP512 and MC9S12XEP100 flagship microcontrollers, respectively. Additionally, these boards can be used to evaluate other members of the S12XD and S12XE as well as other S12/S12X families, including S12XH, S12XS and S12P.

The simple de-soldering of the main microcontroller from the evaluation board, and the integration of the adaptors card allows a user to evaluate the desired targeted microcontroller.

These lead-free Softec Microcontroller Personality Boards (SMPBs) are suitable for stand-alone use as a cost-effective development tool, device programming target or daughter cards for the Freescale MC9S12XDP512 or MC9S12XEP100 family EVBs. The cards offer support for S12/S12X families, with devices ranging from 48-pin QFN to 208-pin MAPBGA, .5 mm–0.65 mm pitch.



The cards include a CTI, Yamachi or Enflas zero insertion force (ZIF) socket, a background debug mode (BDM) connector and prototype connector ring. Configured for oscillator operation, the adaptor cards include support for a user supplied clock oscillator. They are compatible for use with any BDM tool.

Family	Package	Evaluation Board*	Pin-Specific Adapter Card*
S12XS Family			
	64 LQFP	EVB9S12XEP100	LFSMPBS12XSE2M
	80 QFP	EVB9S12XEP100	LFSMPBS12XSFM
	112 LQFP	EVB9S12XEP100	LFSMPBS12XSIM
S12XE Family			
	80 QFP	EVB9S12XEP100	LFSMPBS12XEFM
	112 LQFP	EVB9S12XEP100	LFSMPBS12XEIM
	144 LQFP	EVB9S12XEP100	LFSMPBS12XELM
	208 MAPBGA	EVB9S12XEP100	LFSMPBS12XEQM
S12XD Family			
	80 QFP	EVB9S12XDP512(E)	LFSMPBS12XD FM
	112 LQFP	EVB9S12XDP512(E)	LFSMPBS12XDIM
	144 LQFP	EVB9S12XDP512(E)	LFSMPBS12XDLM
S12XH Family			
	112 LQFP	EVB9S12XDP512(E)	LFSMPBS12HIM
	144 LQFP	EVB9S12XDP512(E)	LFSMPBS12HLM
S12P Family			
	48 QFN	EVB9S12XEP100	LFSMPBS12PC1M
	64 LQFP	EVB9S12XEP100	LFSMPBS12PE2M
	80 QFP	EVB9S12XEP100	LFSMPBS12PFM

* Adapters and evaluation boards available for purchase through Freescale.

Learn More: For more information, please visit www.freescale.com/S12x.

Freescale and the Freescale logo are trademarks or registered trademarks of Freescale Semiconductor, Inc. in the U.S. and other countries. All other product or service names are the property of their respective owners. © Freescale Semiconductor, Inc. 2008

Document Number: SGS12XDTRCRDFLYR
REV 3

