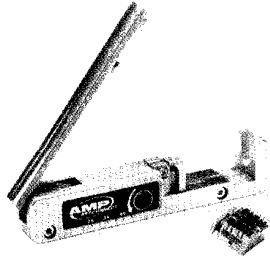


SL Series Modular Jack Tool

SL Series Modular Jack Termination Tool and Accessories



Product Facts

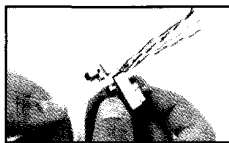
- :: Termination tool for SL Series Jacks
- :: Simplifies the termination process, especially for Category 6 Jacks
- :: Terminates and cuts all 8 conductors at once
- :: Simplifies lacing process and speeds up terminations
- :: Tool without Lacing Fixture is for use with SL Series AMP-TWIST 6S Modular Jacks

Description		Part Number
SL Series Modular Jack Termination Tool	With Lacing Fixture	1725150-1
	Without Lacing Fixture	1725150-3
Replacement Lacing Fixture		1673956-1

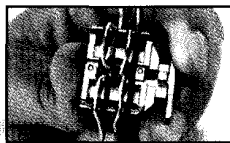
NOTE: Highlighted part numbers are routinely stocked for shortest lead times.

SL Series Modular Jack Termination Tool UTP Termination Method

3.9



Step 1



Step 2



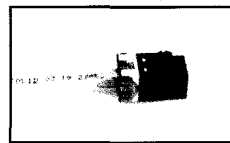
Step 3



Step 4



Step 5



Step 6