

60mm sq.

San Ace 60

15mm thick, 20mm thick, 25mm thick
 25mm thick (San Cooler), 38mm thick (GV type)
 38mm thick (G type)



General Specifications With a pulse sensor

- Material Frame: Plastics (Flammability: UL94V-0),
Impeller: Plastics (Flammability: UL94V-1)
- Life Expectancy Varies for each model (L10: Survival rate: 90% at 60°C,
rated voltage, and continuously run in a free air state)
- Lead Wire ⊕red ⊖black or blue (Sensor) yellow
- Storage Temperature -30°C to +70°C (Non-condensing)

60×60×15mm [Mass : 60g]

Specifications

Model No.	Rated Voltage [V]	Operating Voltage Range [V]	Rated Current [A]	Rated Input [W]	Rated Speed [min ⁻¹]	Air Flow		Static Pressure		SPL [dB(A)]	Operating Temperature [°C]	Life Expectancy [h]
109P0605H701	5	4.5 to 5.5	0.26	1.30	4,100	0.40	14.1	38.2	0.153	32	-10 to +70	60,000
109P0605M701			0.15	0.75	3,100	0.30	10.6	22.6	0.091	25		
109P0612K701	12	10.2 to 13.8	0.26	3.12	6,500	0.62	21.9	99.3	0.399	45	-10 to +60	40,000
109P0612S701			0.15	1.80	5,000	0.48	17.0	58.8	0.236	36		
109P0612H701		7 to 13.8	0.09	1.08	4,100	0.40	14.1	38.2	0.153	32		60,000
109P0612M701		10.2 to 13.8	0.07	0.84	3,100	0.30	10.6	22.6	0.091	25		
109P0624H701	24	14 to 27.6	0.06	1.44	4,100	0.40	14.1	38.2	0.153	32	-10 to +70	60,000
109P0624M701		20.4 to 27.6	0.04	0.96	3,100	0.30	10.6	22.6	0.091	25		

Without Sensor

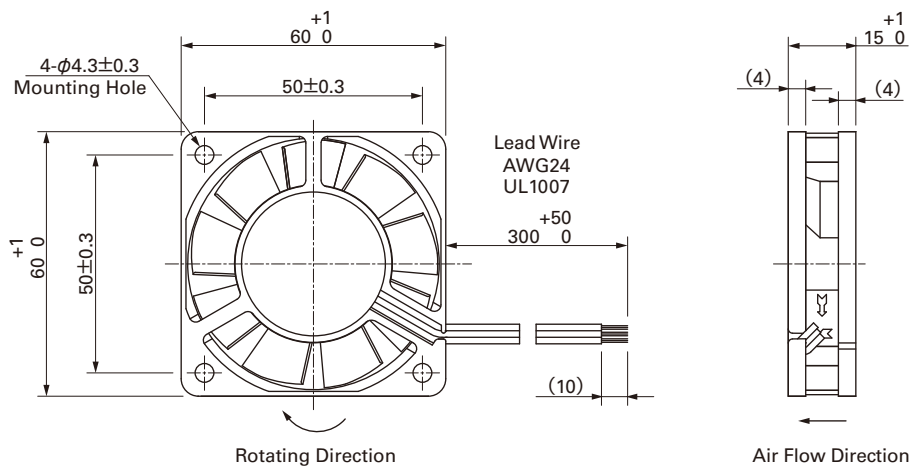
Pulse Sensor

Available in all models.

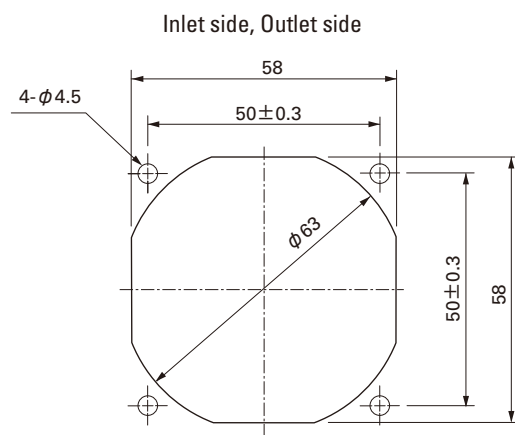
Lock Sensor

Please inquire as the availability of these functions depend on the model.

Dimensions (Unit : mm)



Reference dimension of mounting holes and vent opening (Unit : mm)



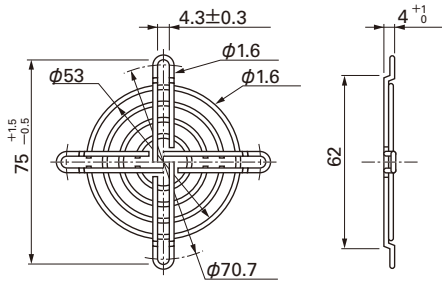
Options (Unit : mm)

Finger guards

Model : 109-139E Surface treatment : Nickel-chrome plating (silver)
: 109-139H : Cation electropainting (black)

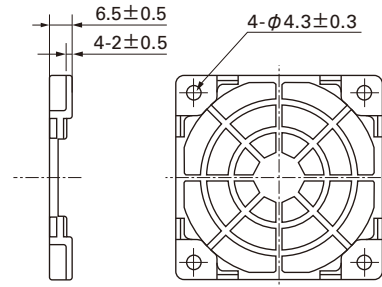
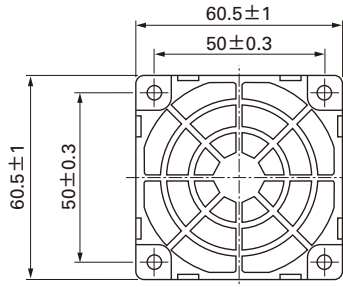
Color

Inlet side, Outlet side



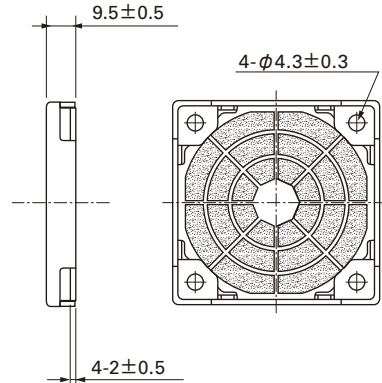
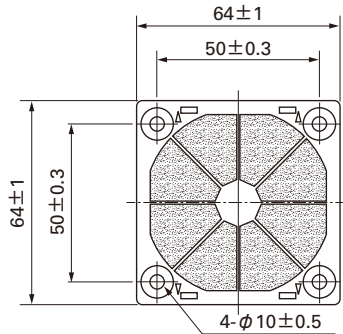
Resin finger guards

Model : 109-1003G



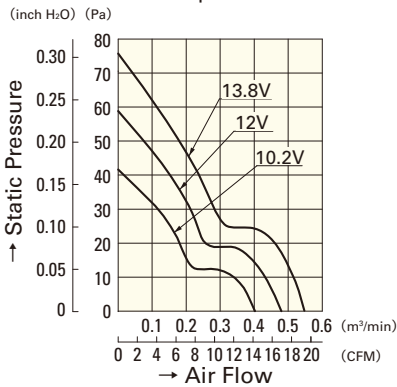
Resin filter kits

Model : 109-1003F13 (13PPI), 109-1003F20 (20PPI)
: 109-1003F30 (30PPI), 109-1003F40 (40PPI)



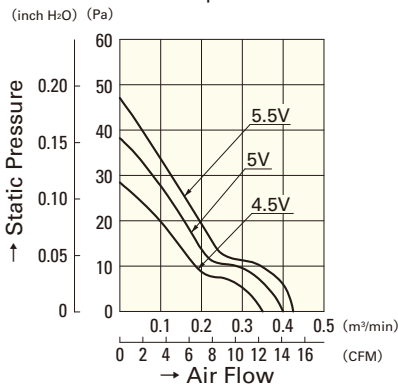
Air Flow and Static Pressure Characteristics

S speed



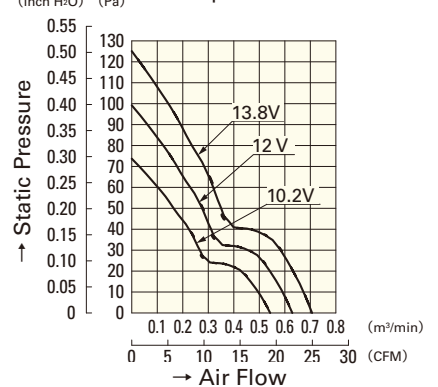
109P0612S701

H speed



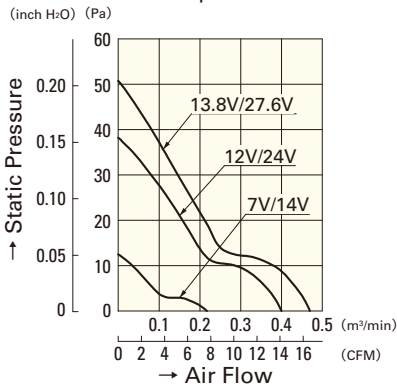
109P0605H701

K speed



109P0612K701

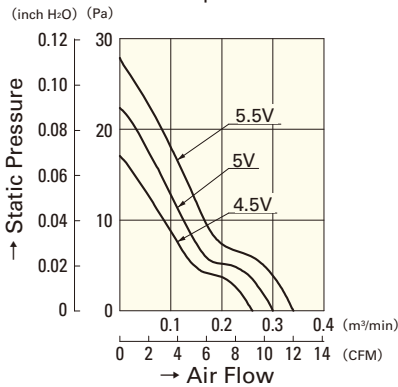
H speed



109P0612H701

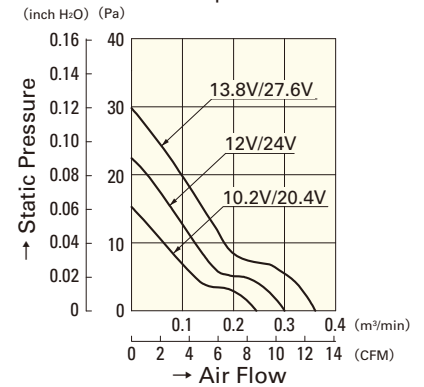
109P0624H701

M speed



109P0605M701

M speed



109P0612M701

109P0624M701