

C&K Rafx 16 Series Emergency Stop Pushbutton Switches



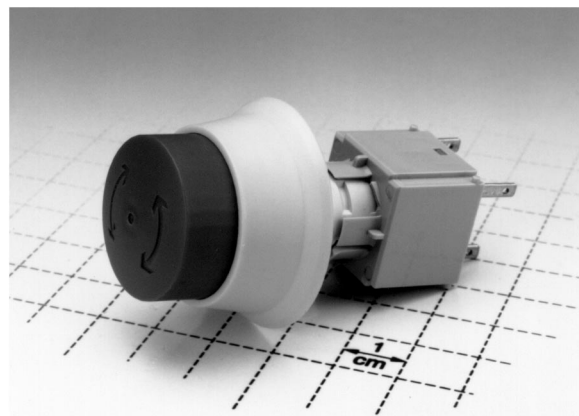
Models Available
(Contact block only)

Features/Benefits

- Instantly shuts down machinery
- Cannot be accidentally re-actuated
- Quick connect terminals
- Meets IEC EN 418 & CE requirements

Typical Applications

- Machine process control
- Textile machinery
- Medical equipment



B

Pushbutton

How To Order

To order, select actuator and contact block part numbers. Accessories available separately, see catalog section L. Other frame styles and illuminated versions available, consult Customer Service Center.

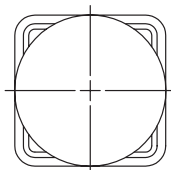
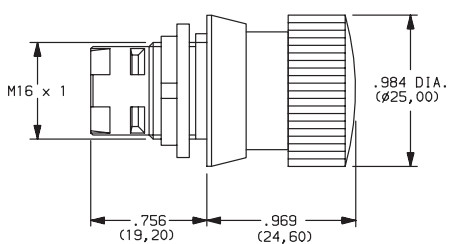
Specifications

CONTACT RATING: Ag: 6 AMPS @ 250 V AC.
Au: 250 mA @ 42 V AC/DC.
CONTACT SYSTEM: Self cleaning bridge contact.
CONTACT ARRANGEMENT: 1 N.C. & 1 N.O./2 N.O./2 N.C.
CONTACT RESISTANCE: Ag: 20 milliohms; Au: < 50 milliohms.
FIXING: Hexagon nut
OPERATING LIFE: 30,000 cycles.
OPERATING FORCE: > 30N.
OPERATING TEMPERATURE: -25°C to +70°C; -13°F to +158°F.
SWITCHING TRAVEL: Approximately 3mm.
DEGREE OF PROTECTION: IP65; dust-proof, water splash and dew condensation.

Materials

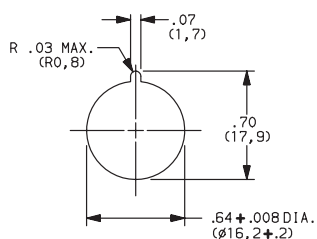
SWITCH HOUSING: PA
COLLAR: PBTB.
CONTACT BLOCK HOUSING: PA 12.
ACTUATOR: PA.
CONTACT MATERIAL: Silver nickel/gold.
TERMINALS: Quick connect 2.8 x 0.8 tin plated.
FLAMMABILITY OF PLASTIC MATERIALS: UL 94V-0.

Non-illuminated Emergency Stop Pushbutton Switches



1.30074.1010301

PANEL MOUNTING



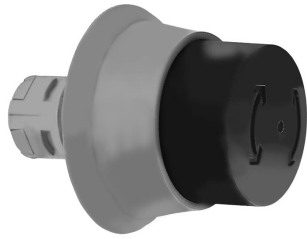
PANEL THICKNESS
.02 - .20 (0.5 - 5.0)

NON-ILLUMINATED SWITCHES	
PART NUMBER	COLLAR COLOR
1.30074.1010301	Black
1.30074.1020301	Yellow

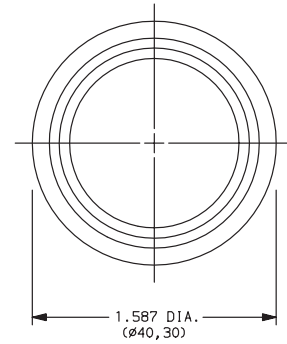
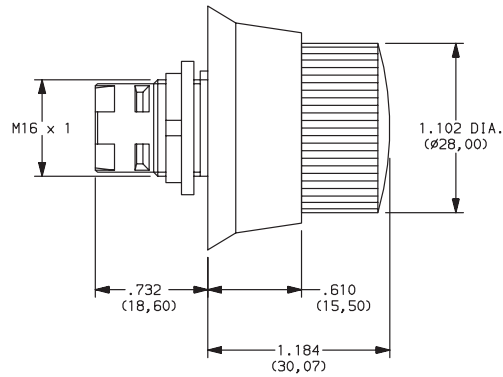
For contact block, see page B-90.

C&K Rafx 16 Series Emergency Stop Pushbutton Switches

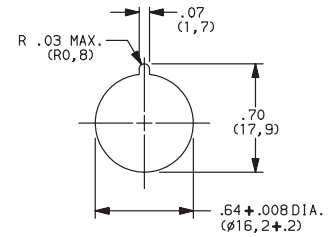
Non-illuminated Emergency Stop Pushbutton Switch



1.30074.8210000



PANEL MOUNTING



PANEL THICKNESS
.02 - .20 (0.5 - 5.0)

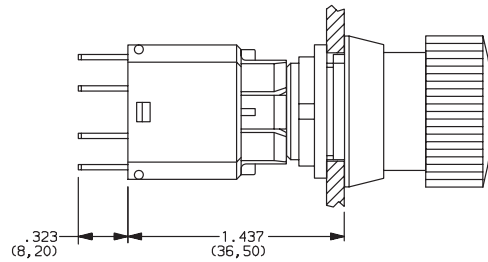
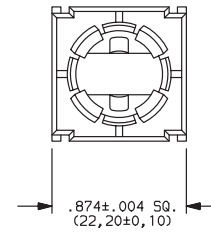
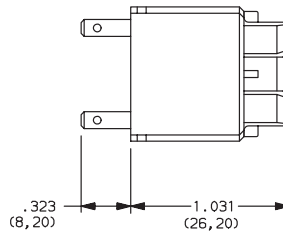
NON-ILLUMINATED SWITCH	
PART NUMBER	COLLAR COLOR
1.30074.8210000	Yellow

Emergency Stop Pushbutton Switches with Universal Contact Block

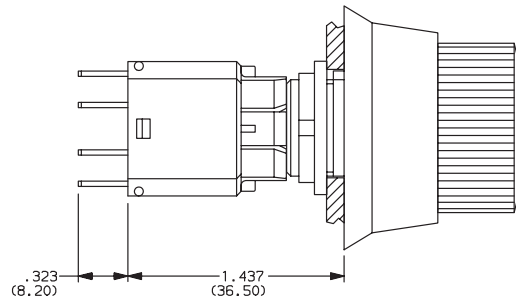


1.20123.0210000

1 N.C. + 1 N.O.



Contact Block with
Emergency Stop Pushbutton Switch



Contact Block with
Emergency Stop Pushbutton Switch

UNIVERSAL CONTACT BLOCK			
PART NUMBER	FUNCTION	MATERIAL/ CONTACT RATING	CONTACT ARRANGEMENT
1.20123.0210000	Momentary	Silver 250 V/ 6 A (4 A)	1 N.C. & 1 N.O.
1.20123.0220000			1 N.C.
1.20123.0230000			1 N.O.
1.20123.0240000			2 N.C.
1.20123.0250000			2 N.O.
1.20123.0310000	Momentary	Gold 42 V/ 250 mA	1 N.C. & 1 N.O.
1.20123.0320000			1 N.C.
1.20123.0330000			1 N.O.
1.20123.0340000			2 N.C.
1.20123.0350000			2 N.O.