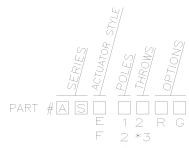


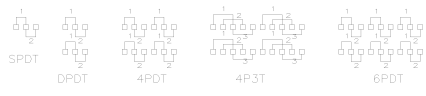
THIS DRAWING IS UNCLASSIFIED
 UNLESS INDICATED OTHERWISE
 © 2015 Tyco Electronics Corporation ALL RIGHTS RESERVED



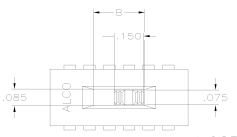
EXTENDED ACTUATOR
 FLUSH ACTUATOR
 THROW AVAILABLE
 IN 4 POLE ONLY
 SIDE ACTUATOR
 BLACK ACTUATOR
 SMT TERMINAL
 CONFIGURATION
 'L' CONFIGURATION
 TR = TAPE AND REEL PACKAGED

SWITCH NO.	DIM A	DIM B	DIM C	DIM D
AS* - 43****	1.100	.360	.900	.230
AS* - 62****	1.000	.260	.800	.230
AS* - 42****	.700	.260	.500	.230
AS* - 22****	.400	.260	.200	.105
AS* - 12****	.400	.260	.200	.105

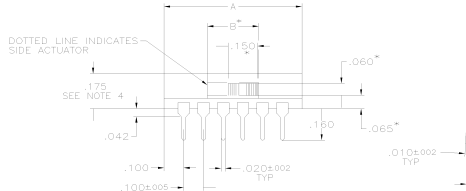
* = OPTIONS (SEE CHART)



CIRCUIT DIAGRAMS



* SIDE ACTUATOR ONLY.



ASF

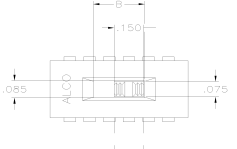
SPECIFICATIONS:

MATERIAL:
 BASE COVER: RYNITE
 MOVABLE CONTACT: BERYLLIUM COPPER
 FIXED CONTACT/TERMINAL: COPPER ALLOY
 PLATING: GOLD .00030" OVER NICKEL
 SILVER: .000050" OVER NICKEL FLASH.

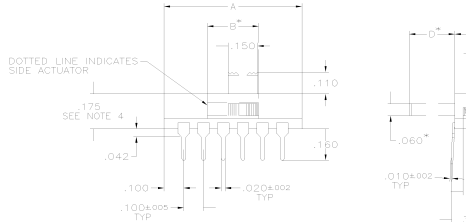
ELECTRICAL:
 CONTACT RATING: SILVER: 300 MILLIAMPS @ 115 VAC.
 GOLD: 0.4 VA 50 VDC
 CONTACT RESISTANCE: INITIAL 40 MILLIOHMS MAX.
 INSULATION RESISTANCE: 1000 MEGOHMS MAX.
 DIELECTRIC STRENGTH: 600 VOLTS RMS AT SEA LEVEL.
 LIFE EXPECTANCY: 15,000 CYCLES MIN.

ENVIRONMENTAL:
 OPERATING TEMPERATURE: -40°F TO +175°F (-40°C TO +80°C)
 HIGH TEMPERATURE RESISTANCE: WILL WITHSTAND VAPOR PHASE
 REFLOW AND WAVE SOLDERING PROCESSES.
 PROCESS CLEANING: WILL WITHSTAND AQUEOUS OR SOLVENT
 CLEANING PROCESSES.

- NOTES: UNLESS OTHERWISE SPECIFIED
1. ALL SWITCHES HAVE OPEN ENDS EXCEPT TOP FLUSH ACTUATOR, WHICH COMES STANDARD WITH TAPE SEAL.
 2. TAPE AND REEL PER EIA 481 OR 22" ANTI-STATIC TUBES
 3. SAME AS ASF22LTR WITHOUT TAPE SEAL
 4. SOLDERABILITY PER EIA 364-52 CLASS 2 CATEGORY 1



* SIDE ACTUATOR ONLY.



ASE

PRINTED CIRCUIT BOARD HOLE PATTERN

REV	DATE	REVISIONS	BY	CHK	APP
AD	DO	REV PER 03-01-002-005	248495	RB	MS

Upright, Through Hole, Extended Actuator

Tyco P/N	T&B Model	Function
1437581-2	ASE22C	DPDT
1437581-4	ASE22C	DPDT
1-1437581-4	ASE42	4PDT
1-1437581-6	ASE42G	4PDT
2-1437581-5	ASE43	4P3T
2-1437581-6	ASE43G	4P3T
3-1437581-1	ASE42	4PDT
3-1437581-3	ASE42G	4PDT

Right Angle, Through Hole, Flush Actuator

Tyco P/N	T&B Model	Function
6-1437581-2	ASF22R	DPDT
7-1437581-3	ASF22RG	DPDT
7-1437581-3	ASF42R	4PDT
7-1437581-4	ASF42RG	4PDT
	ASF43R	4P3T
8-1437581-2	ASF43RG	4P3T
8-1437581-3	ASF62R	6PDT
9-1437581-1	ASF62RG	6PDT

Right Angle, Through Hole, Extended Actuator

Tyco P/N	T&B Model	Function
1437581-9	ASE22RG	DPDT
1-1437581-9	ASE42R	4PDT
2-1437581-2	ASE42RG	4PDT
2-1437581-9	ASE43R	4P3T
3-1437581-0	ASE43RG	4P3T
3-1437581-6	ASE62R	6PDT
3-1437581-7	ASE62RG	6PDT

Upright, Surface Mount "L" Type, Flush Actuator

Tyco P/N	T&B Model	Function
1571007-1	ASF22LR	DPDT
2-1437582-0	ASF71260	DPDT
5-1437581-1	ASF22L	DPDT
1571007-4	ASF22CLR	DPDT
7-1437581-1	ASF42L	4PDT
7-1437581-2	ASF42L	4PDT
8-1437581-0	ASF43L	4P3T
8-1437581-1	ASF43L	4P3T
8-1437581-7	ASF62L	6PDT
8-1437581-8	ASF62L	6PDT

Upright, Surface Mount "L" Type, Extended Actuator

Tyco P/N	T&B Model	Function
1437581-5	ASE22L	DPDT
1-1437581-7	ASE42L	4PDT
1-1437581-8	ASE42L	4PDT
2-1437581-7	ASE43L	4P3T
2-1437581-8	ASE43L	4P3T
3-1437581-4	ASE62L	6PDT
3-1437581-5	ASE62L	6PDT

Upright, Surface Mount "S" Type, Flush Actuator

Tyco P/N	T&B Model	Function
6-1437581-0	ASF22GS	DPDT
6-1437581-7	ASF22S	DPDT
1571007-2	ASF22STR	DPDT
	ASF42GS	4PDT
1571007-3	ASF42STR	4PDT
7-1437581-7	ASF42S	4PDT
	ASF43GS	4P3T
8-1437581-3	ASF43S	4P3T
	ASF62GS	6PDT
9-1437581-4	ASF62S	6PDT

Right Angle, Surface Mount "L" Type, Extended Actuator

Tyco P/N	T&B Model	Function
1437581-8	ASE22RL	DPDT
1-1437581-1	ASE42RL	4PDT
2-1437581-1	ASE42RL	4PDT
2-1437581-2	ASE42RL	4PDT
	ASE43RL	4P3T
	ASE43RL	4P3T
3-1437581-8	ASE62RL	6PDT
3-1437581-9	ASE62RL	6PDT

Right Angle, Surface Mount "L" Type, Flush Actuator

Tyco P/N	T&B Model	Function
6-1437581-4	ASF22L	DPDT
	ASF42L	4PDT
7-1437581-5	ASF42RL	4PDT
7-1437581-6	ASF42RL	4PDT
	ASF43RL	4P3T
9-1437581-2	ASF62RL	6PDT
	ASF62RL	6PDT

Right Angle, Surface Mount "S" Type, Extended Actuator

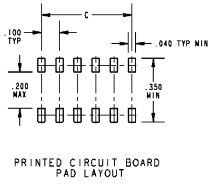
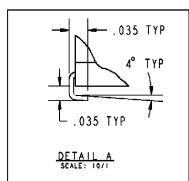
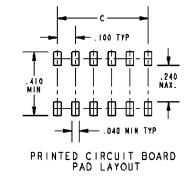
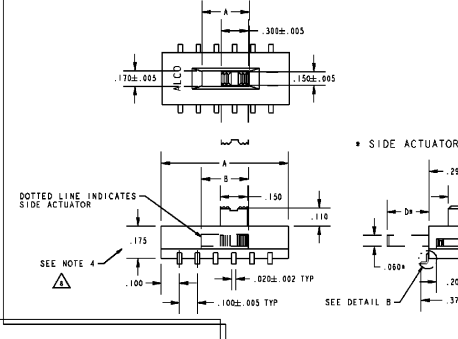
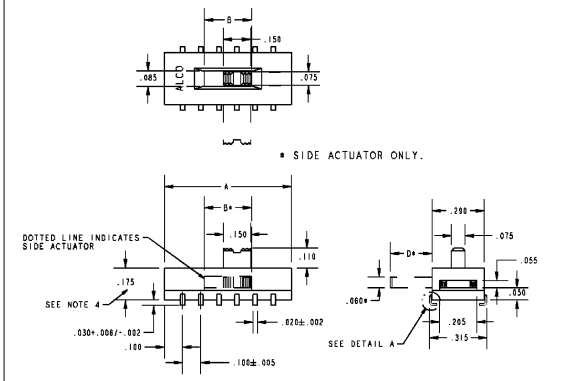
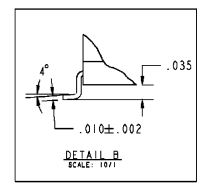
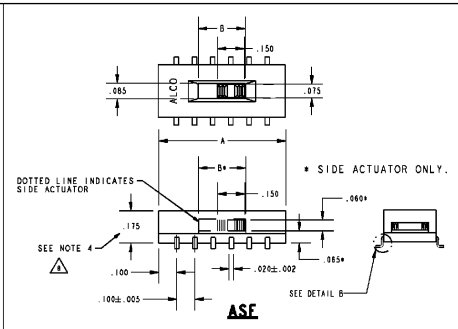
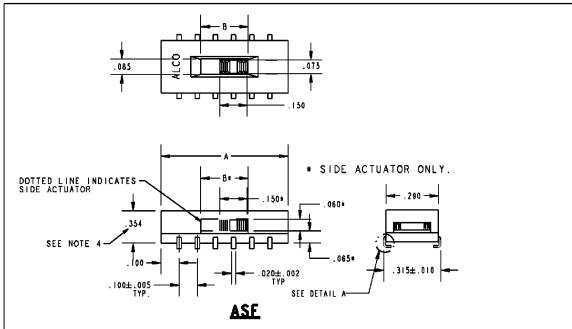
Tyco P/N	T&B Model	Function
1-1437581-0	ASE42RGS	4PDT
1-1437581-2	ASE42RGS	4PDT
	ASE42RGS	4PDT
2-1437581-3	ASE42RS	4PDT
	ASE42RS	4PDT
	ASE43RS	4P3T
	ASE43RS	4P3T
	ASE62RGS	6PDT
	ASE62RGS	6PDT

Right Angle, Surface Mount "S" Type, Flush Actuator

Tyco P/N	T&B Model	Function
6-1437581-5	ASF22RS	DPDT
6-1437581-6	ASF22RS	DPDT
	ASF42RS	4PDT
	ASF42RS	4PDT
	ASF43RS	4P3T
	ASF43RS	4P3T
9-1437581-3	ASF62RS	6PDT
	ASF62RS	6PDT

THIS DRAWING IS A CONTROLLED DOCUMENT

DESIGNATION	1437581-2	REV	DO
REV	DO	DATE	03-01-002-005
BY	AD	CHKD	MS
DATE	03-01-002-005	REV	DO
DESCRIPTION	SLIDE SWITCH ASE/ASF, AUTO-INSERTABLE, THRU-HOLE AND SURFACE MOUNT		
REV	DO	DATE	03-01-002-005
BY	AD	CHKD	MS
DATE	03-01-002-005	REV	DO
DESCRIPTION	SLIDE SWITCH ASE/ASF, AUTO-INSERTABLE, THRU-HOLE AND SURFACE MOUNT		
REV	DO	DATE	03-01-002-005
BY	AD	CHKD	MS
DATE	03-01-002-005	REV	DO
DESCRIPTION	SLIDE SWITCH ASE/ASF, AUTO-INSERTABLE, THRU-HOLE AND SURFACE MOUNT		



"L" TYPE SURFACE MOUNT

REVERSE "L" TYPE SURFACE MOUNT

THIS DRAWING IS A CONTROLLED DOCUMENT		REV	DATE	REVISIONS
DESIGNER	DATE	BY	CHK	APP
PROJ	NO	REV	DATE	BY
MATERIAL		REV	DATE	BY
CUSTOMER DRAWING		REV	DATE	BY