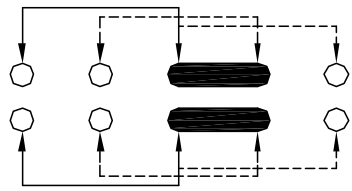
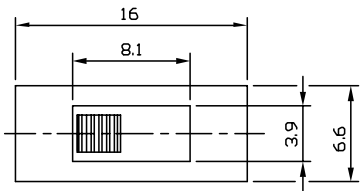
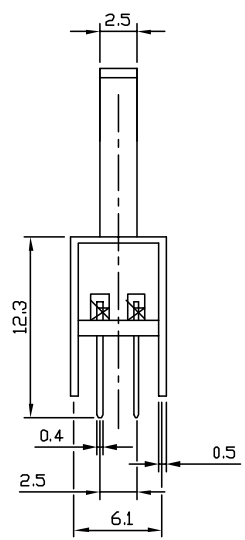
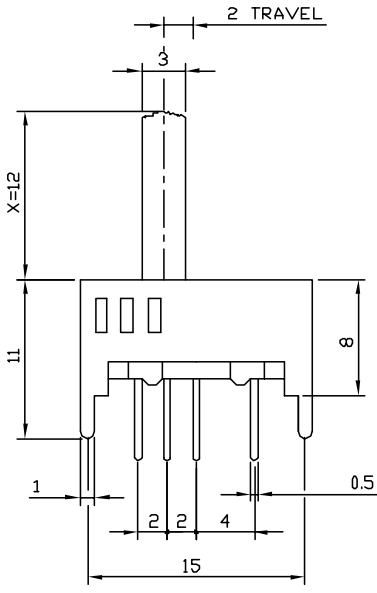


DWG. NO. SW-0830-A REV. 'A'

PART NO. SS-2301C




SCHEMATIC



- SPECIFICATIONS:
- 1. CIRCUIT: DP3T
  - 2. OPERATING FORCE: R→C←L: 150±50gf  
R←C→L: 200±50gf
  - 3. TIMING: NON-SPECIFIED
  - 4. TRAVEL: 2+2
  - 5. KNOB LENGTH X:
    - MODEL 2301: X=3
    - 2301A: X=6
    - 2301B: X=9
    - 2301C: X=12

NOTE:  
ALL DIMS ARE GIVEN IN MM.

PROJECTION		 Research Develop Innovate <small>RDI, Inc. 400 Columbus Avenue Valhalla, NY 10595</small>	
SCALE: NONE		TITLE: SLIDE SWITCH	
TOLERANCE EXCEPT AS NOTED	DR. JOEY	DATE 9/13/02	REF. P/N: SS-2301C
DEC. INCHES N/A	CK. SL	PRE-SW	DRAWING NO. 0830 SIZE A REV. -
DEC. MILLIMETERS ±0.3	THIS DOCUMENT IS OWNED BY, AND THE INFORMATION CONTAINED IN IT IS PROPRIETARY TO, RDI, BY RECEIPT HEREOF THE HOLDER AGREES NOT TO USE THE INFORMATION AND NOT TO DISCLOSE IT TO ANY THIRD PARTY, NOR REPRODUCE THIS DOCUMENT WITHOUT THE WRITTEN CONSENT OF RDI, AND AGREES TO RETURN THIS DOCUMENT FORTHWITH UPON REQUEST.		
ANG. ±3°			

ECN#	DATE	SYM	REVISION RECORD	AUTH	BY