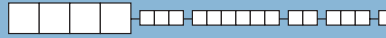
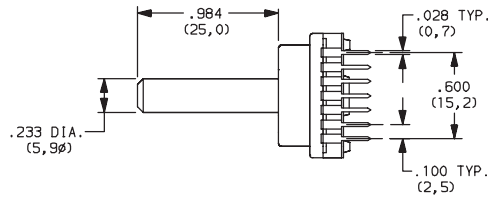
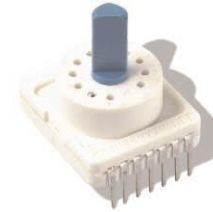
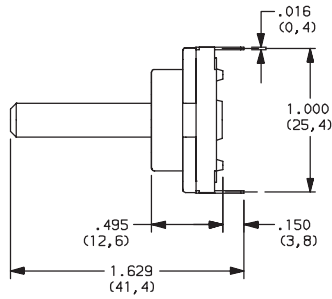
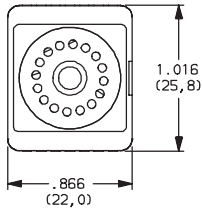


C&K RTA Series 1-4 Poles Coded Rotary Switches

DESIGNATION

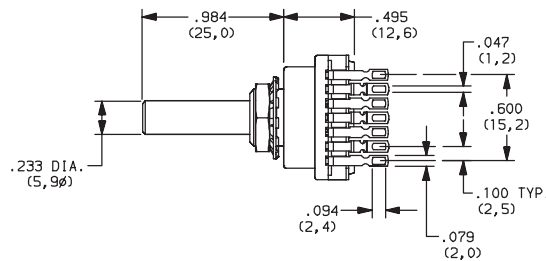
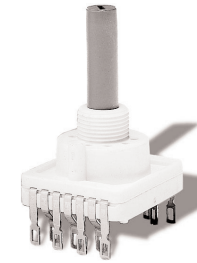
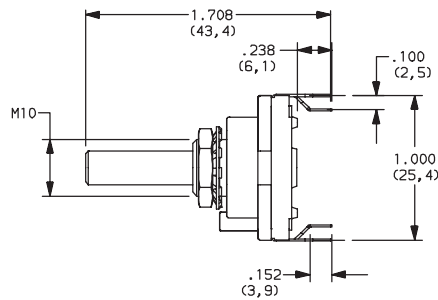
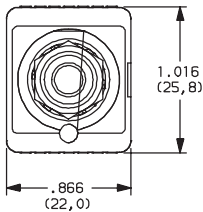


RTAP (STD.) WITH PC PINS

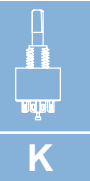


PART NUMBER	FUNCTION	INDEX
RTAP22.5BSSD25S	Binary	22.5
RTAP30112SSD25S	SP 12 positions no stop	30
RTAP36110SSD25S	SP 10 positions no stop	36

RTAC (STD.) WITH SOLDER LUGS



PART NUMBER	FUNCTION	INDEX
RTAC22.5BSAD25S	Binary	22.5
RTAC30112SAD25S	SP 12 positions no stop	30
RTAC36110SAD25S	SP 10 positions no stop	36



Rotary

INDEXING



22.5 (STD.) 22.5 index, 16 positions max.

30 (STD.) 30 index, 12 positions max.

36 (STD.) 36 index, 10 positions max.



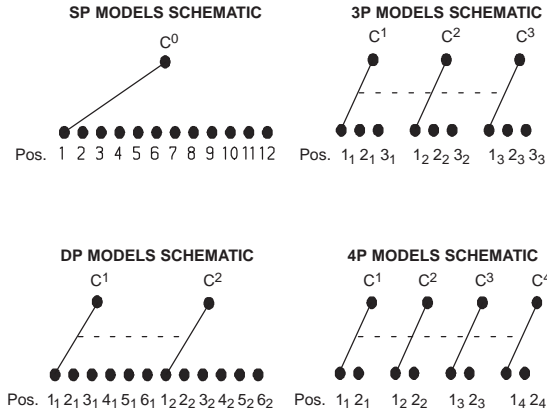
Third Angle
Projection

Dimensions are shown: IN (mm)
Dimensions subject to change

C&K RTA Series 1-4 Poles Coded Rotary Switches

SWITCH FUNCTION

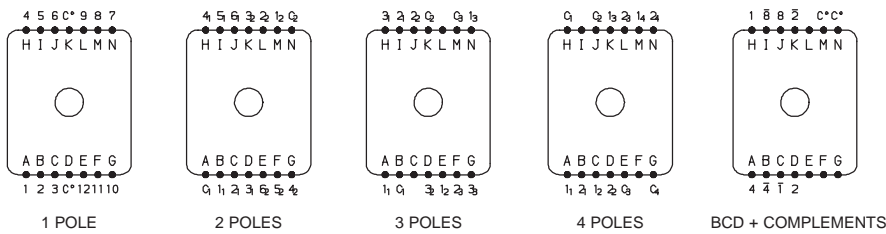
NO. POLES	MODEL NO.	SWITCH FUNCTION	INDEX
SP	112S	12 Positions No Stop	30°
	110S	10 Positions No Stop	36°
	102B02	2 Positions	30° / 36°
	103B03	3 Positions	30° / 36°
	104B04	4 Positions	30° / 36°
	105B05	5 Positions	30°
	106B06	6 Positions	30° / 36°
	107B07	7 Positions	30° / 36°
	108B08	8 Positions	30° / 36°
	109B09	9 Positions	30° / 36°
	110B10	10 Positions	30° / 36°
	111B11	11 Positions	30°
112B12	12 Positions	30°	



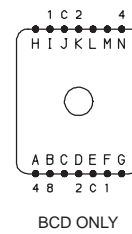
NO. POLES	MODEL NO.	SWITCH FUNCTION	INDEX
DP	206S	6 Positions No Stop	30°
	205S	5 Position No Stop	36°
	202B02	2 Positions	30° / 36°
	203B03	3 Positions	30° / 36°
	204B04	4 Positions	30° / 36°
	205B05	5 Positions	30° / 36°
	206B06	6 Positions	30°
3P	303S	3 Positions No Stop	30° / 36°
	302B02	2 Positions	30° / 36°
	303B03	3 Positions	30° / 36°
4P	402S	3 Positions No Stop	30° / 36°
	402B02	2 Positions	30° / 36°

22.5°	30°	36°		Pos.	1	2	3	4	5	6	7	8	9	10	11	12	13	14	15	16	
Term. E,J	Term. L,N	Term. M,N		C
F,I	D	H	1	
D,K	B	D	2		
A,N	I	A	4				
B	J	J	8								
—	K	C	1		
—	H	K	2				
—	A	B	4						
—	C	I	8								

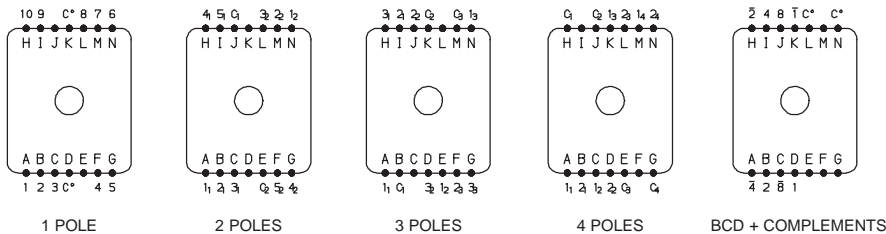
30 INDEXING ANGLE PCB LAYOUT



22.5 INDEXING ANGLE PCB LAYOUT



36 INDEXING ANGLE PCB LAYOUT

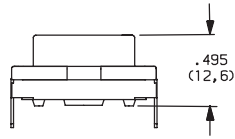


NOTE: Layout view from component side.

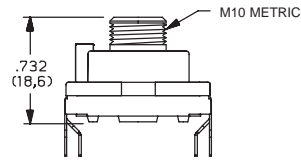
C&K RTA Series 1-4 Poles Coded Rotary Switches

MOUNTING STYLE

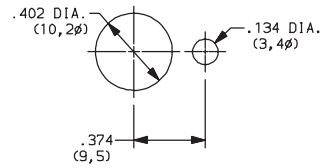
SD (STD.) WITHOUT BUSHING



AD (STD.) WITH BUSHING

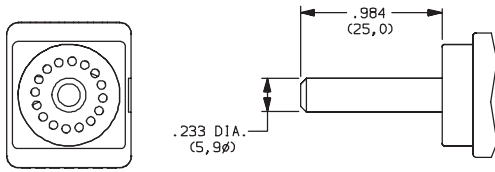


PANEL MOUNTING

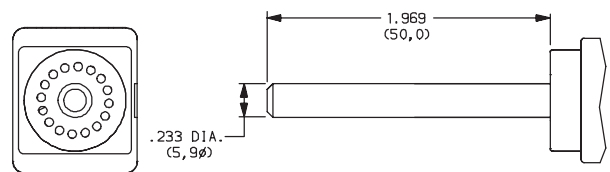


ACTUATOR

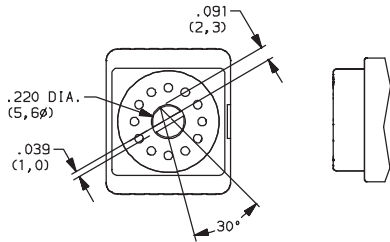
25 (STD.) 0,25 mm (.984)



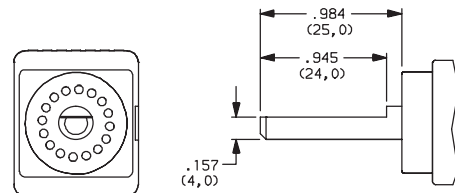
50 0,50 mm (1.97)



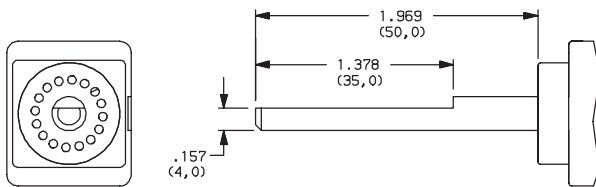
F (STD.) SCREWDRIVER SLOT



M25 FLAT SHAFT



M50 FLAT SHAFT



CONTACT MATERIAL

OPTION CODE	CONTACT AND TERMINAL MATERIAL	RATINGS	
S (STD.)	SILVER	LOW LEVEL/DRY CIRCUIT	SWITCH: 150 mA maximum, 60 V nominal. POWER: 5 VA maximum. CARRY: 5 AMPS maximum.
G	GOLD	LOW LEVEL/DRY CIRCUIT OR POWER	SWITCH: 20 mA maximum, 25 V nominal. POWER: 0.5 VA maximum. CARRY: 1 AMP maximum.



Dimensions are shown: IN (mm)
Dimensions subject to change