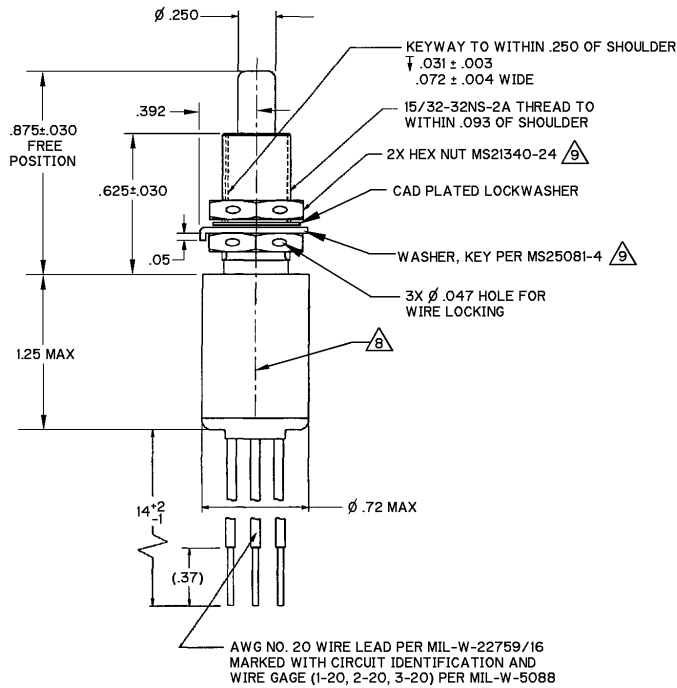


MICRO SWITCH
a Honeywell Division

SWITCH-ENCLOSED

CATALOG LISTING
HS-1021
CUSTOMER PART NUMBER

FED. WFS. CODE 81929

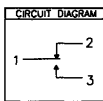


NOTES

- 1 - THE SWITCH WILL SELF ADJUST TO THE PROPER RELATIONSHIP WITH THE ACTUATOR UPON COMPLETION OF THE FIRST CYCLE. THIS RELATIONSHIP WILL REMAIN CONSTANT UNTIL THE ACTUATOR HAS A GROSS CHANGE IN DISPLACEMENT. THE SWITCH MAY BE REINSTALLED TO THE NEW OR OLD ACTUATOR DISPLACEMENT AND ONCE AGAIN IT WILL SELF ADJUST TO THE PROPER RELATIONSHIP
- 2 - CORROSION RESISTANT STEEL ENCLOSURE, BUSHING AND PLUNGER
- 3 - SWITCH SEALED PER MIL-PRF-8805 SYMBOL 4
- 4 - SHOCK PER MIL-PRF-8805 SYMBOL M
- 5 - VIBRATION PER MIL-PRF-8805 GRADE 1
- 6 - MINIMUM MECHANICAL LIFE: 100,000 CYCLES
- 7 - MINIMUM ELECTRICAL LIFE: 25,000 CYCLES AT RATED LOAD
- 8 - PRINT CIRCUIT DIAGRAM, FED. MFG. CODE, CATALOG LISTING AND DATE CODE
- 9 - HARDWARE MAY BE PACKAGED UNASSEMBLED PER MIL-PRF-8805
- 10 - INITIAL OPERATION OF THE SWITCH WILL OCCUR WITHIN THE PRETRAVEL SPECIFICATION AND RELEASE PER THE CLICK DISTANCE SPECIFICATION. CLICK DISTANCE IS THE DISTANCE THE PLUNGER RETURNS FROM THE DOWNWARD STROKE TO THE POINT OF CIRCUIT TRANSFER
- 11 - INSTALLATION OF THE SWITCH SHOULD DEPRESS THE PLUNGER A MINIMUM OF THE SUM OF THE PRETRAVEL AND THE CLICK DISTANCE. IF THE PLUNGER TRAVEL IS LESS THAN THIS SUM, THE CLICK DISTANCE WILL BE EQUAL TO THE PLUNGER TRAVEL MINUS THE PRETRAVEL MINUS APPROXIMATELY .010 INCHES

CATALOG LISTING
HS-1021
 ISSUE 2
 M
 PAGE 1 OF 1
 RELEASE NO. 200784
 REPLACES
 CHECK
 REVISIONS
 A 200936
 30 JUL 50
 CHECK
 S A V 17 JUL 00
 CHECK
 C S L 17 JUL 00
 DRAWN
 FORMTEK

THIS DRAWING COVERS A PROPRIETARY ITEM AND IS THE PROPERTY OF MICRO SWITCH, A DIVISION OF HONEYWELL. THIS DRAWING IS NOT TO BE COPIED OR USED WITHOUT THE APPROVAL OF MICRO SWITCH		THIRD ANGLE PROJECTION
CHARACTERISTICS		SCALE NONE
PRETRAVEL-----	.040 MAX	DO NOT SCALE PRINT
OPERATING FORCE-----	2.5 - 10 LBS	UNLESS OTHERWISE SPECIFIED TOLERANCES ARE
TOTAL TRAVEL-----	.125 MIN	ONE PLACE (.01) ± .030
CLICK DISTANCE-----	.100 MIN	TWO PLACE (.001) ± .015
RELEASE FORCE-----	2 LB MIN	THREE PLACE (.000) ± .005
ACTUATOR FORCE-----	17 LB MAX	ANGLES ± 4°
ELECTRICAL DATA		WEIGHT
CONTACT ARRANGEMENT		
SPDT		
(SILVER CONTACTS)		
LOAD (AMPS)	SEA LEVEL	50,000 FT
	28 VDC	
RES	7	4
IND	4	2.5
MOTOR	4	



ANSI Y14.5M-1982 APPLIES