

YM Series 4 Tumbler Miniature Switchlocks

Features/Benefits

- Snap-together assembly allows for pre-wiring of switch
- Wire lead terminations available
- 4 Tumbler lock with positive detent

Typical Applications

- Cable TV connectors
- Automotive accessories
- Computers



Specifications

CONTACT RATING: Q contact material: 4 AMPS @ 125 V AC or 28 V DC; 2 AMPS @ 250 V AC (UL/CSA). 4 AMPS @ 125 V AC, 2 AMPS @ 250 V AC, T65, class 1 (VDE). See page M-17 for additional ratings.

ELECTRICAL LIFE: 10,000 make-and-break cycles at full load.

CONTACT RESISTANCE: Below 10 m Ω typ. initial @ 2-4 V DC, 100 mA.

INSULATION RESISTANCE: 10⁹ Ω min.

DIELECTRIC STRENGTH: 1,000 Vrms min. @ sea level.

INDEXING: 90°:2 positions.

Materials

LOCK: Zinc alloy with stainless steel facing. 4 tumbler single bitted lock with integral detent mechanism.

KEYS: Two nickel plated brass keys with code number.

SWITCH HOUSING: 6/6 Nylon (UL 94V-2).

CONTACTS & TERMINALS: Q contact material: Copper, silver plated. See page L-17 for additional contact materials.

MOUNTING NUT: Brass, bright zinc plated.

NOTE: Any models supplied with Q or B contact material are RoHS compliant.

NOTE: Specifications and materials listed above are for switchlocks with standard options. For information on specific and custom switchlocks, consult Customer Service Center.

Build-A-Switch

To order, simply select desired option from each category and place in the appropriate box. Available options are shown and described on pages L-16 and L-17. For additional options not shown in catalog, consult Customer Service Center.

<p>Switch and Lock Function</p> <p>YM0613 SPST, 90° Index, keypull pos. 1</p> <p>YM061U SPST, 90° Index, keypull pos. 1 & 2</p> <p>Keying</p> <p>2 Two nickel plated brass keys</p> <p>Lock Type</p> <p>C 4 Tumbler, single bitted lock with detent</p> <p>Lock Finish</p> <p>2 Stainless steel facing</p> <p>8 Gloss black facing</p> <p>Terminations</p> <p>05 Quick connect</p> <p>WC Wire lead</p>	<p>Mounting Style</p> <p>N With nut</p> <p>Contact Material</p> <p>Q Silver</p> <p>B Gold</p>
---	--



YM Series 4 Tumbler Miniature Switchlocks

NO. POLES	MODEL NO.	SWITCH FUNCTION		KEY PULL POSITIONS	LOCK CONFIGURATION	INDEXING	SCHEMATIC
		POS. 1	POS. 2				
SP	YM0613	OFF	ON	Position 1		90°	
	YM061U			Positions 1 & 2			




SPST

Technical drawing of the SPST switch showing front, side, and end views with dimensions in inches and millimeters.

- Front View:** Shows a circular switch with a central plunger. Dimensions: .592 DIA (15,04 ϕ), POS. 1, POS. 2.
- Side View:** Shows the switch body with a mounting nut. Dimensions: 2.458 (62,43), 1.336 (33,93), .202 (5,13), .485 (12,32), .270 TYP (6,86), .110 x .032 (2,79) x (0,79) TYP.
- End View:** Shows the switch body with a mounting nut. Dimensions: .415 (10,54).

Part number shown: YM0613C205NQ

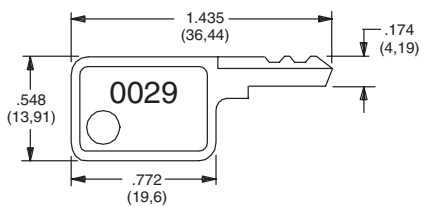
(MOUNTING NUT INCLUDED)

All models    with all options when ordered with 'Q' contact material.

LEGEND

- = Detent Positions (90°)
- ⊙ = Key pull possible in these positions
- ⦿ = Stop Positions

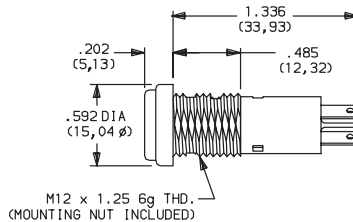
2 TWO NICKEL PLATED BRASS KEYS



Key part number: 119091029

NOTE: All orders keyed alike with code number on key. For more than one key code, replacement keys, or other special features, consult Customer Service Center.

C 4 TUMBLER SINGLE BITTED LOCK WITH DETENT



2 STAINLESS STEEL FACING

8 GLOSS BLACK FACING



Third Angle Projection

Dimensions are shown: Inch (mm)

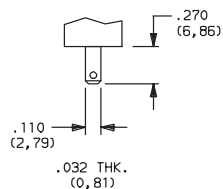
Specifications and dimensions subject to change

www.ck-components.com

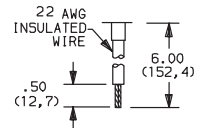
YM Series 4 Tumbler Miniature Switchlocks

TERMINATIONS

05 QUICK CONNECT



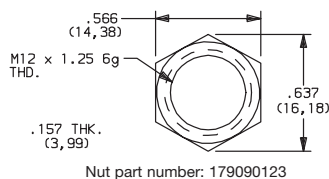
WC WIRE LEAD



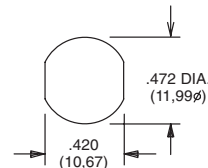
Black wire standard, other colors and lengths available, consult Customer Service Center. UL style 1015.

MOUNTING STYLE

N WITH NUT



PANEL MOUNTING



Panel thickness:
.300 (7,62) max.

CONTACT MATERIAL

OPTION CODE	RoHS COMPLIANT*	RoHS COMPATIBLE*	CONTACT AND TERMINAL MATERIAL	RATING	
Q	YES	YES	SILVER ²	POWER	4 AMPS @ 125 V AC or 28 V DC; 2 AMPS @ 250 AC V AC (UL/CSA).
B	YES	YES	GOLD ¹	LOW LEVEL/DRY CIRCUIT	0.4 VA MAX. @ 20 V AC or DC MAX.

* Note: See Technical Data section of this catalog for RoHS compliant and compatible definitions and specifications.

¹ CONTACTS & TERMINALS: Copper, with gold plate over nickel plate.

² CONTACTS & TERMINALS: Copper, silver plated (standard with all termination options).

All models    with all options when ordered with 'Q' contact material.

AVAILABLE HARDWARE



Key Code: 0029

PART NO. (ONE KEY)

960B10029

Material: Brass
Finish: Nickel plate



Dimensions are shown: Inch (mm)
Specifications and dimensions subject to change

www.ck-components.com



Switchlock