



# Y Series 4, 5 & 6 Tumbler Switchlocks

## SWITCH AND LOCK FUNCTION



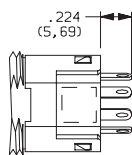
| SINGLE & DOUBLE POLE SWITCHES           |           |                                |                     |                 |                 |                 |                       |                    |             |
|---|-----------|--------------------------------|---------------------|-----------------|-----------------|-----------------|-----------------------|--------------------|-------------|
| NO. TUMBLERS                            | NO. POLES | MODEL NO.                      | CONNECTED TERMINALS |                 |                 |                 | KEY PULL POSITIONS    | LOCK CONFIGURATION | INDEXING    |
|   |           |                                | POS. 1              | POS. 2          | POS. 3          | POS. 4          |                       |                    |             |
| 4, 5 & 6                                | SP        | <b>Y10013</b>                  | 8-1                 | 1-2             | 2-3             |                 | Position 1            |                    | 45°         |
| 4, 5 & 6                                | SP DP     | <b>Y1001U</b><br><b>Y2001U</b> | 8-1<br>8-1, 4-5     | 1-2<br>1-2, 5-6 | 2-3<br>2-3, 6-7 |                 | Positions 1 & 3       |                    |             |
| 4 & 5                                   | SP DP     | <b>Y10082</b><br><b>Y20082</b> | 8-1<br>8-1, 4-5     | 1-2<br>1-2, 5-6 | 7-8<br>7-8, 3-4 |                 | Position 1            |                    |             |
| 4                                       | SP DP     | <b>Y100AA</b><br><b>Y200AA</b> | 8-1<br>8-1, 4-5     | 1-2<br>1-2, 5-6 | 7-8<br>7-8, 3-4 |                 | Positions 1, 2 & 3    |                    |             |
| 4                                       | SP DP     | <b>Y100AB</b><br><b>Y200AB</b> | 8-1<br>8-1, 4-5     | 1-2<br>1-2, 5-6 | 2-3<br>2-3, 6-7 | 3-4<br>3-4, 7-8 | Positions 1, 2, 3 & 4 |                    | 90°         |
| 4, 5 & 6                                | SP DP     | <b>Y10113</b><br><b>Y20113</b> | 8-1<br>8-1, 4-5     | 1-3<br>1-3, 5-7 |                 |                 | Position 1            |                    |             |
| 4 & 5                                   | SP DP     | <b>Y1011C</b><br><b>Y2011C</b> | 8-1<br>8-1, 4-5     | 1-3<br>1-3, 5-7 |                 |                 | Position 2            |                    |             |
| 4, 5 & 6                                | SP DP     | <b>Y1011U</b><br><b>Y2011U</b> | 8-1<br>8-1, 4-5     | 1-3<br>1-3, 5-7 |                 |                 | Positions 1 & 2       |                    |             |
| 4                                       | SP        | <b>Y14173</b>                  | 7-1                 | 1-3             | 6-7             |                 | Position 1            |                    | 90°         |
| 4                                       | SP        | <b>Y1417U</b>                  | 7-1                 | 1-3             | 6-7             |                 | Positions 1, 2 & 3    |                    |             |
| SINGLE & DOUBLE POLE MOMENTARY SWITCHES |           |                                |                     |                 |                 |                 |                       |                    |             |
| NO. TUMBLERS                            | NO. POLES | MODEL NO.                      | CONNECTED TERMINALS |                 |                 |                 | KEY PULL POSITIONS    | LOCK CONFIGURATION | INDEXING    |
|   |           |                                | POS. 1              | POS. 2          | POS. 3          | POS. 4          |                       |                    |             |
| 4                                       | SP DP     | <b>Y10812</b><br><b>Y20812</b> | 8-1<br>8-1, 4-5     | 1-2<br>1-2, 5-6 |                 |                 | Position 1            |                    | 45°<br>Mom. |



Switchlock

### LEGEND

- ▲ = Momentary Positions (45°)
- = Detent Positions (45° or 90°)
- ⊙ = Key pull possible in these positions.
- ↑ = Stop Positions

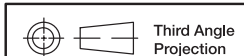


### TERMINAL NUMBERS



Terminal numbers molded on bottom of housing.

All models with all options when ordered with 'G' or 'Q' contact material.



Dimensions are shown: Inch (mm)  
Specifications and dimensions subject to change



# Y Series 4, 5 & 6 Tumbler Switchlocks

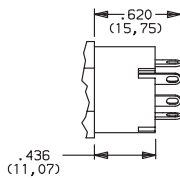
## SWITCH AND LOCK FUNCTION



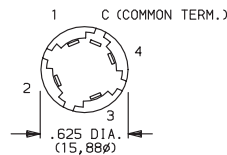
| SINGLE POLE SWITCHES WITH COMMON |           |           |                     |        |        |        |                       |                    |          |
|----------------------------------|-----------|-----------|---------------------|--------|--------|--------|-----------------------|--------------------|----------|
| NO. TUMBLERS                     | NO. POLES | MODEL NO. | CONNECTED TERMINALS |        |        |        | KEY PULL POSITIONS    | LOCK CONFIGURATION | INDEXING |
|                                  |           |           | POS. 1              | POS. 2 | POS. 3 | POS. 4 |                       |                    |          |
| 4                                | SP        | Y19073    | C-1                 | C-2    | C-4    |        | Position 1            | 90°                |          |
|                                  |           | Y1907U    |                     |        |        |        | Positions 1, 2 & 3    |                    |          |
|                                  |           | Y1900S    | C-1                 | C-2    | C-3    | C-4    | Positions 1, 2, 3 & 4 |                    |          |

### LEGEND

- = Detent Positions (45° or 90°)
- ⊙ = Key pull possible in these positions.
- = Stop Positions



### TERMINAL NUMBERS

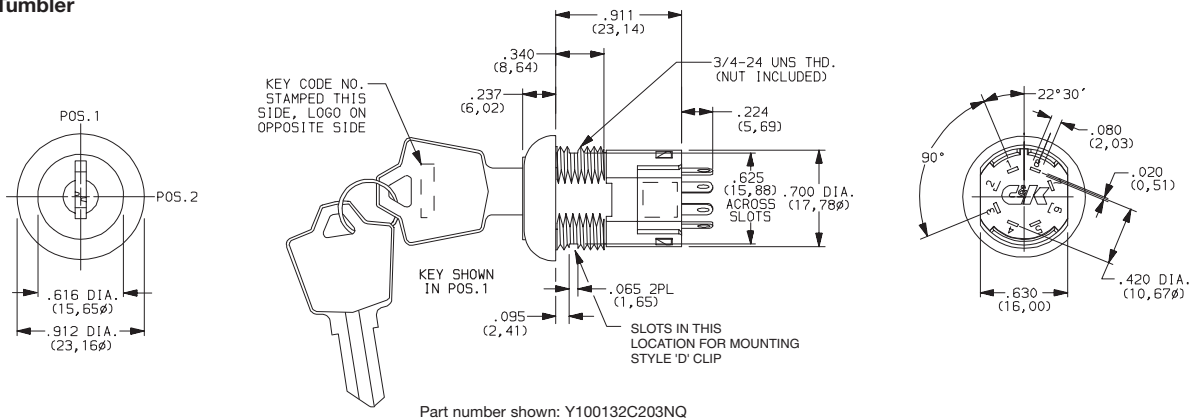


Terminal numbers marked on insulator.

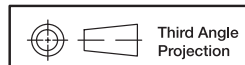
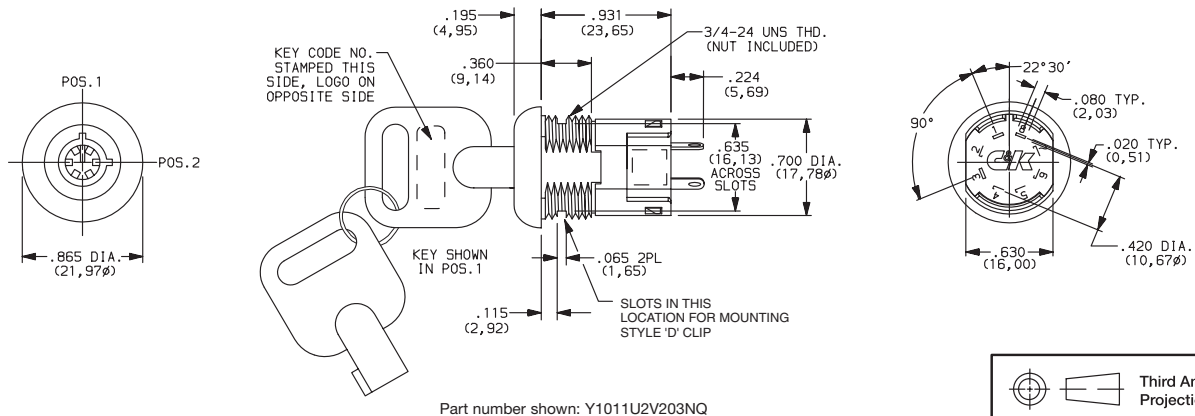
All models with all options when ordered with 'G' or 'Q' contact material.

**NOTE:** Epoxy seal not available. Removable dress nut not available with any Y190XX models.

### 4 & 5 Tumbler



### 6 Tumbler



Third Angle Projection

Dimensions are shown: Inch (mm)  
Specifications and dimensions subject to change



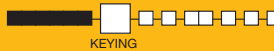
# Y Series 4, 5 & 6 Tumbler Switchlocks

## SWITCH AND LOCK FUNCTION



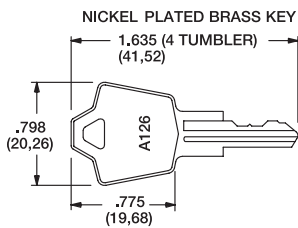
| AVAILABLE OPTION COMBINATIONS |            |   |   |   |   |   |              |    |    |    |    |                      |   |   |   |
|-------------------------------|------------|---|---|---|---|---|--------------|----|----|----|----|----------------------|---|---|---|
| MODELS                        | LOCK TYPES |   |   |   |   |   | TERMINATIONS |    |    |    |    | MOUNTING/LOCK STYLES |   |   |   |
|                               | A          | B | C | R | V | W | 01           | 02 | 03 | 07 | WC | D                    | L | N | R |
| YX0013                        |            | • | • |   | • | • | •            | •  | •  |    | •  | •                    |   | • | • |
| YX001U                        |            | • | • | • | • | • | •            | •  | •  |    | •  | •                    | • | • | • |
| YX0082                        |            | • | • | • |   |   | •            | •  | •  |    | •  | •                    |   | • |   |
| YX00AX                        |            |   | • | • |   |   | •            | •  | •  |    | •  | •                    |   | • | • |
| YX0113                        |            | • | • | • | • | • | •            | •  | •  |    | •  | •                    |   | • | • |
| YX011C                        |            | • | • | • |   |   | •            | •  | •  |    | •  | •                    |   | • | • |
| YX01IU                        |            | • | • | • | • | • | •            | •  | •  |    | •  | •                    | • | • | • |
| Y141XX                        |            |   | • | • |   |   | •            | •  | •  |    | •  | •                    |   | • | • |
| YX0812                        | •          |   |   |   |   |   | •            | •  | •  |    | •  | •                    |   | • | • |
| Y190XX                        |            |   | • | • |   |   |              | •  |    | •  | •  | •                    |   | • |   |

## KEYING

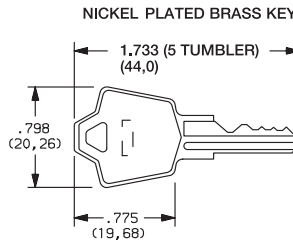


| OPTION CODE | KEYING OPTIONS   | CODE NO. ON KEY | CODE NO. ON LOCK |
|-------------|--|-----------------|------------------|
| 2           | 2 NICKEL PLATED BRASS KEYS (4 & 5 TUMBLER) or 2 DIE CAST CHROME PLATED ZINC ALLOY KEYS (6 TUMBLER) | YES             | NO               |
| 6           | 2 NICKEL PLATED BRASS KEYS, 4 & 5 TUMBLER ONLY   | YES             | YES              |

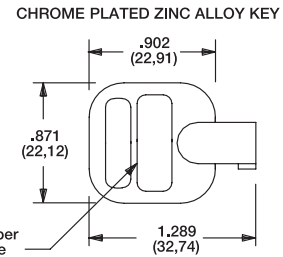
NOTE: All orders keyed alike, standard. For more than one key code, master keying, replacement keys, or other special features, consult Customer Service Center.



Key part number: 115140126



Key part number: 115441001



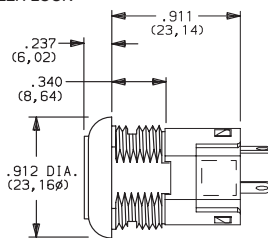
Key part number: 363C1AAAA

NOTE: Keys are available separately, see page L-10. Key head shape subject to change without notice.

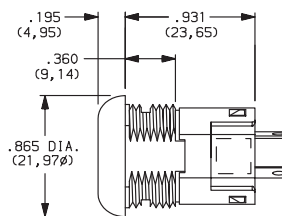
## LOCK TYPE



**C** 4 TUMBLER LOCK WITH DETENT

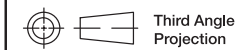
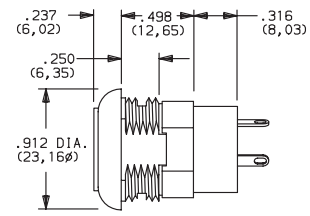


**V** 6 TUMBLER TUBULAR LOCK



Available with Lock Finish '2' only

**A** 4 TUMBLER LOCK (MOMENTARY MODELS ONLY)



Dimensions are shown: Inch (mm)

Specifications and dimensions subject to change



www.ck-components.com

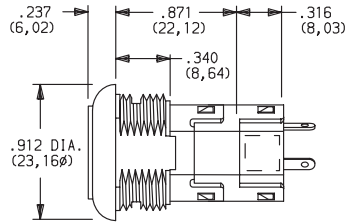


# Y Series 4, 5 & 6 Tumbler Switchlocks

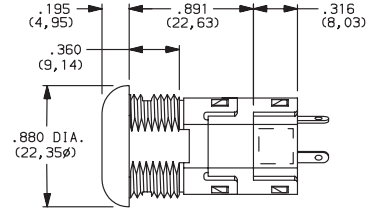
## LOCK TYPE

### SHORT ANTI-STATIC LOCK TYPES

**R** 4 TUMBLER LOCK WITH DETENT AND SHORT ANTI-STATIC SWITCH.



**W** 6 TUMBLER TUBULAR LOCK WITH ANTI-STATIC SWITCH



Available with Lock Finish '2' only.

**NOTE:** For available option combinations, see page L-9.  
U.S. Pat. No. 4,639,562 Exceeds 20 KV DC static resistance @ sea level, lock body to terminals.

## LOCK FINISH

**2** STAINLESS STEEL



**8** GLOSS BLACK



**F** POLISHED NICKEL

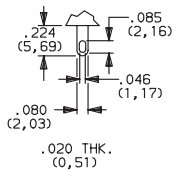


Available with Lock Types 'V' & 'W' only.

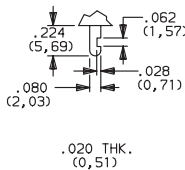
**NOTE:** For available option combinations, see page L-9.

## TERMINATIONS

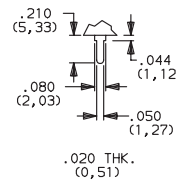
**03** SOLDER LUG WITH HOLE



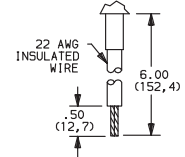
**01** SOLDER LUG WITH NOTCH



**02** PC THRU-HOLE



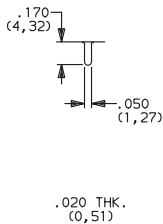
**WC** WIRE LEAD



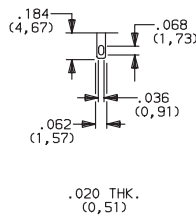
Black wire standard. other colors and lengths available, consult Customer Service Center. UL style 1015.

### All Models Except Y190

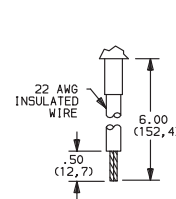
**02** PC THRU-HOLE



**07** SOLDER LUG WITH HOLE



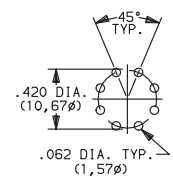
**WC** WIRE LEAD



Black wire standard. other colors and lengths available, consult Customer Service Center. UL style 1015.

### Y190 Model Only

### PC MOUNTING



Dimensions are shown: Inch (mm)  
Specifications and dimensions subject to change

www.ck-components.com



Switchlock

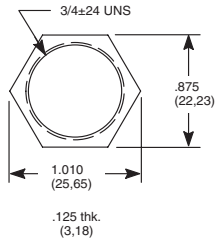


# Y Series 4, 5 & 6 Tumbler Switchlocks

## MOUNTING/LOCK STYLE

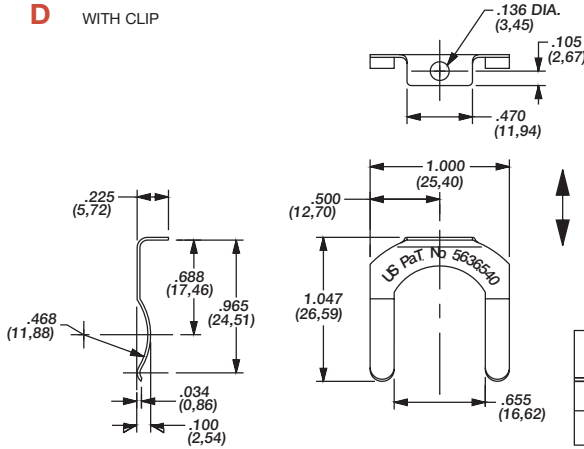


**N** WITH NUT



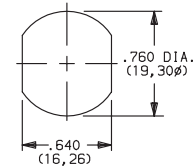
Nut part number: 175050700

**D** WITH CLIP



Clip part number: 906B00000

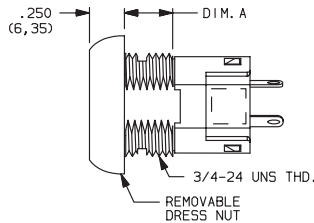
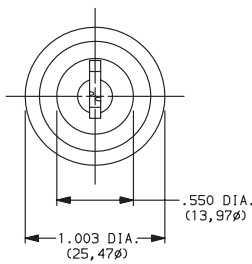
PANEL MOUNTING



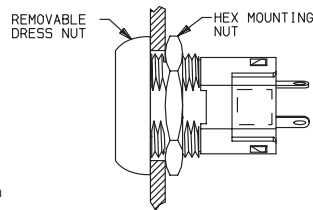
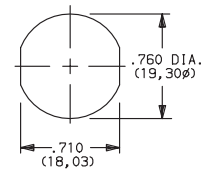
GRAIN DIRECTION  
BURR SIDE UP

| OPTION CODE | MOUNTING STYLE | PANEL THICKNESS       |
|-------------|----------------|-----------------------|
| N           | WITH NUT       | .085-.105 (2,16-2,67) |
| D           | WITH CLIP      | .085-.105 (2,16-2,67) |

**R** REMOVABLE DRESS NUT



PANEL MOUNTING



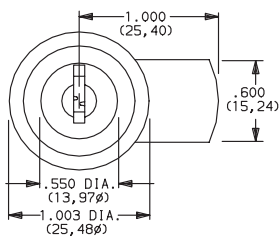
| LOCK DIMENSIONS |                |
|-----------------|----------------|
| LOCK TYPES      | DIMENSIONS 'A' |
| A, N            | .270 (6,68)    |
| C, R            | .360 (9,14)    |

### TYPICAL INSTALLATION

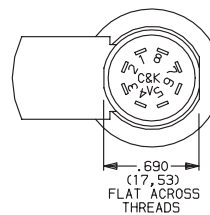
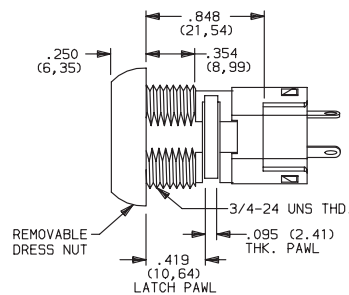
Install hex nut with enough clearance to allow for dress nut and panel. Place switch through cutout in rear of panel. Install and tighten dress nut by hand, then tighten hex nut. Always tighten assembly with back of panel hex nut to avoid damaging front of panel.

**NOTE:** Removable dress nut not available with Y1900A or Y100AA model options.

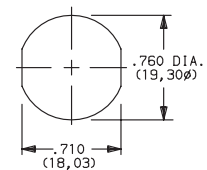
**L** REMOVABLE DRESS NUT WITH LATCH PAWL



Latch pawl shown in pos. 1.



PANEL MOUNTING



Switchlock



Third Angle Projection  
Dimensions are shown: Inch (mm)  
Specifications and dimensions subject to change

**C&K**

# Y Series 4, 5 & 6 Tumbler Switchlocks

## MOUNTING/LOCK STYLE

### Mounting Information (All Models)

| PANEL THICKNESS |                         |                   |                         |
|-----------------|-------------------------|-------------------|-------------------------|
| MOUNTING STYLES | A, B LOCK TYPES         | C, R LOCK TYPES   | V, W LOCK TYPES         |
| D               | .065-.085 (1, 65-2, 16) |                   | .085-.105 (2, 16-2, 67) |
| N               | .105 (2, 67) max.       | .195 (4, 95) max. | .215 (5, 46) max.       |
| L               | .215 (5, 46) max.       |                   | -                       |
| R               | .125 (3, 18) max.       | .215 (5, 46) max. | -                       |

| AVAILABLE OPTION COMBINATIONS |               |   |   |            |   |   |   |   |   |
|-------------------------------|---------------|---|---|------------|---|---|---|---|---|
| MOUNTING STYLES               | LOCK FINISHES |   |   | LOCK TYPES |   |   |   |   |   |
|                               | 2             | 8 | F | A          | B | C | R | V | W |
| D                             | ●             | ● | ● | ●          | ● | ● | ● | ● | ● |
| N                             | ●             | ● | ● | ●          | ● | ● | ● | ● | ● |
| R                             |               | ● | ● | ●          |   | ● | ● |   |   |
| L                             |               | ● | ● |            |   | ● | ● |   |   |

## CONTACT MATERIAL



| OPTION CODE | RoHS COMPLIANT* | RoHS COMPATIBLE* | CONTACT AND TERMINAL MATERIAL | RATING                            |   |
|-------------|-----------------|------------------|-------------------------------|-----------------------------------|---|
| <b>Q</b>    | YES             | YES              | SILVER <sup>2</sup>           | POWER                             | 4 AMPS @ 125 V AC or 28 V DC;<br>2 AMPS @ 250 AC V AC (UL/CSA).                                 |
| <b>B</b>    | YES             | YES              | GOLD <sup>1</sup>             | LOW LEVEL/DRY CIRCUIT             | 0.4 VA MAX. @ 20 V AC or DC MAX   |
| <b>G</b>    | YES             | YES              | GOLD SILVER <sup>3</sup>      | LOW LEVEL/DRY CIRCUIT<br>OR POWER | 0.4 VA MAX. @ 20 V AC or DC MAX. or 4 AMPS @ 125 V AC<br>or 28 V DC; 2 AMPS @ 250 V AC (UL/CSA) |

\* Note: See Technical Data section of this catalog for RoHS compliant and compatible definitions and specifications.

<sup>1</sup> CONTACTS & TERMINALS: Copper, with gold plate over nickel plate.

<sup>2</sup> CONTACTS & TERMINALS: Copper, silver plated (std. with all termination options).

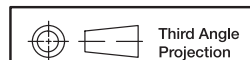
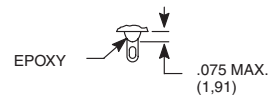
<sup>3</sup> CONTACTS & TERMINALS: Copper, with gold plate over silver plate.

All models   with all options when ordered with 'G' or 'Q' contact material.

## SEAL

**NONE** NO SEAL

**E** EPOXY SEAL



Dimensions are shown: Inch (mm)  
Specifications and dimensions subject to change

[www.ck-components.com](http://www.ck-components.com)



Switchlock

# Y Series 4, 5 & 6 Tumbler Switchlocks

## AVAILABLE HARDWARE



Key Code: A126  
4 TUMBLER  
**PART NO. (ONE KEY)**  
**115140126**  
**Material:** Brass  
Finish: Nickel plate

Key Code: D001  
5 TUMBLER  
**PART NO. (ONE KEY)**  
**115441001**  
**Material:** Brass  
Finish: Nickel plate

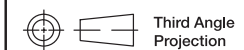


Key Code: AAAA  
**PART NO. (ONE KEY)**  
**363C1AAAA**

**Material:** Zinc alloy  
Finish: Chrome plate



Switchlock



Dimensions are shown: Inch (mm)  
Specifications and dimensions subject to change

[www.ck-components.com](http://www.ck-components.com)