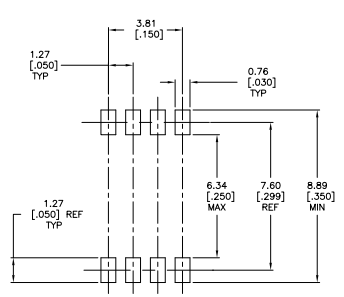
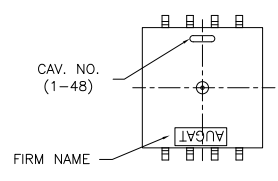
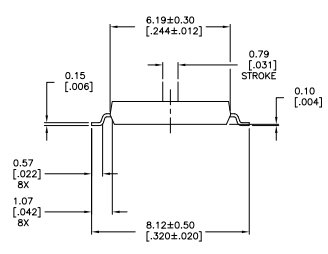
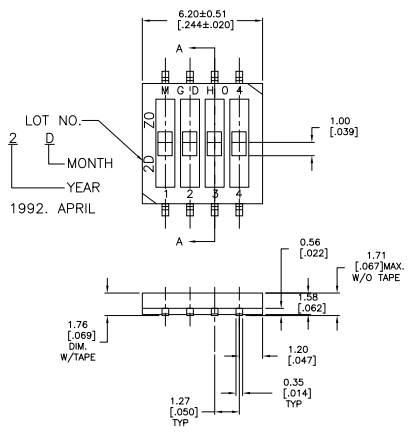


THIS DRAWING IS UNPUBLISHED
 ALL INFORMATION HEREIN IS UNCLASSIFIED
 DATE 03-08-2011 BY 60322 UCBAW/SJS

REV	DATE	DESCRIPTION	BY	CHK
AD	00			
03		REVISED PER ECO-08-031309		



RECOMMENDED PAD LAYOUT
 TOLERANCE ±.002 UNLESS OTHERWISE NOTED

SPECIFICATIONS:

MATERIALS:

CASE-PPS UL94V-0, BLACK
 COVER-PPS UL94V-0, BLACK
 ACTUATOR-LCP UL94V-0, WHITE
 FIXED CONTACT-COPPER ALLOY, GOLD OVER NICKEL PLATE
 MOVING CONTACT-COPPER ALLOY, GOLD OVER NICKEL PLATE
 TERMINAL-COPPER ALLOY, GOLD OVER NICKEL PLATE
 TAPE SEAL-POLYIMIDE FILM

ELECTRICAL:

CONTACT RATING: NON-SWITCHING: 100 MILLIAMPS @50 VDC
 SWITCHING: 25 MILLIAMPS @24 VDC
 INITIAL CONTACT RESISTANCE: 100 MEGOHMS MAX. @2 VDC. 10 mA.
 INSULATION RESISTANCE: 100 MEGOHMS MIN AT 100 VDC
 DIELECTRIC STRENGTH: 300 VAC, 1 MINUTE.
 LIFE EXPECTANCY: 1,000 CYCLES MIN.

MECHANICAL:

ACTUATION FORCE: 600g MAX.

ENVIRONMENTAL:

OPERATING TEMPERATURE: -30°C TO +85°C
 STORAGE TEMPERATURE: -45°C TO +100°C
 SOLDER HEAT RESISTANCE PER 109-201, CONDITION B SWITCH IN OFF POSITION
 SOLDERABILITY PER JIS C 0050 & JIS C 0053

- SUPPLIED WITH TAPE SEAL STANDARD
- SWITCH IS TO HAVE OVERALL HEIGHT AS SHOWN
- ITEM TO BE PACKAGED IN TUBES, QUANTITY PER TUBE=70
- SWITCH SHALL BE MARKED AS SHOWN
- ALL MATERIALS AND FINISHES SHALL COMPLY WITH EU DIRECTIVE 2002/95/EC OF 27JAN2003 (ROHS)
- TAPE AND REEL PACKAGING PER EIA-481

2000	T&R	MGDHO4STR04	1825140-2
70	TUBE	MGDHO404	1825140-1
QTY	PACKAGING	T&B P/N	TE P/N

THIS DRAWING IS A CONTROLLED DOCUMENT.		DATE: 08-03-2009		DRAWN BY: J. S. SHERMAN		CHECKED BY: J. S. SHERMAN		DATE: 08-03-2009		DRAWN BY: J. S. SHERMAN		CHECKED BY: J. S. SHERMAN		DATE: 08-03-2009	
DRAWING NO. 100779		REV. 01		DATE: 08-03-2009		DRAWN BY: J. S. SHERMAN		CHECKED BY: J. S. SHERMAN		DATE: 08-03-2009		DRAWN BY: J. S. SHERMAN		CHECKED BY: J. S. SHERMAN	
CUSTOMER DRAWING		DATE: 10-11		PAGE: 1		OF: 1		REV: 03		DATE: 10-11		PAGE: 1		OF: 1	