

## Right Angle Panel DIP Switches

### Features

#### Optimized Mechanical Features

- Designed for panel applications  
Saves cost of right angle socket
- Multiple circuit configurations available
- Standard 2.54mm (.100") x 2.54mm (.100") centers, uses minimum PCB real estate
- Sealed version optional: assures contaminant-free switch operation after wave soldering and cleaning
- Available with low profile, standard, or extended actuators for SPST circuitry

#### Optimized Contact System

- Contact wiping action on make and break
- Integral terminal and contact locked into high temperature plastic base
- Electrostatic discharge shield rated to 22 KV

#### Materials

- Series 206RA, gold plated contacts for long-term contact corrosion resistance
- Series 208RA, tin plated contacts
- UL 94V-0 plastics
- RoHS compliant



**Series 206RA – Premium Gold Plated Contacts**  
**Series 208RA – Economical Tin Plated Contacts**

## Electrical and Mechanical Specifications

#### Switch Function

- SPST - 2 through 10 and 12 positions
- SPDT&DPST- 1 through 6 positions
- DPDT&4PST - 1 through 3 positions
- 3PST - 1 through 4 positions

#### Switch Contact Resistance

Switch Series	Initial, max.	End of life , max.
206RA	50 milliohms	100 milliohms
208RA	100 milliohms	500 milliohms

#### Insulation Resistance

1,000 megohms minimum between insulated terminals

#### Dielectric Strength

500 VAC for 1 minute between adjacent switches

#### Nonswitching Rating

100 mA or 50 VDC maximum

#### Switch Capacitance

5.0 pF maximum between adjacent closed switches

#### Operating Temperature

-55°C to +85°C

#### Actuation Life

Series 206RA: 10,000 cycles switching 50 mA @ 24 VDC  
Series 208RA: 2,000 cycles switching 50 mA @ 24 VDC

#### Allowable Solder Time

Wave soldering up to 5 seconds at 260°C

#### Vibration

Per MIL-STD-202F, method 204D, condition B (.06" or 15 G's between 10 HZ to 2K HZ) with no contact inconsistencies greater than 1 microsecond

#### Shock

Per MIL-STD-202F, method 213B, condition A (50 G's) with no contact inconsistencies greater than 1 microsecond

#### Sealing

Bottom epoxy seal optional  
Top tape seal optional

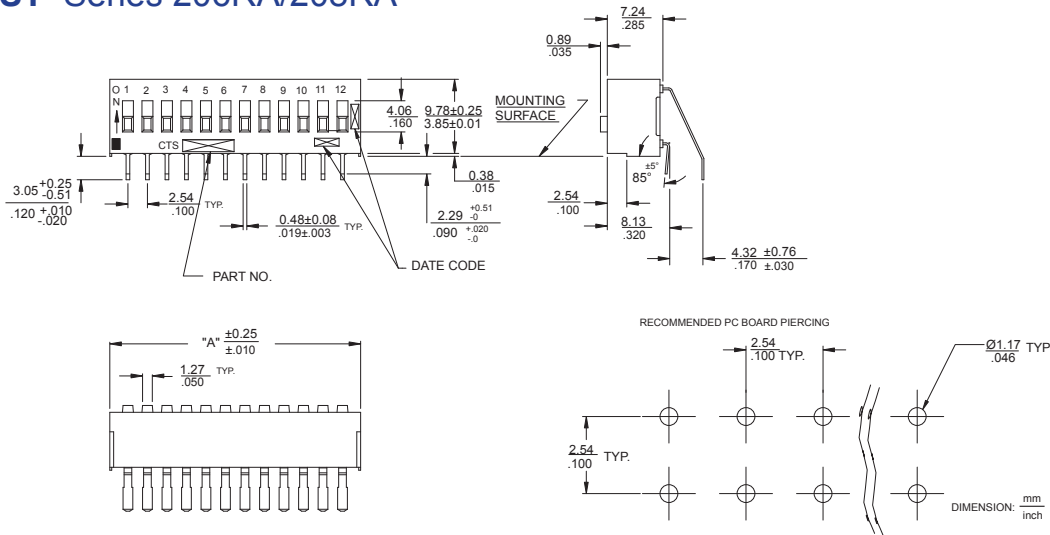
#### Marking

Special side or top marking available-consult CTS

#### Packaging

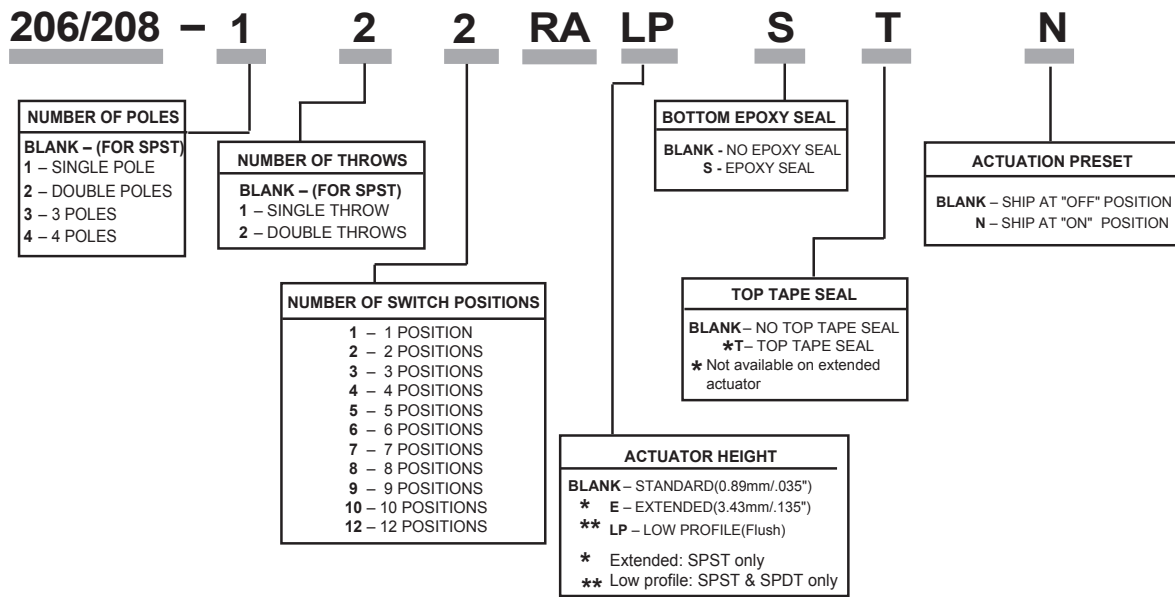
Standard : Anti-Static tube packaging

# SPST Series 206RA/208RA



Please find panel drawing of 206/208 RA DIP switches with SPDT, DPST, DPDT, 3PST, or 4PST circuitry from 206/208 series data sheet

## Ordering Information



Standard Part #		SPST Switches		SPDT&DPST Switches			3PST Switches		DPDT/ 4PST Switches		
Dimensions (mm/inch)	No of SW positions	SPST P/N	No of SW positions	SPDT P/N	DPST P/N	No of SW positions	3PST P/N	No of SW positions	DPDT P/N	4PST P/N	
7.26 / .286	2	206/208-2 RA	1	206/208-121RA	206/208-211RA	—	—	—	—	—	
9.80 / .386	3	206/208-3 RA	—	—	—	1	206/208-311RA	—	—	—	
12.34 / .486	4	206/208-4 RA	2	206/208-122RA	206/208-212RA	—	—	1	206/208-221RA	206/208-411RA	
14.88 / .586	5	206/208-5 RA	—	—	—	—	—	—	—	—	
17.42 / .686	6	206/208-6 RA	3	206/208-123RA	206/208-213RA	2	206/208-312RA	—	—	—	
19.96 / .786	7	206/208-7 RA	—	—	—	—	—	—	—	—	
22.50 / .886	8	206/208-8 RA	4	206/208-124RA	206/208-214RA	—	—	2	206/208-222RA	206/208-412RA	
25.04 / .986	9	206/208-9 RA	—	—	—	3	206/208-313RA	—	—	—	
27.58 / 1.086	10	206/208-10 RA	5	206/208-125RA	206/208-215RA	—	—	—	—	—	
32.66 / 1.286	12	206/208-12 RA	6	206/208-126RA	206/208-216RA	4	206/208-314RA	3	206/208-223RA	206/208-413RA	