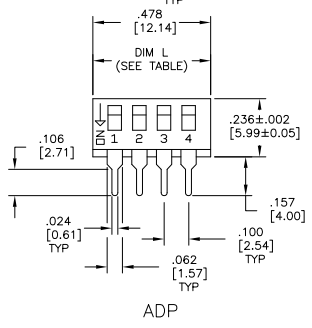
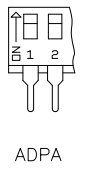
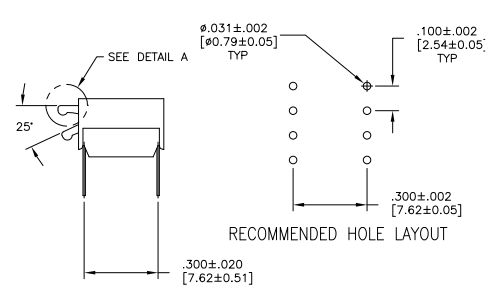
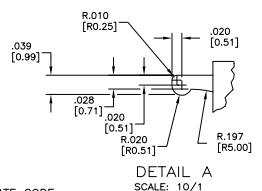
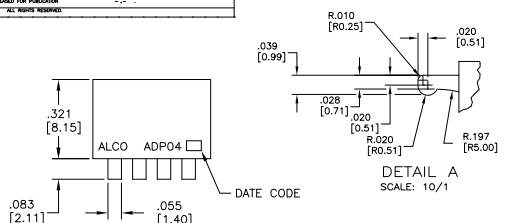


THIS DRAWING IS UNAPPROVED FOR PRODUCTION  
 © 2003 BY TDK ELECTRONICS CORPORATION. ALL RIGHTS RESERVED.

REV	DATE	DESCRIPTION	BY	CHK
AD 00				
C	2003-05-17053		284006	MS MS



**SPECIFICATIONS:**  
**MATERIAL:**  
 CASE: PPS 94V-0, BLACK  
 COVER: PPS 94V-0, BLACK  
 ACTUATOR: NYLON PAET 94V-0, WHITE  
 MOVING CONTACT: COPPER ALLOY, GOLD OVER NICKEL PLATE.  
 FIXED CONTACT/TERMINAL: COPPER ALLOY, GOLD OVER NICKEL PLATE.  
**ELECTRICAL:**  
 CONTACT RATING: 1A MAX. (NON-SWITCHING), .1MICROAMP(1MILLIVOLT) MIN (SWITCHING 100mA @ .5V DC-SWITCHING 25mA @ 24V DC-SWITCHING CHANGE  
 INITIAL CONTACT RESISTANCE: 50 MILLIOHMS MAX.  
 INSULATION RESISTANCE: 100 MEGOHMS MIN. @ 100 VDC.  
 DIELECTRIC STRENGTH: 500 VAC. LIFE EXPECTANCY: 1000 CYCLES MIN.  
**MECHANICAL:**  
 ACTUATION FORCE: 800g MAX.  
**ENVIRONMENTAL:**  
 OPERATING TEMPERATURE: -22F TO +185F (-30C TO +85C).  
 STORAGE TEMPERATURE: -49F TO +212F (-45C TO +100C).  
 SOLDER HEAT RESISTANCE TO 509±37.4F [265±3.0C] FOR 8±2 SECONDS.  
 SOLDERABILITY PER JIS C 0050 & JIS C 0053

- NOTES:**
- CONTACT PRESSURE: 280,000 PSI.
  - CLEANING: AQUEOUS SOLUTION OR SOLVENT.
  - PACKAGING OPTIONS- CLEAR TUBES OR TAPE AND REEL PER EA-481 SWITCH SUPPLIED IN THE "OFF" POSITION UNLESS "ON" IS SPECIFIED IN THE ALCO PART NUMBER (SEE PART NUMBER TABLE FOR ALL OPTIONS)
  - TOP & FRONT SURFACES TO BE CLEARLY MARKED AS SHOWN.
  - SWITCHES TO BE BLACK WITH WHITE ACTUATORS AND MARKINGS.
  - ALL MATERIAL AND FINISHES SHALL COMPLY WITH EU DIRECTIVE 2002/95/EC OF 27JAN2003 (ROHS)

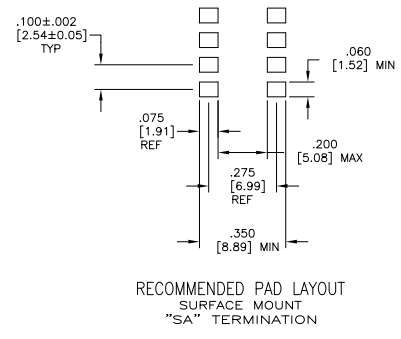
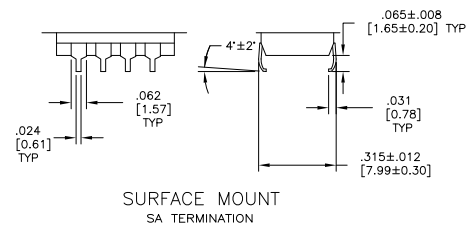
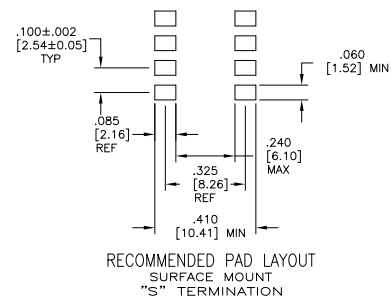
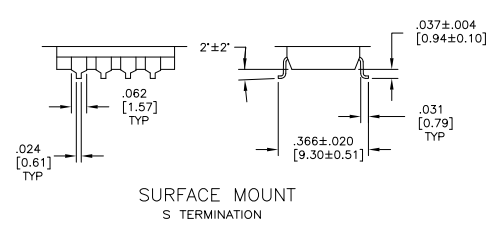
SEE SHEET 2 FOR SURFACE MOUNT OPTIONS AND DIMENSIONS.

QTY	QTY	QTY	QTY	QTY	QTY
TUBE	10	1.078 [27.38]	ADPA10SA04	6-1571999-4	
TUBE	10	1.078 [27.38]	ADPA10S04	6-1571999-3	
TUBE	10	1.078 [27.38]	ADPA10D04	6-1571999-2	
TUBE	9	.978 [24.84]	ADPA09SA04	6-1571999-1	
TUBE	9	.978 [24.84]	ADPA09S04	6-1571999-0	
TUBE	9	.978 [24.84]	ADPA09D04	5-1571999-9	
TUBE	8	.878 [22.30]	ADPA08SA04	5-1571999-8	
TUBE	8	.878 [22.30]	ADPA08S04	5-1571999-7	
TUBE	8	.878 [22.30]	ADPA08D04	5-1571999-6	
TUBE	7	.778 [19.76]	ADPA07SA04	5-1571999-5	
TUBE	7	.778 [19.76]	ADPA07S04	5-1571999-4	
TUBE	7	.778 [19.76]	ADPA07D04	5-1571999-3	
TUBE	6	.678 [17.22]	ADPA06SA04	5-1571999-2	
TUBE	6	.678 [17.22]	ADPA06S04	5-1571999-1	
TUBE	6	.678 [17.22]	ADPA06D04	5-1571999-0	
TUBE	6	.678 [17.22]	ADPA06D04	5-1571999-0	
TUBE	5	.578 [14.68]	ADPA05SA04	4-1571999-9	
TUBE	5	.578 [14.68]	ADPA05S04	4-1571999-8	
TUBE	5	.578 [14.68]	ADPA05D04	4-1571999-7	
TUBE	4	.478 [12.14]	ADPA04SA04	4-1571999-6	
TUBE	4	.478 [12.14]	ADPA04S04	4-1571999-5	
TUBE	4	.478 [12.14]	ADPA04D04	4-1571999-4	
TUBE	2	.278 [7.06]	ADPA02SA04	4-1571999-3	
TUBE	2	.278 [7.06]	ADPA02S04	4-1571999-2	
TUBE	2	.278 [7.06]	ADPA02D04	4-1571999-1	
TAPE & REEL SWITCH ON	10	1.078 [27.38]	ADP10STR04	4-1571999-0	
TAPE & REEL	10	1.078 [27.38]	ADP10TR04	3-1571999-9	
TUBE	10	1.078 [27.38]	ADP10S04	3-1571999-8	
TUBE	10	1.078 [27.38]	ADP10D04	3-1571999-7	
TAPE & REEL SWITCH ON	10	1.078 [27.38]	ADP08STR04	3-1571999-6	
TAPE & REEL	9	.978 [24.84]	ADP08TR04	3-1571999-5	
TUBE	9	.978 [24.84]	ADP08S04	3-1571999-4	
TUBE	9	.978 [24.84]	ADP08D04	3-1571999-3	
TAPE & REEL SWITCH ON	8	.878 [22.30]	ADP06STR04	3-1571999-2	
TAPE & REEL	8	.878 [22.30]	ADP06TR04	2-1571999-9	
TUBE	8	.878 [22.30]	ADP06S04	2-1571999-8	
TUBE	8	.878 [22.30]	ADP06D04	2-1571999-7	
TAPE & REEL SWITCH ON	7	.778 [19.76]	ADP05STR04	2-1571999-6	
TAPE & REEL	7	.778 [19.76]	ADP05TR04	2-1571999-5	
TUBE	7	.778 [19.76]	ADP05S04	2-1571999-4	
TUBE	7	.778 [19.76]	ADP05D04	2-1571999-3	
TAPE & REEL SWITCH ON	7	.778 [19.76]	ADP04STR04	2-1571999-2	
TAPE & REEL	6	.678 [17.22]	ADP04TR04	2-1571999-1	
TUBE	6	.678 [17.22]	ADP04S04	2-1571999-0	
TUBE	6	.678 [17.22]	ADP04D04	1-1571999-9	
TAPE & REEL SWITCH ON	5	.578 [14.68]	ADP03STR04	1-1571999-8	
TAPE & REEL	5	.578 [14.68]	ADP03TR04	1-1571999-7	
TUBE	5	.578 [14.68]	ADP03S04	1-1571999-6	
TUBE	5	.578 [14.68]	ADP03D04	1-1571999-5	
TAPE & REEL SWITCH ON	4	.478 [12.14]	ADP02STR04	1-1571999-4	
TAPE & REEL	4	.478 [12.14]	ADP02TR04	1-1571999-3	
TUBE	4	.478 [12.14]	ADP02S04	1-1571999-2	
TUBE	4	.478 [12.14]	ADP02D04	1-1571999-1	
PACKAGING	Pole	Dim L	Dim T&B P/N	TYCD P/N	

THIS DRAWING IS A CONTROLLED DOCUMENT

REVISIONS	DATE	BY	CHK
1	2003-05-17	284006	MS

Customer Drawing: A100779G-1571999



THIS DRAWING IS A CONTROLLED DOCUMENT.		DESIGNED BY	DATE	REVISED BY	DATE
DRAWN BY		APPROVED BY			
CHECKED BY		DATE			
REVISIONS		Tyco Electronics Corporation Harrisburg, Pa 17105-3008			
PART NUMBER: 1571999 TITLE: DIP SWITCH ASSEMBLY SERIES: ADP/PA SERIES		SIZE: A1 DATE: 100779 DRAWING NO: 1571999 SHEET: 1 OF 2			
CUSTOMER DRAWING					