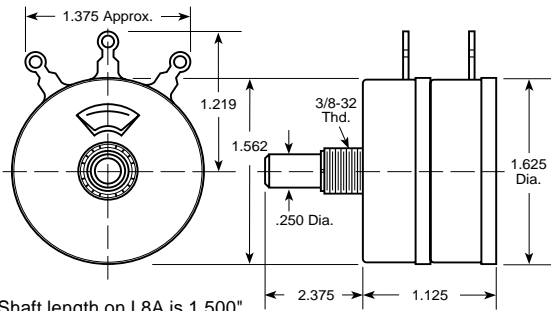


Wirewound Audio Attenuators

Presents constant impedance to source (Amplifier). Used in audio circuits where output (Speaker) impedance is not critical



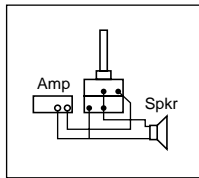
* Shaft length on L8A is 1.500"

Power Rating: 4 Watts
 Continuous Audio: 15 Watts
 Dielectric Strength: Mounting plate to terminals, high pot test for 1 minute @ 900 VAC
 Insulation Resistance: 1000 megohms minimum (50% relative humidity @ 25°C)
 Operating Temperature: -55°C to +105°C
 Operating Life: 10,000 cycles standard
 Mechanical Rotation: 294° ±5°
 Bushing Information: Thread: 3/8-32 NEF-2A
 Contact Arm: Insulated from case
 Terminals: Solder Lug

Ohms Rating	Catalog Number
4	L4
8	L8
8	L8A *
15	L15
50	L50
600	L600
2000	L2000

MGL Pad Attenuator

Same as L Pad but with glass element for higher wattage

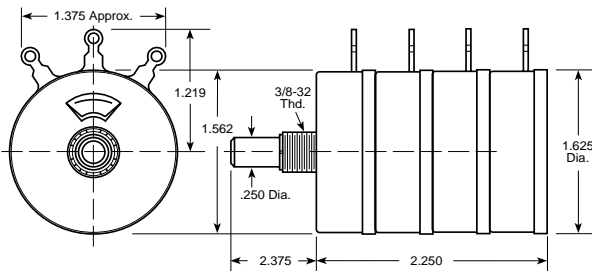


Power Rating: 12.5 Watts
 Continuous Audio: 50 Watts
 Dielectric Strength: Mounting plate to terminals, high pot test for 1 minute @ 900 VAC
 Insulation Resistance: 1000 megohms minimum (50% relative humidity @ 25°C)
 Operating Temperature: -55°C to +250°C
 Operating Life: 10,000 cycles standard
 Mechanical Rotation: 294° ±5°
 Bushing Information: Thread: 3/8-32 NEF-2A
 Contact Arm: Insulated from case
 Terminals: Solder Lug

Ohms Rating	Catalog Number
8	MGL8
16	MGL16

LL Pad Attenuator

Two L pads in tandem for Stereo Level Control

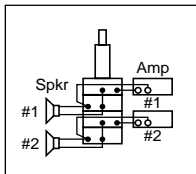


Power Rating: 4 Watts
 Continuous Audio: 15 Watts
 Dielectric Strength: Mounting plate to terminals, high pot test for 1 minute @ 900 VAC
 Insulation Resistance: 1000 megohms minimum (50% relative humidity @ 25°C)
 Operating Temperature: -55°C to +105°C
 Operating Life: 10,000 cycles standard
 Mechanical Rotation: 294° ±5°
 Bushing Information: Thread: 3/8-32 NEF-2A
 Contact Arm: Insulated from case
 Terminals: Solder Lug

Ohms Rating	Catalog Number
4	LL4
8	LL8
16	LL16

MGLL Pad Attenuator

Same as LL Pad but with glass element for higher wattage



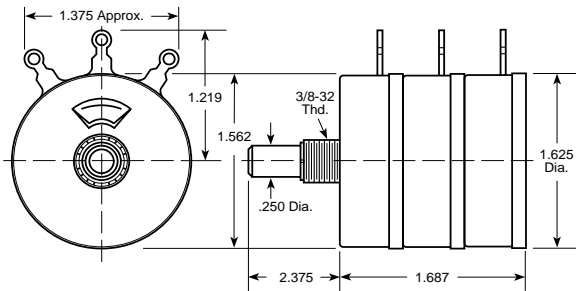
Power Rating: 12.5 Watts
 Continuous Audio: 50 Watts
 Dielectric Strength: Mounting plate to terminals, high pot test for 1 minute @ 900 VAC
 Insulation Resistance: 1000 megohms minimum (50% relative humidity @ 25°C)
 Operating Temperature: -55°C to +105°C
 Operating Life: 10,000 cycles standard
 Mechanical Rotation: 294° ±5°
 Bushing Information: Thread: 3/8-32 NEF-2A
 Contact Arm: Insulated from case
 Terminals: Solder Lug

Ohms Rating	Catalog Number
8	MGLL8

All Audio Attenuators are supplied with palnut and dial plate.
 Dial Plate 395 for Mono and Dial Plate 495 for Stereo.

Wirewound Audio Attenuators

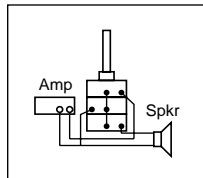
T Pad Attenuator



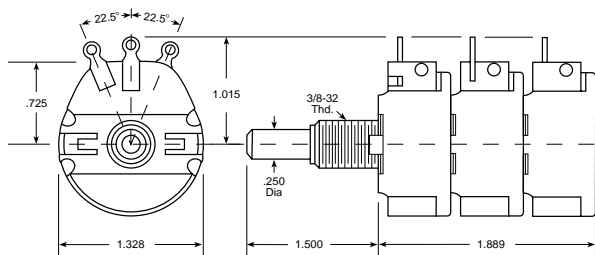
Presents constant impedance to both source (Amplifier) and output (Speaker)

Power Rating: 4 Watts
 Continuous Audio: 15 Watts
 Dielectric Strength: Mounting plate to terminals, high pot test for 1 minute @ 900 VAC
 Insulation Resistance: 1000 megohms minimum. (50% relative humidity @ 25°C)
 Operating Temperature: -55°C to +105°C
 Operating Life: 10,000 cycles standard.
 Mechanical Rotation: 294° ±5°
 Bushing Information: Thread: 3/8-32 NEF-2A
 Contact Arm: Insulated from case
 Terminals: Solder Lug

Ohms Rating	Catalog Number
8	T8
50	T50
600	T600



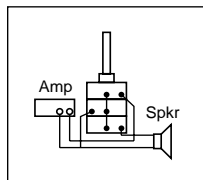
RT Pad Attenuator



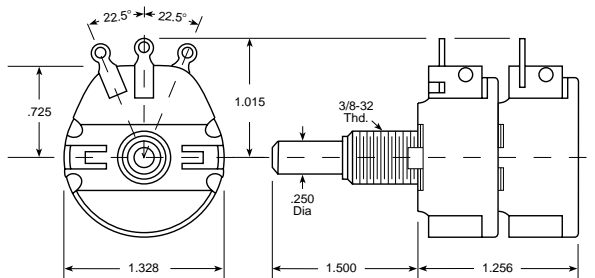
Presents constant impedance to both source (Amplifier) and output (Speaker)

Power Rating: 3 Watts
 Continuous Audio: 10 Watts
 Dielectric Strength: Mounting plate to terminals, high pot test for 1 minute @ 900 VAC
 Insulation Resistance: 1000 megohms minimum (50% relative humidity @ 25°C)
 Operating Temperature: -30°C to +105°C
 Operating Life: 10,000 cycles standard
 Mechanical Rotation: 300° ±5°
 Bushing Information: Thread: 3/8-32 NEF-2A
 Contact Arm: Insulated from case
 Terminals: Solder Lug

Ohms Rating	Catalog Number
8	RT8



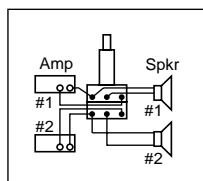
Stereo Level Control



50 Ohm tandem dual level control for lower priced 4 and 8 Ohm stereo speakers

Power Rating: 3 Watts
 Continuous Audio: 10 Watts
 Dielectric Strength: Mounting plate to terminals, high pot test for 1 minute @ 900 VAC
 Insulation Resistance: 1000 megohms minimum (50% relative humidity @ 25°C.)
 Operating Temperature: -30°C to +105°C.
 Operating Life: 10,000 cycles standard
 Mechanical Rotation: 300° ±5°
 Bushing Information: Thread: 3/8-32 NEF-2A
 Contact Arm: Insulated from case
 Terminals: Solder Lug

Ohms Rating	Catalog Number
50	RR50



All Audio Attenuators are supplied with palnut and dial plate.
 Dial Plate 395 for Mono and Dial Plate 495 for Stereo.