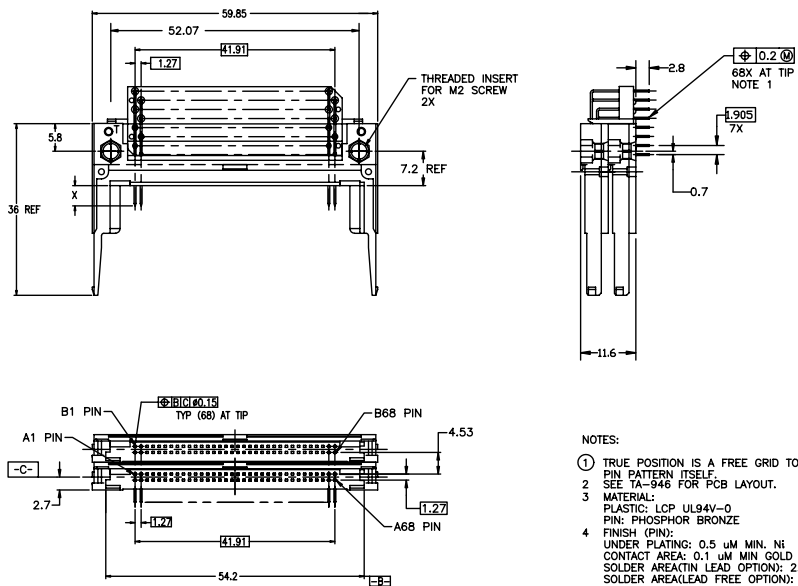


Tous droits strictement réservés. Reproduction ou communication à des tiers interdite sous quelque forme que ce soit sans autorisation écrite du propriétaire. Propriété de FCI. Droits de reproduction FCI.

All rights strictly reserved. Reproduction or issue to third parties in any form whatever is not permitted without written authority from the proprietor. Property of FCI. Copyright FCI.

| | | | | | |
|-----------------|----------|---------|---------------------|-----------------|-------|
| PRODUCT NO. | DIM X | | | MOUNTING STYLE | COLOR |
| | 4.25±0.1 | 3.5±0.1 | 5.0±0.1 | | |
| 92821-000/000LF | OTHERS | 36,67 | 1,17,34 35,51,68 | TOP W/O LOCATOR | BLACK |



- NOTES:
- TRUE POSITION IS A FREE GRID TO THE PIN PATTERN ITSELF.
 - SEE TA-946 FOR PCB LAYOUT.
 - MATERIAL: PLASTIC: LCP UL94V-0
PIN: PHOSPHOR BRONZE
 - FINISH (PIN):
UNDER PLATING: 0.5 µM MIN. Ni
CONTACT AREA: 0.1 µM MIN GOLD OVER 0.5 µM MIN. Pd-Ni
SOLDER AREA(TIN LEAD OPTION): 2.5 µM MIN. Sn-Pb
SOLDER AREA(LEAD FREE OPTION): 2.5 µM MIN. PURE TIN.

| | | | | | | | |
|-------------|----------|---------------------------------------|----------|---------------|-------------------|------------------------|-------------------------|
| mat'l. code | | tolerances unless otherwise specified | | CUSTOMER COPY | | www.fciconnect.com | |
| ltr | ecn no | dr | date | linear | .XX±.13 | projection | title |
| D | V31680 | RDS | 9/8/93 | | .XX±.13 | | 68 POSITION DOUBLE DECK |
| E | V40623 | RDS | 3/16/94 | angles | .XXX±.051 | | TYPE-123 EJECT HEADER |
| F | V41226 | RDS | 8/18/94 | | 0° ±2' | | product family MCS |
| G | V41439 | RDS | 9/30/94 | dr | D.SHEAFFER 6/9/93 | MM | code - |
| H | T40309 | MSC | 2/2/95 | engr | D.BRANN 6/9/93 | scale 2:1 | size dwg no |
| J | V12164 | TFG | 8/17/01 | chr | D.BRANN 6/9/93 | A4 | 92821 |
| K | N05-0052 | WB | 02/25/05 | appd | D.BRANN 6/9/93 | | sheet 1 of 6 |
| sheet index | revision | K | K | K | K | K | K |
| | sheet | 1 | 2 | 3 | 4 | 5 | 6 |

ACAD

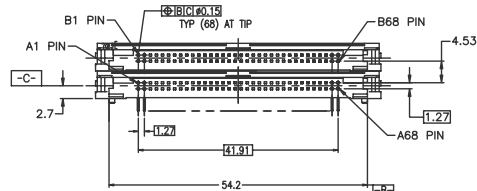
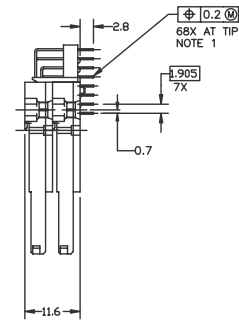
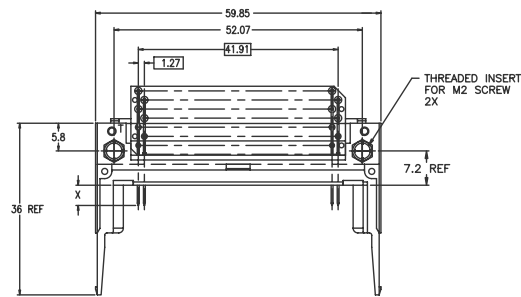
PDM: Rev:K

STATUS Released 26 Printed: Oct 12, 2014

Tous droits strictement réservés. Reproduction ou communication a des tiers
interdite sous quelque forme que ce soit sans autorisation écrite du propriétaire.
Propriété de c FCI. Droits de reproduction FCI.

All rights strictly reserved. Reproduction or issue to third parties in any
form whatever is not permitted without written authority from the proprietor.
Property of FCI. Copyright FCI.

| | | | | | |
|-----------------|----------|---------|---------------------|----------------|-------|
| PRODUCT NO. | DIM X | | | MOUNTING STYLE | COLOR |
| | 4.25±0.1 | 3.5±0.1 | 5.0±0.1 | | |
| 92821-003/003LF | OTHERS | 36,67 | 1,17,34 35,51,68 | TOP W\LOCATOR | BLACK |



- NOTES:
- TRUE POSITION IS A FREE GRID TO THE PIN PATTERN ITSELF.
 - SEE TA-946 FOR PCB LAYOUT.
 - MATERIAL:
PLASTIC: LCP UL94V-0
PIN: PHOSPHOR BRONZE
 - FINISH (PIN):
UNDER PLATING: 0.5 μM MIN. Ni
CONTACT AREA: 0.1 μM MIN GOLD OVER 0.5 μM MIN. Pd-Ni
SOLDER AREA(TIN LEAD OPTION): 2.5 μM MIN. Sn-Pb
SOLDER AREA(LEAD FREE OPTION): 2.5 μM MIN. PURE TIN

| | | | | | | | |
|-------------|----------|---------------------------------------|------|----------------------|------------|-------------------------|--------|
| mat'l. code | | tolerances unless otherwise specified | | CUSTOMER COPY | | www.fciconnect.com | |
| ltr | ecn no | dr | date | linear | projection | title | |
| K | | | | .XX±.13 | MM | 68 POSITION DOUBLE DECK | |
| | | | | .XXX±.051 | | TYPE-123 EJECT HEADER | |
| | | | | angles | scale | product family | code |
| | | | | dr D.SHEAFFER 6/9/93 | 2:1 | MCS | - |
| | | | | enrg D.BRANN 6/9/93 | | size | dwg no |
| | | | | chr D.BRANN 6/9/93 | | A4 | 92821 |
| | | | | appd D.BRANN 6/9/93 | | | sheet |
| sheet | revision | | | | | | 2 of |
| index | sheet | | | | | | |

1 | 2

ACAD

PDM: Rev:K

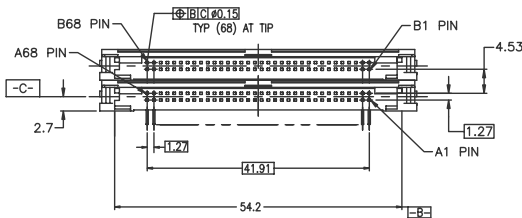
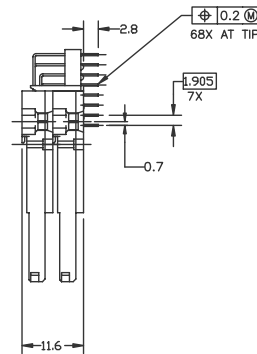
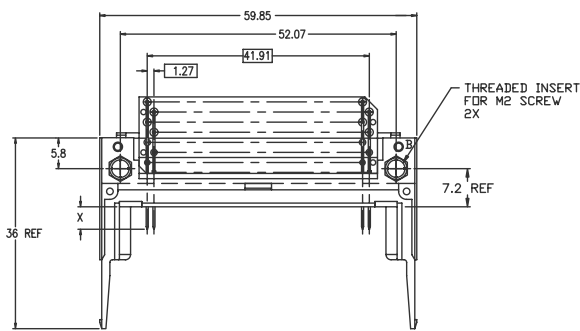
STATUS Released 2.6 Printed: Oct 12, 2014

B

Tous droits strictement réservés. Reproduction ou communication à des tiers interdite sous quelque forme que ce soit sans autorisation écrite du propriétaire. Property of FCI. Droits de reproduction FCI.

All rights strictly reserved. Reproduction or issue to third parties in any form whatever is not permitted without written authority from the proprietor. Property of FCI. Copyright FCI.

| | | | | | |
|-----------------|----------|---------|---------------------|--------------------|---------|
| PRODUCT NO. | DIM X | | | MOUNTING STYLE | COLOR |
| | 4.25±0.1 | 3.5±0.1 | 5.0±0.1 | | |
| 92821-500/500LF | OTHERS | 36,67 | 1,17,34 35,51,68 | BOTTOM W/O LOCATOR | NATURAL |



NOTES:

- TRUE POSITION IS A FREE GRID TO THE PIN PATTERN ITSELF.
- SEE TA-946 FOR PCB LAYOUT.
- MATERIAL:
PLASTIC: LCP UL94V-0
PIN: PHOSPHOR BRONZE
- FINISH (PIN):
UNDER PLATING: 0.5 µM MIN. Ni
CONTACT AREA: 0.1 µM MIN. GOLD OVER 0.5 µM MIN. Pd-Ni
SOLDER AREA(TIN LEAD OPTION): 2.5 µM MIN. Sn-Pb
SOLDER AREA(LEAD FREE OPTION): 2.5 µM MIN. PURE TIN

| | | | | | | | |
|-------------|----------------|---------------------------------------|------|---------------|-------------------|------------------------|-------------------------|
| mat'l. code | | tolerances unless otherwise specified | | CUSTOMER COPY | | www.fciconnect.com | |
| ltr | ecn no | dr | date | linear | .X±.3 | projection | title |
| K | | | | | .XX±.13 | MM | 68 POSITION DOUBLE DECK |
| | | | | angles | .XXX±.051 | | product family |
| | | | | dr | 0° ±2' | size | dwg no |
| | | | | engr | D.SHEAFFER 6/9/93 | scale | 92821 |
| | | | | chr | D.BRANN 6/9/93 | A4 | sheet 3 of |
| | | | | appd | D.BRANN 6/9/93 | | |
| sheet index | revision sheet | | | | | | |

ACAD

PDM: Rev:K

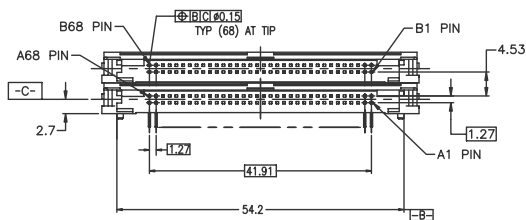
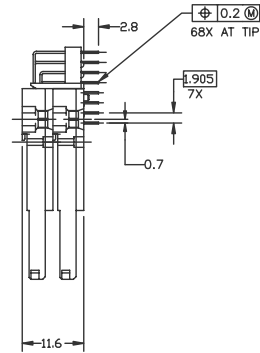
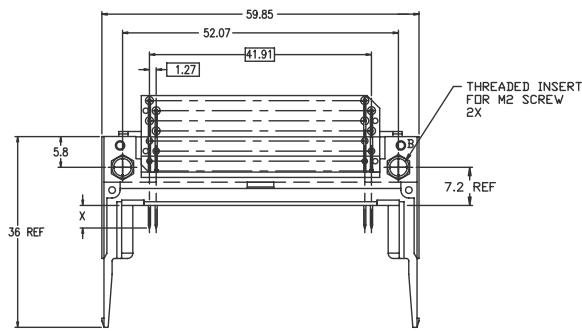
STATUS Released

cage code 26 Printed: Oct 12, 2014

Tous droits strictement réservés. Reproduction ou communication à des tiers
interdite sous quelque forme que ce soit sans autorisation écrite du propriétaire.
Propriété de c FCI. Droits de reproduction FCI.

All rights strictly reserved. Reproduction or issue to third parties in any
form whatever is not permitted without written authority from the proprietor.
Property of FCI. Copyright FCI.

| | | | | | |
|-----------------|----------|---------|---------------------|------------------|---------|
| PRODUCT NO. | DIM X | | | MOUNTING STYLE | COLOR |
| | 4.25±0.1 | 3.5±0.1 | 5.0±0.1 | | |
| 92821-503/503LF | OTHERS | 36,67 | 1,17,34 35,51,68 | BOTTOM W\LOCATOR | NATURAL |



NOTES:

- TRUE POSITION IS A FREE GRID TO THE PIN PATTERN ITSELF.
- SEE TA-946 FOR PCB LAYOUT.
- MATERIAL:
PLASTIC: LCP UL94V-0
PIN: PHOSPHOR BRONZE
- FINISH (PIN):
UNDER PLATING: 0.5 µM MIN. NI
CONTACT AREA: 0.1 µM MIN GOLD OVER 0.5 µM MIN. Pd-NI
SOLDER AREA (LEAD OPTION): 2.5 µM MIN. Sn-Pb
SOLDER AREA (LEAD FREE OPTION): 2.5 µM MIN. PURE TIN

| | | | | | | | |
|-------------|----------------|---------------------------------------|------|---------------|-------------------|------------------------|--|
| mat'l. code | | tolerances unless otherwise specified | | CUSTOMER COPY | | www.fciconnect.com | |
| ltr | ecn no | dr | date | linear | .XX±.13 | MM | title |
| k | | | | linear | .XXX±.051 | | 68 POSITION DOUBLE DECK TYPE-123 EJECT HEADER |
| | | | | angles | 0° ±2' | product family | MCS |
| | | | | dr | D.SHEAFFER 6/9/93 | size | dwg no |
| | | | | engr | D.BRANN 6/9/93 | scale | 2:1 |
| | | | | chr | D.BRANN 6/9/93 | A4 | 92821 |
| | | | | appd | D.BRANN 6/9/93 | | sheet 4 of |
| sheet index | revision sheet | | | | | | |

ACAD

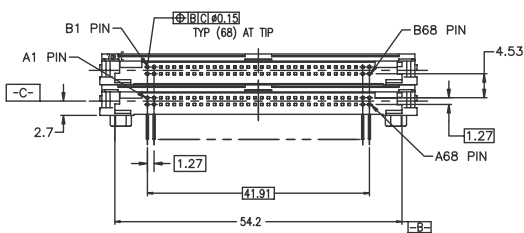
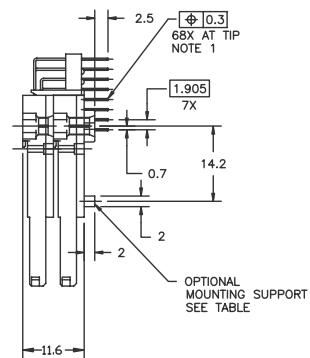
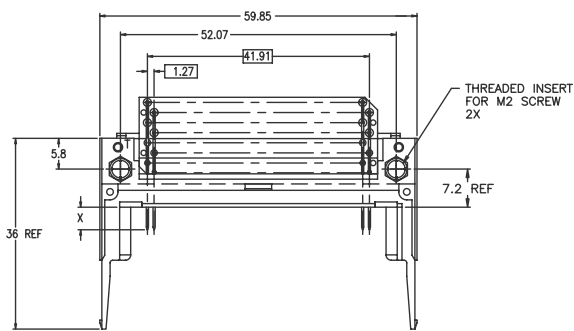
PDM: Rev:K

STATUS: Released
cage code 26 Printed: Oct 12, 2014

Tous droits strictement réservés. Reproduction ou communication à des tiers interdite sous quelque forme que ce soit sans autorisation écrite du propriétaire. Propriété de c FCI. Droits de reproduction FCI.

All rights strictly reserved. Reproduction or issue to third parties in any form whatever is not permitted without written authority from the proprietor. Property of FCI. Copyright FCI.

| PRODUCT NO. | DIM X | | | MOUNTING STYLE | COLOR | MOUNTING STYLE |
|-----------------|----------|---------|---------------------|-----------------|-------|----------------|
| | 4.25±0.1 | 3.5±0.1 | 5.0±0.1 | | | |
| 92821-040/040LF | OTHERS | 36,67 | 1,17,34 35,51,68 | TOP W\O LOCATOR | BLACK | WITH |
| 92821-080/080LF | OTHERS | 36,67 | 1,17,34 35,51,68 | TOP W\O LOCATOR | BLACK | WITHOUT |



NOTES:

- TRUE POSITION IS A FREE GRID TO THE PIN PATTERN ITSELF.
- SEE TA-946 FOR PCB LAYOUT.
- MATERIAL:
PLASTIC: LCP UL94V-0
PIN: PHOSPHOR BRONZE
- FINISH (PIN):
UNDER PLATING: 0.5 µM MIN. Ni
CONTACT AREA: 0.1 µM MIN. GOLD OVER 0.5 µM MIN. Pd-Ni
SOLDER AREA(TIN LEAD OPTION): 2.5 µM MIN. Sn-Pb
SOLDER AREA(LEAD FREE OPTION): 2.5 µM MIN. PURE TIN

| | | | | | | | |
|-------------|----------|---------------------------------------|------|---------------|-------------------|---------------------------------------|--|
| mat'l. code | | tolerances unless otherwise specified | | CUSTOMER COPY | | Electronics FCI www.fciconnect.com | |
| ltr | ecn no | dr | date | linear | .XX±.13 | projection | title |
| k | | | | angles | .XXX±.051 | 0° ±2° | 68 POSITION DOUBLE DECK TYPE-123 EJECT HEADER |
| | | | | dr | D.SHEAFFER 6/9/93 | MM | product family MCS |
| | | | | engr | D.BRANN 6/9/93 | scale | size dwg no |
| | | | | chr | D.BRANN 6/9/93 | 2:1 | A4 92821 |
| | | | | appd | D.BRANN 6/9/93 | | code |
| sheet | revision | | | | | | sheet |
| index | sheet | | | | | | 5 of |

ACAD

PDM: Rev:K

STATUS Released

cage code

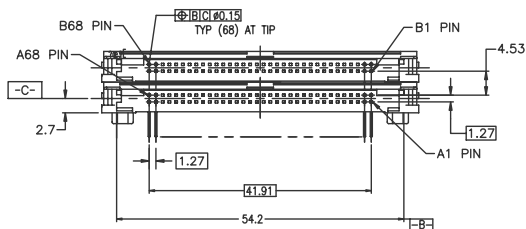
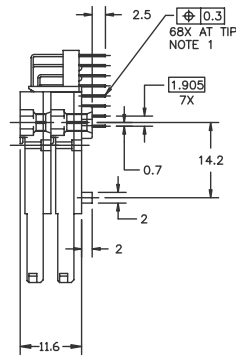
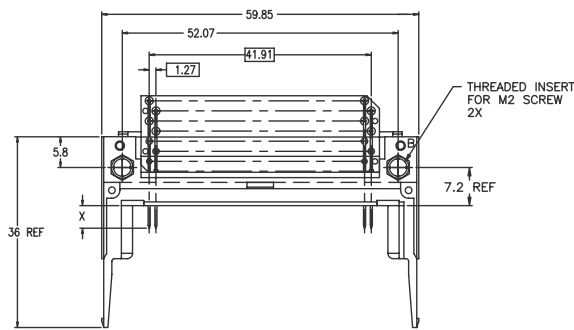
26

Printed: Oct 12, 2014

Tous droits strictement réservés. Reproduction ou communication à des tiers
interdite sous quelque forme que ce soit sans autorisation écrite du propriétaire.
Propriété de c FCI. Droits de reproduction FCI.

All rights strictly reserved. Reproduction or issue to third parties in any
form whatever is not permitted without written authority from the proprietor.
Property of FCI. Copyright FCI.

| | | | | | |
|-----------------|----------|---------|---------------------|--------------------|---------|
| PRODUCT NO. | DIM X | | | MOUNTING STYLE | COLOR |
| | 4.25±0.1 | 3.5±0.1 | 5.0±0.1 | | |
| 92821-540/540LF | OTHERS | 36,67 | 1,17,34 35,51,68 | BOTTOM W/O LOCATOR | NATURAL |



NOTES:

- TRUE POSITION IS A FREE GRID TO THE PIN PATTERN ITSELF.
- SEE TA-946 FOR PCB LAYOUT.
- MATERIAL:
PLASTIC: LCP UL94V-0
PIN: PHOSPHOR BRONZE
- FINISH (PIN):
UNDER PLATING: 0.5 µM MIN. Ni
CONTACT AREA: 0.1 µM MIN GOLD OVER 0.5 µM MIN. Pd-Ni
SOLDER AREA(TIN LEAD OPTION): 2.5 µM MIN. Sn-Pb
SOLDER AREA(LEAD FREE OPTION): 2.5 µM MIN. PURE TIN

| | | | | | | | |
|-------------|----------|---------------------------------------|------|---------------|-------------------|---------------------------------------|-------------------------|
| mat'l. code | | tolerances unless otherwise specified | | CUSTOMER COPY | | Electronics FCI www.fciconnect.com | |
| ltr | ecn no | dr | date | linear | .XX±.13 | projection | title |
| K | | | | angles | .XXX±.051 | MM | 68 POSITION DOUBLE DECK |
| | | | | dr | 0° ±2' | scale | TYPE-123 EJECT HEADER |
| | | | | enrg | D.SHEAFFER 6/9/93 | 2:1 | product family MCS |
| | | | | chr | D.BRANN 6/9/93 | A4 | size dwg no |
| | | | | appd | D.BRANN 6/9/93 | 92821 | code |
| sheet | revision | | | | | | 6 of |
| index | sheet | | | | | | |

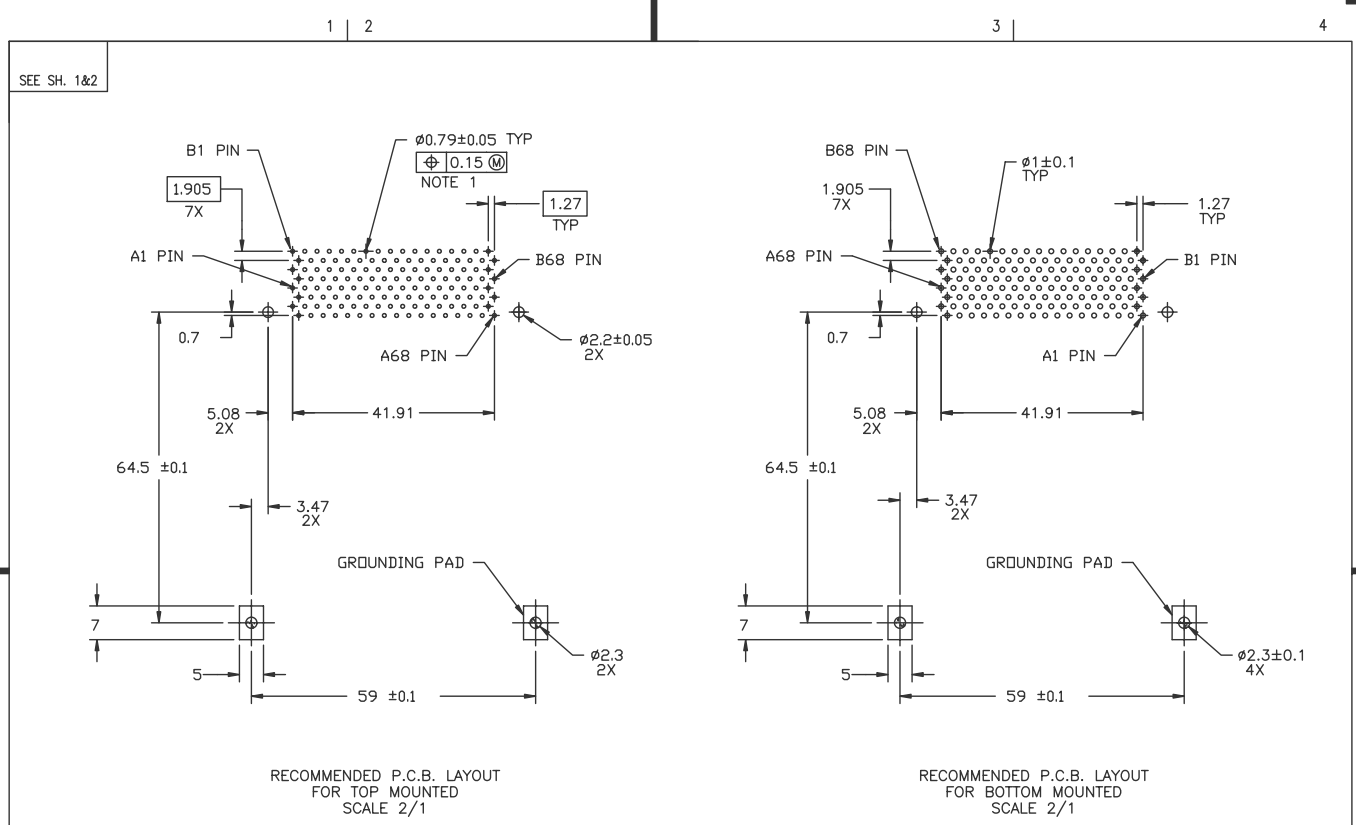
ACAD

PDM: Rev:K

STATUS Released 2.6 Printed: Oct 12, 2014

Tous droits strictement réservés. Reproduction ou communication à des tiers interdite sous quelque forme que ce soit sans autorisation écrite du propriétaire. Property of FCI. Droits de reproduction FCI.

All rights strictly reserved. Reproduction or issue to third parties in any form whatever is not permitted without written authority from the proprietor. Property of FCI. Copyright FCI.



| | | | | | | | |
|-------------|----------|---------------------------------------|------|---------------|-------------------|------------------------|--|
| mat'l. code | | tolerances unless otherwise specified | | CUSTOMER COPY | | www.fciconnect.com | |
| ltr | ecn no | dr | date | linear | .XX±.13 | projection | title |
| k | | | | | .XXX±.051 | | 68 POSITION DOUBLE DECK TYPE-123 EJECT HEADER |
| | | | | angles | 0° ±2' | | product family |
| | | | | dr | D.SHEAFFER 6/9/93 | MM | MCS |
| | | | | engr | D.BRANN 6/9/93 | | code |
| | | | | chr | D.BRANN 6/9/93 | 2:1 | — |
| | | | | appd | D.BRANN 6/9/93 | A4 | 92821 |
| sheet | revision | | | | | | size |
| index | sheet | | | | | | dwg no |
| | | | | | | | 7 of |

ACAD PDM: Rev:K STATUS Released cage code 26 Printed: Oct 12, 2014