

## NATALIE lens for Osram Ostar



- Lens designed for Osram Ostar with primary lens. Works well for Cree Xlamp XR-E, Seoul P4 & Acriche and Luxeon K2 as well, but needs another optical positioning
- Lens material optical grade PC with high UV and temperature resistance (135°C/260°F). Allows use of high current and temperature conditions
- Best available optical efficiency
- Fastening to heat sink with 3 snap fits
- Compact dimensions: lens height is 6 mm, diameter 35.6 mm.
- **Especially suitable for MR16 replacement modules**

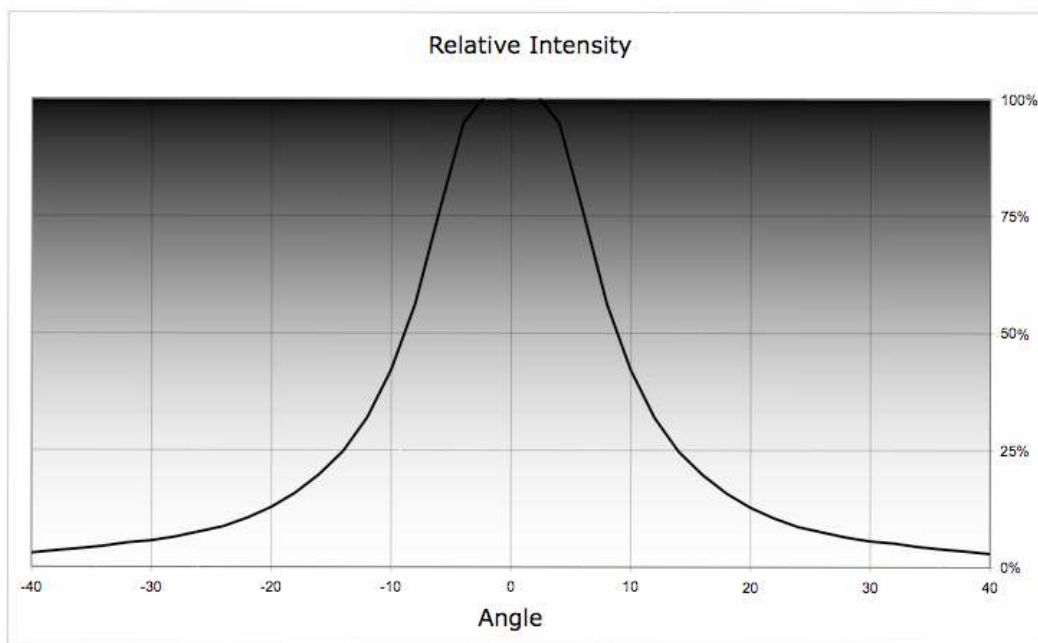
NAME	ORDERING CODE	FWHM Angle
NATALIE Lens for Ostar	C10267_Natalie	±9°

© Ledil Oy - Subject to change without prior notice

Ledil Oy  
 Tehdaskatu 13  
 FIN-24100 SALO, Finland

[www.ledil.com](http://www.ledil.com)  
 email: [ledil@ledil.com](mailto:ledil@ledil.com)  
 FAX: +358-2-733 8001

2009-03-06

**MEASUREMENTS****PACKAGING**

Lenses are packed in carton boxes of 1,000 pieces in each box.

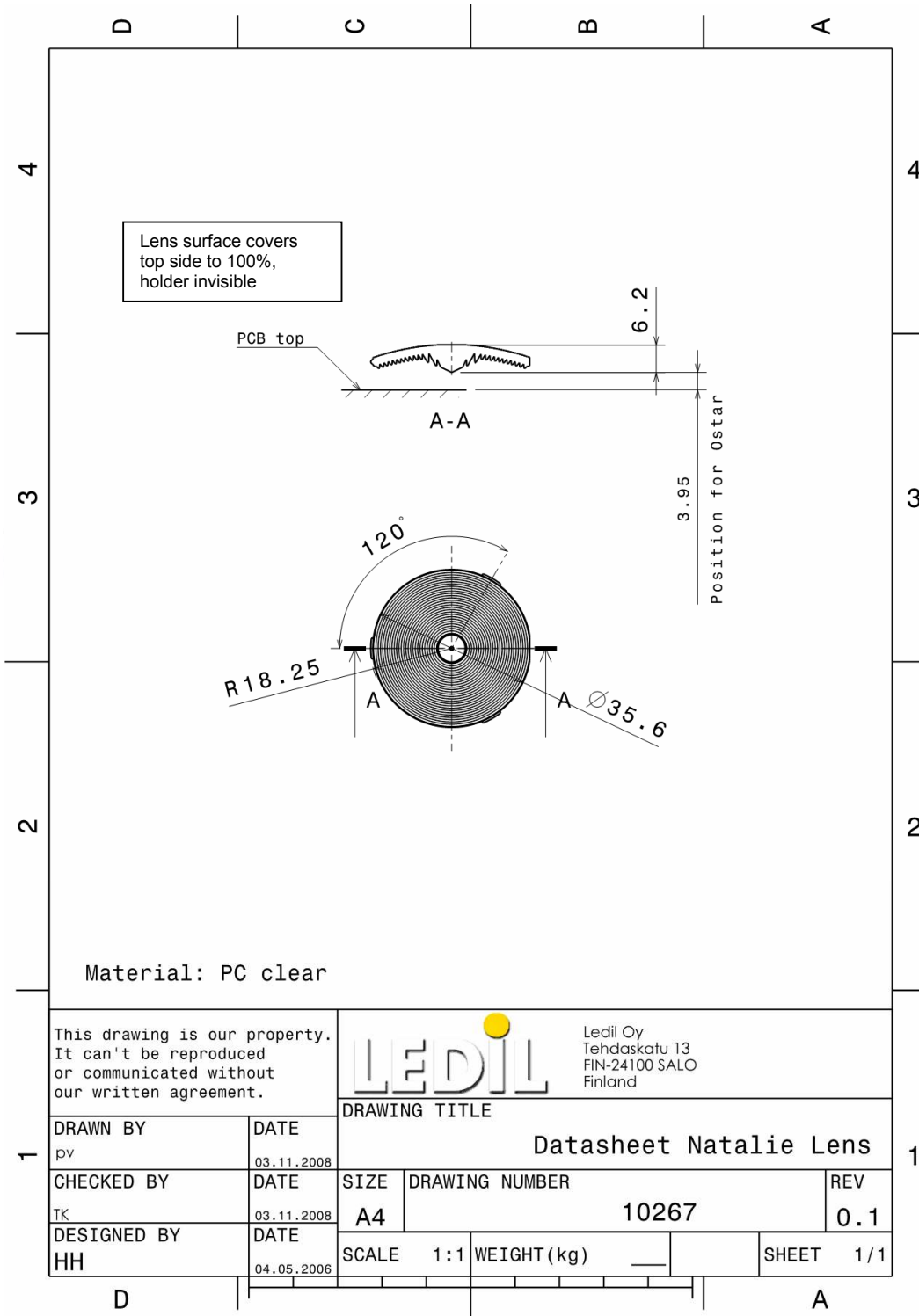
© Ledil Oy - Subject to change without prior notice

Ledil Oy  
Tehdaskatu 13  
FIN-24100 SALO, Finland

[www.ledil.com](http://www.ledil.com)  
email: [ledil@ledil.com](mailto:ledil@ledil.com)  
FAX: +358-2-733 8001

2009-03-06

## DRAWING



© Ledil Oy - Subject to change without prior notice

Ledil Oy  
Tehdaskatu 13  
FIN-24100 SALO, Finland

[www.ledil.com](http://www.ledil.com)  
email: [ledil@ledil.com](mailto:ledil@ledil.com)  
FAX: +358-2-733 8001

2009-03-06