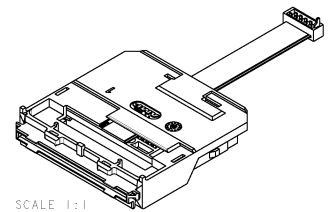
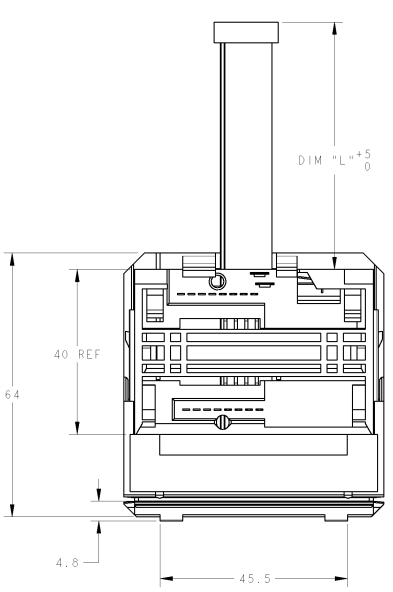
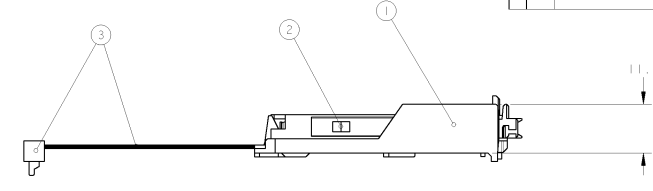
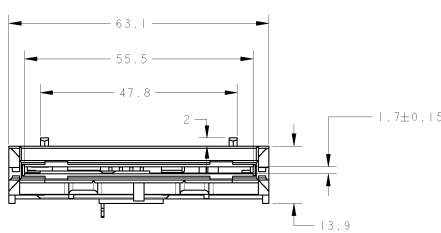


RELEASED FOR PUBLICATION
 BY TYCO ELECTRONICS CORPORATION. ALL RIGHTS RESERVED.

REV	DATE	BY	CHKD	APPROV
A	04/15/04	WBC/2044	RC	PJ
A1	01/15/05	RFB/2045	RC	PJ

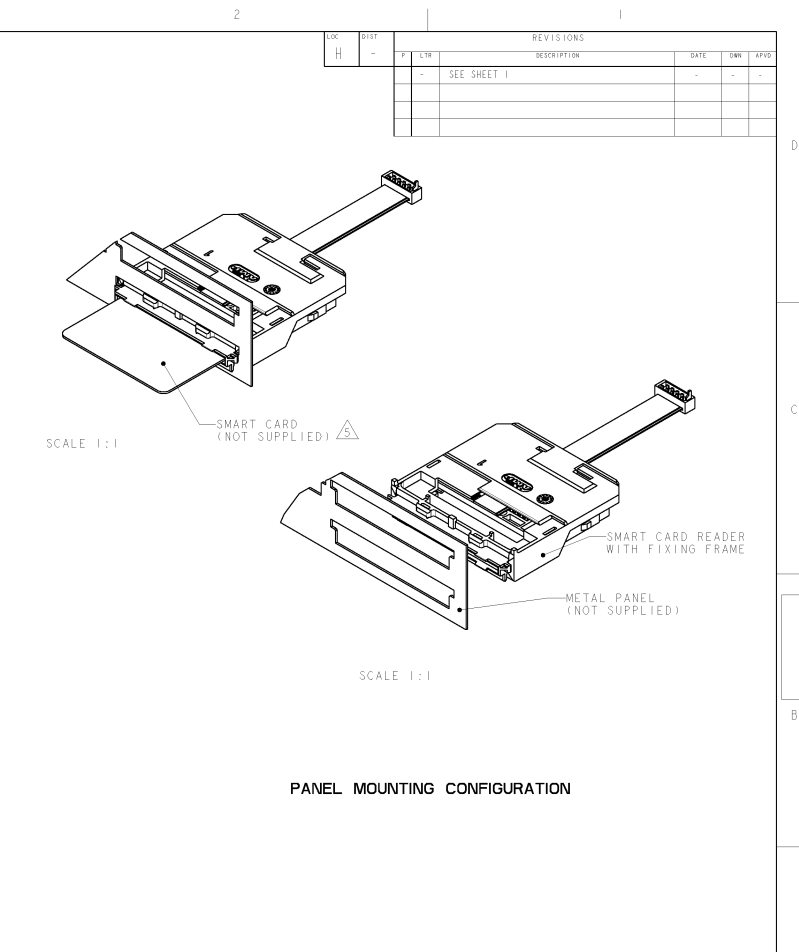
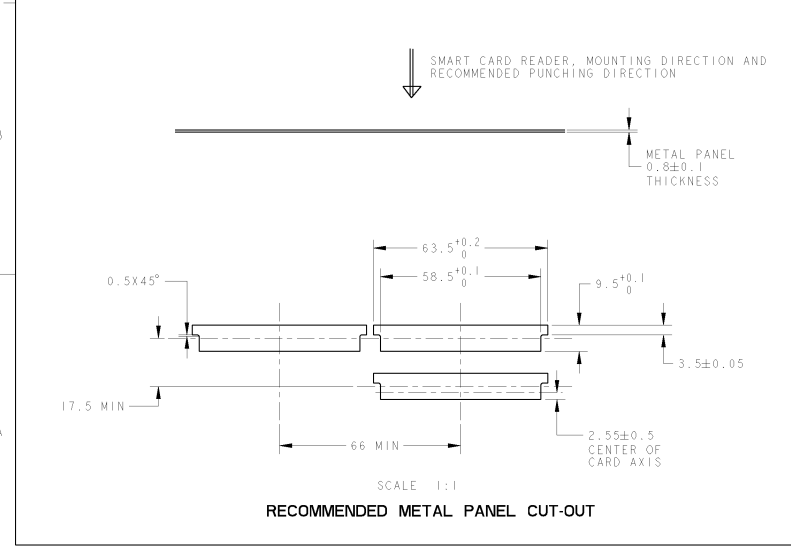
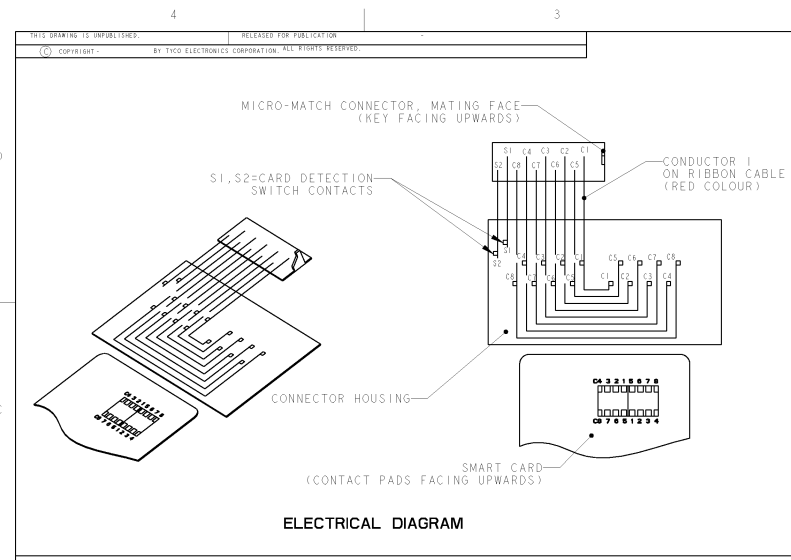


- △ SMART CARD READER : PBT G-F, BLACK, UL 94V0
 FIXING FRAME : ABS, BLACK, UL 94V0
 SIGNAL AND SWITCH CONTACTS : PHOSPHOR BRONZE.
- △ ALL CONTACTS : 0.00076 GOLD ON MATING AREAS,
 0.0025 TIN (LEADFREE/MATTE) ON SOLDER TAILS,
 ALL OVER 0.001 NICKEL.
- △ AMP P/N'S ASS'Y :
 - 5953497-1/-3/-5/-6/-8/-1--0 8 POSITIONS ISO 7816
 - 5953497-2/-4/-7 16 POSITIONS ISO/CP8 AFNOR
- 4 UL STYLE 2651 RIBBON CABLE PVC AND
 10 POSITIONS MICRO-MATCH CONNECTOR;
 TO BE MATED WITH
 I-215079-0 THROUGH HOLE VERSION OR I-188275-0 SMT VERSION
- △ AMP SMART CARD RECEPTACLE DESIGNED TO ACCEPT ISO 7810-7816 TYPE
 INTEGRATED CIRCUIT SMART CARDS (0.76MM REF. THICKNESS)
 SEE SHEET 2/2
- △ CONNECTOR MEETS EMV REQUIREMENTS

ASS'Y P/N 5953497	1-0	-8	-7	-6	-5	-4	-3	-2	-1	DESCRIPTION	ITEM
										RIBBON CABLE ASS'Y, L = 70mm	3
										RIBBON CABLE ASS'Y, L = 130mm	3
										RIBBON CABLE ASS'Y, L = 140mm	3
										RIBBON CABLE ASS'Y, L = 100mm	3
										RIBBON CABLE ASS'Y, L = 60mm	3
										SMART CARD READER ASS'Y : 8 POS.	2
										SMART CARD READER ASS'Y : 16 POS.	2
										FIXING FRAME -2	1

DIMENSIONS: mm UNLESS OTHERWISE SPECIFIED	TYPICAL DIMENSIONS FOR THE CONDUCTIVE TRACKS DIMENSIONS ONLY OPERATE SPEC/ISS.	DWG NO. 08-Dec-04 R. Coolen P. Jager P. Jager PRODUCT CODE 108-15174 APPLICATION SPEC - WEIGHT - CUSTOMER DRAWING	tyco Electronics TYCO ELECTRONICS NEDERLAND B.V. HERTOGENBOSCH, THE NETHERLANDS SMART CARD READER 0,76 mm; PANEL MOUNT WITH CABLE BLADE SWITCH, NORMALLY CLOSED SIZE CASE CODE DRAWING NO A2100779 C=5953497 SCALE 3:2 SHEET 1 OF 2 REV A1
---	--	---	---

AMP 1471-0 REV 50040000
 P1=ENGINEER DRAWING



DIMENSIONS: mm		TYCO ELECTRONICS ONLY USE OPERATING SPEC/ISS.	OWN: Coolen	08-Dec-04	tyco Electronics	TYCO ELECTRONICS NEDERLAND B.V. - HERTOENBOSCH, THE NETHERLANDS
MATERIAL: ZN15		PLC #0.5 PLC #0.3 PLC #0.15 PLC #0.813 PLC #0.000	APPRO: Jager	PRODUCT SPEC	SMART CARD READER 0,76 mm; PANEL MOUNT WITH CABLE BLADE SWITCH, NORMALLY CLOSED	
WEIGHT: -		APPLICATION SPEC	SIZE: A2	CAGE CODE: 100779	DRINKING NO: C=5953497	RESTRICTED TO: -
CUSTOMER DRAWING		SCALE: 3:2	SHEET 2 OF 2		REV A1	

AMP 1471-0 REV 2004000