

- Designed to meet UL1950 and IEC950 safety requirements
- S560-6600-T8 & S560-6600-K7 UL file number is E150991
- Operating temperature range: -40° C to +85° C
- Meets IEC 695, 2-2 flammability requirements
- PWB Process Capability: standard printed wiring board assembly techniques, total-immersion cleaning
- Reliability testing: shock, vibration, temperature cycling, temperature - humidity - bias

ELECTRICAL SPECIFICATIONS AT 25° C

Part Number	Package	Turns Ratio ¹ ± 2%	Inductance ² µH ± 5%		Leakage ⁶ Inductance ¹ µH max	DCR Ω max				Direct Capacitance pF max	Dielectric Rating Vrms min
		(1-5) : (10-6)	(1-5) ³	(10-6) ⁴	(1-5) ⁵	(1-4)	(2-5)	(10-7)	(9-6)	between (1-5) & (10-6) ⁵	(1-5) & (10-6) ¹
S560-6600-T8	SMD	1 : 1.4	238	475	10	0.5	0.5	0.6	0.6	15	1500
0560-6600-88	THT	1 : 1.4	225	441	10	0.4	0.4	0.5	0.5	15	1500
S560-6600-K7	SMD	1 : 1.4	225	441	10	0.4	0.4	0.5	0.5	15	1500
0560-6600-T3	THT	1 : 1.4	225	441	10	0.4	0.4	0.5	0.5	15	1500

1. connect terminals 2 to 4 & 7 to 9
2. measured at 10 kHz, 0.1 Vrms
3. connect terminals 2 to 4
4. connect terminals 7 to 9
5. short terminals 6, 7, 9, 10
6. measured at 100 kHz, 0.1 Vrms

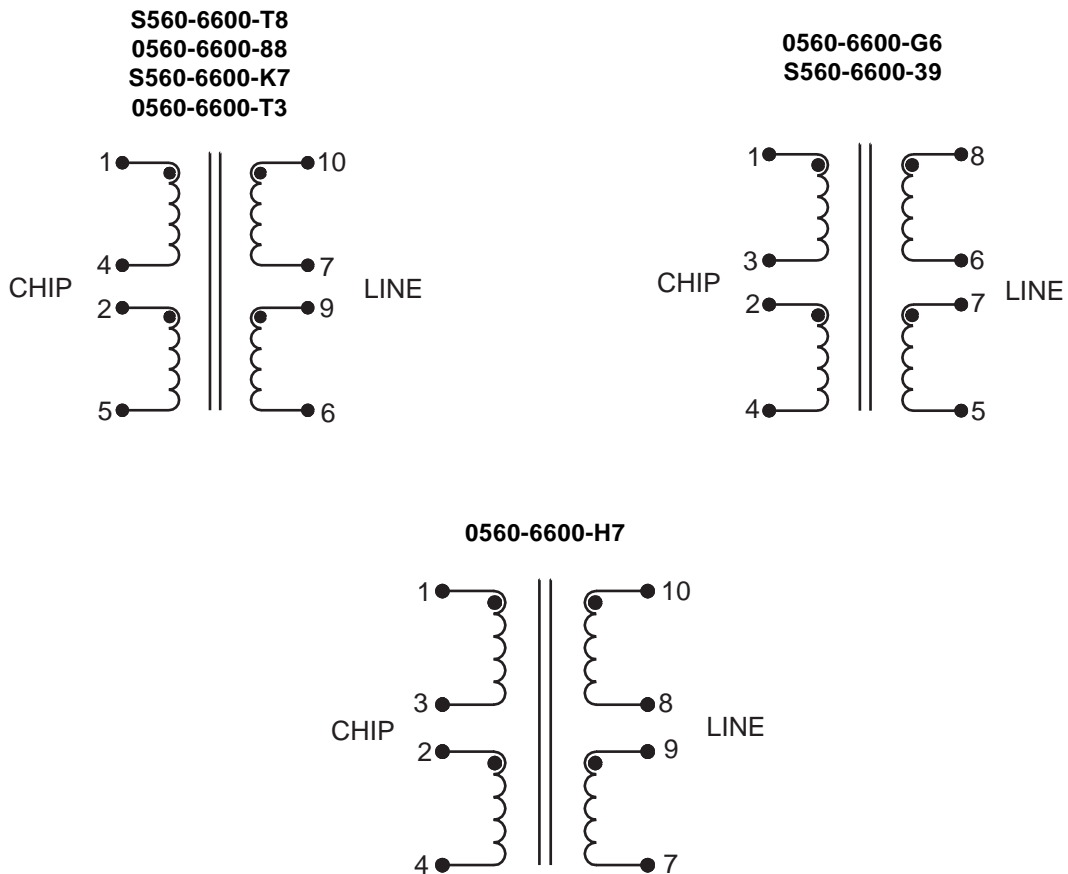
Part Number	Package	Turns Ratio ¹ ± 2%	Inductance ² µH ± 5%		Leakage Inductance ⁶ µH max	DCR Ω max				Direct Capacitance pF max	Dielectric Rating Vrms
		(1-4) : (10-7)	(1-4) ³	(10-7) ⁴	(1-4) ⁵	(1-3)	(2-4)	(10-8)	(9-7)	between (1-4) & (10-7) ¹	(1-5) & (10-6) ¹
0560-6600-H7	THT	1 : 1.4	225	441	10	0.4	0.4	0.5	0.5	15	1500

1. connect terminals 2 to 3 & 8 to 9
2. measured at 10 kHz, 0.1 Vrms
3. connect terminals 2 to 3
4. connect terminals 8 to 9
5. connect terminals 2 to 3 & 8 to 9, short terminals 7, 8, 9, 10
6. measured at 100 kHz, 0.1 Vrms

Part Number	Package	Turns Ratio ¹ ± 2%	Inductance ² µH ±5%		Leakage Inductance ⁶ µH max	DCR Ω max						Direct Capacitance pF max	Dielectric Rating Vrms
		(1-4) : (8-5)	(1-4) ³	(8-5) ⁴	(1-4) ⁵	(1-3)	(1-4)	(2-4)	(7-5)	(8-5)	(8-6)	between (1-4) & (8-5) ¹	(1-4) & (8-5) ¹
S560-6600-39	SMD	1 : 1.4	225	441	5	0.45 - 0.65	-	0.45 - 0.65	0.6 - 0.8	-	0.6 - 0.8	20	1500
0560-6600-G6	THT	1 : 1.4	225	441	10	-	1.4	-	-	2.25	-	33.5	1500

1. connect terminals 2 to 3 & 6 to 7
2. measured at 10 kHz, 0.1 Vrms
3. connect terminals 2 to 3
4. connect terminals 6 to 7
5. short terminals 5, 6, 7, & 8, connect terminals 2 to 3 & 6 to 7
6. measured at 100 kHz, 0.1 Vrms

SCHEMATIC



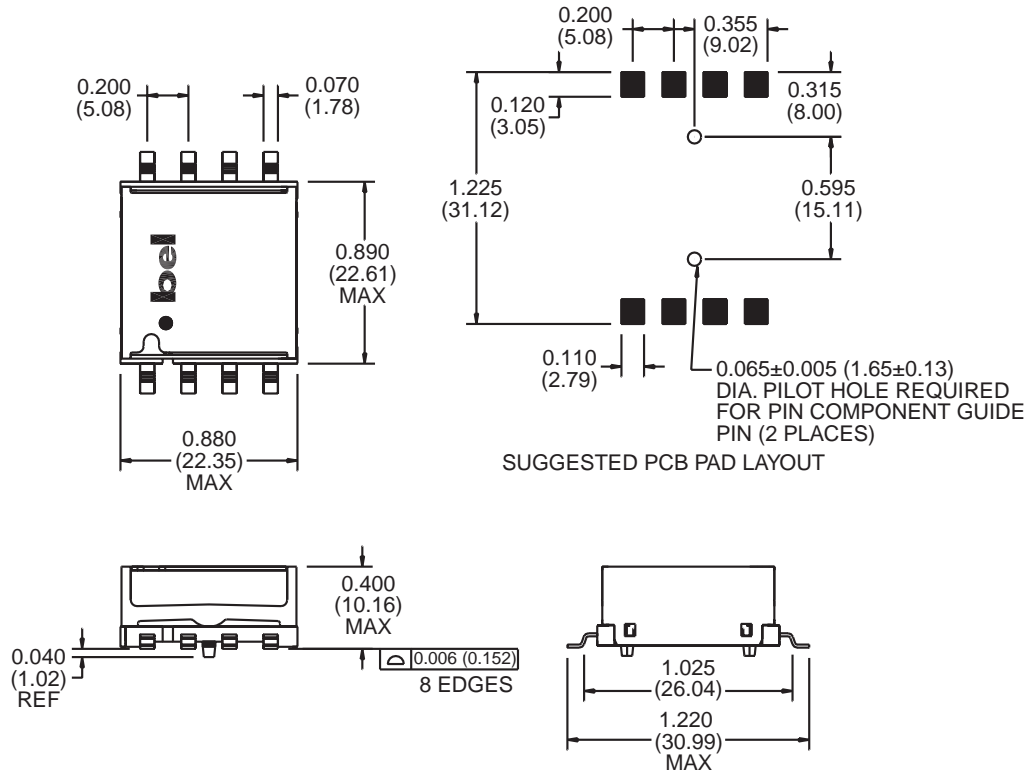
ADSL Magnetics GlobeSpan ADSL DMT CO



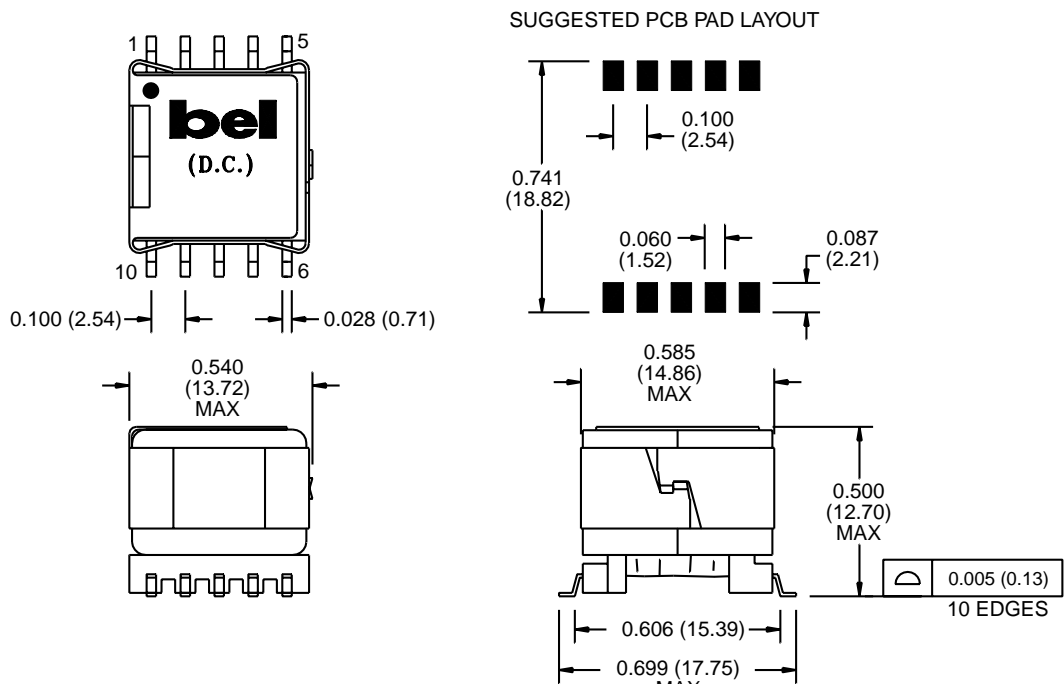
TM00310

MECHANICAL

S560-6600-39



S560-6600-T8
S560-6600-K7



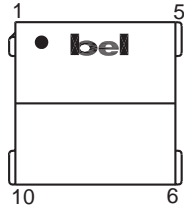
©2000 Bel Fuse Inc. Specifications subject to change without notice. 10.00

Bel Fuse Inc. 198 Van Vorst Street, Jersey City, NJ 07302 • Tel 201-432-0463 • Fax 201-432-9542 • www.belfuse.com

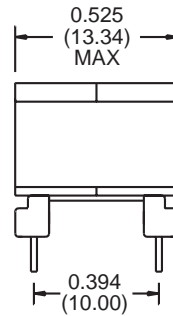
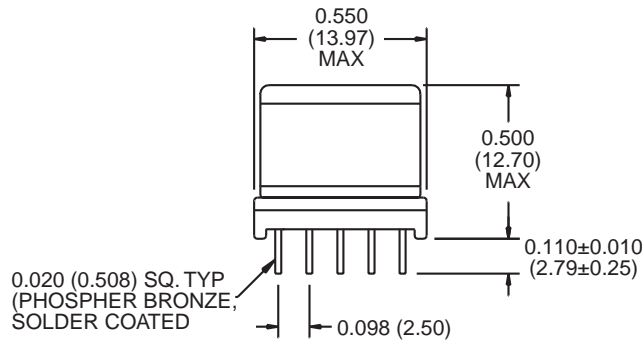
T3-37

MECHANICAL

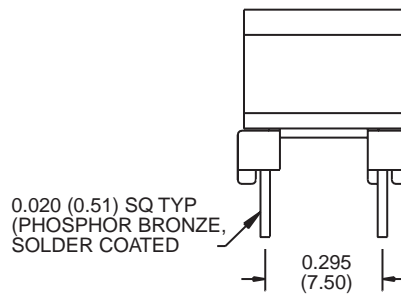
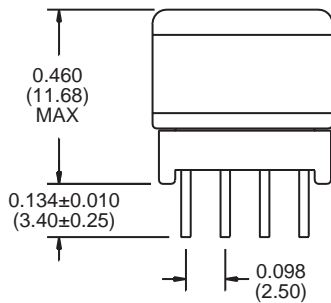
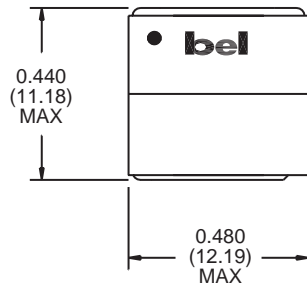
0560-6600-88
0560-6600-H7
0560-6600-T3'



1. Pin #3 omitted from 0560-6600-T3.



0560-6600-G6



©2000 Bel Fuse Inc. Specifications subject to change without notice. 10.00

CORPORATE

Bel Fuse Inc.
198 Van Vorst Street
Jersey City, NJ 07302
Tel 201-432-0463
Fax 201-432-9542
www.belfuse.com

T3-38

FAR EAST

Bel Fuse Ltd.
8F / 8 Luk Hop Street
San Po Kong
Kowloon, Hong Kong
Tel 852-2328-5515
Fax 852-2352-3706
www.belfuse.com

EUROPE

Bel Fuse Europe Ltd.
Preston Technology Management Centre
Marsh Lane, Suite F23, Preston
Lancashire, PR1 8UD, U.K.
Tel 44-1772-556601
Fax 44-1772-888366
www.belfuse.com