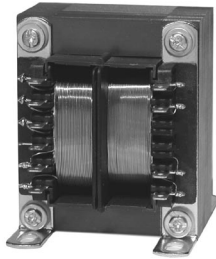






LAMINATED TRANSFORMERS

Low Frequency, Open-Style Laminated, International High Power Series



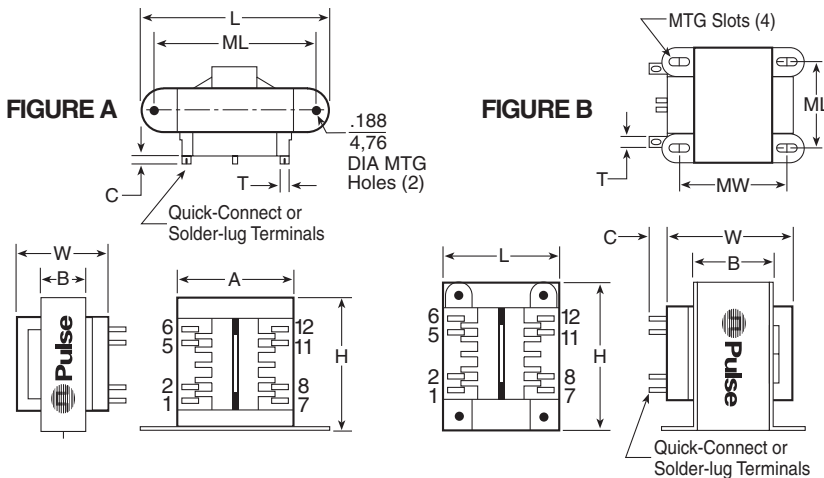
AGENCY APPROVALS

- UL, 506, File E73539
- UL Recognized Class B
- UL 1446, File E179499
- CSA 22.2#66, File LR68051-2
- TUV, EN61558

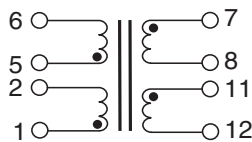





- ⊕ Chassis mounting
- ⊕ Dual bobbin; double reinforced insulation
- ⊕ High (4000V) primary to secondary isolation
- ⊕ Non-concentric design - eliminates ESS and reduces primary to secondary capacitance
- ⊕ No crossover between primary/secondary leads
- ⊕ Baked resin provides environmentally-resistant finish

Mechanical



Schematic



| Part No. | VA | Secondary RMS Rating | |
|----------------|-----|----------------------|--------------|
| | | | |
| A41-25-10A1 | 25 | 10V C.T. @ 2.5A | 5V @ 5.0A |
| A41-43-10A2 | 43 | 10V C.T. @ 4.3A | 5V @ 8.6A |
| A41-80-10A3 | 80 | 10V C.T. @ 8.0A | 5V @ 16.0A |
| A41-130-10A4 | 130 | 10V C.T. @ 13.0A | 5V @ 26.0A |
| A41-175-10A5 | 175 | 10V C.T. @ 17.5A | 5V @ 35.0A |
| A41-25-12A7 | 25 | 12.6V C.T. @ 2.0A | 6.3V @ 4.0A |
| A41-43-12A8 | 43 | 12.6V C.T. @ 3.4A | 6.3V @ 6.8A |
| A41-80-12A9 | 80 | 12.6V C.T. @ 6.3A | 6.3V @ 12.6A |
| A41-130-12A10 | 130 | 12.6V C.T. @ 10.3A | 6.3V @ 20.6A |
| A41-175-12A11 | 175 | 12.6V C.T. @ 14.0A | 6.3V @ 28.0A |
| A41-25-16A13 | 25 | 16V C.T. @ 1.6A | 8V @ 3.2A |
| A41-43-16A14 | 43 | 16V C.T. @ 2.7A | 8V @ 5.4A |
| A41-80-16A15 | 80 | 16V C.T. @ 5.0A | 8V @ 10.0A |
| A41-130-16A16 | 130 | 16V C.T. @ 8.1A | 8V @ 16.2A |
| A41-175-16A17 | 175 | 16V C.T. @ 11.0A | 8V @ 22.0A |
| A41-25-20A19 | 25 | 20V C.T. @ 1.25A | 10V @ 2.5A |
| A41-43-20A20 | 43 | 20V C.T. @ 2.2A | 10V @ 4.4A |
| A41-80-20A21 | 80 | 20V C.T. @ 4.0A | 10V @ 8.0A |
| A41-130-20A22 | 130 | 20V C.T. @ 6.5A | 10V @ 13.0A |
| A41-175-20A23 | 175 | 20V C.T. @ 8.8A | 10V @ 17.6A |
| A41-25-24A25 | 25 | 24V C.T. @ 1A | 12V @ 2A |
| A41-43-24A26 | 43 | 24V C.T. @ 1.8A | 12V @ 3.6A |
| A41-80-24A27 | 80 | 24V C.T. @ 3.3A | 12V @ 6.6A |
| A41-130-24A28 | 130 | 24V C.T. @ 5.4A | 12V @ 10.8A |
| A41-175-24A29 | 175 | 24V C.T. @ 7.3A | 12V @ 14.6A |
| A41-25-28A31 | 25 | 28V C.T. @ 0.9A | 14V @ 1.86A |
| A41-43-28A32 | 43 | 28V C.T. @ 1.5A | 14V @ 3.0A |
| A41-80-28A33 | 80 | 28V C.T. @ 2.8A | 14V @ 5.6A |
| A41-130-28A34 | 130 | 28V C.T. @ 4.6A | 14V @ 9.2A |
| A41-175-28A35 | 175 | 28V C.T. @ 6.25A | 14V @ 12.5A |
| A41-25-36A37 | 25 | 36V C.T. @ 0.7A | 18V @ 1.4A |
| A41-43-36A38 | 43 | 36V C.T. @ 1.2A | 18V @ 2.4A |
| A41-80-36A39 | 80 | 36V C.T. @ 2.2A | 18V @ 4.4A |
| A41-130-36A40 | 130 | 36V C.T. @ 3.6A | 18V @ 7.2A |
| A41-175-36A41 | 175 | 36V C.T. @ 4.8A | 18V @ 9.6A |
| A41-25-230A42 | 25 | 230V C.T. @ 0.11A | 115V @ 0.22A |
| A41-43-230A43 | 43 | 230V C.T. @ 0.19A | 115V @ 0.38A |
| A41-80-230A44 | 80 | 230V C.T. @ 0.35A | 115V @ 0.7A |
| A41-130-230A45 | 130 | 230V C.T. @ 0.57A | 115V @ 1.14A |
| A41-175-230A46 | 175 | 230V C.T. @ 0.76A | 115V @ 1.52A |

Dimensions (inches)

| VA (size) | Wt. (lb.) | L | W | H | A | B | C | T | ML | MW | MTG. | FIG. |
|-----------|-----------|-------|-------|-------|------|-------|-------|-------|-------|-------|------|------|
| 25 | 1.25 | 2.812 | 1.875 | 2.312 | 2.00 | 1.125 | 0.330 | 0.187 | 2.375 | — | #6 | A |
| 43 | 1.60 | 3.125 | 2.062 | 2.687 | 2.25 | 1.125 | 0.312 | 0.187 | 2.812 | — | #6 | A |
| 80 | 2.80 | 2.500 | 2.375 | 3.050 | — | 1.375 | 0.330 | 0.187 | 2.000 | 2.180 | #6 | B |
| 130 | 4.10 | 2.812 | 2.875 | 3.380 | — | 1.625 | 0.395 | 0.187 | 2.250 | 2.500 | #8 | B |
| 175 | 5.50 | 3.125 | 2.875 | 3.750 | — | 1.625 | 0.395 | 0.187 | 2.500 | 2.500 | #8 | B |

USA 858 674 8100 • Germany 49 7032 7806 0 • Singapore 65 6287 8998 • Shanghai 86 21 54643211 / 2 • China 86 769 85538070 • Taiwan 886 3 4641811