



Features

- Formerly *J.W.Miller* model
- Current rating up to 200 mA
- Inductance range: 100 μ H to 33,000 μ H
- High Q
- RoHS compliant*

Applications

- DC/DC converters
- Power supplies
- Desktop notebooks
- Output chokes

RL187 Series - Radial Lead RF Choke

Electrical Specifications (@ 25 °C)

Part Number	Inductance (μ H)	Tol.	Q (Min.)	Test Frequency		SRF (MHz) Typ.	DCR (Ω) Max.	I dc (mA)
				L	Q			
RL187-101J-RC	100	$\pm 5\%$	80	796 KHz	796 KHz	5.3	2.0	200
RL187-121J-RC	120	$\pm 5\%$	80	796 KHz	796 KHz	4.5	2.0	200
RL187-151J-RC	150	$\pm 5\%$	80	796 KHz	796 KHz	3.8	2.0	200
RL187-181J-RC	180	$\pm 5\%$	80	796 KHz	796 KHz	3.3	3.0	200
RL187-221J-RC	220	$\pm 5\%$	80	796 KHz	796 KHz	2.9	3.0	200
RL187-271J-RC	270	$\pm 5\%$	80	796 KHz	796 KHz	2.6	3.0	200
RL187-331J-RC	330	$\pm 5\%$	80	796 KHz	796 KHz	2.3	4.0	200
RL187-391J-RC	390	$\pm 5\%$	80	796 KHz	796 KHz	2.1	4.0	200
RL187-471J-RC	470	$\pm 5\%$	80	796 KHz	796 KHz	1.9	4.0	200
RL187-561J-RC	560	$\pm 5\%$	80	796 KHz	796 KHz	1.7	4.0	200
RL187-681J-RC	680	$\pm 5\%$	80	796 KHz	796 KHz	1.6	4.0	200
RL187-821J-RC	820	$\pm 5\%$	80	796 KHz	796 KHz	1.4	6.0	200
RL187-102J-RC	1000	$\pm 5\%$	90	252 KHz	252 KHz	1.3	6.0	150
RL187-122J-RC	1200	$\pm 5\%$	90	252 KHz	252 KHz	1.2	9.0	150
RL187-152J-RC	1500	$\pm 5\%$	90	252 KHz	252 KHz	1.1	9.0	150
RL187-182J-RC	1800	$\pm 5\%$	90	252 KHz	252 KHz	1.0	9.0	100
RL187-222J-RC	2200	$\pm 5\%$	90	252 KHz	252 KHz	0.9	13	100
RL187-272J-RC	2700	$\pm 5\%$	90	252 KHz	252 KHz	0.8	13	100
RL187-332J-RC	3300	$\pm 5\%$	90	252 KHz	252 KHz	0.7	13	100
RL187-392J-RC	3900	$\pm 5\%$	90	252 KHz	252 KHz	0.6	13	50
RL187-472J-RC	4700	$\pm 5\%$	90	252 KHz	252 KHz	0.6	18	50
RL187-562J-RC	5600	$\pm 5\%$	90	252 KHz	252 KHz	0.5	18	50
RL187-682J-RC	6800	$\pm 5\%$	90	252 KHz	252 KHz	0.5	26	50
RL187-822J-RC	8200	$\pm 5\%$	90	252 KHz	252 KHz	0.4	26	50
RL187-103J-RC	10,000	$\pm 5\%$	100	79.6 KHz	79.6 KHz	0.4	40	40
RL187-123J-RC	12,000	$\pm 5\%$	100	79.6 KHz	79.6 KHz	0.4	40	40
RL187-153J-RC	15,000	$\pm 5\%$	100	79.6 KHz	79.6 KHz	0.4	60	40
RL187-183J-RC	18,000	$\pm 5\%$	100	79.6 KHz	79.6 KHz	0.3	60	30
RL187-223J-RC	22,000	$\pm 5\%$	100	79.6 KHz	79.6 KHz	0.3	80	30
RL187-273J-RC	27,000	$\pm 5\%$	100	79.6 KHz	79.6 KHz	0.3	80	30
RL187-333J-RC	33,000	$\pm 5\%$	100	79.6 KHz	79.6 KHz	0.3	80	30

General Specifications

Rated Current..... Inductance drop 10 %
Operating Temperature

..... -55 °C to +105 °C

Storage Temperature

..... -55 °C to +105 °C

Materials

Core Material..... Ferrite

Wire Enameled copper

Terminal Coating..... Sn

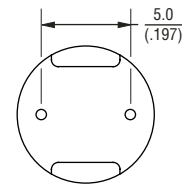
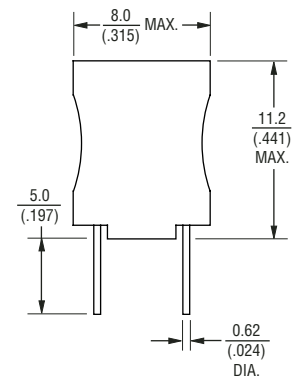
Marking

..... Value code on side of inductor

Packaging

Standard..... 100 pcs. per bag

Product Dimensions



DIMENSIONS: $\frac{\text{MM}}{(\text{INCHES})}$

How To Order

RL187 - 472J - RC

Model _____

Value/Tolerance Code (see table) _____

Compliance Code _____

RC = RoHS Compliant

Example:

RL187-472J-RC = 4700 μ H, $\pm 5\%$

Electrical Schematic



REV. 02/09

*RoHS Directive 2002/95/EC Jan 27 2003 including Annex.

Specifications are subject to change without notice.

Customers should verify actual device performance in their specific applications