

### Tools



**Crimping Tool**  
RSZ.HE-HN.D-HVT 1-1105850-8



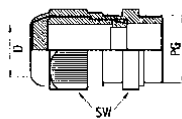
**Extraction Tool**  
AWZG-HN.D-RSZ 0-1105550-8 (for HN.D)



**Insertion Tool**  
1-1105606-8 (for HN.D and HE)

### Cable Fittings and Accessories

#### Gland Fitting, Plastic

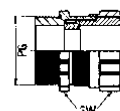


PG	D min	D max	SW
11	5	10	22
13.5	6	12	24
16	10	14	27
21	13	18	33
29	18	25	42
36	22	32	53
42	32	38	60

Part No.	Description	PG Size
1-1106005-7	HUT.11.P	11.0
2-1106005-7	HUT.13.P	13.5
3-1106005-7	HUT.16.P	16.0
4-1106005-7	HUT.21.P	21.0
5-1106005-7	HUT.29.P	29.0
6-1106005-7	HUT.36.P	36.0
7-1106005-7	HUT.42.P	42.0

Protection: IP 68

#### Gland Fitting, Brass



PG	D min	D max	SW
11	5	10	20
13.5	6	12	22
16	10	14	24
21	13	18	30
29	18	25	40
36	22	32	50
42	30	38	57

Part No.	Description	PG Size
1-1106006-9	HUT.11.MS	11.0
2-1106006-9	HUT.13.MS	13.5
3-1106006-9	HUT.16.MS	16.0
4-1106006-9	HUT.21.MS	21.0
5-1106006-9	HUT.29.MS	29.0
6-1106006-9	HUT.36.MS	36.0
7-1106006-9	HUT.42.MS	42.0

Protection: IP 68

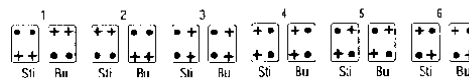
### Code Pin



Part No. 1-1106100-1  
Description SPB-M3



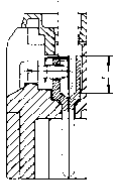
Coding with code pins  
For housings with 1 contact insert



Guide pins and bushes on request

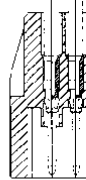
### Termination Information for Contact Inserts

#### Screw Terminal



- all versions with wire protection
- Wire cross section HA 2.5 mm<sup>2</sup>
- Wire cross section HE 2.5 mm<sup>2</sup>
- Wire cross section HSB 6 mm<sup>2</sup>

#### Crimp Terminal



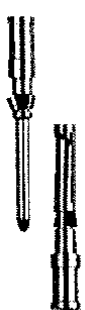
- Strip length HN.D – 8 mm
- Strip length HE /HA – 7.5 mm

#### Spring Clamp Terminal



- Wire cross section max. 2.5 mm<sup>2</sup>
- Wire cross section with wire pin max. 1.5 mm<sup>2</sup>

### Crimp Contacts – Series HN.D



Pin	Socket
<b>Silver Plated</b>	<b>Silver Plated</b>
1-1105050-1	1-1105051-1
2-1105050-1	2-1105051-1
3-1105050-1	3-1105051-1
4-1105050-1	4-1105051-1
5-1105050-1	5-1105051-1
<b>Gold Plated</b>	<b>Gold Plated</b>
1-1105050-2	1-1105051-2
2-1105050-2	2-1105051-2
3-1105050-2	3-1105051-2
4-1105050-2	4-1105051-2
5-1105050-2	5-1105051-2

### Crimp Contacts – Series HA/HE



Pin	Socket
<b>Silver Plated</b>	<b>Silver Plated</b>
1-1105100-1	1-1105101-1
2-1105100-1	2-1105101-1
3-1105100-1	3-1105101-1
4-1105100-1	4-1105101-1
5-1105100-1	5-1105101-1
<b>Gold Plated</b>	<b>Gold Plated</b>
1-1105100-2	1-1105101-2
2-1105100-2	2-1105101-2
3-1105100-2	3-1105101-2
4-1105100-2	4-1105101-2
5-1105100-2	5-1105101-2