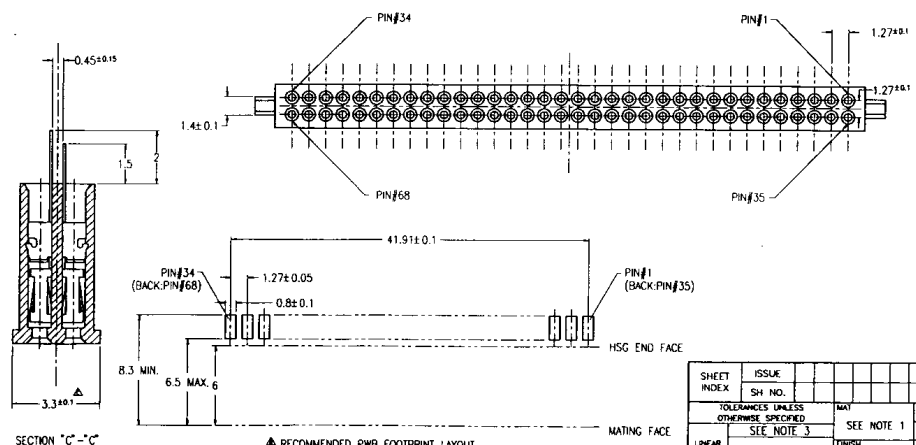
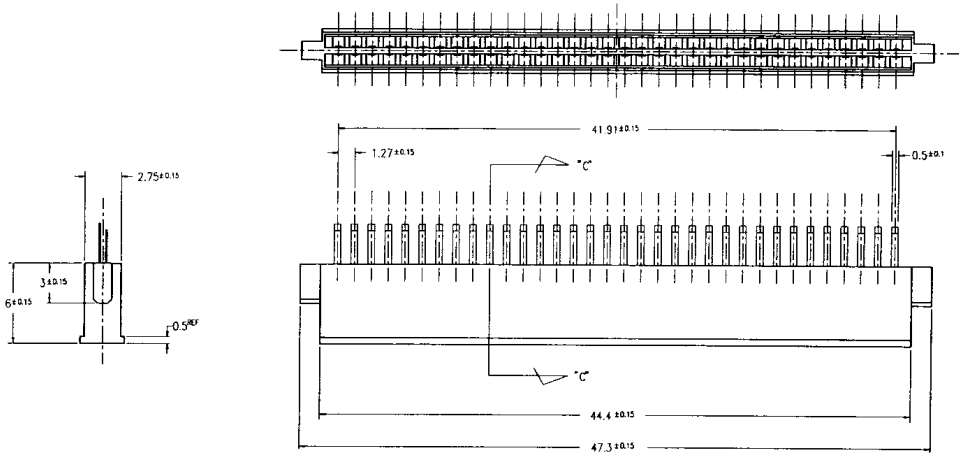


PRODUCT No.	PLUG HSG COLOR
90913-003	BLACK

REVISIONS				
REV.	DESCRIPTION	ECN	BY	DATE
A	RELEASED	J20251	KS	2/21/92
B	REVISED	J40024	KS	2/29/94
C	REVISED	J50277	KS	11/15/98



- NOTE
- MATERIAL
 CONTACT : BeCu 0.081
 HSG : LCP UL94V-0
 FINISH
 CONTACT : ALL OVER ----- Ni UNDER 0.5µm THK. MIN.
 SELECTIVE ----- Au PLATING 0.1µm THK. MIN.
 OVER Pd-Ni PLATING.
 SOLDER TAIL --- TIN LEAD 2.5µm THK. MIN.
 - FOR MATING MALE CONN.(HDR./EJECTOR HDR.)
 TO APPLY 68 POS. MALE CONN.(HDR./EJECTOR HDR.) BASED ON
 JEIDA AND PCMCIA SPECIFICATION
 - GENERAL TOLERANCE : ±0.25
 - PWB THICKNESS TO BE 0.45 MAX.

3P-0034 REV. C
 DO NOT SCALE PRINT THIS INFORMATION IS CONFIDENTIAL AND IS SUPPLIED TO YOU ON CONDITION THAT NO FURTHER DISCLOSURE IS MADE BY YOU TO OTHER THAN BERG PERSONNEL WITHOUT WRITTEN AUTHORIZATION FROM BERG ELECTRONICS JAPAN K.K.

SHEET INDEX	ISSUE SH. NO.	MAT	DR. <i>M. Kawaguchi</i>	DATE	CUSTOMER	TITLE
TOLERANCES UNLESS OTHERWISE SPECIFIED	SEE NOTE 3	FINISH	CHK. <i>R. Sugita</i>	11/16/98	CPY	IC CARD CONN. 68POS. PLUG ASSY
LINEAR	ANGLES	30	DATE	11/16/98	DATE	3/7/00

BERG ELECTRONICS

Printed: Nov 11 2007

PDM: Rev C Released