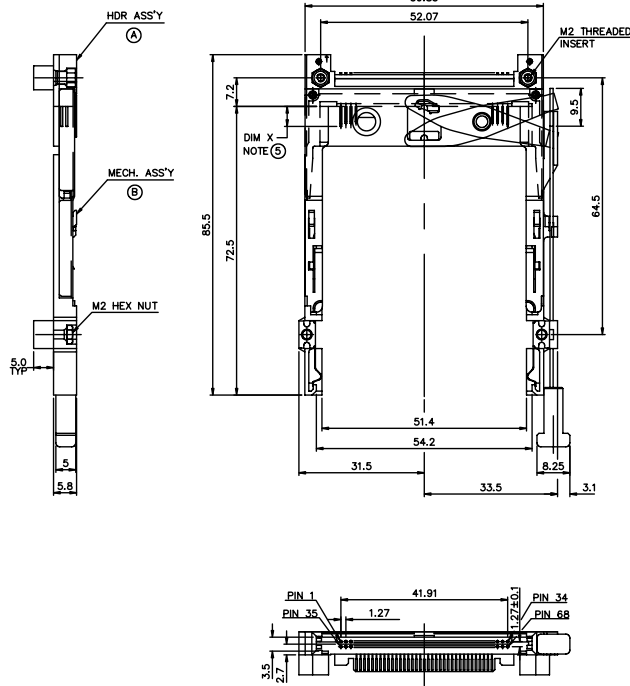


Tous droits strictement réservés. Reproduction ou communication à des tiers interdite sous quelque forme que ce soit sans autorisation écrite du propriétaire. Propriété de c FCI. Droits de reproduction FCI.

All rights strictly reserved. Reproduction or issue to third parties in any form whatever is not permitted without written authority from the proprietor. Property of FCI. Copyright FCI.

PRODUCT NUMBER
98204-250CA/250CALF



ABOVE P.C.B.
RIGHT PUSH-ROD

NOTES:

- 8mm MIN. CARD EJECT.
- EJECT TRAVEL: 9.5mm
- MATERIAL
 - PART (A) (HEADER ASS'Y)
PLASTIC : HOUSING ...LCP UL94V-O BLACK
PIN : PHOSPHOR BRONZE
PCB : FR4
 - PART (B) (EJECT MECHANISM ASS'Y)
PLASTIC : GUIDE; POLYPHTHARAMID UL94V-O BLACK
PUSH ROD CAP: POLYPHTHARAMID UL94V-O BLACK
PLATE AND PUSH ROD : STAINLESS STEEL
EMI CONTACT: PHOSPHOR BRONZE
- FINISH (PIN)
 - UNDER PLATING : 0.5µm Ni
 - CONTACT AREA : 0.1µm GOLD OVER 0.8µm Pd-Ni
 - SOLDER TAIL : 2.5µm Sn-Pb
 - : 2.5µm PURE Sn (-*****LF)

(5) DIM "X"

4.25±0.1	3.5±0.1	5.0±0.1
OTHERS	36,67	1,17,34,35,51,68

- RECOMMENDED SCREW TORQUE 1.0 TO 1.5 MAX in-lbs (1.2-1.7 cm-kgs).
- SEE TA-1052 FOR RECOMMENDED PCB LAYOUT, FOR MATING CONNECTOR PART NUMBER 91931-31169.
- KEEP-OUT ZONE- NO PCB TRACES SHOULD BE WITHIN 0.25mm OF ASSEMBLY STAND-OFFS.
- IF LEAD FREE P/N.THE HOUSING WILL WITHSTAND EXPOSURE TO 260°C PEAK TEMPERATURE FOR 10 SECONDS IN A WAVE SOLDER APPLICATION WITH A 1.00MM MINIMUM THICK CIRCUIT BOARD.
- IF LEAD FREE P/N.THE PRODUCT MEETS EUROPEAN UNION DIRECTIVES AND OTHER COUNTRY REGULATIONS AS DESCRIBED IN GS-22-008
- LEAD FREE P/N PACKAGING MEETS GS-14-920 SPECIFICATION

mat'l. code		tolerances unless otherwise specified		CUSTOMER COPY		Electronics FCI www.fciconnect.com	
ltr	ecn no	dr	date	linear	projection	title	
A	V91049	CGC	5/4/99	.XX±.13		5V EJECTOR HEADER ASS'Y.	
B	V92124	CGC	11/10/99	.XXX±.051		68 POS. SMT. TYPE I II III	
C	V00481	RGD	2/16/00	angles	0° ±2'	product family PCMCIA	
D	N05-0174	W B	06/16/05	dr	G.CLEMENS 5/4/99	size	dwg no
				engr	D.BRANN 5/4/99	scale	98204
				chr	D.BRANN 5/4/99	1:1	A4
				appd	D.BRANN 5/4/99		
sheet	revision	D	D	D		cage code	
index	sheet	1	2	3			sheet 1 of 3

ACAD

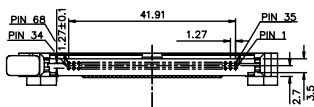
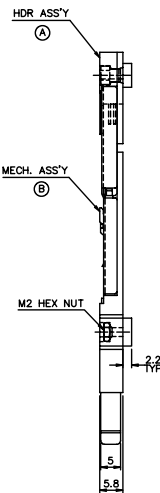
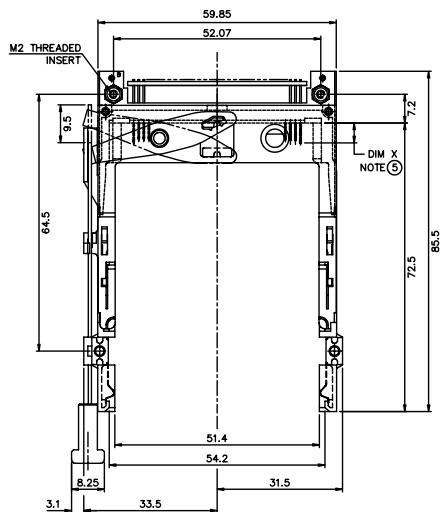
PDM: Rev:D

STATUS Released 2.6 Printed: Oct 12, 2014

Tous droits strictement réservés. Reproduction ou communication à des tiers interdite sous quelque forme que ce soit sans autorisation écrite du propriétaire. Propriété de c FCI. Droits de reproduction FCI.

All rights strictly reserved. Reproduction or issue to third parties in any form whatever is not permitted without written authority from the proprietor. Property of FCI. Copyright FCI.

PRODUCT NUMBER
98204-520CA/520CALF



BELOW P.C.B. MOUNT

NOTES:

1. 8mm MIN. CARD EJECT.
2. EJECT TRAVEL: 9.5mm
3. MATERIAL
 - 3.1 PART (A) (HEADER ASS'Y)
PLASTIC : HOUSING ...LCP UL94V-0 BLACK
PIN : PHOSPHOR BRONZE
PCB : FR4
 - 3.2 PART (B) (EJECT MECHANISM ASS'Y)
PLASTIC : GUIDE: POLYPHTHARAMID UL94V-0 BLACK
PUSH ROD CAP: POLYPHTHARAMID UL94V-0 BLACK
PLATE AND PUSH ROD : STAINLESS STEEL
EMI CONTACT: PHOSPHOR BRONZE
4. FINISH (PIN)
UNDER PLATING : 0.5µm Ni
CONTACT AREA : 0.1µm GOLD OVER 0.8µm Pd-Ni
SOLDER TAIL : 2.5µm Sn-Pb
 : 2.5µm PURE Sn (-*****LF)

5 DIM "X"

	4.25±0.1	3.5±0.1	5.0±0.1
OTHERS	36,67	1,17,34,35,51,68	

6. RECOMMENDED SCREW TORQUE 1.0 TO 1.5 MAX in-lbs (1.2-1.7 cm-kgs).
7. SEE TA-1052 FOR RECOMMENDED PCB LAYOUT, FOR MATING CONNECTOR PART NUMBER 91931-31169.
8. KEEP-OUT ZONE- NO PCB TRACES SHOULD BE WITHIN 0.25mm OF ASSEMBLY STAND-OFFS.
9. IF LEAD FREE P/N THE HOUSING WILL WITHSTAND EXPOSURE TO 260°C PEAK TEMPERATURE FOR 10 SECONDS IN A WAVE SOLDER APPLICATION WITH A 1.00MM MINIMUM THICK CIRCUIT BOARD.
10. IF LEAD FREE P/N THE PRODUCT MEETS EUROPEAN UNION DIRECTIVES AND OTHER COUNTRY REGULATIONS AS DESCRIBED IN GS-22-008
11. LEAD FREE P/N PACKAGING MEETS GS-14-920 SPECIFICATION

mat'l. code		tolerances unless otherwise specified		CUSTOMER COPY		Electronics FCI www.fciconnect.com	
ltr	ecn no	dr	date	linear	.X±.3	projection	title
D					.XX±.13		5V EJECTOR HEADER ASS'Y.
					.XXX±.051		68 POS. SMT. TYPE I II III
				angles	0° ±2'	product family	PCMCIA
				dr	G.CLEMENS 5/4/99	size	dwg no
				engr	D.BRANN 5/4/99	scale	1:1
				chr	D.BRANN 5/4/99	A4	98204
				appd	D.BRANN 5/4/99		sheet 2 of 3
sheet index	revision sheet						

ACAD

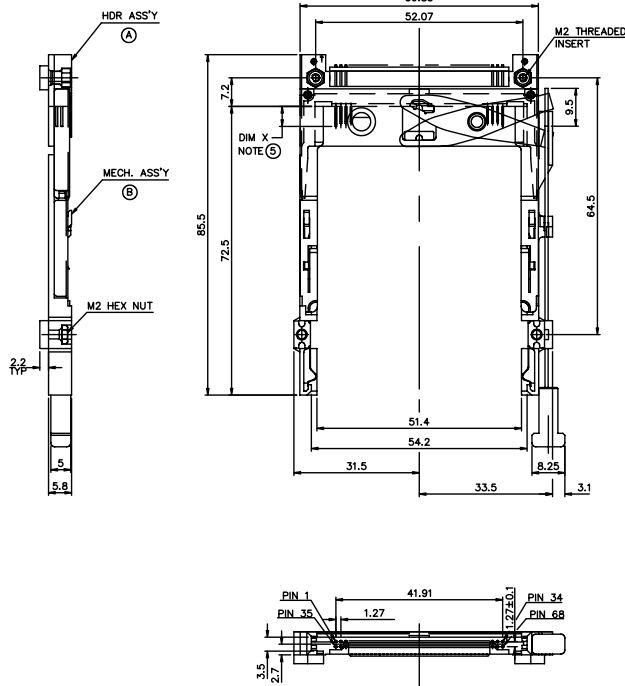
PDM: Rev:D

STATUS: Released 2.6 Printed: Oct 12, 2010

Tous droits strictement réservés. Reproduction ou communication à des tiers interdite sous quelque forme que ce soit sans autorisation écrite du propriétaire. Propriété de c FCI. Droits de reproduction FCI.

All rights strictly reserved. Reproduction or issue to third parties in any form whatever is not permitted without written authority from the proprietor. Property of FCI. Copyright FCI.

PRODUCT NUMBER
98204-020CA/020CALF



NOTES:

- 8mm MIN. CARD EJECT.
- EJECT TRAVEL: 9.5mm
- MATERIAL
 - PART (A) (HEADER ASS'Y)
PLASTIC : HOUSING ...LCP UL94V-0 BLACK
PIN : PHOSPHOR BRONZE
PCB : FR4
 - PART (B) (EJECT MECHANISM ASS'Y)
PLASTIC : GUIDE: POLYPHTHARAMID UL94V-0 BLACK
PUSH ROD CAP: POLYPHTHARAMID UL94V-0 BLACK
PLATE AND PUSH ROD : STAINLESS STEEL
EMI CONTACT: PHOSPHOR BRONZE
- FINISH (PIN)
UNDER PLATING : 0.5µm Ni
CONTACT AREA : 0.1µm GOLD OVER 0.8µm Pd-Ni
SOLDER TAIL : 2.5µm Sn-Pb
 : 2.5µm PURE Sn (-*****LF)

5 DIM "X"

4.25±0.1	3.5±0.1	5.0±0.1
OTHERS	36,67	1,17,34,35,51,68

- RECOMMENDED SCREW TORQUE 1.0 TO 1.5 MAX in-lbs (1.2-1.7 cm-kgs).
- SEE TA-1052 FOR RECOMMENDED PCB LAYOUT, FOR MATING CONNECTOR PART NUMBER 91931-31169.
- KEEP-OUT ZONE- NO PCB TRACES SHOULD BE WITHIN 0.25mm OF ASSEMBLY STAND-OFFS.
- IF LEAD FREE P/N.THE HOUSING WILL WITHSTAND EXPOSURE TO 260°C PEAK TEMPERATURE FOR 10 SECONDS IN A WAVE SOLDER APPLICATION WITH A 1.00MM MINIMUM THICK CIRCUIT BOARD.
- IF LEAD FREE P/N.THE PRODUCT MEETS EUROPEAN UNION DIRECTIVES AND OTHER COUNTRY REGULATIONS AS DESCRIBED IN GS-22-008
- LEAD FREE P/N PACKAGING MEETS GS-14-920 SPECIFICATION

ABOVE P.C.B.
RIGHT PUSH-ROD

mat'l. code		tolerances unless otherwise specified		CUSTOMER COPY		Electronics FCI www.fciconnect.com	
ltr	ecn no	dr	date	linear	.X±.3	projection	title
D					.XX±.13		5V EJECTOR HEADER ASS'Y.
				angles	.XXX±.051		68 POS. SMT. TYPE I II III
				dr	0° ±2'	product family	PCMCIA
				enrg	R.G. Draggoo 2/7/00	size	dwg no
				chr	D.BRANN 2/7/00	scale	1:1
				appd	D.BRANN 2/7/00	A4	98204
sheet index	revision sheet						sheet 3 of 3

ACAD

PDM: Rev:D

STATUS Released 2.6 Printed: Oct 12, 2010