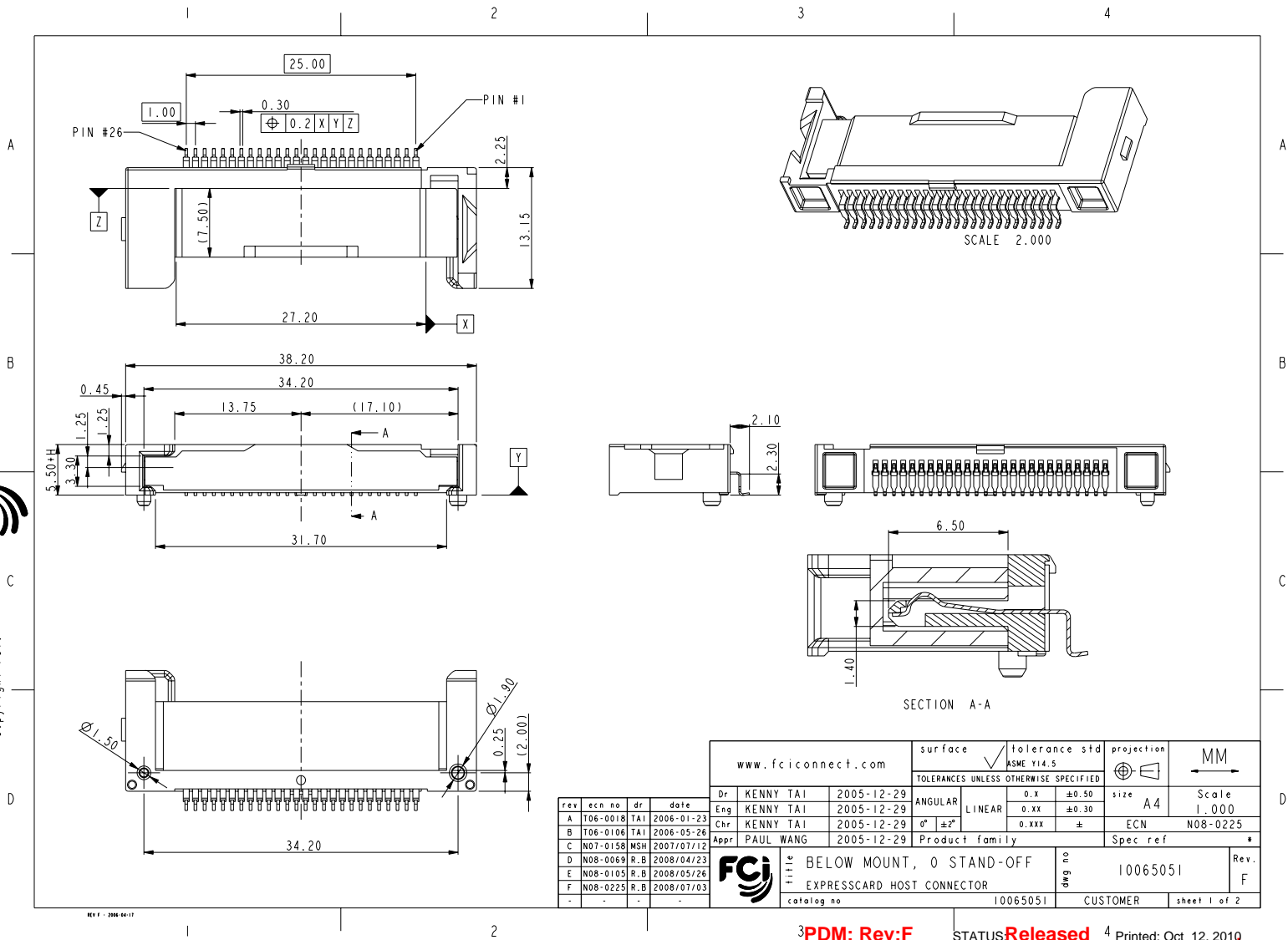




Copyright FCI.



REV F - 2008-04-17

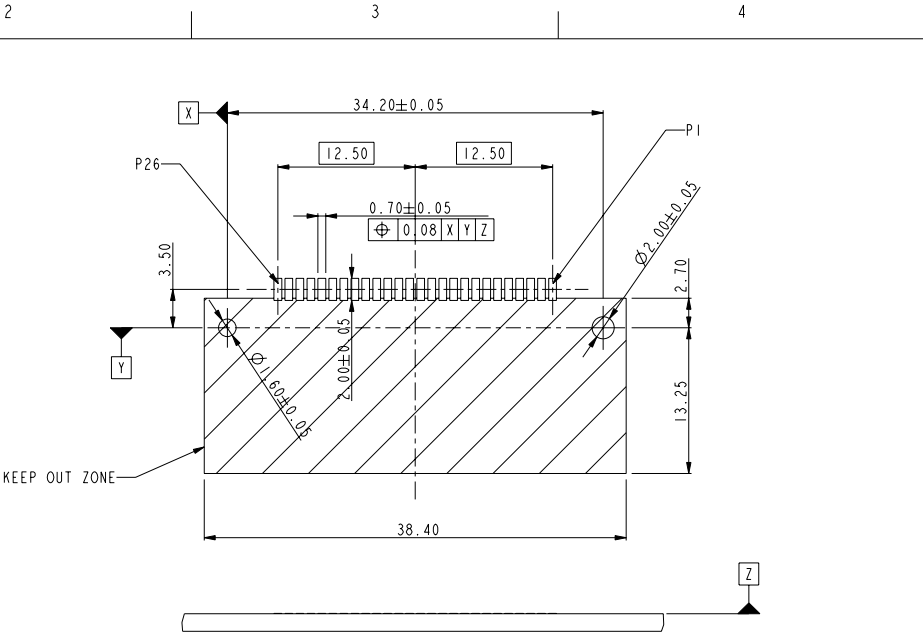
rev	ecm no	dr	date
A	T06-0018	TAI	2006-01-23
B	T06-0106	TAI	2006-05-26
C	N07-0158	MSH	2007/07/12
D	N08-0069	R.B	2008/04/23
E	N08-0105	R.B	2008/05/26
F	N08-0225	R.B	2008/07/03

www.fciconnect.com		surface	tolerance std	projection	MM
Dr KENNY TAI 2005-12-29		ANGULAR	ASME Y14.5	MM	
Eng KENNY TAI 2005-12-29		LINEAR	0.x ±0.50	size	A4 Scale 1.000
Chr KENNY TAI 2005-12-29		0° ±2°	0.xx ±0.30	ECN	N08-0225
Appr PAUL WANG 2005-12-29		Product family	0.xxx ±	Spec ref	
FCI		Title		cat no	Rev.
		BELOW MOUNT, 0 STAND-OFF EXPRESSCARD HOST CONNECTOR		10065051	F
				CUSTOMER	sheet 1 of 2

3PDM: Rev:F STATUS Released 4 Printed: Oct 12, 2010



Copyright FCI.



RECOMMENDED PCB LAYOUT
(VIEW FROM MOUNTING SIDE)

SCALE 2.000

NOTES :

- MATERIAL:
HOUSING: HIGH TEMPERATURE THERMOPLASTIC,
UL 94 V-0 FLAME RETARDANT.
TERMINAL: COPPER ALLOY.
PLATING SPEC. AS BELOW :
Ni 50u" UNDER PLATED.
Au OR GXT OVER CONTACT AREA. (ONE SIDE)
Tin 120u" OVER SOLDERING AREA.
- PACKING SPEC. GS-14-924.
- PRODUCT PERFORMANCE PER SPEC. GS-12-285.
- PART NUMBER SCHEME: (EX. 10065051-100BBSLF)
10065051-X XX X X X (X) LF (LEAD FREE)

SPEC.	OPTION (CODE)		
	CAP	WITH CAP (C)	
PACKING	TRAY (S)	TAPE & REEL (T)	TUBE (P)
HSG COLOR	BLACK (B)		
MOUNT SIDE	BELOW (B)		
STAND-OFF (H)	0 (00)	2.2MM (22)	
PLATING	GOLD 30u" (1)	GXT 30u" (2)	
		GXT 15u" (4)	

5. RoHS COMPATIBLE PRODUCT SPECIFICATIONS

- a-PLATING:
- "LF" MEANS THE PRODUCT IS LEAD-FREE, 2micro-meter MINIMUM MATTE TIN OVER 1.27micro-meter MINIMUM NICKEL UNDERPLATE.
- b-MANUFACTURING PROCESS COMPATIBILITY:
- THE HOUSING WILL WITHSTAND EXPOSURE TO 260°C±5°C SOLDER BATH TEMPERATURE FOR 5 SECONDS IN A REFLOW SOLDER APPLICATION WITH A 1.6mm MIN THICK CIRCUIT BOARD.

www.fciconnect.com		surface <input checked="" type="checkbox"/>	tolerance std ASME Y14.5	projection	MM
		TOLERANCES UNLESS OTHERWISE SPECIFIED			←
Dr	KENNY TAI	2005-12-29	ANGULAR	0.X ±0.50	size A4 Scale 1.000
Eng	KENNY TAI	2005-12-29	LINEAR	0.XX ±0.30	
Chr	KENNY TAI	2005-12-29	0° ±2°	0.XXX ±	ECN N08-0225
Appr	PAUL WANG	2005-12-29	Product family		Spec ref
	BELOW MOUNT, 0 STAND-OFF		cat no	10065051	
	EXPRESSCARD HOST CONNECTOR			CUSTOMER	sheet 2 of 2

3PDM: Rev:F

STATUS Released

4 Printed: Oct 12, 2010

REV 1 2006-04-17