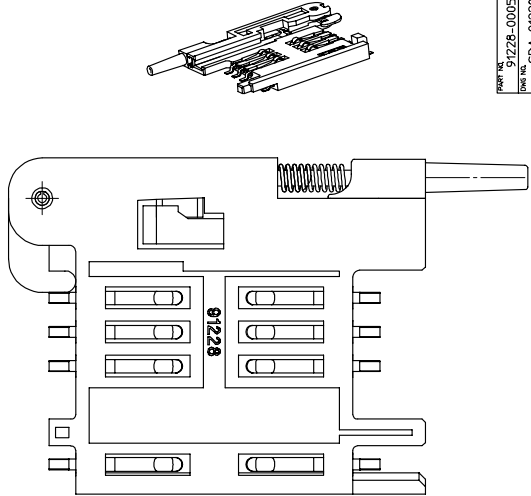
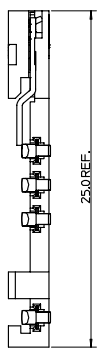
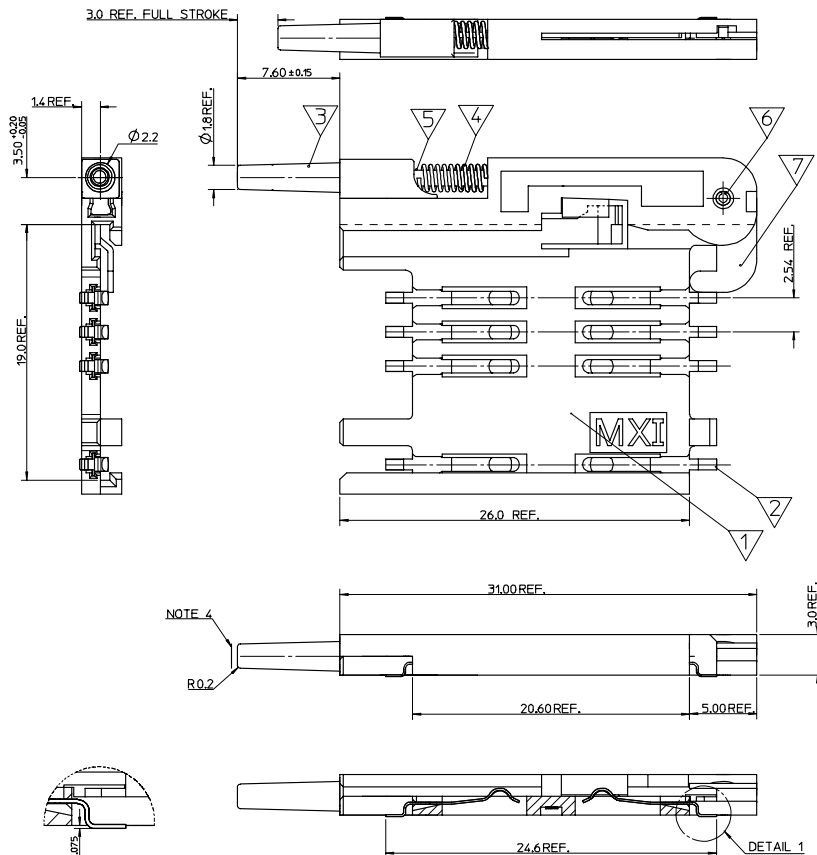
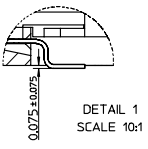


REV: 91228-0005
 DATE: SDA-91228



ITEM	COMPONENT	QTY	MATERIAL
▽	HOUSING	1	LIQUID CRYSTAL POLYMER (LCP) 30% GLASS FILL, UL94 V-0, COLOUR: BLACK
▽	TERMINAL	8	0.15 PHOSPHOR BRONZE 0.1 μm MIN Au OVER Pd/Ni IN SMT CONTACT AREA 2.5 μm MIN Sn ON SMT TAILS.
▽	PUSH BUTTON	1	NYLON 46, GLASS FILLED COLOUR: NATURAL
▽	COIL SPRING	1	0.25 REF THICK STAINLESS STEEL
▽	PUSH ROD	1	0.4 REF THICK STAINLESS STEEL
▽	C-PIN	1	STEEL
▽	LEVER	1	0.4 REF THICK STAINLESS STEEL

- NOTES:
 1. PACKAGING: PARTS TO BE PACKAGED IN TAPE & REEL; FOR DETAIL SEE SDA-91228-9001, SHT.2
 2. SEE PRODUCT SPECIFICATION PS-91228-004
 3. FOR ALL UNSPECIFIED DIMENSIONS AND NOTES SEE SHEET 1
 4. ALLOWABLE FLASH IN THIS AREA OF 0.3 MAX.
 5. ALL TAILS TO LIE WITHIN 0.10mm OF EACH OTHER.

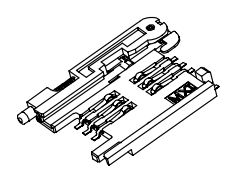
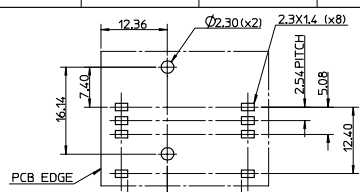
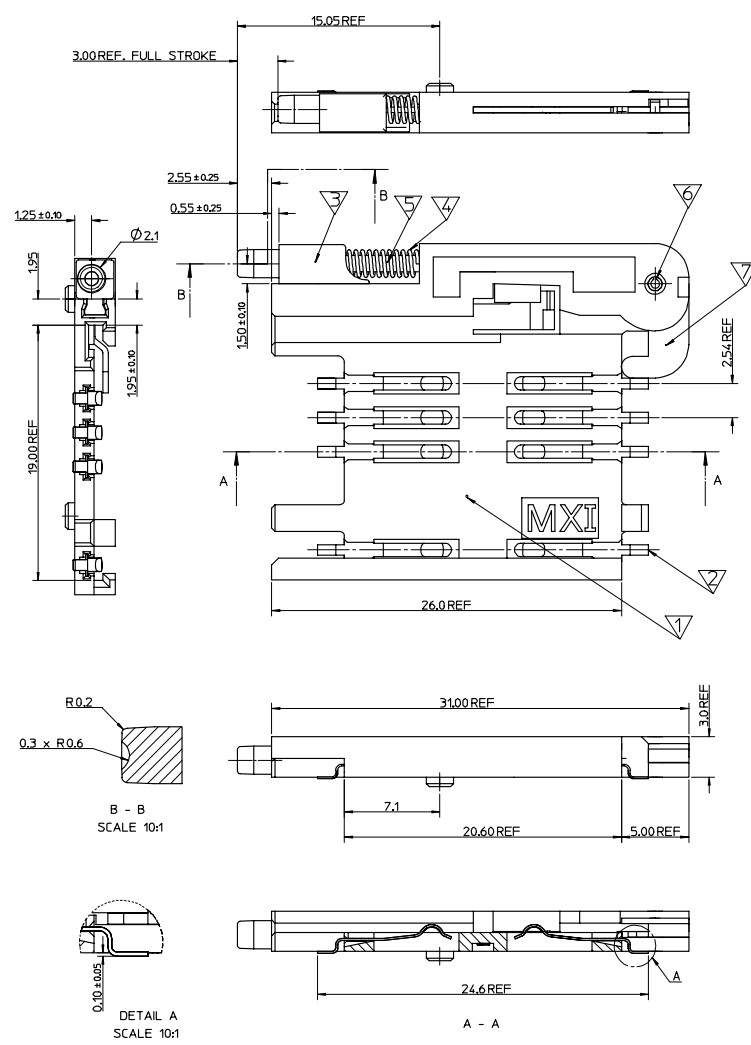


SEE SHEET 1 EC NO. E2005-0999 (DRAWING) CARTON 2005/07/26 CHK: CHK: APPR:	QUALITY SYMBOLS MAJOR CRITICAL SPC REV:	GENERAL TOLERANCES: (UNLESS SPECIFIED)		SCALE: 5:1	DESIGN UNITS: <input checked="" type="checkbox"/> mm <input type="checkbox"/> INCH	DIMENSIONS: <input type="checkbox"/> mm <input type="checkbox"/> INCH <input type="checkbox"/> mm ONLY	SHT: REV:
		4 PLACES ±0.10 ±0.10 3 PLACES ±0.10 ±0.10 2 PLACES ±0.05 ±0.10 1 PLACE ±0.10 ±0.10	DRAWN BY & DATE FDUGGAN 01/04/10	CHECKED BY & DATE ADOYLE 01/05/11	APPROVED BY & DATE BMAQUIRE 01/05/11	CAD FILENAME	MATERIAL NO. 91228-0005
DRAFT WHERE APPLICABLE MUST REMAIN WITHIN DIMENSIONS		THIS DRAWING CONTAINS INFORMATION THAT IS PROPRIETARY TO MOLEX INCORPORATED AND SHOULD NOT BE USED WITHOUT WRITTEN PERMISSION.					

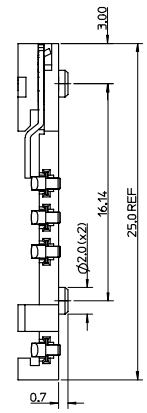
TITLE: SIM PCB CONNECTOR

MOLEX INCORPORATED
 91228-0005

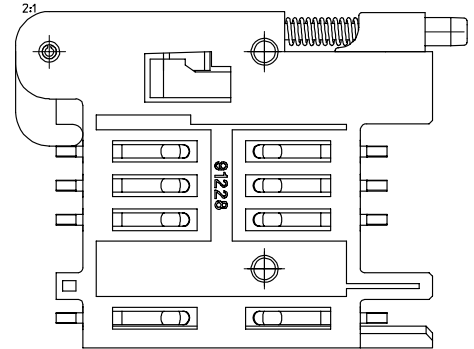
REV. 01 91228-0006
 REV. 00 SDA-91228



SCALE 2:1



RECOMMENDED PCB LAYOUT 2:1



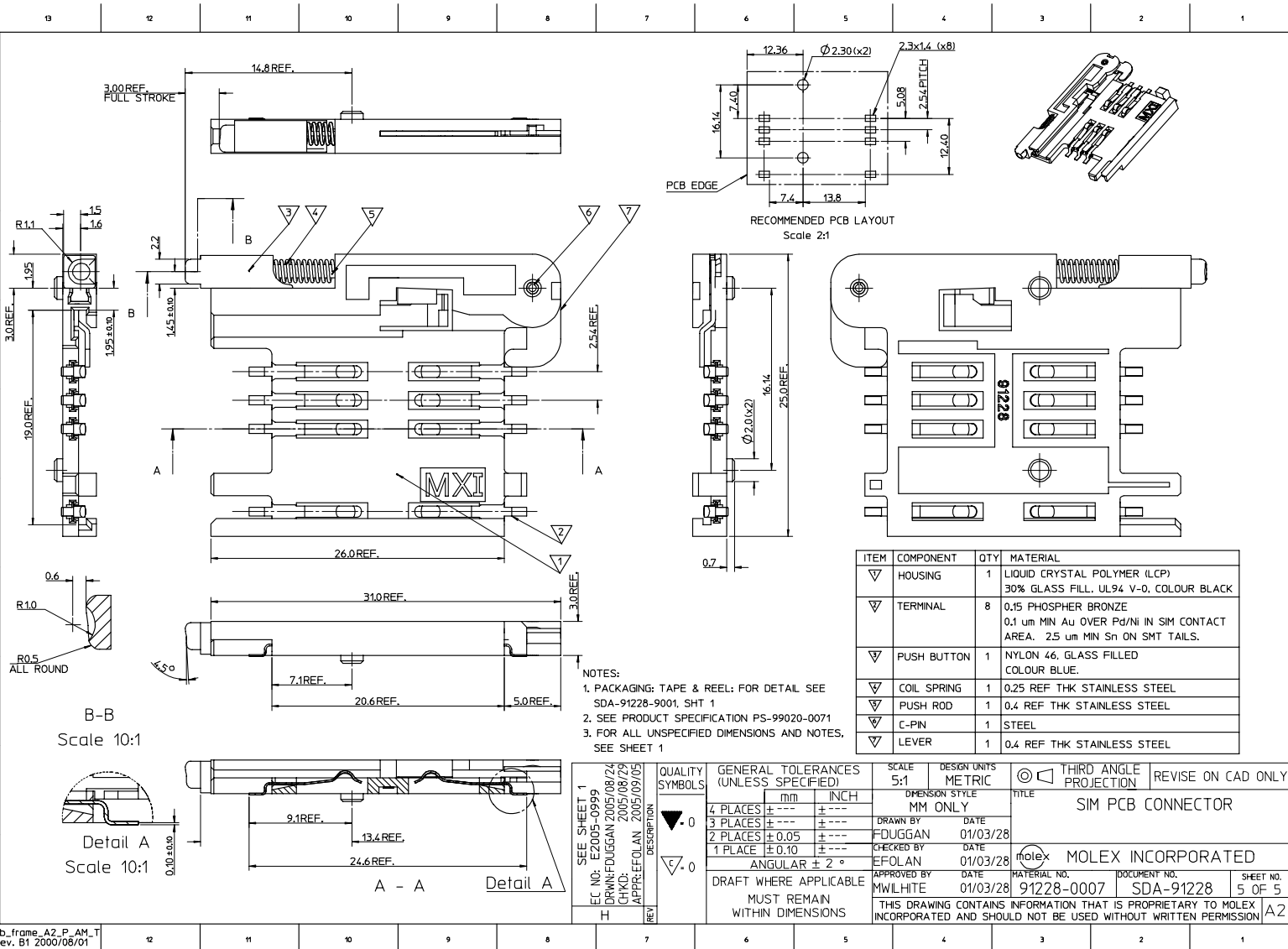
ITEM	COMPONENT	QTY	MATERIAL
▽	HOUSING	1	LIQUID CRYSTAL POLYMER (LCP) 30% GLASS FILL, UL94 V-0 COLOUR BLACK
▽	TERMINAL	8	0.15 PHOSPHOR BRONZE 0.1 um MIN Au OVER Pd/Ni IN SMT CONTACT AREA, 2.5 um MIN Sn ON SMT TAILS.
▽	PUSH BUTTON	1	NYLON 46, GLASS FILLED COLOUR BLACK
▽	COIL SPRING	1	0.25 REF THICK STAINLESS STEEL
▽	PUSH ROD	1	0.4 REF THICK STAINLESS STEEL
▽	C-PIN	1	STEEL
▽	LEVER	1	0.4 REF THICK STAINLESS STEEL

- NOTES:
 1. PACKAGING PARTS TO BE PACKAGED IN TAPE & REEL; FOR DETAIL SEE SDA-91228-9001, SHT 2
 2. SEE PRODUCT SPECIFICATION PS-99020-0071
 3. FOR ALL UNSPECIFIED DIMENSIONS AND NOTES, SEE SHEET 1

SEE SHEET 1 EC NO. E2005-0999 DRWING: DCARTON 2004/11/25 CHK: CHY APPR:	QUALITY SYMBOLS MAJOR CRITICAL	GENERAL TOLERANCES: (UNLESS SPECIFIED) 4 PLACES ± 0.10 3 PLACES ± 0.05 2 PLACES ± 0.05 1 PLACE ± 0.10 ANGULAR: ± 2°	SCALE 5:1 DESIGN UNITS <input checked="" type="checkbox"/> mm <input type="checkbox"/> INCH THRD ANGLE PROJECTION <input type="checkbox"/> mm <input type="checkbox"/> INCH <input type="checkbox"/> PITCH <input checked="" type="checkbox"/> ONLY	DRAWN BY & DATE FDUGGAN 01/04/10 CHECKED BY & DATE BROADBENT 0005/09/05 APPROVED BY & DATE BRADSHIRE 2005/08/29	DIMENSIONS: SHT REV REVISION ON CAD ONLY
	DRAFT WHERE APPLICABLE MUST REMAIN WITHIN DIMENSIONS	CAD FILENAME MATERIAL NO. 91228-0006 DRAWING NO. SDA-91228 SHEET NO. 4 of 4 SIZE C			

TITLE: SIM PCB CONNECTOR

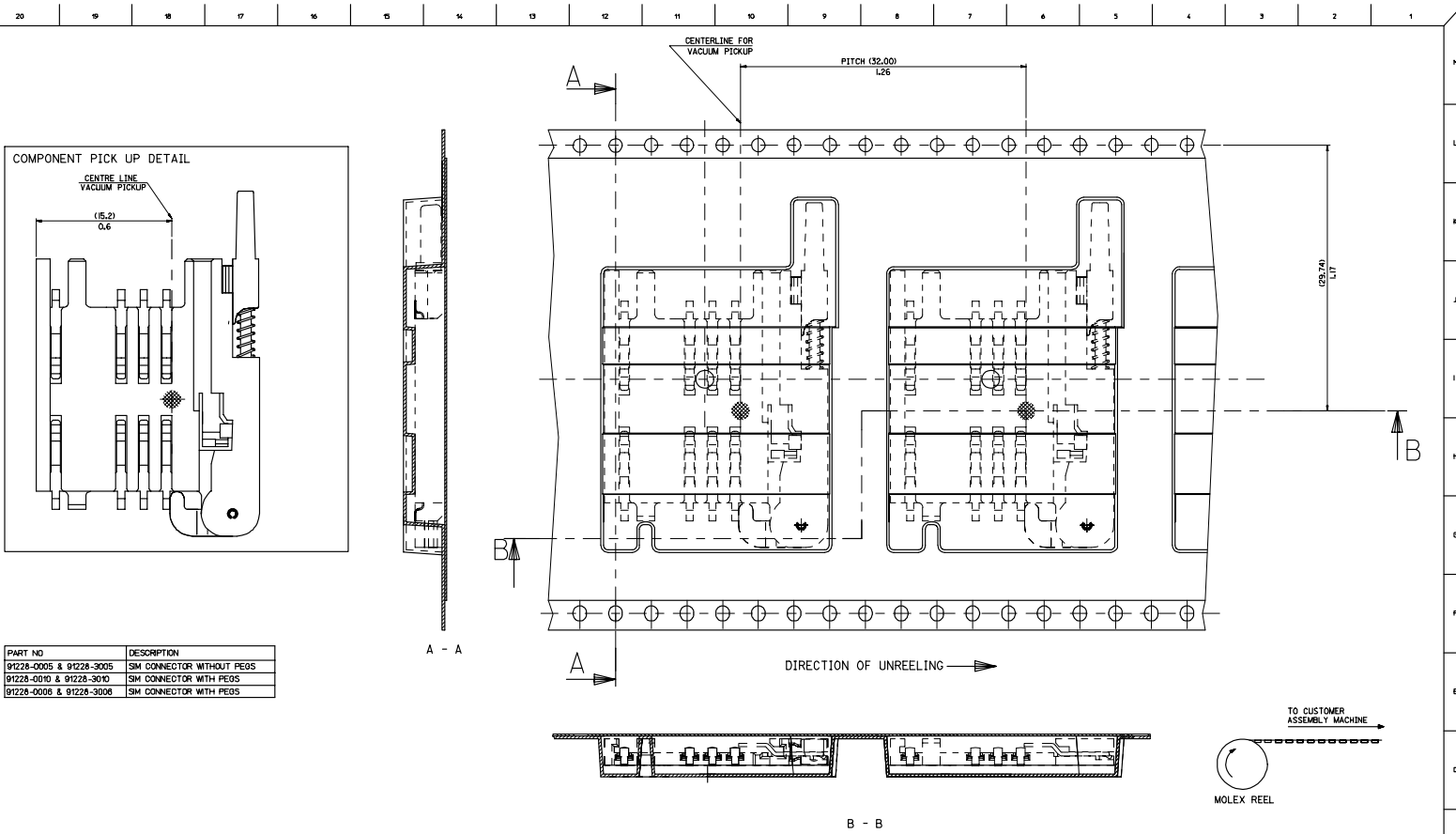
MOLEX INCORPORATED



ITEM	COMPONENT	QTY	MATERIAL
▽	HOUSING	1	LIQUID CRYSTAL POLYMER (LCP) 30% GLASS FILL, UL94 V-0, COLOUR BLACK
▽	TERMINAL	8	0.15 PHOSPHOR BRONZE 0.1 um MIN Au OVER Pd/Ni IN SIM CONTACT AREA, 2.5 um MIN Sn ON SMT TAILS.
▽	PUSH BUTTON	1	NYLON 46, GLASS FILLED COLOUR BLUE.
▽	COIL SPRING	1	0.25 REF THK STAINLESS STEEL
▽	PUSH ROD	1	0.4 REF THK STAINLESS STEEL
▽	C-PIN	1	STEEL
▽	LEVER	1	0.4 REF THK STAINLESS STEEL

- NOTES:
1. PACKAGING: TAPE & REEL: FOR DETAIL SEE SDA-91228-9001, SHT 1
 2. SEE PRODUCT SPECIFICATION PS-99020-0071
 3. FOR ALL UNSPECIFIED DIMENSIONS AND NOTES, SEE SHEET 1

SEE SHEET 1 EC NO: E2005-0999 DRW: FUGGAN 2005/08/24 CHKD: 2005/08/29 APPR: EFOLAN 2005/09/05	QUALITY SYMBOLS ▽ 0 ▽ 0	GENERAL TOLERANCES (UNLESS SPECIFIED) mm INCH 4 PLACES ± 0.10 ± 0.004 3 PLACES ± 0.15 ± 0.006 2 PLACES ± 0.20 ± 0.008 1 PLACE ± 0.30 ± 0.012 ANGULAR ± 2°	SCALE 5:1 DESIGN UNITS METRIC DIMENSION STYLE MM ONLY	THIRD ANGLE PROJECTION REVISE ON CAD ONLY
		DRAFT WHERE APPLICABLE MUST REMAIN WITHIN DIMENSIONS	DRAWN BY FUGGAN DATE 01/03/28 CHECKED BY EFOLAN DATE 01/03/28 APPROVED BY MWILHITE DATE 01/03/28	TITLE SIM PCB CONNECTOR MOLEX INCORPORATED MATERIAL NO. 91228-0007 DOCUMENT NO. SDA-91228 SHEET NO. 5 OF 5



PART NO	DESCRIPTION
91228-0005 & 91228-3005	SIM CONNECTOR WITHOUT PEGS
91228-0010 & 91228-3010	SIM CONNECTOR WITH PEGS
91228-0008 & 91228-3008	SIM CONNECTOR WITH PEGS

NOTES:
 ① FOR ALL UNSPECIFIED NOTES, DETAILS AND DIMENSIONS SEE SHEET 1

QUALITY SYMBOLS	GENERAL TOLERANCES (UNLESS SPECIFIED)		DIMENSION STYLE	SCALE	DESIGN UNITS	THIRD ANGLE PROJECTION
	mm	INCH	MM/IN	---	METRIC	
▽=0	2 PLACES ± 0.1	2 ---	DRAWN BY	DATE	TITLE	MOLEX INCORPORATED DOCUMENT NO. SDA-91228-9001 SHEET NO. 2 OF 4
▽=0	3 PLACES ± 0.2	3 ---	MAHER	2006/12/07	BLISTER PACKAGING	
	2 PLACES ± 0.1	2 ---	CHECKED BY	DATE	SIM CARD PCB HOUSING	
	1 PLACE ± 0.2	1 ---	DUGGAN	2006/12/07		
	ANGULAR ± 0.2		APPROVED BY	DATE		
	DRAFT WHERE APPLICABLE MUST REMAIN WITHIN DIMENSIONS		EFOLAN	2006/12/07		
	SEE CHART		THIS DRAWING CONTAINS INFORMATION THAT IS PROPRIETARY TO MOLEX INCORPORATED AND SHOULD NOT BE USED WITHOUT WRITTEN PERMISSION			