

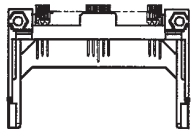
コンパクトフラッシュメモリーカードコネクタ Compact Flash Memory Card Connectors

Product Selection Guide

CONNECTOR

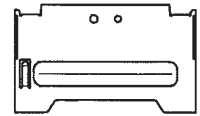
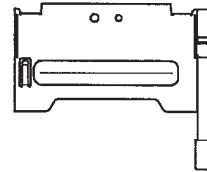
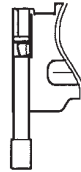


スタンドオフ H=2.0mm
STAND OFF H=2.0mm

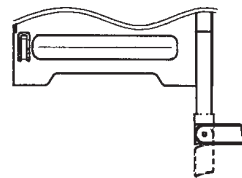
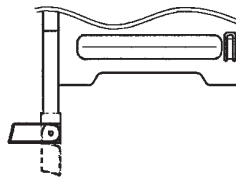


スタンドオフ H=0mm
STAND OFF H=0mm

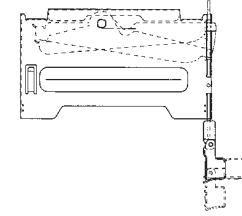
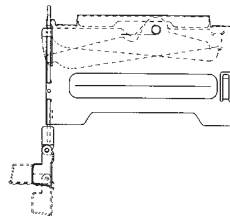
EJECTOR



LEFT STRAIGHT BUTTON RIGHT STRAIGHT BUTTON WITHOUT BUTTON



LEFT FOLDABLE BUTTON RIGHT FOLDABLE BUTTON



LEFT FOLDABLE BUTTON (SLIM TYPE) RIGHT FOLDABLE BUTTON (SLIM TYPE)

CONNECTOR

| stand off | KEYING | connector |
|--------------------|---------|---------------------|
| TYPE I height=0 | normal | 31 5610 050 500 833 |
| | reverse | 31 5610 050 550 833 |
| TYPE I height=2.0 | normal | 31 5610 050 210 833 |
| | reverse | 31 5610 050 260 833 |
| TYPE II height=0 | normal | 31 5620 050 116 833 |
| TYPE II height=2.0 | reverse | 31 5620 050 716 833 |

EJECTOR

| | button side | ejector | TYPE I | | | | TYPE II | | | |
|---------------|-------------|---------------------|------------|---------|--------------|---------|------------|---------|--------------|---------|
| | | | height=0mm | | height=2.0mm | | height=0mm | | height=2.0mm | |
| | | | normal | reverse | normal | reverse | normal | reverse | normal | reverse |
| straight | Left | 30 5610 000 001 000 | ○ | ○ | ○ | ○ | | | | ○ |
| | Right | 30 5610 000 002 000 | ○ | ○ | ○ | ○ | | | | ○ |
| | Left | 30 5620 000 001 000 | | | | | ○ | | | |
| | Right | 30 5620 000 002 000 | | | | | ○ | | | |
| foldable | Left | 30 5610 000 005 000 | ○ | ○ | ○ | ○ | | | | ○ |
| | Right | 30 5610 000 006 000 | ○ | ○ | ○ | ○ | | | | ○ |
| | Left | 30 5620 000 005 000 | | | | | ○ | | | |
| | Right | 30 5620 000 006 000 | | | | | ○ | | | |
| foldable SLIM | Left | 30 5610 000 904 000 | ○ | ○ | ○ | ○ | | | | ○ |
| | Right | 30 5610 000 903 000 | ○ | ○ | ○ | ○ | | | | ○ |

コンパクトフラッシュメモリーカードコネクタ

Compact Flash Memory Card Connectors

Product Selection Guide

EJECTOR & CONNECTOR

| connector style | ejector style | | ordering code | |
|----------------------------|---------------|-------|---------------------|---------------------|
| stand off KEYING | button side | | connector | ejector |
| TYPE I height=0 normal | straight | Left | 31 5610 050 500 833 | 30 5610 000 001 000 |
| | | Right | 31 5610 050 500 833 | 30 5610 000 002 000 |
| | foldable | Left | 31 5610 050 500 833 | 30 5610 000 005 000 |
| | | Right | 31 5610 050 500 833 | 30 5610 000 006 000 |
| | foldable SLIM | Left | 31 5610 050 500 833 | 30 5610 000 904 000 |
| | | Right | 31 5610 050 500 833 | 30 5610 000 903 000 |
| TYPE I height=0 reverse | straight | Left | 31 5610 050 550 833 | 30 5610 000 001 000 |
| | | Right | 31 5610 050 550 833 | 30 5610 000 002 000 |
| | foldable | Left | 31 5610 050 550 833 | 30 5610 000 005 000 |
| | | Right | 31 5610 050 550 833 | 30 5610 000 006 000 |
| | foldable SLIM | Left | 31 5610 050 550 833 | 30 5610 000 904 000 |
| | | Right | 31 5610 050 550 833 | 30 5610 000 903 000 |
| TYPE I height=2.0 normal | straight | Left | 31 5610 050 210 833 | 30 5610 000 001 000 |
| | | Right | 31 5610 050 210 833 | 30 5610 000 002 000 |
| | foldable | Left | 31 5610 050 210 833 | 30 5610 000 005 000 |
| | | Right | 31 5610 050 210 833 | 30 5610 000 006 000 |
| | foldable SLIM | Left | 31 5610 050 210 833 | 30 5610 000 904 000 |
| | | Right | 31 5610 050 210 833 | 30 5610 000 903 000 |
| TYPE I height=2.0 reverse | straight | Left | 31 5610 050 260 833 | 30 5610 000 001 000 |
| | | Right | 31 5610 050 260 833 | 30 5610 000 002 000 |
| | foldable | Left | 31 5610 050 260 833 | 30 5610 000 005 000 |
| | | Right | 31 5610 050 260 833 | 30 5610 000 006 000 |
| | foldable SLIM | Left | 31 5610 050 260 833 | 30 5610 000 904 000 |
| | | Right | 31 5610 050 260 833 | 30 5610 000 903 000 |
| TYPE II height=0 normal | straight | Left | 31 5620 050 116 833 | 30 5620 000 001 000 |
| | | Right | 31 5620 050 116 833 | 30 5620 000 002 000 |
| | foldable | Left | 31 5620 050 116 833 | 30 5620 000 005 000 |
| | | Right | 31 5620 050 116 833 | 30 5620 000 006 000 |
| TYPE II height=2.0 reverse | straight | Left | 31 5620 050 716 833 | 30 5610 000 001 000 |
| | | Right | 31 5620 050 716 833 | 30 5610 000 002 000 |
| | foldable | Left | 31 5620 050 716 833 | 30 5610 000 005 000 |
| | | Right | 31 5620 050 716 833 | 30 5610 000 006 000 |
| | foldable SLIM | Left | 31 5620 050 716 833 | 30 5610 000 904 000 |
| | | Right | 31 5620 050 716 833 | 30 5610 000 903 000 |

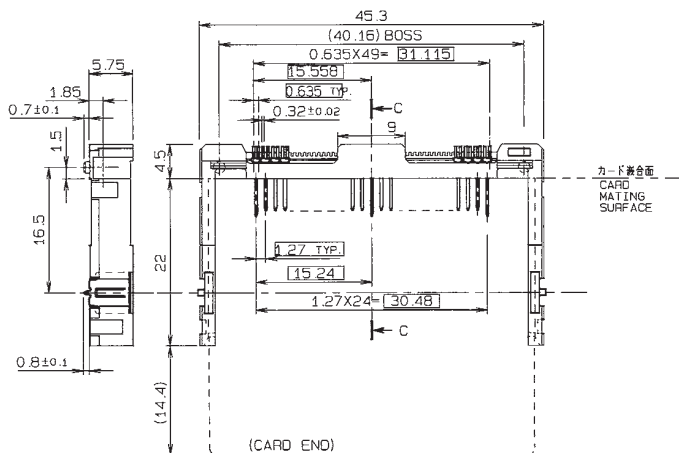
Compact Flash Memory Card Connectors

SERIES

5620

ヘッダー/イジェクタ スタンドオフH=0mm
Header/Ejector Assembly Stand off H=0mm

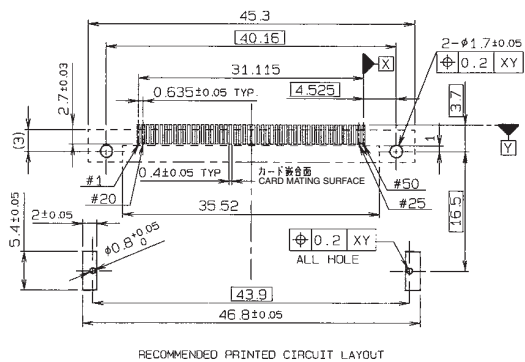
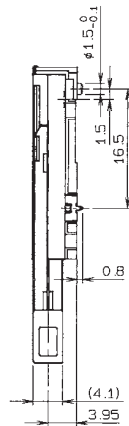
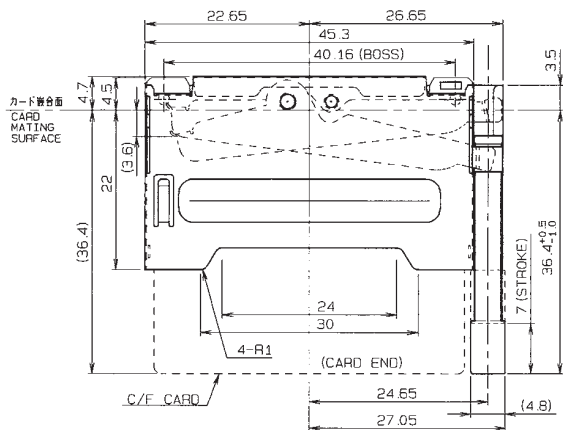
CONNECTOR



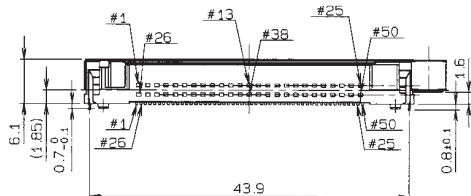
| Description | Pin number | L±0.10 |
|-------------|----------------|--------|
| Power | 1,13,38,50 | 5.00 |
| General | All other pins | 4.25 |
| Detect | 25,26 | 3.50 |

| KEYING | A | B | C | D | E | F | G | H |
|--------|-----|------|----|-----|-----|-----|-----|-----|
| NORMAL | 1.4 | 0.78 | #1 | #13 | #25 | #26 | #38 | #50 |

ASSEMBLY



RECOMMENDED PRINTED CIRCUIT LAYOUT



コネクタ/CONNECTOR

注文コード ORDERING CODE

31 5620 050 116 833

イジェクタ/EJECTOR

注文コード ORDERING CODE

30 5620 000 XXX 000

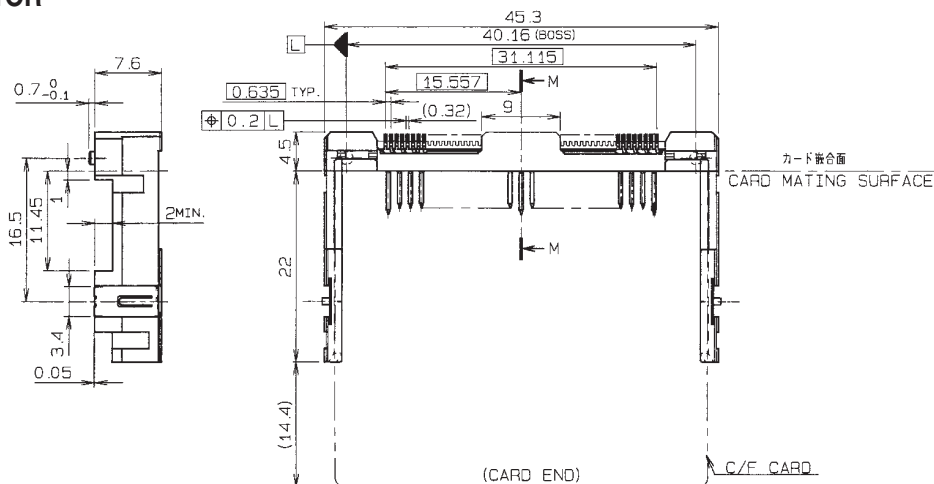
Compact Flash Memory Card Connectors

SERIES

5620

ヘッダー/イジェクタ スタンドオフH=2mm
Header/Ejector Assembly Stand off H=2mm

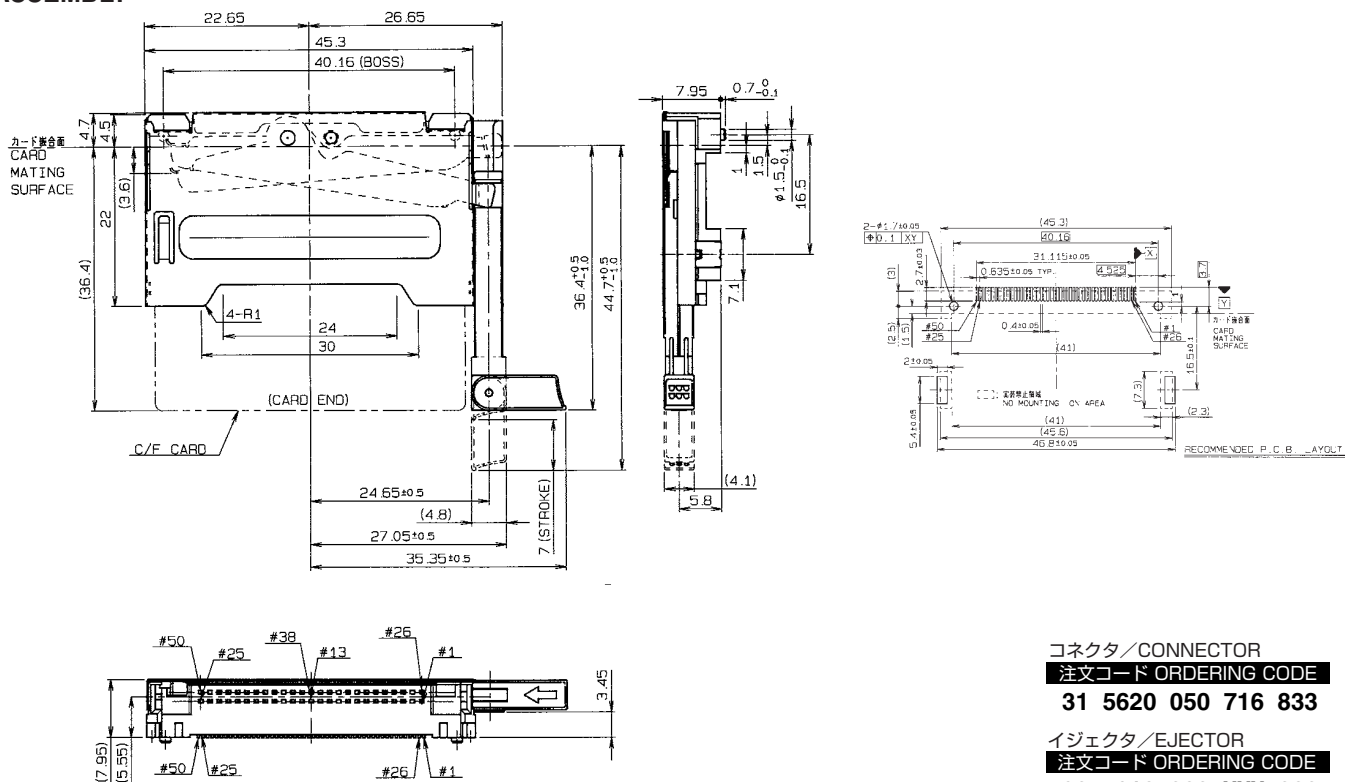
CONNECTOR



| Description | Pin number | L±0.10 |
|-------------|----------------|--------|
| Power | 1,13,38,50 | 5.00 |
| General | All other pins | 4.25 |
| Detect | 25,26 | 3.50 |

| KEYING | A | B | C | D | E | F | G | H |
|---------|------|-----|-----|-----|-----|-----|-----|----|
| REVERSE | 0.78 | 1.4 | #50 | #38 | #26 | #25 | #13 | #1 |

ASSEMBLY



コネクタ/CONNECTOR
注文コード ORDERING CODE
31 5620 050 716 833

イジェクタ/EJECTOR
注文コード ORDERING CODE
30 5610 000 XXX 000

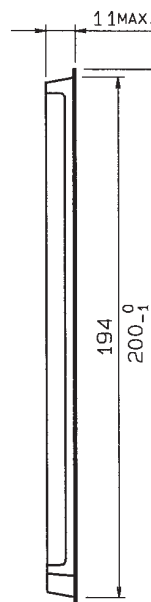
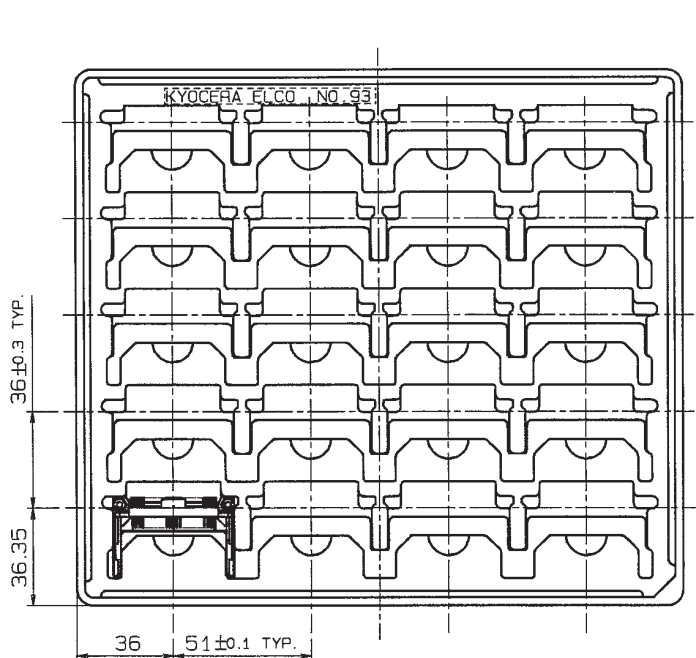
Compact Flash Memory Card Connectors

SERIES

5610/5620

ヘッダー/イジェクタ梱包仕様
Header/Ejector Assembly Package

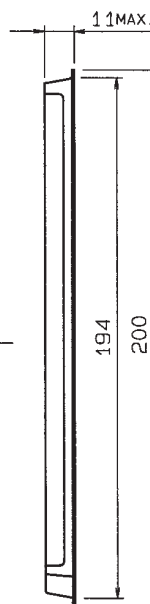
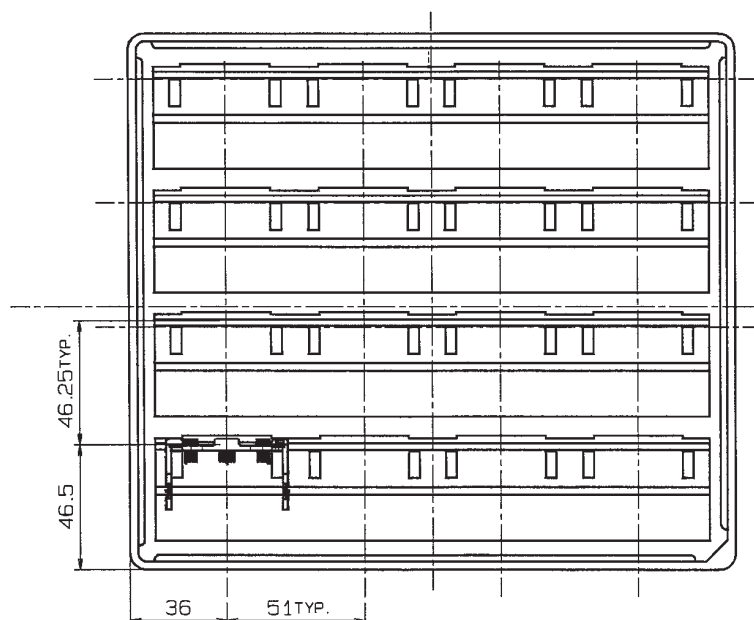
SERIES 5610



数量20ヶ/トレー
Quantity 20/TRAY

| TYPE | PART NO. |
|-------|---------------------|
| H=0mm | 31 5610 050 5×× 833 |
| H=2mm | 31 5610 050 2×× 833 |

SERIES 5620



数量16ヶ/トレー
Quantity 16/TRAY

| TYPE | PART NO. |
|-------|---------------------|
| H=0mm | 31 5620 050 116 833 |
| H=2mm | 31 5620 050 716 833 |