

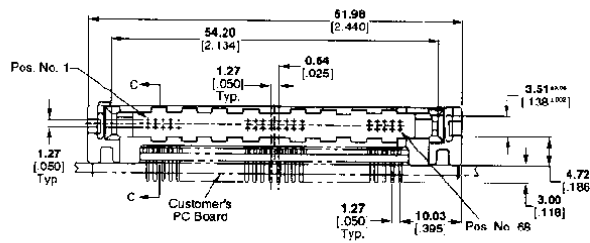
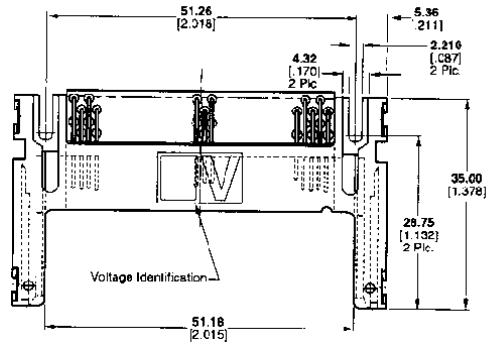
PC Card Headers (Continued)

Header, Non-CardBus, Single Slot, Thru Hole

Right Angle

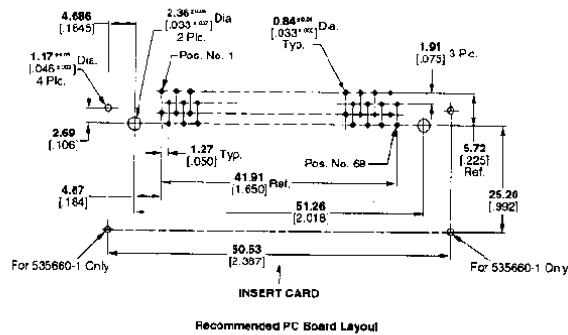
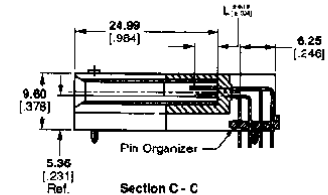
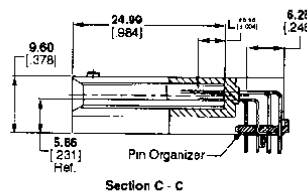
Shielded — No
 Housing Material Flammability Rating — UL 94V-0
 Color — Black
 Contact Material — Brass
 Board Mount — Top Side

Technical Documents
 Product Specification:
 108-1469



PC Card Receptacles, I/O Connectors and Frame Kits —
 See page 622 in I/O section

Pin Length (L)	Pin Locations
5.00 .97	1, 17, 34, 35, 51, 68
4.25 .67	All Others Not Listed
3.50 .138	36, 67



NOTE: Holddowns retain the pin header on a PC board during processing. Two size M2 [2-56 UNC] screws (Customer supplied) are required for strain relief.

No. of Pos.	With Holddowns	Housing Material	Contact Plating	Contact Underplating	Solder Tail Plating	No. of Holddowns	Height		
							Raised	Standard	Low Profile
68	No	Glass-Filled PBT	Gold (12)	Nickel (39)	Tin-Lead (40)	—	—	178431-1 ¹	—
68	No	Liquid Crystal Polymer (LCP)	Gold (30)	Nickel (50)	Tin-Lead (150)	—	535655-1 ²	535653-1 ²	—
68	Yes	Liquid Crystal Polymer (LCP)	Gold (30)	Nickel (50)	Tin-Lead (150)	2 (Rear)	535659-1 ²	—	—
68	Yes	Liquid Crystal Polymer (LCP)	Gold (30)	Nickel (50)	Tin-Lead (150)	4	535660-1 ²	—	—
68	No	Liquid Crystal Polymer (LCP)	Gold (30)	Nickel (50)	Tin-Lead (150)	—	—	—	788698-1

Note: (1) JEIDA Version IV (2) Two size M2 screws (customer supplied) are required for fastening the connector to the PC board.