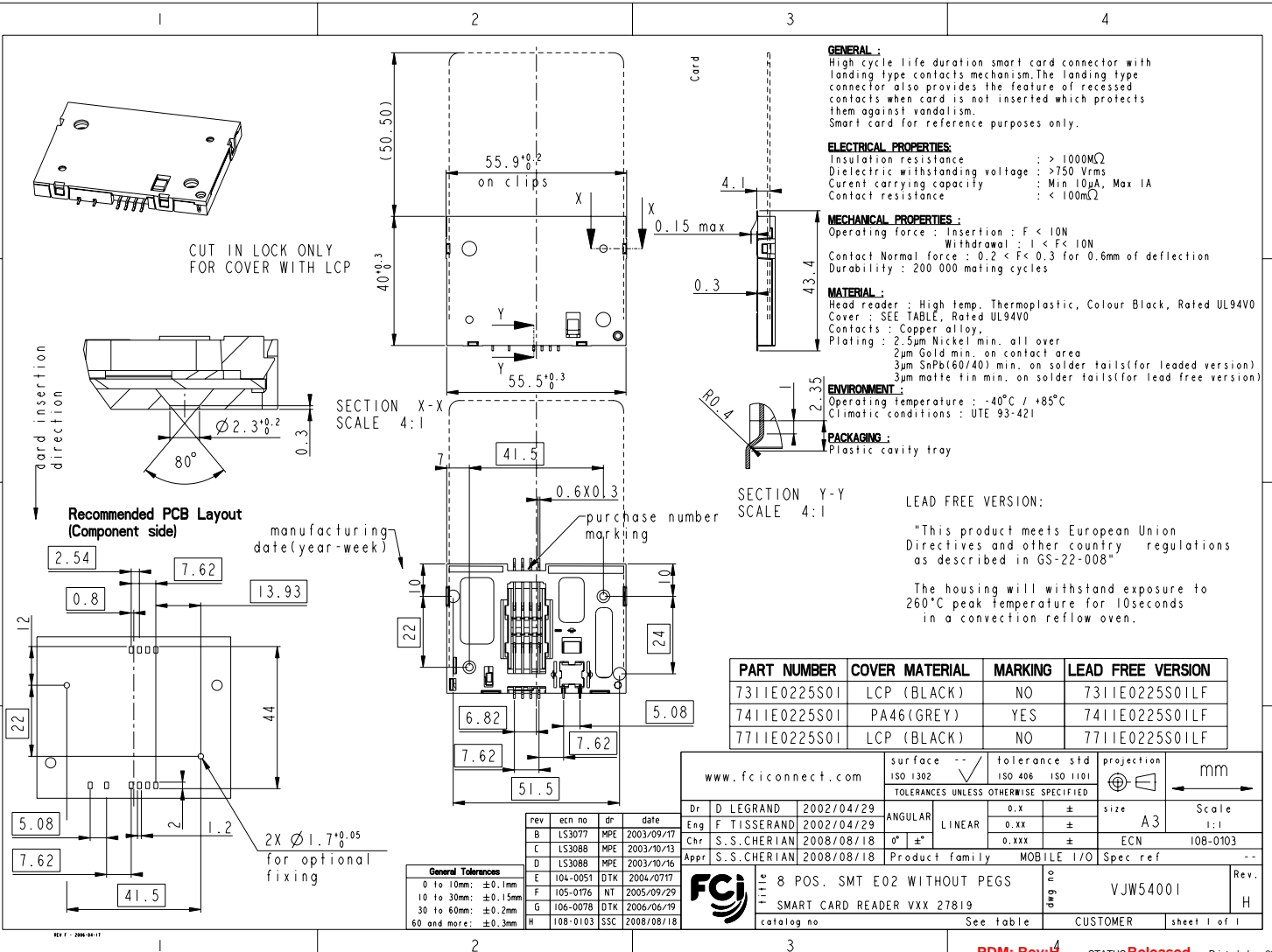


Copyright FCI



**GENERAL:**  
High cycle life duration smart card connector with landing type contacts mechanism. The landing type connector also provides the feature of recessed contacts when card is not inserted which protects them against vandalism.  
Smart card for reference purposes only.

**ELECTRICAL PROPERTIES:**  
Insulation resistance : > 1000MΩ  
Dielectric withstanding voltage : >750 Vrms  
Current carrying capacity : Min 10mA, Max 1A  
Contact resistance : < 100mΩ

**MECHANICAL PROPERTIES:**  
Operating force : Insertion : F < 10N  
Withdrawal : 1 < F < 10N  
Contact Normal force : 0.2 < F < 0.3 for 0.6mm of deflection  
Durability : 200 000 mating cycles

**MATERIAL:**  
Head reader : High temp. Thermoplastic, Colour Black, Rated UL94V0  
Cover : SEE TABLE, Rated UL94V0  
Contacts : Copper alloy,  
Plating : 2.5µm Nickel min. all over  
2µm Gold min. on contact area  
3µm SnPb(60/40) min. on solder tails(for leaded version)  
3µm molte tin min. on solder tails(for lead free version)

**ENVIRONMENT:**  
Operating temperature : -40°C / +85°C  
Climatic conditions : UTE 93-421

**PACKAGING:**  
Plastic cavity tray

**LEAD FREE VERSION:**  
"This product meets European Union Directives and other country regulations as described in GS-22-008"  
The housing will withstand exposure to 260°C peak temperature for 10seconds in a convection reflow oven.

PART NUMBER	COVER MATERIAL	MARKING	LEAD FREE VERSION
7311E0225S01	LCP (BLACK)	NO	7311E0225S01LF
7411E0225S01	PA46(GREY)	YES	7411E0225S01LF
7711E0225S01	LCP (BLACK)	NO	7711E0225S01LF

www.fciconnect.com		surface	tolerance std	projection	mm
Dr	D LEGRAND 2002/04/29	ISO 1302	ISO 406 ISO 1101	⊕	←
Eng	F TISSERAND 2002/04/29	TOLERANCES UNLESS OTHERWISE SPECIFIED			
Chr	S.S.CHERIAN 2008/08/18	ANGULAR	0.X ±	size	Scale
Appr	S.S.CHERIAN 2008/08/18	LINEAR	0.XX ±	A3	1:1
		0° ±*	0.XXX ±	ECN	108-0103
				Product family	MOBILE I/O Spec ref
TITLE		8 POS. SMT E02 WITHOUT PEGS	dwg no	VJW54001	Rev.
SMART CARD READER VXX 27819		catalog no	See table	CUSTOMER	sheet 1 of 1